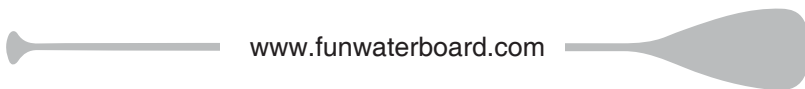




## INFLATABLE STAND UP PADDLE BOARD



If you have any questions, please feel free to contact us.

We are always here for you.

**E-mail: [info@funwaterboard.com](mailto:info@funwaterboard.com)**



FUN WATER OUTDOOR INC.

# HELLO,

Thank you for choosing FUNWATER Stand Up Paddleboard!

**FUNWATER's** simple goal of

*"Becoming the ultimate adventure brand for paddling lovers"*

## WELCOME TO THE FUNWATER FAMILY!

We are a small team of outdoor adventurers who strive to make paddle boarding as enjoyable and fulfilling as it is affordable and accessible for you.

## LIKE WHAT WE ARE DOING?

You can let us know by writing a review for your iSUP on [www.funwaterboard.com](http://www.funwaterboard.com)

and tagging us on social: [FACEBOOK:@FUNWATER](#) [INSTAGRAM:@FUNWATER](#) [YOUTUBE:@FUNWATER](#)

In doing so, you're also helping our small business grow, as we rely on happy customers and word of mouth.

## HAVING ANY ISSUES?

Please contact us immediately so we can help you:

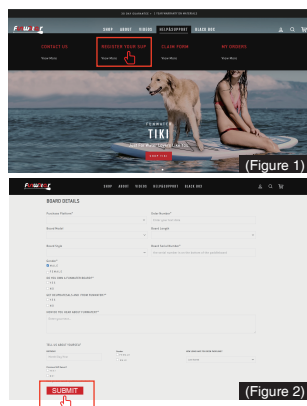
[info@funwaterboard.com](mailto:info@funwaterboard.com)

We work hard to ensure each and every FunWater is exploring the world on a paddle board they love!

## HAPPY PADDLING,

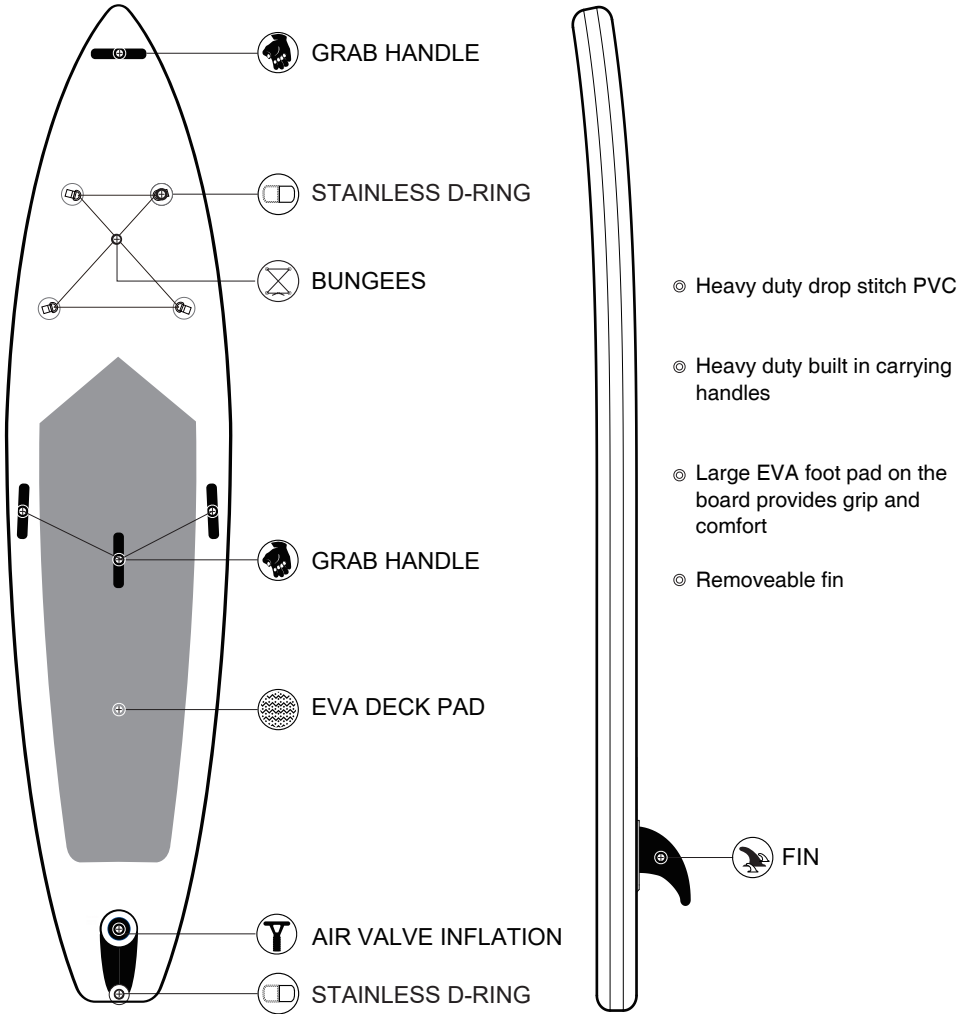
**The FUNWATER Team**

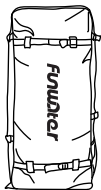
## REGISTER YOUR SUP



Here is how to complete registration:

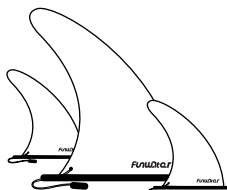
1. Enter the website: <http://www.funwaterboard.com>
  2. Find "HELP&SUOOPRT" in the top of this page and move it to this button and you will see "REGISTER YOUR SUP" and click on it (Figure 1).
  3. Fill in your registration information and pull down to the bottom of this page and find "SUBMIT" button, and click on it to complete registration (Figure 2).
  4. Or you may choose to contact customer service email: [info@funwaterboard.com](mailto:info@funwaterboard.com)
- I am here to help if you ever have any questions.





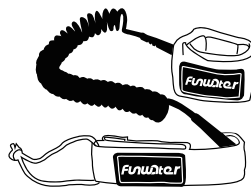
### HEAVY DUTY BACKPACK STORAGE BAG

High-capacity bag, All of goods can be loaded in the bag, it's easy to carry and transport.



### FIN

Use the removable 10" fins for increased tracking while paddling.



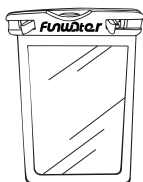
### LEASH

The usage of the leash is to ensure safety.



### PUMP W/ GAUGE

His manual pump inflates your inflatable by inserting the end of the hose into the inflate ports and pumping to the proper PSI.



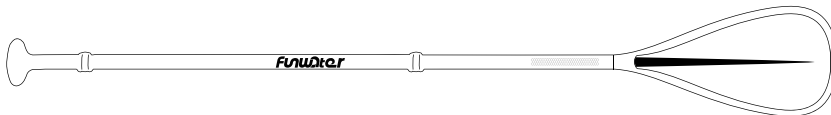
### WATER-PROOF

Procase Universal Waterproof Pouch Cellphone Dry Bag Waterproof Phone Case for Beach.



### REPAIR KIT

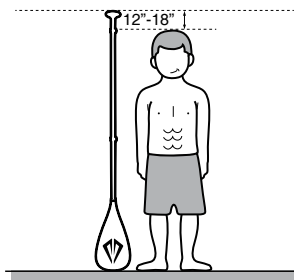
In case of any punctures or rips, our Repair Kit comes with patches, and a valve tool.



### EXP - 3 PIECE PADDLE

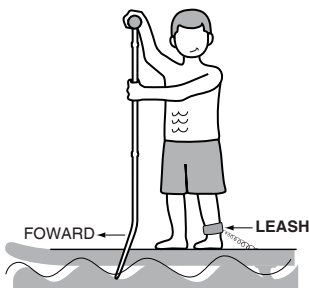
3X adjustable aluminum paddle, you can adjust the length according to your habit and height, big blade can increase contact area.





## 01 Paddle Height

First of all, paddles must have the right length - about 12"-18" above the head height, approximate hand width.



## 02 Standstill

Place your feet about one shoulder width away from each other on the board. One hand grabs the T-handle, the other grabs the shaft. Eyes towards the horizon go easy to the knees.

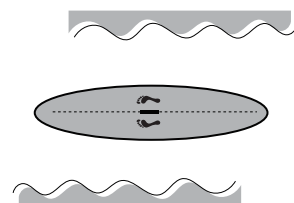
## 03 Always with Leash

Don't forget your Leash stay on the safe side.



## 04 Forward

Dive the paddle into the water for an arm length and pull it back along the board, where both the upper hand and the leaf should face each other vertically.



## 05 Surfer-Pose

Once the wave takes you, take the typical surfer posture and set a foot further to front. The gives you a better balance and agility.



Figure 1.

**SUP PADDLE:**

Your 3-Piece paddle easily connects together and is fully height adjustable. The ergonomic grip should be handled as illustrated (Figure 1).



If the connection at the lock of the propeller rod is loose, please rotate the lock several times and tighten it(Figure 2).

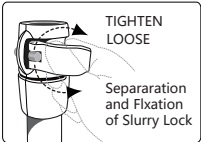
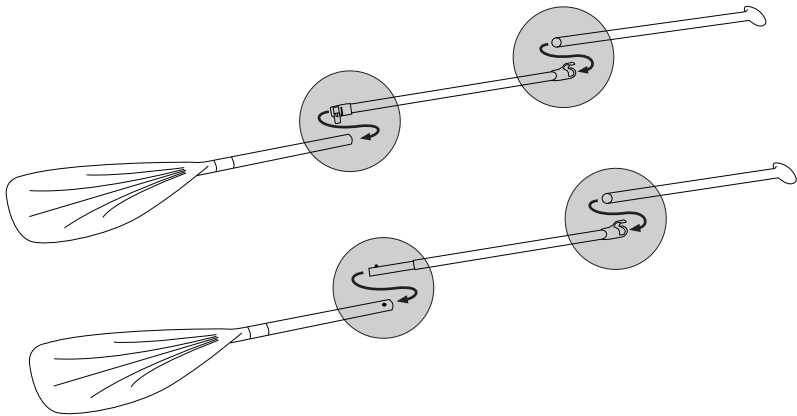
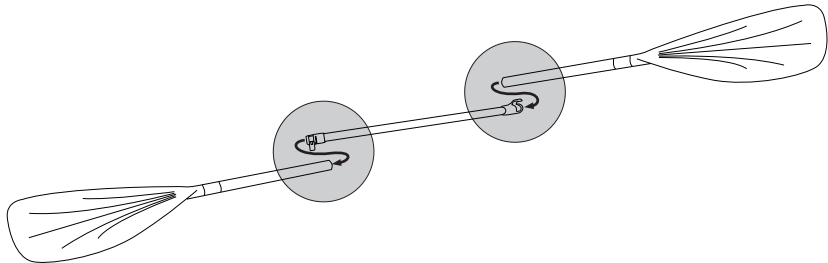
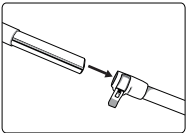


Figure 2.



**KAYAK PADDLE:**

If your package came with a Kayak Conversion Kit (only available on select models), then the 3-Piece paddle easily converts into a kayak paddle using the extra blade. Simply swap the adjustable T-bar for the extra blade, pop into place and fasten the clasp.



**FIN TYPE:**

We have three ways to install fins, which can be chosen according to the actual situation. Your SUP either has a Bravo Fin or Smart Lock Fin System. Please check your fin type and follow the necessary instructions.

**TIP:** Before you begin please ensure the fin box slot is clean and free of sand and grit.

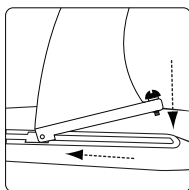
**Screw Fin**

Figure 1.

Slide the fin into the fin box. Make sure fin and card slot of fin box in the same position.

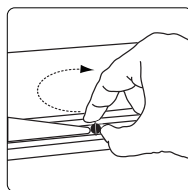


Figure 2.

Place the bolt in the chute and rotate tightly to ensure that the fin do not fall off.

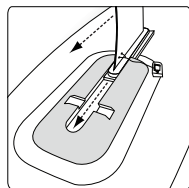
**Slide Fin**

Figure 1.

Slide the fin into the fin box. Make sure fin and card slot of fin box in the same position.

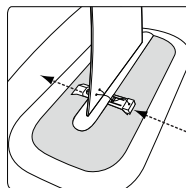


Figure 2.

Insert the gasket into the slot to ensure that the gasket can catch the fin.

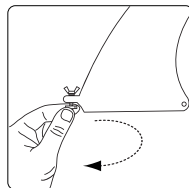
**US Fin**

Figure 1.

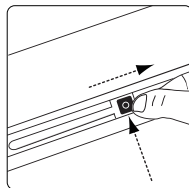


Figure 2.

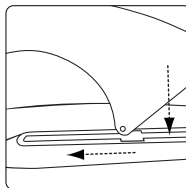


Figure 3.

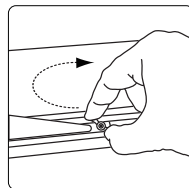
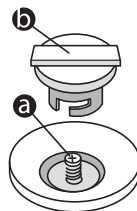


Figure 4.

Unscrew the plate from the screw (Figure 1) and place into the fin slot via the gap (Figure 2). **TIP:** Use the screw to slide the plate into place along the slot. Insert the fin into the fin box slot via the central gap, slide the fin to the back and firmly push down the other end (Figure 3). Line up the screw with the screw plate and tighten until fully secure (Figure 4).

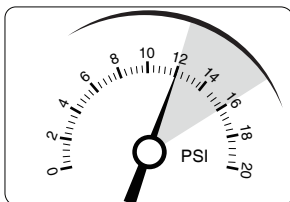
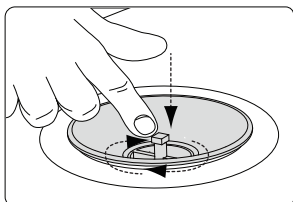
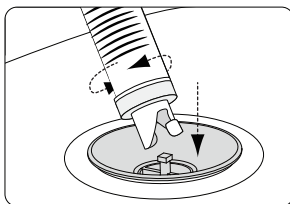
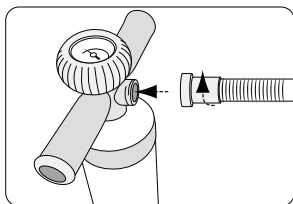
## OPERATION OF VALVES

In order to inflate easily, Remove the valve cover(b)- clockwise whirl it(b), Put it(a) in "Output" position. After inflating, screw in valve cover(b) and anticlockwise whirl it(b).



**WARNING:** Please only use the pump provided or other recommended pumps. DO NOT use an air compressor as you will risk over-inflating the board and severely damaging your SUP beyond repair. Your warranty will be void in the event of damage via over-inflation.

- ⦿ Unpack and unroll your SUP on a smooth, clean, flat surface.
- ⦿ Connect the air tap on your pump to the inflation valve on your SUP. Firmly push the air tap inwards and twist clockwise to secure the connection.
- ⦿ Before you begin to pump, please consult the recommended PSI on the valve(s) of your SUP and inflate to the appropriate value. DO NOT over-inflate your SUP.
- ⦿ The PSI may not register on your pump until you reach at least 7 PSI - keep pumping!
- ⦿ Once the desired air pressure has been reached, please safely disconnect the air tap of your pump and secure the valve on your SUP.



## INFLATION TIPS AND PRECAUTIONS

- ◎ The board can be inflated either with our hand pump or an electric pump. The electric pump can inflate the board to a moderate pressure and save a lot of time with about 90% of the required air volume. You will need to use your hand pump to inflate the chambers to the correct pressure.
- ◎ Do not use an air compressor. Damage to your board caused by over inflation from an air compressor is not covered by your warranty.
- ◎ After 2 or 3 days there may be a small decrease of pressure due to temperature change. If so, add a few pumps of air.
- ◎ Before undertaking a long paddle, inflate the board for a full 24 hours to be sure the board is airtight. If you are seeing a consistent decrease in air pressure, follow the instructions for leak detection in the board repair section of this manual.
- ◎ Do not over-inflate the board. A max pressure of 12 PSI is adequate. The easiest gauge of a good working pressure is to have the chambers inflated to a firm pressure when you press on them.
- ◎ Do not pump to a high pressure and let the board sit out in the sun. If the board is going to be in a warm environment, slightly under-inflate the board and allow the heat from the sun to increase the internal pressure. When paddling, the colder temperature of the water may cause a slight loss in chamber pressure. It is a good idea to carry a pump with you so that you can add some air to the chambers if necessary.

## BOARD CARE AND STORAGE

**FUNWATER** has chosen PVC to provide superior protection from ultraviolet light. However, to ensure extra years of flexibility and bright colors, avoid storing the board where it will be exposed to weather or in direct sunlight.

Please review the following list for storage and board care tips.

- ◎ Before storing, hose off the board and let it dry completely to prevent mildew buildup.
- ◎ Do not use harsh chemicals for cleaning. Most dirt can be removed with a mild soap and fresh water.
- ◎ You may store the board inflated or deflated. If you deflate the board, we recommend that you store it in the protective bag that came with the board.
- ◎ We do not recommend hanging the board.
- ◎ Do not store in extreme conditions (i.e. above 150F or below -10F)
- ◎ Store in a clean, dry place.

## WARRANTY

**FUNWATER** provides a limited 1 year FABRIC/1 years THE SEAMS/1 year ACCESSORIES warranty. **FUNWATER** warrants each stand up paddlboard to be free from defects in materials and workmanship for the period listed below. **FUNWATER STAND UP PADDLE BOARD** under normal operating conditions(without personal damage),if products have quality problems in 1 year,you have maintenance or change defective parts. We provide 1 year warranty. The warranty period for the board is one year.

### This warranty does not cover:

- ⊗ Normal wear and tear and discoloration from environmental exposure
- ⊗ Damage caused by abuse or failure to perform normal maintenance.
- ⊗ Damage caused by hitting submerged objects, beaching, or dropping
- ⊗ Damage caused by mooring or storing board in water.
- ⊗ Transportation of board or parts to **FUNWATER** Stand Up Paddleboards or its dealers.
- ⊗ Any board used as a rental or placed in commercial service.
- ⊗ Any other consequential damage, incidental damages or incidental expenses, including damage to property. Some states do not allow the exclusion or limitation of incidental or consequential damages, so the above limitation may not apply to you.

## RETURN CONDITIONS

To Obtain Warranty Service: Within 30 days of discovering a defect, please contact with Funwater Paddle board dealer from whom you purchased your board.

## LIABILITY LIMITATIONS

Implied Warranties: Any implied warranties, including implied warranty of merchantability and fitness for a particular purpose, shall be no longer than the duration of this expressed warranty. Some states do not allow limitations on how long an implied warranty lasts, so the above limitations may not apply to you. **FUNWATER** Stand Up Paddleboards makes no expressed warranties in addition to this limited warranty. **FUNWATER** Dealers have no authority to make warranties on behalf of **FUNWATER** Stand Up Paddleboards in addition to, or inconsistent with, those stated herein.

To the extent any provision of this warranty is prohibited by Federal, State or Municipal law and cannot be preempted, it shall not be applicable. This warranty gives you specific legal rights.

## SAFETY & CARE

- For your own safety please attach the coiled leash provided to your calf or ankle at all times. Secure one end to the D-ring at the rear of the board and securely attach the velcro strap to your calf or ankle.
- Whilst paddling please consider appropriate clothing for the weather or climate. It is highly recommended to wear a buoyancy aid vest or other personal flotation device, and a wetsuit in cooler conditions.
- Stay hydrated by packing a water bottle in your cargo area. You can secure a bag or cooler under the cargo bungees with ease.
- Store your mobile phone in the waterproof case provided. Also, consider packing a whistle or flashlight in case of an emergency.
- Your board can expand and over-inflate in very hot temperatures. Please check the air pressure and deflate your board as necessary.
- Please pack and store the SUP in the backpack provided, in a cool dry place and away from direct sunlight.
- You should clean and maintain your board after each use. Hose down if necessary to prevent mildew build-up in storage. Do not use harsh chemicals for cleaning. Most dirt can be removed with mild soap and water.
- A repair kit is provided, with extra patches and a valve tightening tool. From time-to-time your valve may need tightening to prevent any air leaks. To tighten the valve first ensure that the board is fully deflated. Insert the tool into the valve and push upwards from the underside of the board to ensure that the valve is making firm contact with the thread. Next, turn the tool clockwise until the valve is fully tightened and secure.
- Please ensure that no water gets inside of your SUP as this can severely damage the board. Drain any water and dry thoroughly before re-attaching the valve and inflating.



FUN WATER OUTDOOR INC.

### JOIN #FUNWATER

For even more support, skills, tips and tricks, to share SUP stories, photos and videos of your adventures and more -please join the Funwater SUP Paddle Board Owners Club on Facebook.

As a member of this ever-expanding online community you'll have the full support of FUNWATER crew members and board owners just like you!

Sign up to our newsletter for exclusive offers and news:

**[www.funwaterboard.com](http://www.funwaterboard.com)**

**Contact us@FUNWATER**



If you have any questions, please feel free to contact us.  
We are always here for you.

**E-mail: [info@funwaterboard.com](mailto:info@funwaterboard.com)**

Once manual are lost, welcome to download E-manual at our website.