

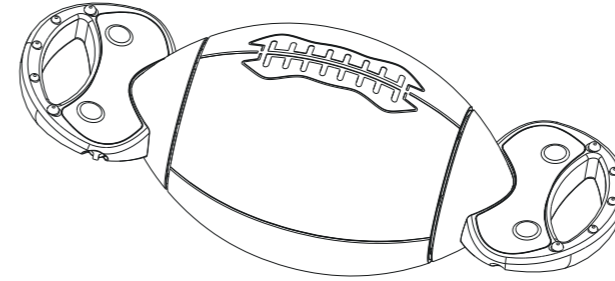


USER MANUAL

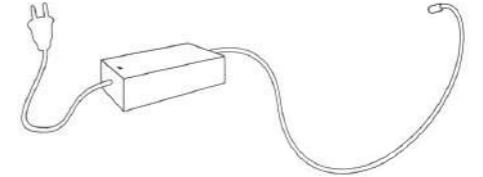
Contents

1. Package Contents	01
2. Product Overview	02
3. Before Riding	03
4. Riding Basics	04
5. Charging	06
6. Safety Notice	07
7. Maintenance	08
8. Service and Warranty.....	10
9. Products Specs	12
10. Question & Answer	13
11. Contact Us	14

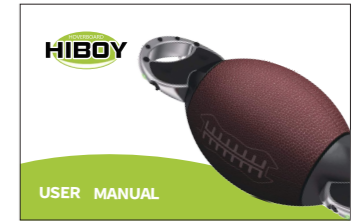
1. Package Contents



1. Product

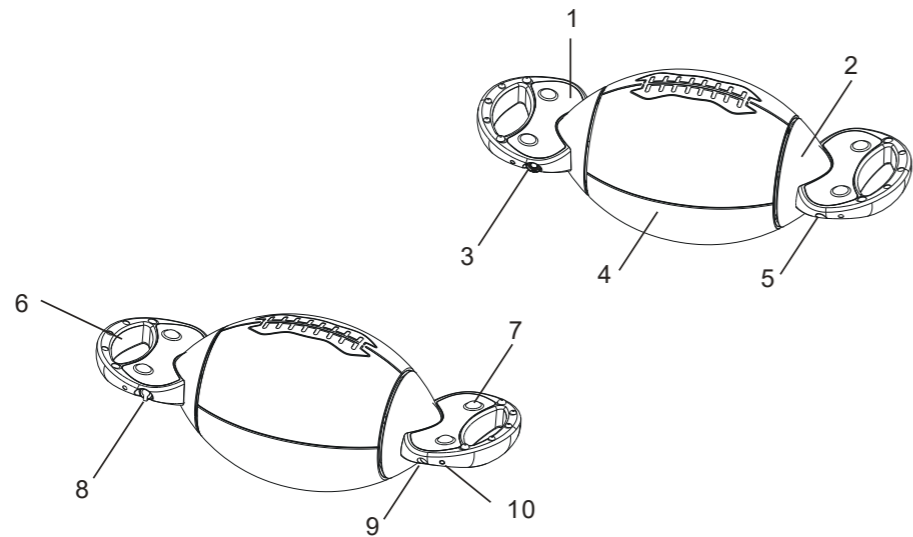


2. Charger



3. Manual

2. Product Overview



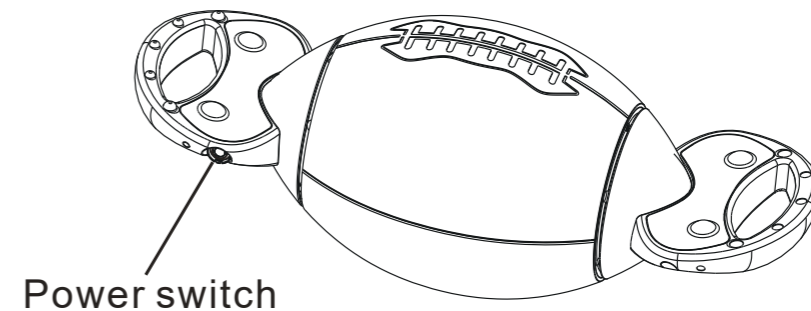
1.Pedal 2.Fender cover 3.Power button 4.Tyre 5. Buzzer 6. Handle 7. Pedal sensor 8. Charging port 9. Battery capacity indicator 10. LED indicator

3. Before Riding

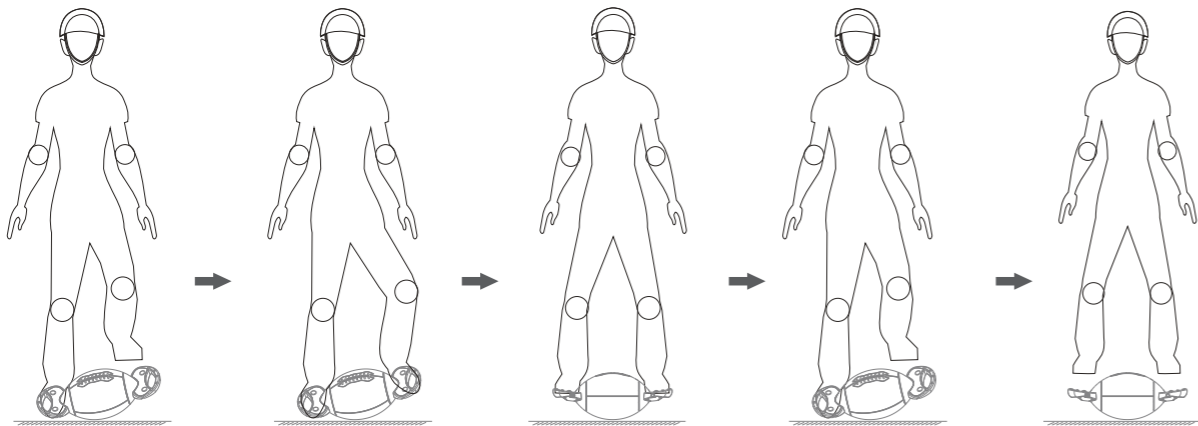
Press the power button once to power on/off the HoverFootball.

Calibration:

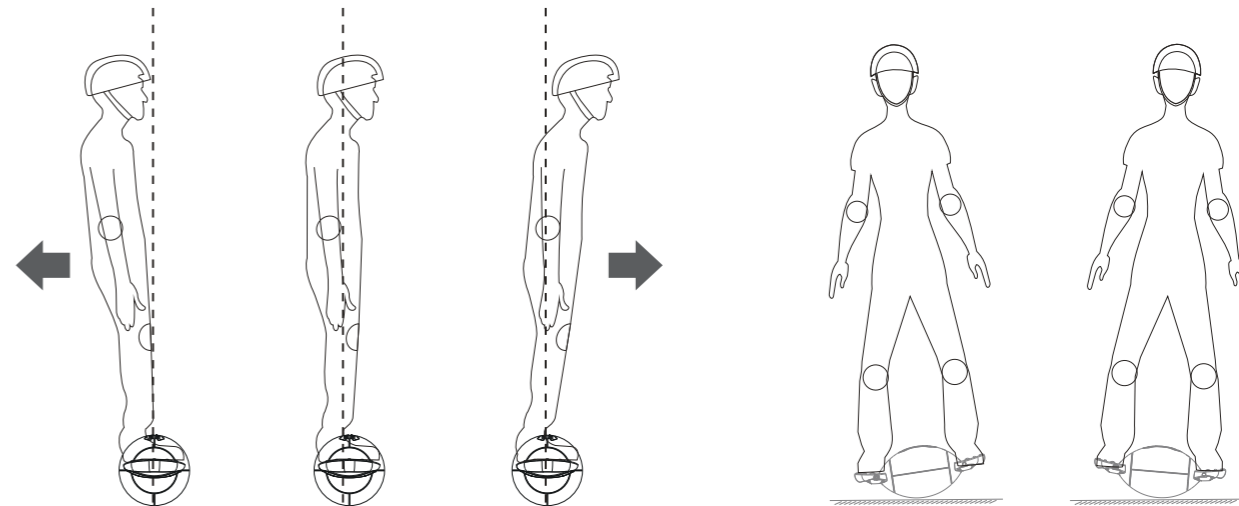
1. Turn off the HoverFootball, and put it on flat ground;
2. Long press the power button until you hear Bi Bi sound;
3. Restart the Hoverfootball, now you've finished calibration.



4. Riding Basics



1. Press the power button to turn on the scooter.
2. Put one foot onto one side's pedal, and make the pedal touch the ground.
3. Put another foot onto another side's pedal, balance the HoverFootball first then you can ride it.
4. When you wanna get off the scooter, slower down the speed, when the HoverFootball is gonna incline, take one foot off the pedal and step on the ground.



Go forward: Incline your body forward and ride forward.

Go backward/brake: Incline your body backward and ride backward/brake.

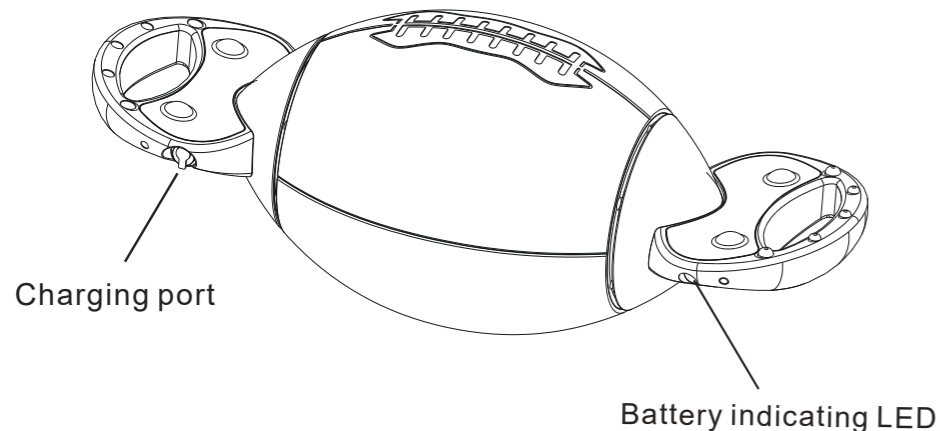
Turn left: Incline the body and HoverFootball to the left.

Turn right: Incline the body and HoverFootball to the right.

5. Charging

Attention for charging:

1. Please use the original charger in the box only;
2. Please turn off the HoverFootball before charging, and do not move the HoverFootball while charging.
3. When the charger indicator changed from red to green, it means the HoverFootball is fully charged, please take off the charger.
4. Please put the waterproof cap onto the charging port when finished charging.



6. Safety Notice

1. The Hoverfootball has been designed as a recreational product. Before mastering riding skills, you need to practice. Hiboy Inc. is not responsible for any injuries or damage caused by a rider's inexperience or failure to follow the instructions in this document.
2. Please understand that you can reduce the risk by following all the instructions and warnings in this manual, but you cannot eliminate all the risks. Remember that whenever you ride the Hoverfootball you risk injury or death from loss of control, collisions, and falls.

When entering into public spaces always comply with the local laws and regulations. As with other vehicles, faster speeds require longer braking distance. Sudden braking on smooth surfaces could lead to wheel slip, loss of balance, or falls. Be cautious and always keep a safe distance between you and other people or vehicles when riding. Be alert and slow down when entering unfamiliar areas. Users are responsible for following all local, state, and federal laws regarding the use of this product.

3. Always wear a helmet when riding. Use an approved bicycle or skateboard helmet that fits properly with the chin strap in place, and provides protection for the back of your head.
4. Do not attempt your first ride in any area where you might encounter children, pedestrians, pets, vehicles, bicycles, or other obstacles and potential hazards.
5. **PARENTAL/ADULT SUPERVISION IS NECESSARY WITH CHILDREN UNDER 12.** If you are under 18, please get your parents permission.
6. The Hoverfootball is not for users weighing less than 44lbs/20kg or more than 220lbs/100kg. The maximum weight limit of 220 lbs (100 kg) includes items that might be worn or carried such as backpacks, clothes, or personal items. Failure to adhere to the minimum and maximum weight limits can cause personal injury to the user and damage to the Hoverfootball. Meeting the weight restrictions does not necessarily mean the person is the appropriate size for fitting on, operating, riding, and controlling the device.

7. Do not allow anyone to ride your Hoverfootball on his/her own unless they have carefully read this manual. The safety of new riders is your responsibility. Assist new riders until they are comfortable with the basic operation of the Hovereshoes. Make sure each new rider wears a helmet and other protective gear.

8. Before each ride check for loose fasteners, damaged components, and low tire pressure. If the Hoverfootball makes abnormal sounds or signals an alarm, immediately stop riding.

9. Never ride at high speeds on uneven terrain or slopes. Never ride in the dark, or dimly lit areas. Do not ride in the snow in the rain, or on roads which are wet, muddy, icy, or that are slippery for any reason. Do not ride over obstacles (sand, loose gravel, or sticks). Doing so could result in a loss of balance or traction and could cause a fall. Never ride backwards for long distances or at high speeds.

7. Maintenance

Clean: Please clean your Hoverfootball so that they can maintain the best performance. You can wipe the Hoverfootball with a soft and wet cloth.

NOTE: The IP Rating of the mainframe is IP54, IP Rating of the battery pack is IPX6. Do not wash your Hoverfootball with gasoline, acetone, or other corrosive/volatile solvents. These substances may damage the appearance and internal structure of your Hoverfootball. Do not wash your Hoverfootball with a power washer or high pressure hose. Make sure the Hoverfootball is powered OFF, the charging cable is unplugged, and the rubber cap on the charge port is tightly sealed before cleaning; otherwise you may expose yourself to electric shock or damage the electronic components. After flushing you must wipe them dry as soon as possible and place them in a ventilated place to dry to avoid corrosion of the steel parts. When not in use, try to store it indoors in a dry, cool place. Try to avoid storing it outdoors for a long time. Sunlight exposure and very hot/cold environments will ruin the appearance of the Hoverfootball.

Store: Please try to store the Hoverfootball in a cool and dry place between 0°C and 40°C. In extremely humid environments the interior of the Hoverfootball may suffer condensation or even water accumulation, which may damage the battery rapidly. In daily use, try to avoid recharging the Hoverfootball until completely exhausting the battery.

If the battery is low, charge it as soon as possible. Please charge the Hoverfootball every other month to preserve the battery.

Note: Do not pierce the battery with sharp objects. Do not use heavy objects to hit the battery. It is forbidden to put the battery into fire or water to avoid danger or environmental pollution.

Disposal: When disposing of Hoverfootball or batteries, they must be recycled according to the regulations and standards of each region.

8. Service and Warranty

1. The warranty period is consistent with the national and local warranty policy. The warranty period is calculated from the date of purchase by the user (on the basis of the date on the purchase receipt).

2. Maintenance costs beyond the warranty period and beyond the scope of the warranty only incur maintenance costs.

3. Not covered by the free warranty obligation

The product or parts that have exceeded the warranty period;

Failure or damage caused by not following the instructions for use;

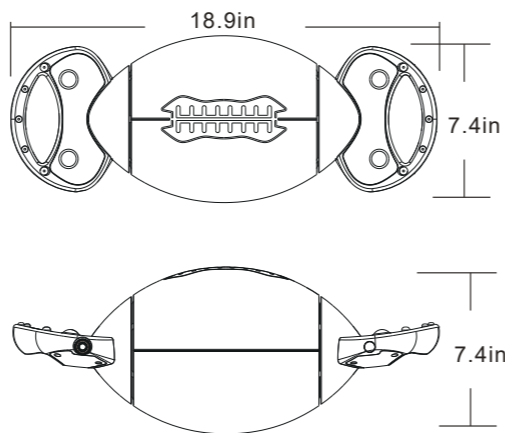
Damage caused by abnormal operation and man-made or natural disasters;

Damage caused by dismantling or changing any part (such as lines) by yourself.

Part Name	Warranty Period	Exception	Note
Li-ion Battery	6 months	1. Damage due to long-term power lack 1. Water log	Replacement out of warranty will be charged at cost price
Controller	12 months	1. Damage by strong deliberate impact 1. Water log	Replacement out of warranty will be charged at cost price
Motor	12 months	1. Damage by strong deliberate impact 2. Water log	Replacement out of warranty will be charged at cost price
Plastic Parts Rubber Parts Tires LED Lights	Quick-wear parts are not covered by warranty		Replacement parts are not covered by warranty will be charged at cost price

9. Products specs

Max load	220LBS/100KG
Product weight	16.5LBS/7.5KG
Product size	18.9*7.4*7.4IN/480*189*189MM
Tyre size	7.4*8.3IN/189*210MM
Max speed	12MPH/7.4KM/H
Max distance	6.2-9.3MI/10-15KM
Battery capacity	50.4V 2.0Ah
Motor Power	350W
Charging time	1.5-2.5H



10. Question & Answer

1. What if the Hoverfootball arrived missing accessory or broken part?

A: Please take a photo and send to Hiboy Support Team by sending email: us.support@hiboy.com And Hiboy Support Team will reply you soon and send correct accessory or part replacement.

2. When the Hoverfootball can't keep its balance or something goes wrong during the ride

A: Please try to reboot or recalibrate the self-balancing.

3. The hoverfootball can't ride in the direction you expect?

A: It may be pedal sensor failure, please contact customer service and attach video.

11. Contact Us

Contact us if you experience issues relating to riding, maintenance and safety, or errors/faults with your Hiboy Product

HIBOY LIMITED

18351 Colima Rd APT 983 Rowland Heights CA 91748

E-mail Service: us.support@hiboy.com



@Hiboy_Official



hiboyus



@HiboyUS



HiboyUS



www.hiboy.com