

JASHEN

Product Manual

Model: M12



Please read this manual thoroughly before using and save it for future reference.

Attention matters

Please read this user manual carefully before using the product and keep it for future reference.

Before using your appliance for the first time, read these original operating instructions, act in compliance with them, and keep them for later use or for subsequent owners.

1.1 Use the floor cleaner exclusively for cleaning hard floors and not on flexible items such as carpets.

1.2 Do not immerse the charger or the mop head in the water to avoid injury.

1.3 Protect the appliance against heat, hot gas and hot microwave oven.

1.4 Do not exceed the "MAX" marking when filling to prevent water from spilling.

1.5 Do not absorb items that are burning, such as cigarette butts, matches or ash with waste heat.

1.6 When charging, first determine whether the voltage used is the same as the rated voltage on the nameplate of the power adapter. Use the following adaptor:



1.7 If the charger plug and other parts of the power cord are damaged, do not use this charger in case of visible damage.

1.8 Charge the battery with the original enclosed charger or a charger approved by JASHEN only.

1.9 When cleaning the product, the power adapter should be powered off to prevent accidental electric shock.

1.10 If the battery can not be appropriately charged, please take the machine to the manufacturer's designated repair point for repair. The battery cannot be removed for other uses.

1.11 When the battery cannot be used, it must be handled reasonably. It should not be thrown into the fire or water to avoid explosion or pollution.

1.12 This appliance can be used by children aged from 8 years and above and persons with educed physical, sensory or mental capabilities or lack of experience and knowledge if they have been given supervision or instruction concerning use of the appliance in a safe way and understand the hazards involved. Children shall not play with the appliance. Cleaning and user maintenance shall not be made by children without supervision.

1.13 Please do not use the accessories provided by another company, as it may cause personal injury.

1.14 Do not use the device for other purposes.

1.15 Do not use the device outdoors.

1.16 If the temperature is below 0 °C, the machine will stop running.

1.17 To prevent the device from getting damaged, keep the device indoors away from sunshine and rain.

1.18 The temperature of the water added to the tank should not exceed 50 degrees.

1.19 This device can only be used on hard floors with the waterproof coating (e.g., painted parquet, glazed tiles, linoleum).

1.20 It is recommended to clean or aspirate large particles on the ground before starting cleaning. This will remove dust or loose particles from the ground before starting wet cleaning.

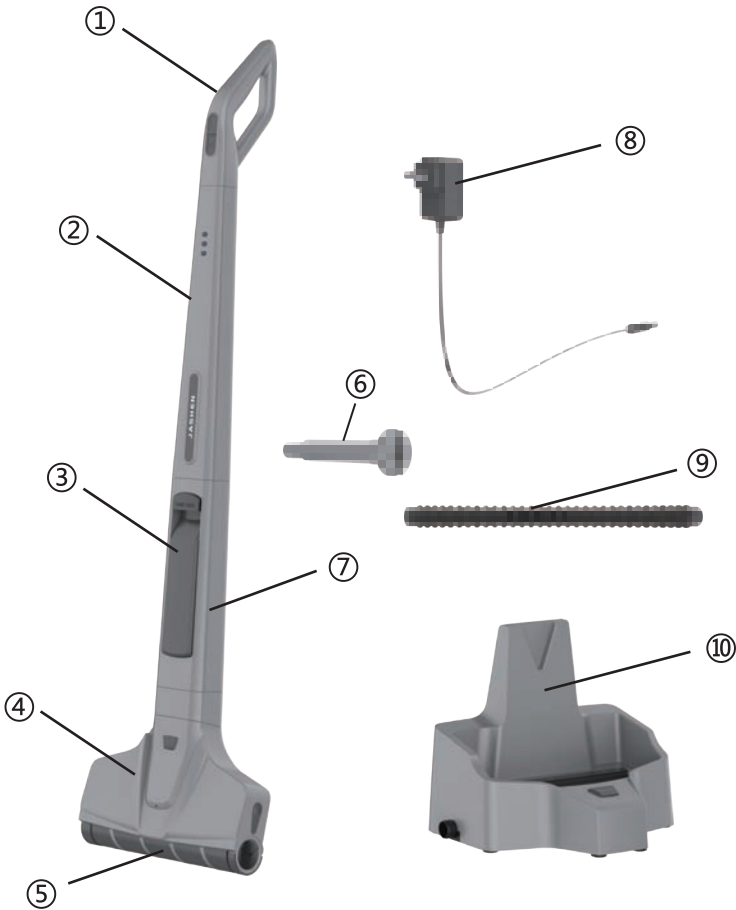
1.21 To avoid leaving footprints on the ground that has just been cleaned, it is necessary to complete the cleaning work from inside to outside.

1.22 A hazard may occur if the appliance runs over the supply cord.

1.23 This appliance contains batteries that are non-replaceable.

1.24 For the purposes of recharging the battery, only use the detachable supply unit provided with this appliance.

For home use only



- 1.Handle 2.Power display 3.Water tank 4.Mop head
5.Microfiber roller 6.Bolt 7.Main body 8.Power adapter
9.Sewage pipe 10.Storage station

Product assembly

The product is large in size. For convenient transportation and storage, the handle, power display, water tank, tractor unit, power adapter, storage base, and drain pipe are separately packaged. Please follow the steps below to assemble the product when using it for the first time.

3.1 *Assembly of the storage station and the sewage pipe.*

Align one end of the sewage pipe with the sewage pipe joint of the storage station, and insert it as shown in the left of Figure 3-1 to complete the assembly, as shown in the right of Figure 3-1.

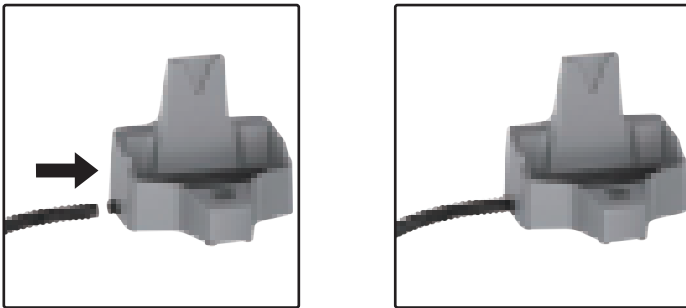


Figure 3-1

3.2 *Assembly of the power display and the water tank.*

Step 1: Use a coin or screwdriver to take out the bolts on the main assembly of the tank (see Figure 3-2a);

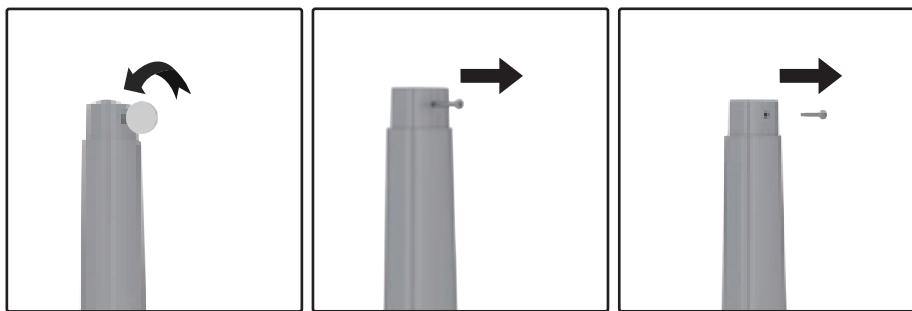


Figure 3-2a

Step 2: Insert the power display into the water tank, then insert the bolt and lock it with a coin or a screwdriver (see Figure 3-2b).

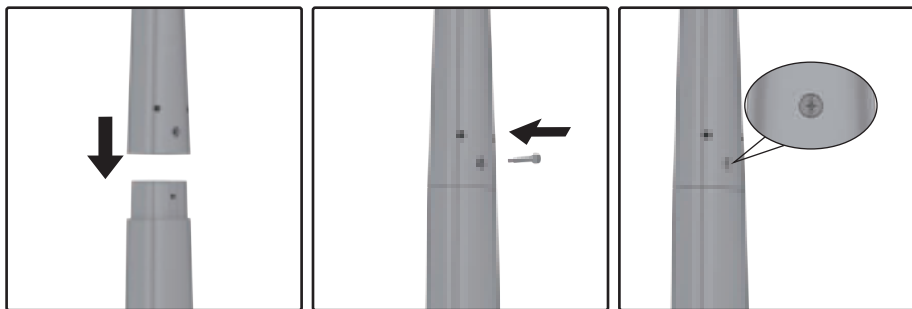


Figure 3-2b

3.3 ***Assembly of the mop head and the water tank.***

Insert the water tank into the mop head until you hear the slider connected with a “click” sound to complete the assembly (see-Figure 3-3)

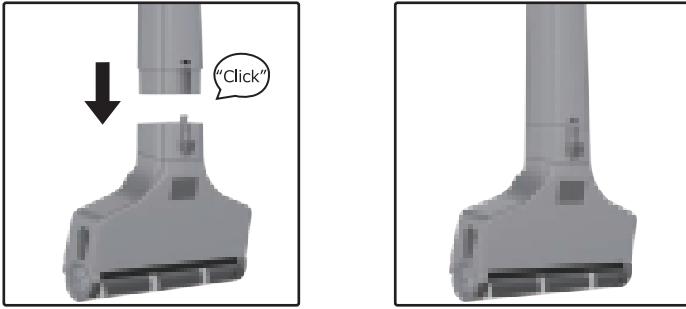


Figure 3-3

3.4 **Assembly of the handle and power display.**

Align the handle with the power supply display until you hear the slider connected with a “click” sound to complete the assembly (see Figure 3-4)

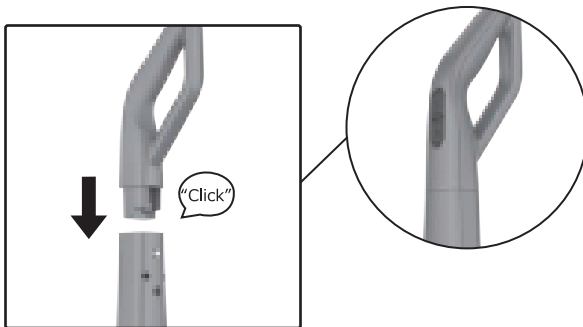


Figure 3-4

3.5 **Combination of electric mop and storage station.**

Generally, the storage station should be placed in the toilet with sewer, first place the storage station on the level ground, then insert the sewage pipe into the sewer to facilitate sewage discharge.

When putting the electric mop in the storage station, first let the mop head enter the positioning groove of the storage station, and then lean back until the tractor buckles into the storage station (Figure 3-5).

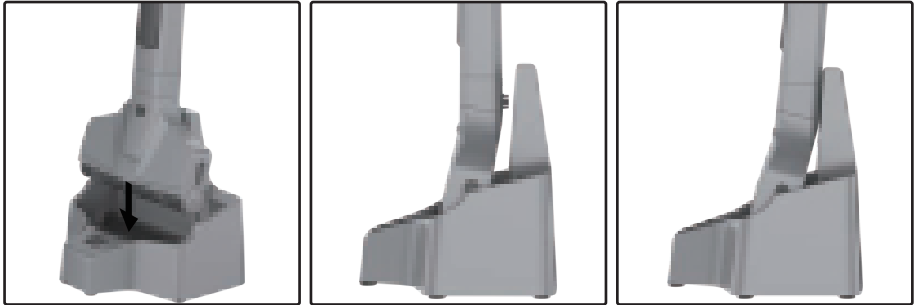
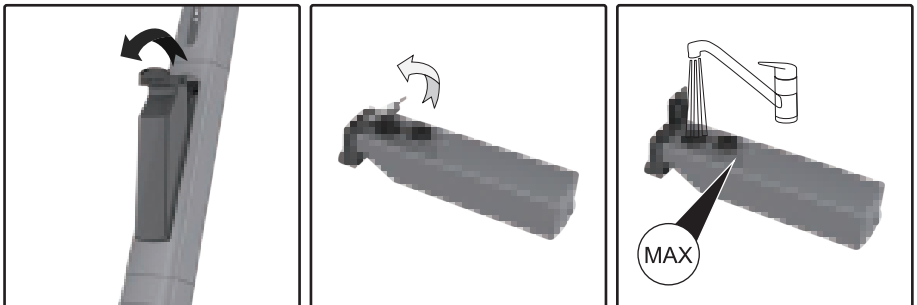


Figure 3-5

Instructions

4.1 *Water tank operation.*

Before using the product, fill the water tank with water or cleaning solutions first. The operation steps are as follows (Figure 4-1): Take the water tank out from the machine → pry the rubber stopper → fill the water tank with water or cleaning solutions → cover the rubber stopper → put the water tank back the machine.



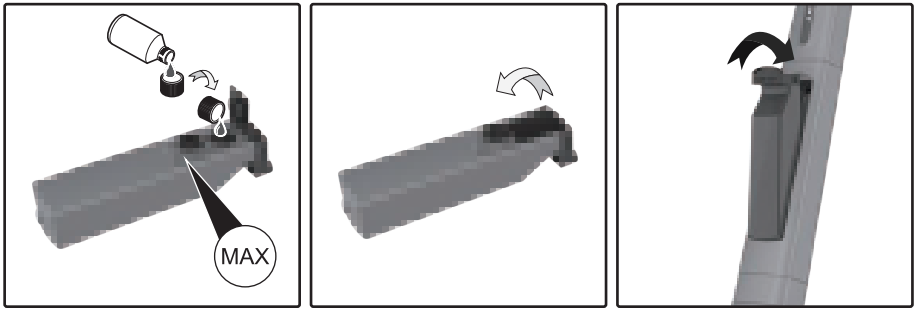


Figure4-1

4.2 **Product Operation.**

There are two opening keys on the handle, the water spray button ② and the power button ①. Press the power button ① → the electric mop starts → the battery indicator will light up → the roller starts to clean the ground → Keep pressing the spray button → the nozzle on the mop head will continue to spray water → release the spray button → stopping spraying. After cleaning → pressing the power button → turn off the appliance → the battery indicator off.

The battery indicator is used to indicate the battery level. When the lamp is flashing, it indicates that the battery is low, the device will stop automatically after 2 minutes of operation (Figure 4-2a, 4-2b).

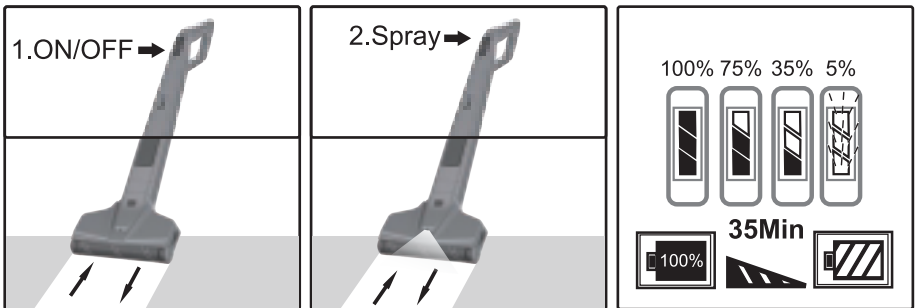


Figure 4-2a

Figure 4-2b

Charging instructions

5.1 Place the machine on the storage base as described in 3.5, and insert the small end of the power adapter into the charging stand as shown (Figure 5-1)

Please note that the specified JASHEN 500mA charger should be used for charger.

5.2 Plug the big end of the electrical adapter into the power plug-in board (Figure 5-2). The battery indicator flashes to indicate the charging starts. As the battery level increases, the lights are measured one by one. After about 4 hours, all three lights are on, which means that the electricity is full.

Please note that the device cannot be started during charging.

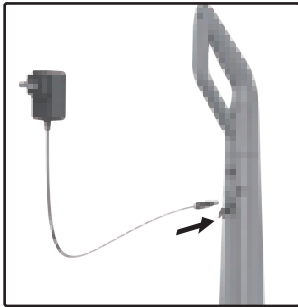


Figure 5-1

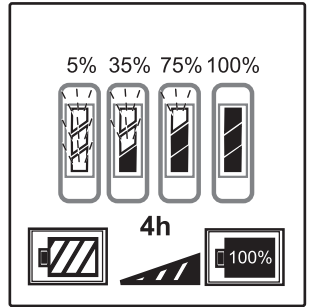
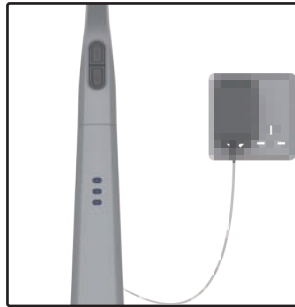


Figure 5-2

Cleaning and Maintenance

6.1 Self-cleaning.

Add water to the storage station (do not exceed the Max line) → put the machine into the storage station (see 3.5) → turn on the machine → press the storage station button → release the button after the sewage is drained → turn off the machine

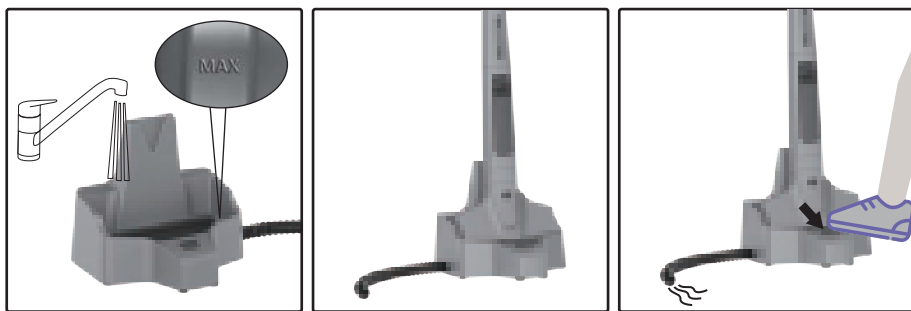


Figure 6-1

6.2 ***Roller cleaning.***

When the hair is wrapped around the roller, please clean it as shown below.

Press the roller release button → hold the roller forward and pull out → clean the roller → put the roller end into the rotary shaft → let the roller end cover buckle position and align with the roller release button until you hear the buckle rebound and make a “click”.

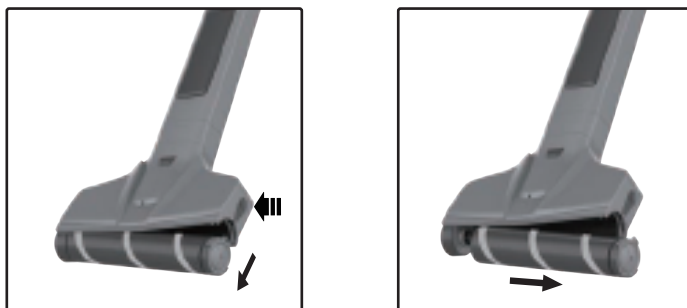


Figure 6-2

Charging instructions

Issues	Cause Analysis	Treatment
Can not charge	The power adapter is not connected The power switch is not turned on <i>Not using the specified charger with the device</i>	Reconnect the power adapter and tighten both ends Check the power switch to make sure the circuit is all connected Use the specified charger with the device
Can not spray water	The water tank is not assembled Water tank without water	Fill the water tank with water and assemble it in place (Reference 4.1)
Can not start	Battery runs out	Charge the battery (Reference 5.1, 5.2)
Poor cleaning effect	Roller is dirty Roller surface is worn out	Clean the roller (Reference 6.2) Replace a new roller
The warning light is on	Roller is stuck Battery runs out	Clean the roller(Reference 6.2) Charge the battery(Reference 6.1)
Too many bubbles while cleaning	Foamstop is not added The water in the storage station exceeds the Max line	Add some foamstop Do not exceed the Max line

Technical Parameters

Product model	M12
Rated voltage	DC 7.2V
Rated power	40 W
Adapter input	100-240V ~50/60Hz
Adapter output	9.6V 500mA
Battery type	Lithium-ion
Operating time with a full charge	35min
Charging time for empty battery	4h
Roller revolutions per minute	600rpm
Freshwater tank	300ml
Dimensions	310*200*1180mm
Weight (without accessories & cleaning fluids)	2.5kg
Charge cable length	1800mm

ENVIRONMENT-FRIENDLY DIPOSAL

You can help protect the environment!

Please remember to respect the local regulations:

Hand in the non-working electrical equipments to an appropriate waste disposal centre.





     @JashenCleaning



support@jashen-tech.com



support-es@jashen-tech.com



support-uk@jashen-tech.com



support-it@jashen-tech.com



support-de@jashen-tech.com



support-jp@jashen-tech.com



support-fr@jashen-tech.com