

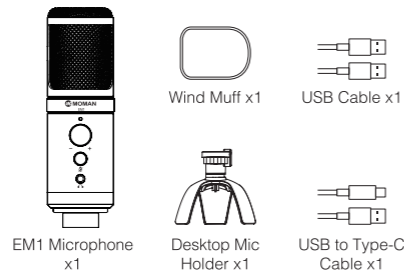
Microphone EM1
User Manual

Thank you for choosing MOMAN product. Please read this manual carefully before use and follow all instructions mentioned herein.

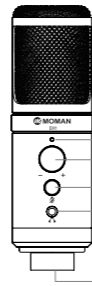
Caring For Your MOMAN Product

- Please keep the product in a dry, clean, dust-free environment.
- Keep corrosive chemicals, liquids and heat source away from the product to prevent mechanics damage.
- Use only a soft and dry cloth for cleaning the product.
- Malfunction may be caused by dropping, impact of external force.
- Do not attempt to disassemble the product. Doing so voids warranty.
- Please have the product checked or repaired by authorized technicians if any malfunctions happened.
- Failure to follow all the instructions may result in mechanics damage.
- Warranty does not apply to human errors.

Package List



Product Introduction



- Working Indicator**

Green Light	Red Light
Normal Recording	Mute Mode On
- Gain Control**
Rotate toward left to decrease and right to increase.
- Mute Mode**
Press once to initiate mute mode, and the working light turns red.
- 3.5mm Monitoring Jack**
For plug-in earphones to monitor the recording in real time. Please mind the loudness.
- USB Output**

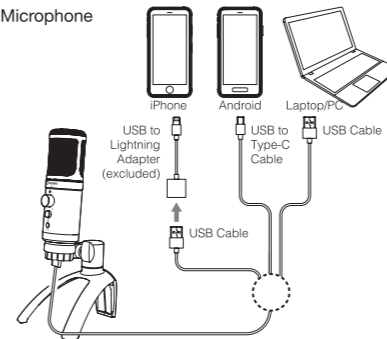
Operations

1. The Use of Wind Muff
Please install the wind muff to the microphone for less plosive sounds and wind noise.

2. The Use of Desktop Mic Holder

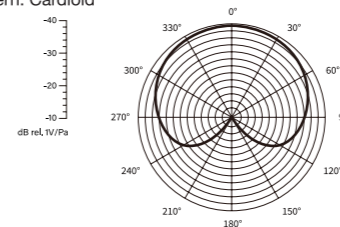


3. The Use of Microphone



Specifications

1. Polar Pattern: Cardioid



2. Performance Parameter

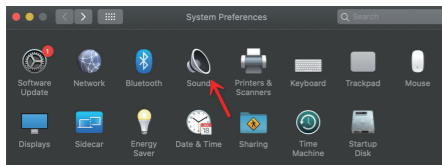
Transducer	Electret Condenser
Frequency Response	20Hz-20KHz
Impedance	≤2.2KΩ
Sensitivity	-45dB+3dB re 1 Volt/Pascal
Sampling Rate	48KHz
Power Supply	5V/1A
Dimensions	47mm x 47mm x 156mm
Output	USB
Net Weight	294.5g

Computer Setup

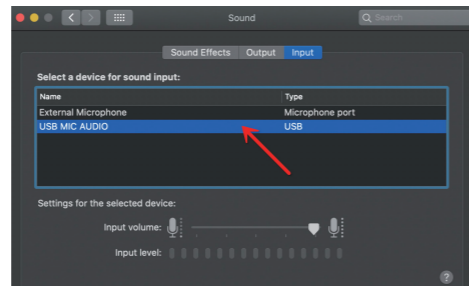
1. Connect EM1 Microphone to your computer with USB cable provided. Make sure the indicating light is on. Driver may take a few seconds to install automatically.
2. In case the EM1 Microphone isn't chosen as priority audio input, you would need to set it by yourself. Click "System Preference".



3. Click "Sound" to display the Sound preference panel.



4. Click the Input tab, select USB MIC AUDIO (or Moman EM1 Microphone) as the device for sound input.



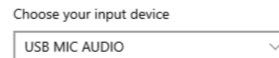
NOTICE:

1. If the USB device couldn't be identified, please restart your computer and replug the mic into other USB port.
2. The driver might install again if you plug into a different USB port.

Windows (i.e. Windows 10)

1. Connect EM1 Microphone to your computer with USB cable provided. Make sure the indicating light is on. Driver may take a few seconds to install automatically.
2. In case the EM1 Microphone isn't chosen as priority audio input, you would need to set it by yourself. Click "System Preference- Privacy-Microphone" and allow access to the microphone.
3. Select USB MIC AUDIO (or Moman EM1 Microphone) as the Input device. When you speak to the mic, the bar-type icon will turn blue and bounce. If it is still unchanged, please reboot your computer and replug the mic in to other USB port.

Input



Certain apps may be set up to use different sound devices than the one selected here. Customize app volumes and devices in advanced sound options.

Device properties



4. Choose your speaker as your output device. If you want to listen to the computer sound through the 3.5mm port in the USB microphone, select USB MIC AUDIO (or Moman EM1 Microphone).

Output



Certain apps may be set up to use different sound devices than the one selected here. Customize app volumes and devices in advanced sound options.

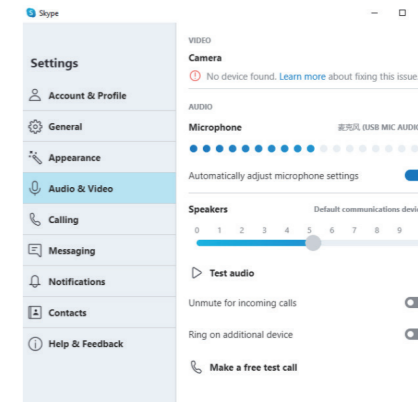
Device properties



Use EM1 Microphone for Video Conferencing (i.e. Skype)

1. Connect EM1 Microphone to your computer with USB cable provided. Make sure the indicating light is on. Driver may take a few seconds to install automatically.
2. In case the EM1 Microphone isn't chosen as priority audio input, you would need to set it by yourself. Click "System Preference- Privacy-Microphone" and allow access to the microphone.

3. Select USB MIC AUDIO (or Moman EM1 Microphone) as the Input device. When you speak to the mic, the bar-type icon will turn blue and bounce. If it is still unchanged, please reboot your computer and replug the mic in to other USB port.



Moman (UK) Limited

Unit 25 Basepoint Business Centre, Aviation Park, West Christchurch, United Kingdom BH23 6NX
www.momanmic.com www.momanx.com www.momanx.co.uk
@MomanGlobal
https://moman.co/youtube