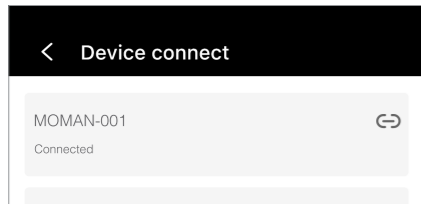


4. The Remote will be shown as "MOMAN-XXX", press the item to connect



5. Return to the menu and test the remote, if it doesn't work, turn off the Bluetooth of your phone and try the same process again

• How to Use APP

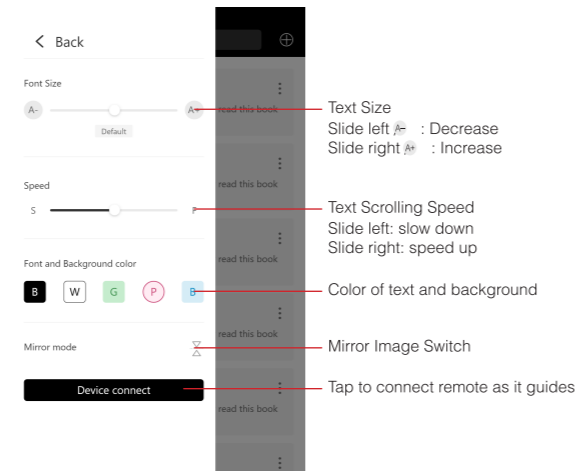
IOS: Search "MomanPrompter" in AppStore or through the link below

Android: Download from Moman Website through the link below

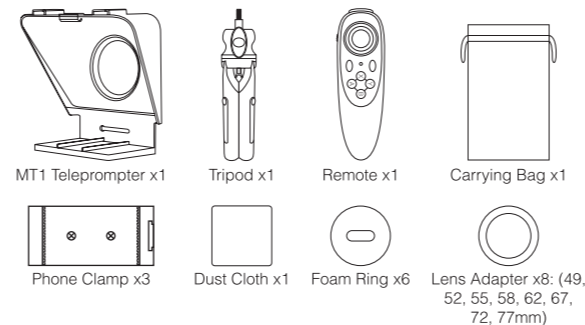


<https://www.moman.co/app>

2. Instructions of using APP



Package List



Specifications

A. Teleprompter

Material	Plastic and Glass
Dimensions	260*220*160mm
Weight	800g

B. Remote

Size	116*45*13.5mm
Wireless Protocol	Wireless 3.0 Compliant
Wireless Distance	2-10m
OS	Android / iOS / PC
CPU	ARM968E-S Core
Battery	Alkaline AAA 1.5V *2
Working time (Continuous game)	About 40 hours
Work Current	0.5-8mA
Standby Current	0.5-1mA
Shutdown Current	<20uA

Moman (UK) Limited

Unit 25 Basepoint Business Centre, Aviation Park, West Christchurch, United Kingdom BH23 6NX

www.momanmic.com www.momanx.com www.momanx.co.uk

@MomanGlobal

<https://www.youtube.com/channel/UC...>



MT1 Teleprompter

User Manual

Thank you for choosing MOMAN product. Please read this manual carefully before use and follow all instructions mentioned herein.

Caring For Your MOMAN Product

- Please keep the product in a dry, clean, dust-free environment.
- Keep corrosive chemicals, liquids and heat source away from the product to prevent mechanics damage.
- Use only a soft and dry cloth for cleaning the product.
- Malfunction may be caused by dropping, impact of external force.
- Do not attempt to disassemble the product. Doing so voids warranty.
- Please have the product checked or repaired by authorized technicians if any malfunctions happened.
- Failure to follow all the instructions may result in mechanics damage.
- Warranty does not apply to human errors.

Product Introduction

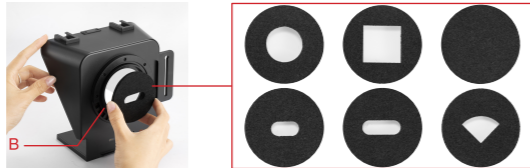
● How to Install Teleprompter

1. Teleprompter Installation for Phone

① Insert the screw to [A], then attach the phone clamp to the screw. Regulate to the proper position then tighten the screw.



② Attach a foam ring to [B].

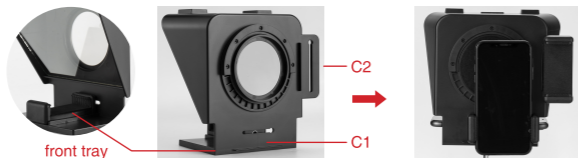


③ Install the phone clamp to the teleprompter at [C1] or [C2] through the screw and tighten to fix the clamp.

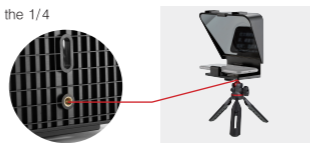
④ Set the phone on the phone clamp.

⑤ Turn on APP and place the phone on the front tray and adjust to the right position accordingly.

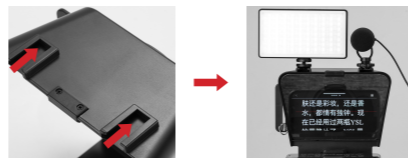
Note: user should increase text size to prevent ghosting and to see clearly.



⑥ Set the teleprompter to tripod through the 1/4 screw.



⑦ Optional: Equip the teleprompter with photography fill light or microphone through cold shoes.



2. Teleprompter Installation for Camera

① Insert the screw to [A], then attach the phone clamp to the screw. Slide to the proper position then tighten the screw to fix the clamp.



② Choose the proper size of lens adapter and attach to the lens of camera.



③ Take off the original adapter ring and mount the camera to [B].



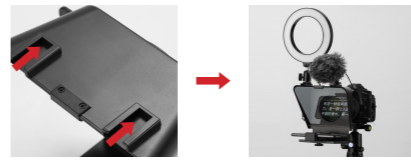
④ Set the camera to tripod through the 1/4 screw, then spin to lock it.

⑤ Turn on the APP and place the phone to the front tray.

Note: To avoid capturing the frame of teleprompter, please use longer mid-focus lens for SLR vertical shooting.



⑥ Optional: Equip the teleprompter with photography fill light and microphone through cold shoes.



● Remote Instructions

Confirm Button: Press to Play/Pause

Joystick: Control the pace of scripts

Mode Switch: No function

Indicator: See Indicator Instructions below

Power button: Press 2 seconds / 8 seconds to turn ON/OFF

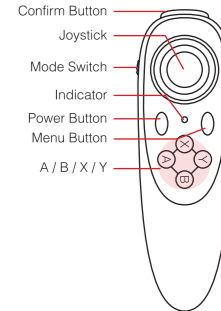
Menu button: Open the menu in app

A: Slow Down the scripts

Y: Speed up the scripts

X: Last line of the scripts

B: Next line of the scripts



● How to Pair the Remote

1. Turn on the Remote and open the Bluetooth connection of your phone
2. Open "Moman Prompter" app
3. Choose "Device connect"

