



Xcess Biosciences Inc.

7144 N Harlem Ave #169
Chicago, IL 60631 USA

<http://www.xcessbio.com>

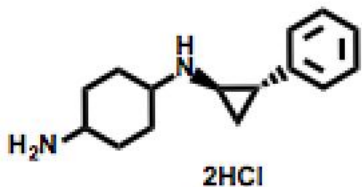
Toll free: 1-866-706-2330

Fax: 1-619- 810-0718

Email: info@xcessbio.com

LSD1 Inhibitor – ORY-1001 (RG-6016)

Chemical Name: N¹-((1R,2S)-2-phenylcyclopropyl)cyclohexane-1,4-diamine hydrochloride



Molecular Weight:	303.27
Formula:	C ₁₅ H ₂₂ N ₂ ·2HCl
Purity:	≥98%
CAS#:	1431326-61-2
Solubility:	DMSO up to 15 mM Water up to 100 mM
Storage	Powder: 4 °C 1 year DMSO: 4 °C 3 months -20 °C 1 year

Biological Activity:

ORY-1001 is a highly potent and selective inhibitor of Lysine Specific Demethylase 1 (LSD1) with IC₅₀ <20 nM. It is highly selective over related enzymes such as MAO-A/B. ORY-1001 affects AML stem cells, a sub-population of cancer cells that has been proposed to be responsible for frequent relapses of the disease. It significantly reduces tumor cell load and increases survival time in mouse models of Acute Lymphoblastic Leukaemia. Currently ORY-1001 is in Phase I/IIA clinical trial for acute leukemia.

How to Use:

In vitro: ORY-1001 was used at 1 μM in vitro.

In vivo: n/a.

Reference:

1. <https://www.oryzon.com/en/therapeutic-programs/our-pipeline>

Products are for research use only. Not for human use.