



**Xcess Biosciences Inc.**

7144 N Harlem Ave #169  
Chicago, IL 60631 USA

<http://www.xcessbio.com>

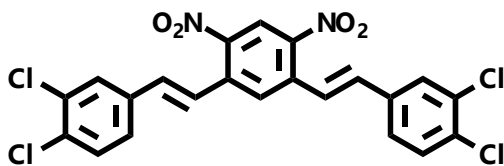
Toll free: 1-866-706-2330

Fax: 1-619- 810-0718

Email: [info@xcessbio.com](mailto:info@xcessbio.com)

## KDM4A/KDM4B Inhibitor – NSC636819

**Chemical Name:** 4,4'-((1E,1'E)-(4,6-dinitro-1,3-phenylene)bis(ethene-2,1-diyl))bis(1,2-dichlorobenzene)



Molecular Weight:	510.15
Formula:	C <sub>22</sub> H <sub>12</sub> Cl <sub>4</sub> N <sub>2</sub> O <sub>4</sub>
Purity:	≥98%
CAS#:	1618672-71-1
Solubility:	DMSO up to 10 mM
Storage	Powder: 4°C 1 year DMSO: 4°C 3 month -20°C 1 year

### Biological Activity:

NSC636819 is a cell permeable and selective novel active-site KDM4A/KDM4B inhibitor with IC<sub>50</sub> ~6.4 μM for KDM4A and 9.3 μM for KDM4B. It inhibits histone demethylase activity on H3K9me3 and induces apoptosis in LNCaP prostate cancer cells in vitro. It also negatively regulates androgen-responsive genes. The overexpression of KDM4A/KDM4B in prostate cancer and their association with androgen receptor suggest that KDM4A/KDM4B are potential progression factors for prostate cancer.

### How to Use:

**In vitro:** NSC636819 was used at 10 μM final concentration in vitro and in cellular assays.

**In vivo:** n/a

### Reference:

1. Chu CH, et al. KDM4B as a target for prostate cancer: structural analysis and selective inhibition by a novel inhibitor. (2014) J Med Chem. 57(14):5975-85.

Products are for research use only. Not for human use.