



**Xcess Biosciences Inc.**

7144 N Harlem Ave #169  
Chicago, IL 60631 USA

<http://www.xcessbio.com>

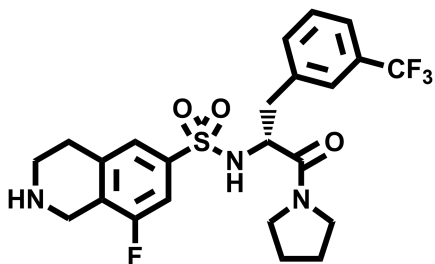
Toll free: 1-866-706-2330

Fax: 1-619- 810-0718

Email: [info@xcessbio.com](mailto:info@xcessbio.com)

## SETD7 Histone Lysine Methyltransferase Inhibitor – PFI-2

**Chemical Name:** (R)-8-fluoro-N-(1-oxo-1-(pyrrolidin-1-yl)-3-(3-(trifluoromethyl)phenyl)propan-2-yl)-1,2,3,4-tetrahydroisoquinoline-6-sulfonamide



Molecular Weight:	499.52
Formula:	C <sub>23</sub> H <sub>25</sub> F <sub>4</sub> N <sub>3</sub> O <sub>3</sub> S
Purity:	≥98%
CAS#:	n/a
Solubility:	DMSO up to 100 mM
Storage	Powder: 4 °C 1 year DMSO: 4 °C 3 months -20 °C 1 year

### Biological Activity:

PFI-2 is a novel potent and selective SETD7 histone lysine methyltransferase inhibitor with IC<sub>50</sub> ~2 nM. It has > 100-fold selectivity over other methyltransferases and other non-epigenetic targets. PFI-2 has been shown to bind to SETD7 by ITC (K<sub>d</sub>=18nM), and biotinylated PFI-2 interacts with SETD7 in pull-down studies.

### How to Use:

**In vitro:** PFI-2 was used at 1 μM in vitro.

**In vivo:** n/a

### Reference:

1. <http://www.thesgc.org/chemical-probes/epigenetics>

Products are for research use only. Not for human use.