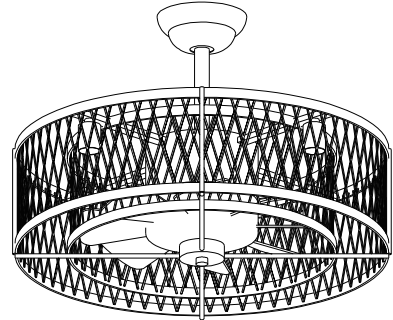


Safety Information

Before starting installation of this fixture or removal of a previous fixture, disconnect the power by turning off the circuit breaker or by removing the fuse at the fuse box. Consult a qualified electrician if you have any electrical questions or need to replace the driver.



- ① Ceiling light is suitable for AC 110V-120V.
- ② Ceiling fan must be installed on a solid ceiling that can be able to withstand more than 30KG.
- ③ The fan blades should be more than 20CM from the ceiling.
- ④ Bulb Model: E26 Bulb(We are not including bulbs), the maximum wattage of each bulb is 60W.

WARNING

⚠ Disconnect the power prior to removing or installing a light fixture.

Warranty

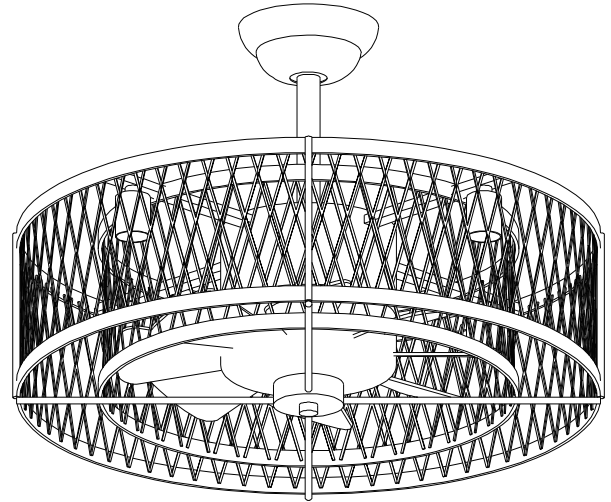
WHAT IS COVERED

The manufacturer warrants this lighting fixture to be free from defects in materials and workmanship for a period of 12 months from date of purchase. This warranty applies only to the original consumer purchaser and only to products used in normal use and service. If this product is found to be defective, the manufacturer's only obligation, and your exclusive remedy, is the repair or replacement of the product at the manufacturer's discretion, provided that the product has not been damaged through misuse, abuse, accident, modifications, alterations, neglect or mishandling.

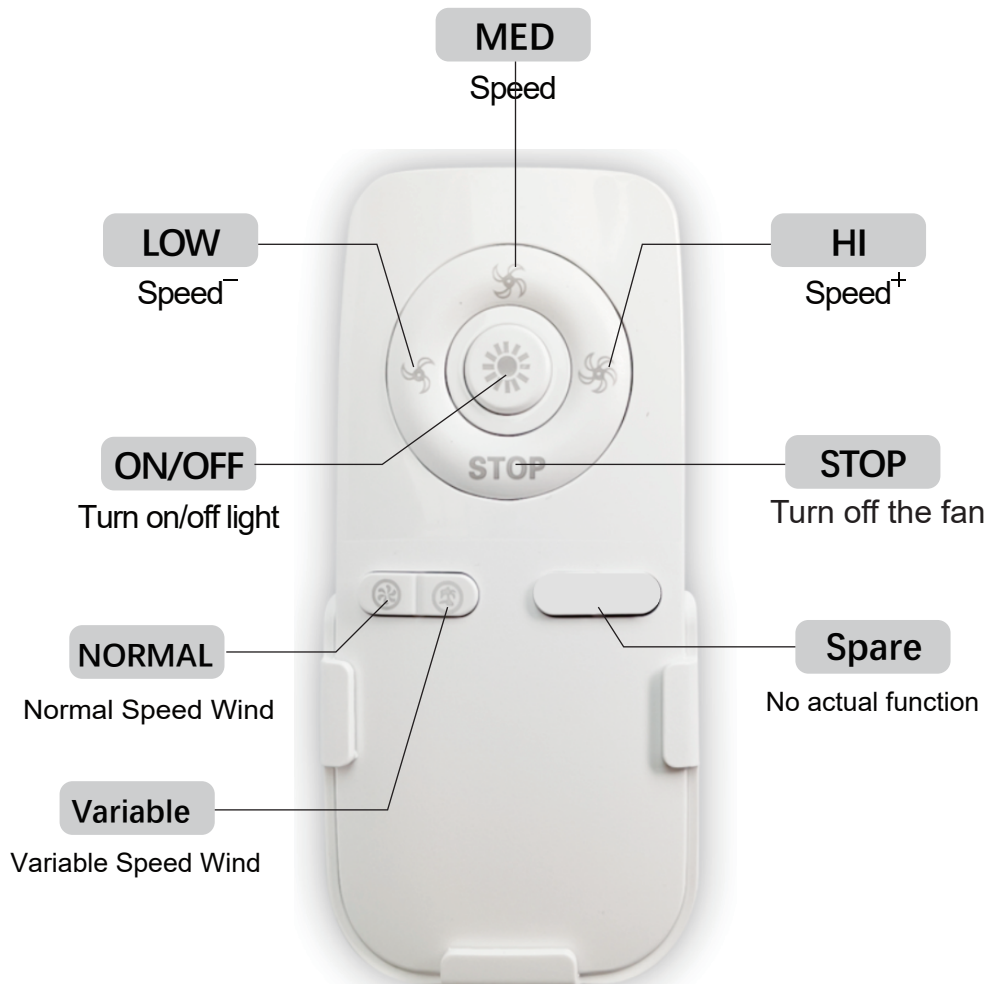
If you have any questions about this fixture, please contact us
USA/CA: support02@dingliled.com
EU: support03@dingliled.com

Electrical Characteristics

Product mode	WS-FPZ10-60B
Bulb model	E26 (60W MAX)
Color	Black
Input voltage	110V-120V
Direction	One direction
Fan speed	3 speeds
Remote control	Yes



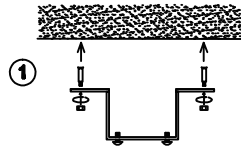
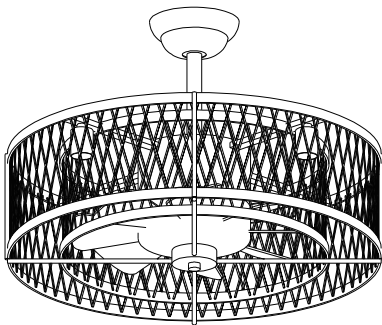
Remote control instruction



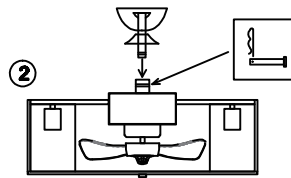
Installation Steps

WS-FPZ10-60B

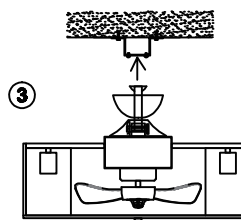
Installation Instruction



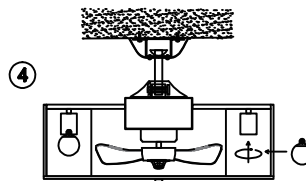
Take out the ceiling box and fixing bracket, fix the hanger on the ceiling, and tighten the screws to ensure safety and firmness.



Take out the boom, put the ceiling box and the horn-shaped cover inside the boom as shown in the picture, then put the boom into the lamp body interface, insert the bolt horizontally, and then insert the safety buckle into the small hole on the bolt, And finally tighten the fixing screws of the boom.



Hang the ball head at the top of the lamp body boom into the fixing bracket, connect the power cord, adjust the balance of the lamp body, and then clip the ceiling box to the fixing screw at the bottom of the fixing bracket, and tighten the screw.



Install the light source, check that it is correct and power on, the installation is complete.

TROUBLE SHOOTING

PROBLEM	REASON	SOLUTION
fan does not rotate	<ol style="list-style-type: none"> 1) Main cables not connected. 2) Check the wires. 	<ol style="list-style-type: none"> 1) Check main & sub circuit breakers or fuse. 2) Check if the wires are connected properly.
Fan noisy	<ol style="list-style-type: none"> 1) Housing screw loose. 2) Wire nut connections rattles against each other. 3) Canopy touches the ceiling. 	<ol style="list-style-type: none"> 1) Tighten all screws. 2) Separate and store all the wire nut connections. 3) Ensure the canopy is not touch the ceiling.
Remote control not working	<ol style="list-style-type: none"> 1) Remote and receiver code different. 2) Battery not installed Weak battery 	<ol style="list-style-type: none"> 1) Check that the code are exactly the same 2) Install remote control battery. 3) Change new remote control battery.

If you have any questions about this fixture, please contact us
 USA/CA: support02@dingliled.com