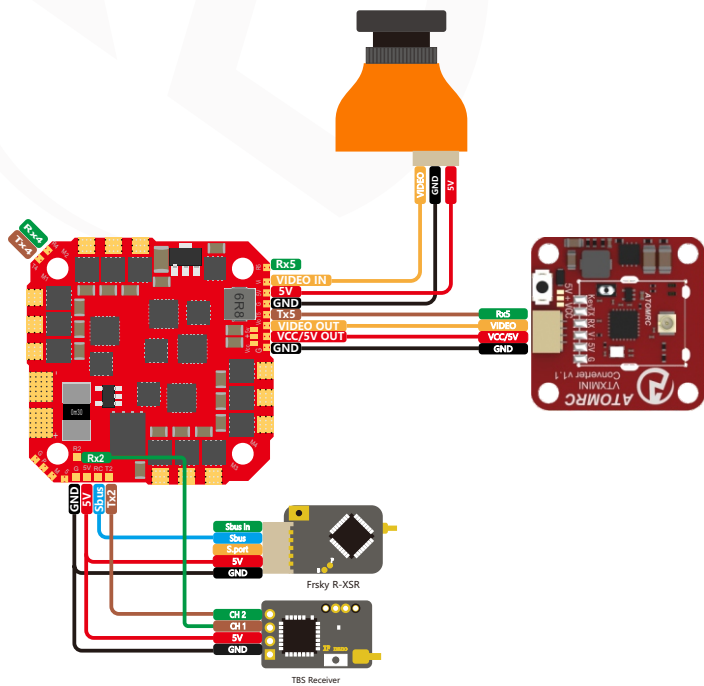
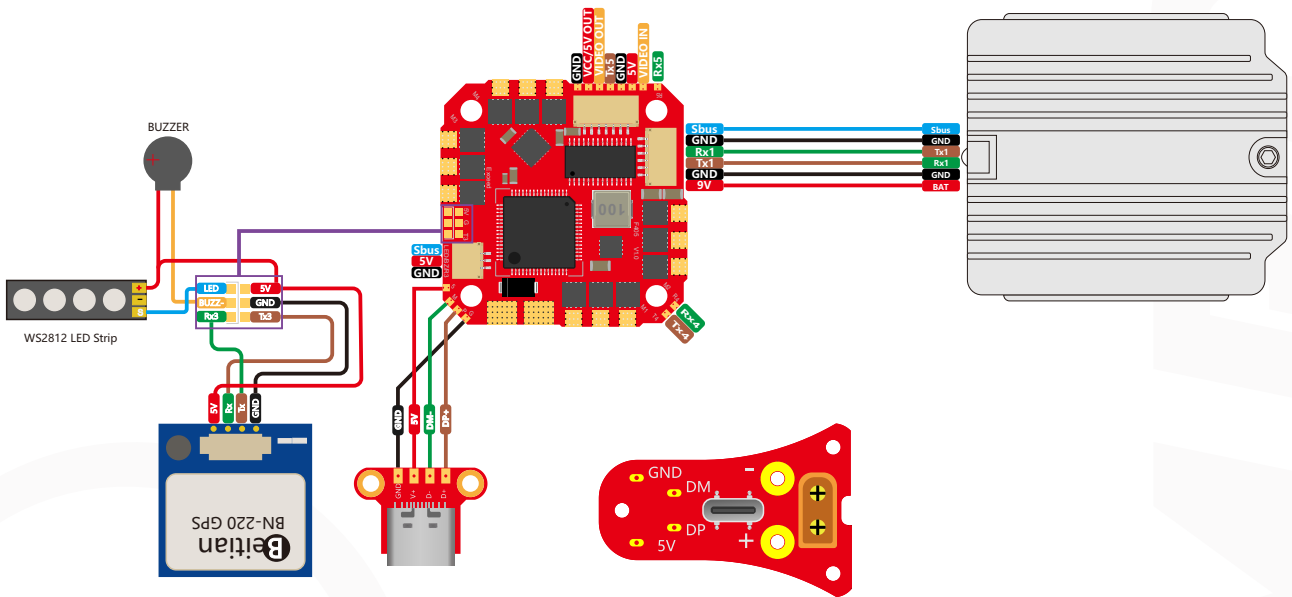


ATOMRC Exceed F405 35A AIO Manual



ATOMRC Exceed F405 35A AIO	
Name	ATOMRC Exceed F405 35A AIO
FC MCU	STM32F405RGT6
Gyro	MPU6000
Blackbox	16Mb Onboard Flash
BEC output	5V 3A、9V 3A
Connector	External USB C
OSD	AT7456E
Uart	5 (UART1、2、3、4、5)
Support LED	Yes
Support BUZZ	Yes
Target	ATOMRCF405(SKZO)
Current Sensor	Yes
Input	2-4S LIPO
Current	Constant: 30A / Burst: 35A
BLHeli	BLHeliS L_H_50_REV 16_7
Mounting pattern	25.5*25.5mm φ2mm
Dimensions	34mm*34mm
Mosfet	Alpha Omega AON7318
Weight	9.7g

Please download the latest user manual at
www.atomrc.com/pages/download
 文件若有更新，请于官网下载最新版本说明书

