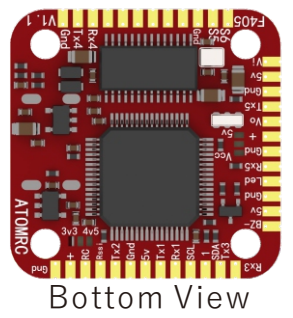
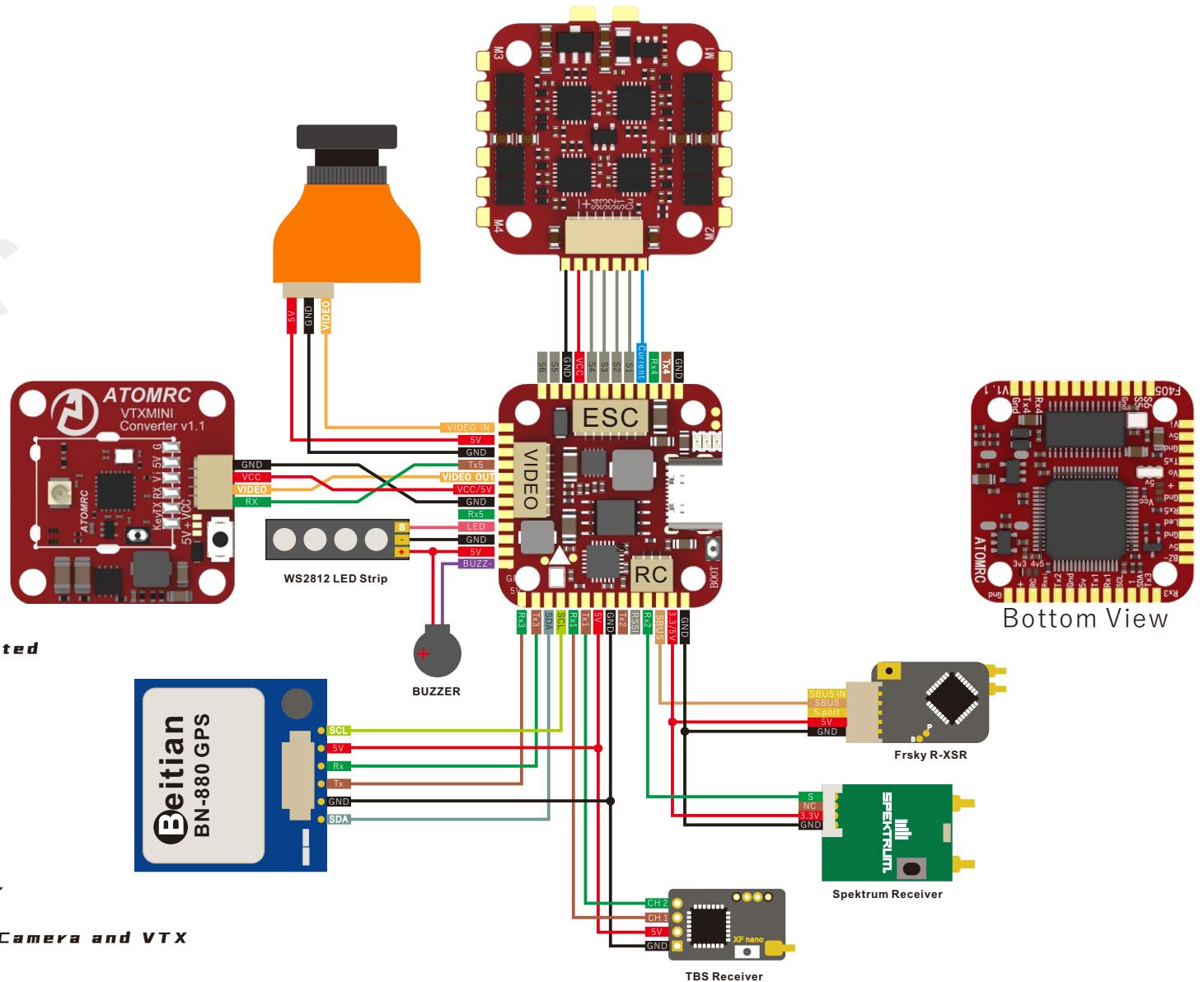


# ATOMRC EXCEED F405 Wiring Diagram



## Specifications

MCU: 168MHZSTM32F405

IMU: MPU6000 accelerometer/gyro (SPI)

OSD: Betaflight OSD

BlackBox: 16M

UART: 5

PWM/Dshot Output: 6

BEC: 3.3/5V

Built in inverter for SBUS (RX2)

Smartaudio & Tramp VTX protocol supported

WS2812 Led Strip : Yes

Beeper : Yes

RSSI: Yes

USB connector: Type C

TARGET: ATOMRCF405

## Package include;

1\* ATOMRC EXCEED F405 FC

4\* silicon damper

1\* JST 1.0mm 3PIN connector for receiver

1\* JST 1.0mm 6PIN connector for ESC

1\* JST 1.0mm~1.25mm 7PIN connector for Camera and VTX