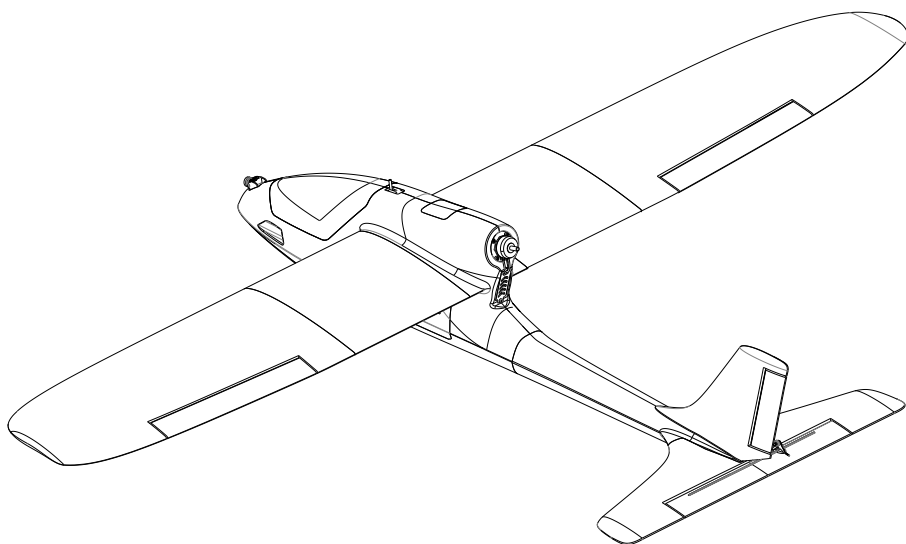




User Manual

Seal



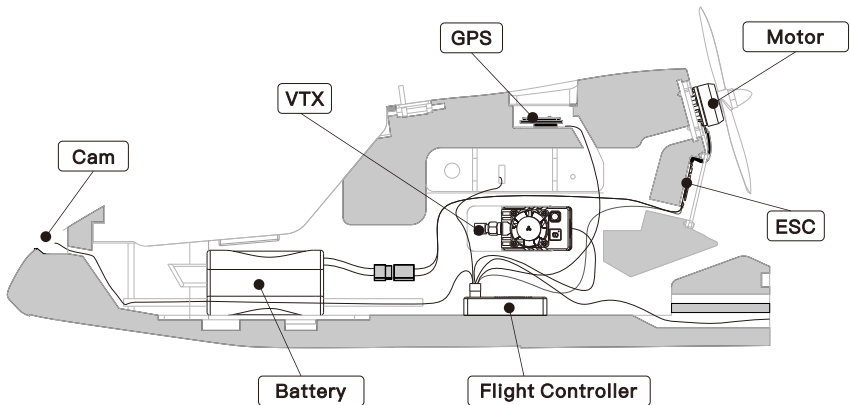
Introduction/简介

The seal is classic glider design, easy for beginners, with detachable wing design, user can choose 1100mm wing span or use extend wing to 1500mm wingspan for different style of Fly. Design for FPV, the ESC, FC VTX and Camera all have installation area. Side door for install Flight controller, easy to wiring and maintain. Easy to build and maintain.

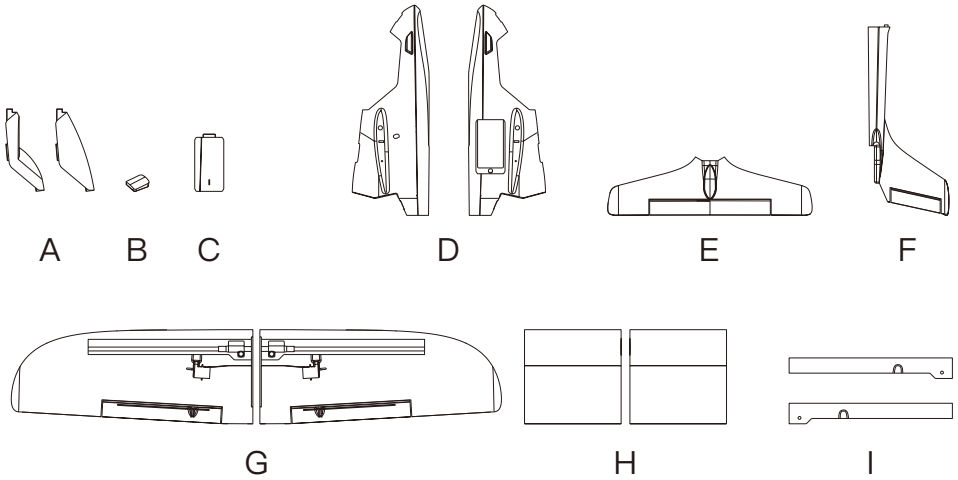
Specifications/规格

Specifications/规格	
Wingspan/翼展:	1100/1500mm
Length/长度:	950mm
WingArea/翼面积:	17.8/25.7dm ²
Material/材料:	EPO
Recommend Motor/推荐电机:	2212 1400KV
Recommend ESC/推荐电调:	30A 2~4S
Recommend Propeller/推荐螺旋桨:	8040
Servo/舵机:	9g Servo*4PCS
Recommned Battery/推荐电池:	21700 4S1P/3~5000mAH 4s

Installation Diagram/安装图



KIT Contents/装箱单



A: Hatch
舱盖

D: Fuselage
机身

G: Wing
机翼

B: Cam hatch
摄像头舱盖

E: Horizontal tail
平尾

H: Wing Extend
机翼加长件

C: Side hatch
侧门

F: Tail
机尾

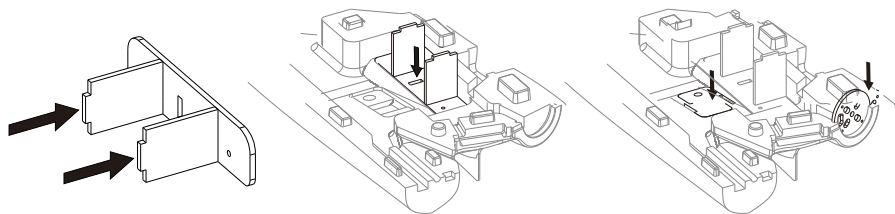
I: Wing tube hatch
机翼碳管盖

Packing List/装箱单

Packing List/装箱单			
Version/版本	KIT LITE	PNP	FPV PNP
Description	Un-assembled Seal KIT (User need glue the plane)	Assembled Seal KIT	Assembled Seal PNP
	Wood Plate	ATOMRC 2212 1400KV MOTOR	FOXEEER Razer NANO 1200TVL
	Ballhead Push Rods	ATOMRC Exceed 30A BLS 2~4S 5V3A BEC ESC	ATOMRC Exceed 1.5W VTX
	Battery Strap	ATOMRC Exceed 9g Servo* 4 8 Inch Prop	5.8G 2dB Antenna

Installation/安装指南

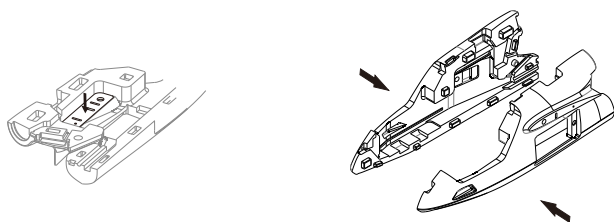
1



Glue the frame, VTX mount and Motor mount.

将机身框架木片和图传固定的木片粘贴到机身上。

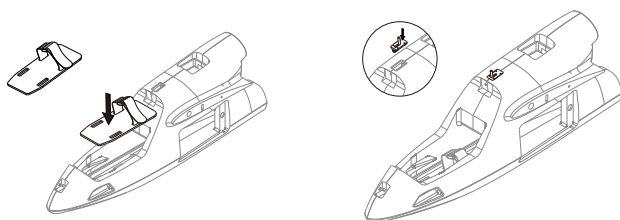
2



Glue the frame to the other side of fuselage, then glue the fuselage.

将框架木片粘贴到另一侧，然后粘贴左右机身。

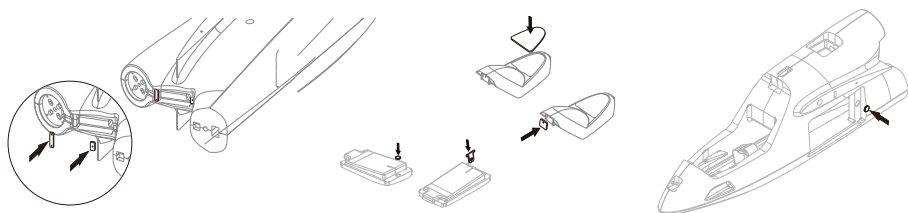
3



Install the battery strap , glue the battery mount board to the fuselage.

安装电池固定木片，安装舱盖扣。

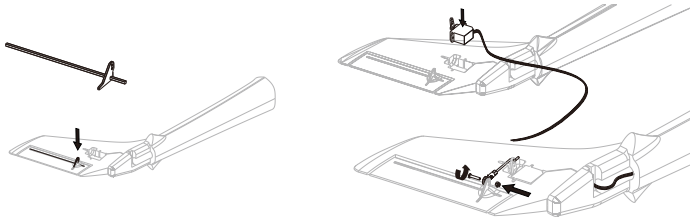
4



Install magnet and hatch lock to the side hatch, ESC mount.

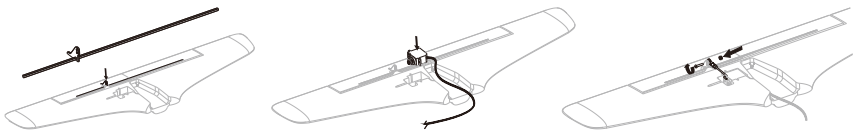
安装磁铁、舱盖木片、舱盖扣，安装电调底座木片。

5



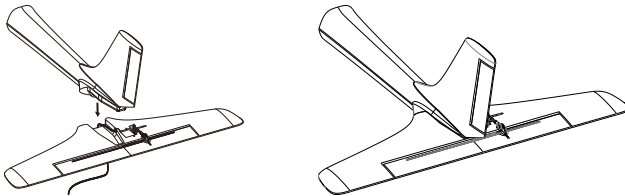
Install the rudder control surface, servo and push rod.
安装方向舵舵角，舵机及拉杆。

6



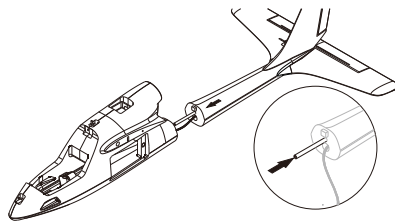
Install the elevator control surface, servo and push rod.
安装方向舵舵角，舵机及拉杆。

7



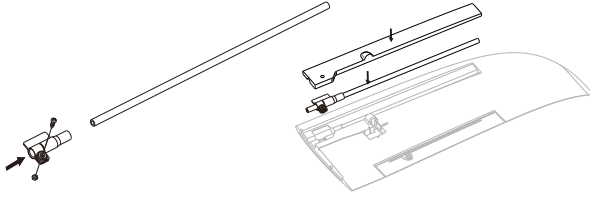
Glue the tail.
粘接平尾。

8



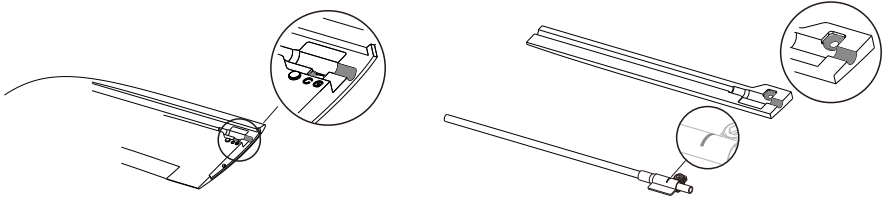
Glue the body, and hatch lock.
粘接机尾，安装舱盖扣。

9※



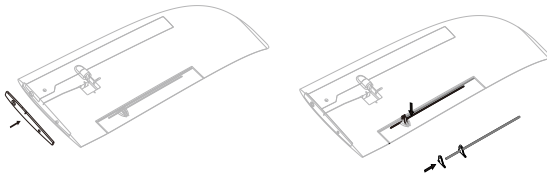
Glue the main carbon tube, tube clip.
粘接机翼碳管，管夹。

10※



Please do not glue the dark part shown above, otherwise the carton tube will to tight to install.
粘接管夹时，请勿在灰色区域粘接胶水，以免胶水溢出导致碳管难以插入。

11



Glue the side plate and control surface reinforcement carbon rod.
粘接机翼侧板，舵面加强片和舵角。

12



Glue the servo, install the push rod.
粘接舵机，安装舵机拉杆。

13



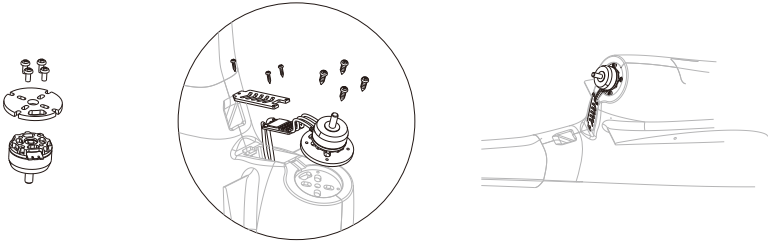
Assemble the wing to the body, tighten the screw to lock the wing.
安装机翼，固定管夹螺丝锁定机翼。

14



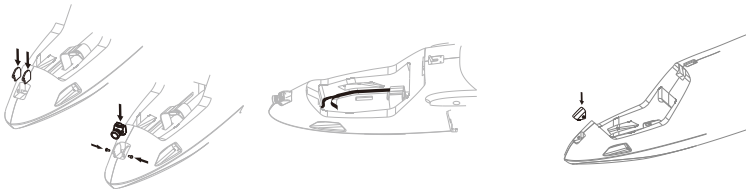
Glue the plastic skid.
粘接机腹防摩片。

15



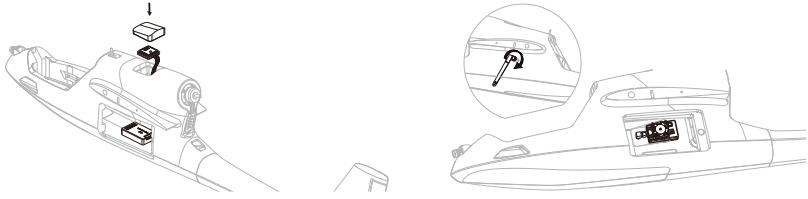
Install the motor and ESC.
安装电机电调。

16



Install the Camera, install the camera cable.
安装摄像头，固定摄像头线。

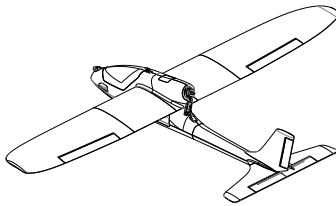
17



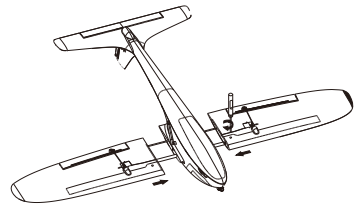
Install the GPS, VTX and Flight Controller.
安装GPS, 图传及飞控。

How to installation 1100mm Wing Span

小翼展模式切换



1500mm



1100mm

10*8mm 

3mm 

600mm





200mm

If user want use 1100wing span, the wing carbon tube need change 200mm.
若用户想使用1100mm翼展, 需将机翼中间碳管切换至200mm.

ESC Information/电调说明

1.The ESC included with the model has a safe start.If the motor battery is connected to the ESC and the throttle stick is not in the low throttle or off position,the motor will not start untill the throttle stick is moved to the low throttle or off position.Once the throttle stick is moved to the low throttle or off position,the motor will emit a series of beeps.the motor is now armed and will start when the throttle is moeved.make sure receiver is bind to the radio, turn on the radio, set throttle stick to the maximum.

2.Power on the ESC(The ESC must connect to the motor and Receiver).

The motor will emit a series of beeps, after the beeps, set the the throttle stick the the minimum, the motor will emit a series beep again. now the ESC calibration is done.

VTX Uermanual/图传说明书

Band	Channel							
	1	2	3	4	5	6	7	8
Band A	5865	5845	5825	5805	5785	5765	5745	5725
Band B	5733	5752	5771	5790	5809	5828	5847	5866
Band E	5705	5685	5665	5645	5885	5905	5925	5945
Airwave/FS	5740	5760	5780	5800	5820	5840	5860	5880
Race Band	5658	5695	5732	5769	5806	5843	5880	5917
L Band	5362	5399	5436	5473	5510	5547	5584	5621

VTX Specs/图传参数

Voltage input/电压输入范围: 2~6S Lipo

Frequency/频率:5.3~5.9Ghz

Power/功率: 200/800/1500mw Switchable

Power consumption/功耗: 9V 1.1A

VTX Setting/图传设置

1. Hold button 3 seconds into setting mode.
 2. In setting mode, short press the button to change band.
 3. Then hold button 3 seconds into CH setting mode, short press button to change CH.
 4. Hold button 3 second to get into Power setting mode, there is short bar on LED, short press to switch power, 1 bar means 200mW, 2 bar means 800mW, 3 bar means 1500mW.
- 1, 长按设置按键三秒, 进入波段设置模式。
 - 2, 在设置模式下, 短按按键切换波段。
 - 3, 再次长按按键三秒钟, 进入频道切换模式, 短按按键切换频道。
 - 4, 再次长按按键三秒钟, 进入切换功率模式, 短按按键切换功率, 数码管一条为200mw, 两条为800mw, 三条为1500mw。

Please make sure antenna is installed before power on, otherwise the VTX will fried!!!

图传发射机通电前务必确认天线已安装妥当, 否则发射线会烧毁。

Please download the latest user manual at
www.atomrc.com/pages/download

