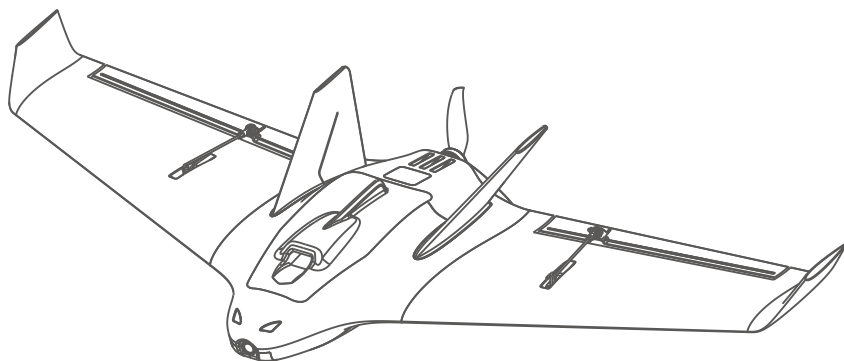




User Manual

Mobula

魔鬼鱼



Introduction/产品简介

The Mobula 650 is compact design FPV delta wing, designed for FPV, the 650mm wingspan and make the wing very swift for low attitude FPV, the EPP material make the wing durable when crashing. With large fuselage, user can easily install the electronics.

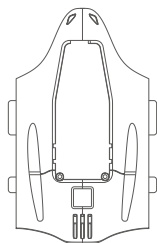
Mobula 650是一款紧凑设计的三角翼，专为FPV所设计，650mm的翼展让低空高速穿越飞行得心应手，EPP的材质耐摔耐炸，大尺寸的机舱安装电子设备方便简洁。

Specifications/参数	
Wingspan/翼展	650mm
Length/长度	300mm
WingArea/翼面积	8dm ²
Material/材质	EPP
Recommend Motor/推荐电机	2004 2700KV
Recommend ESC/推荐电调	30A 2~4S
Recommend Propeller/推荐螺旋桨	4023
Servo/舵机	9g Servo*2Pcs
Recommned Battery/推荐电池	4S 850mAh Lipo

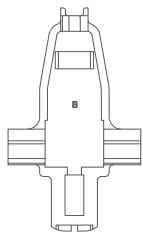
Version Description/版本说明

Packing List/装箱单			
Version/版本	KIT LITE	PNP	FPV
Description	Un-assembled KIT 全散件 (User need glue the plane)	Assembled KIT	PNP version of plane
	Wood Plate 层板	2004 2700KV MOTOR	FOXEEER Razer NANO
	Ballhead Push Rods 拉杆	BLS 30A ESC (Input 2~4S Built in 5V3A BEC)	ATOMRC TX500 VTX
	Battery Strap 电池绑带	9g Servo* 2 4023 Prop	5.8G 2dB Antenna

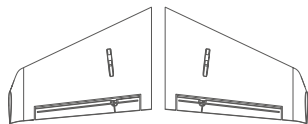
KIT Contents/清单



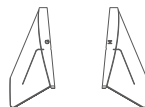
A



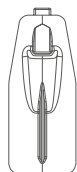
B



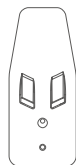
C



D



E



F



G



H

A: Upper Fuselage
机身上盖

B: Bottom Fuselage
机身下盖

C: Wing
机翼

D: V Tail
V尾

E: Hatch
舱盖

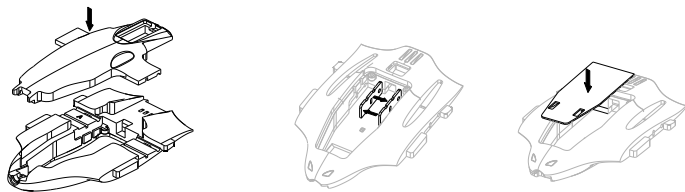
F: GPS Hatch
GPS舱盖

G: Blocker for V Tail
V尾堵块

H: Camera Hatch
摄像头盖

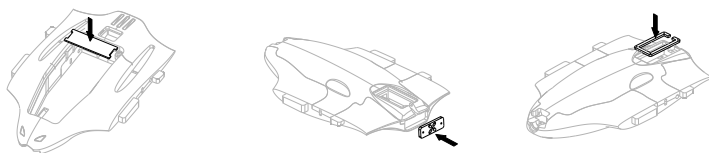
Installation/安装指南

1



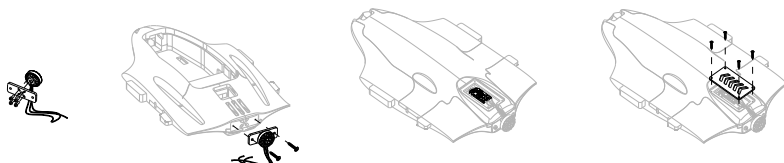
Glue the upper and lower fuselage, then glue the side and bottom plate.
粘接上下机身，然后粘接机仓内部侧板及底板

2



Glue the upper plate in the fuselage, then glue the ESC and Motor mount plate.
用502胶水粘接机舱内部上板，然后粘接电机和电调安装木板

3



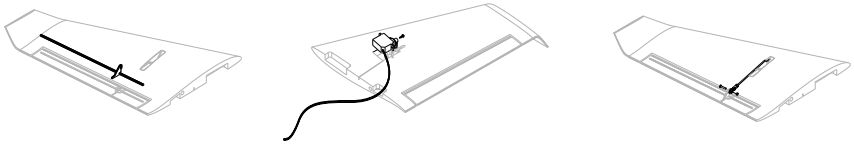
Install the Motor and ESC.
安装电机电调

4



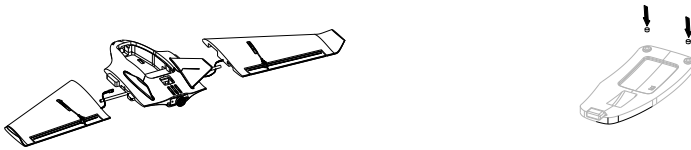
Glue the V tail.
粘接V尾

5



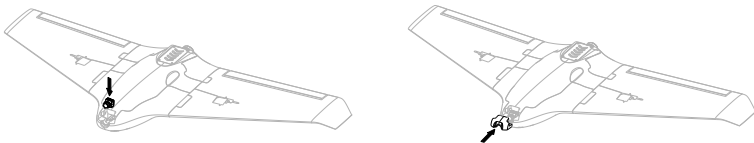
Glue the control horn, then glue the servo, install the push rod.
粘接舵角，然后粘接舵机，安装拉杆

6



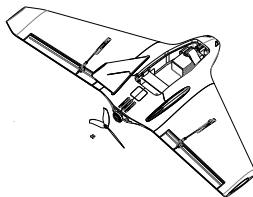
Glue wing , then glue the release hock and magnet on the fuselage cover.
粘接机翼，然后粘接舱盖磁铁和舱盖释放钩

7



Install the camera, then glue the nose.
安装摄像头，然后粘接机头

8



Install the Propeller, battery and receiver.
安装螺旋桨，电池和接收机

Tx500 VTX Uermanual/图传说明书

Band	Channel							
	1	2	3	4	5	6	7	8
Band A	5865	5845	5825	5805	5785	5765	5745	5725
Band B	5733	5752	5771	5790	5809	5828	5847	5866
Band E	5705	5685	5665	5645	5885	5905	5925	5945
Airwave/FS	5740	5760	5780	5800	5820	5840	5860	5880
Race Band	5658	5695	5732	5769	5806	5843	5880	5917
L Band	5362	5399	5436	5473	5510	5547	5584	5621

VTX Specs

Voltage input/电压输入范围: 2~6S Lipo

Frequency/频率: 5.3~5.9Ghz

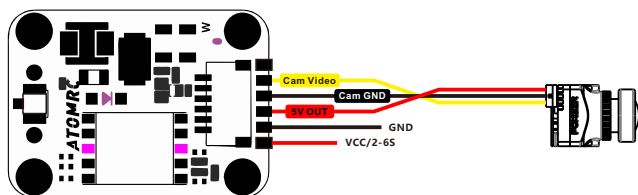
Power/功率: 100/200/500mw Switchable

Power consumption/功耗: 9V 1.1A

VTX Setting

1. Hold button 3 seconds into setting mode. In setting mode, short press the button to change band.
 2. Then hold button 3 seconds into CH setting mode, short press button to change CH.
 3. Hold button 3 second to get into Power setting mode, there is short bar on LED, short press to switch power, 1 bar means 100mW, 2 bar means 200mW, 3 bar means 500mW.
- 1, 长按设置按键三秒, 进入波段设置模式。在设置模式下, 短按按键切换波段。
- 2, 再次长按按键三秒钟, 进入频道切换模式, 短按按键切换频道。
- 3, 再次长按按键三秒钟, 进入切换功率模式, 短按按键切换功率, 数码管一条为100mw, 两条为200mw, 三条为500mw。

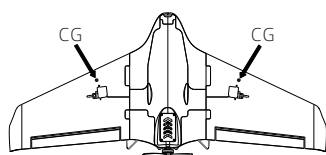
VTX Wiring/图传接线图



Tips/小贴士

This product is not toy, adult supervision is required for those under 14 years old!

此产品并非玩具，14岁一下用户请在成年人指导下飞行。



The CG is very important for mobula. CG is marked on the bottom of wing. Check the CG carefully before flight. 三角翼对重心非常敏感，重心标在机翼下方，起飞前请确定飞机是否平衡。

The wing already have upward design, so no need adjust the elevons upward. 此飞机舵面已有上翘设计，无需微调舵面上翘。



Please download the latest user manual at
文件若有更新，恕不另行通知，请于以下网站下载最新版本
www.atomrc.com/pages/download

