



Wireless Earbuds

USER MANUAL

FUSION GLARE

V1.03

Packing List



x1



x1



S x2



M x2

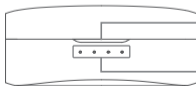


x1

(The ear tips in medium size have been installed on the earbuds in advance.)

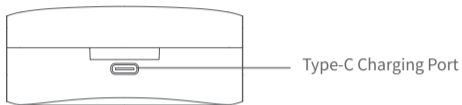
Product Overview

Charging Case

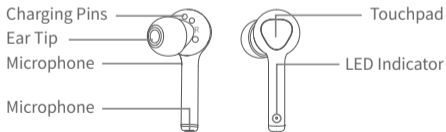


Opening Slot

LED Indicators



Earbuds

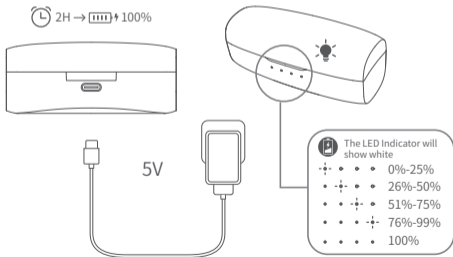


Charge

Fully charge the **Charging Case** and earbuds before your first use.

Charging Case

Connect the **Charging Case** to a compatible adapter (not included) with the **Type-C Cable**, then plug the adapter into a socket.



Earbuds

Step 1:

Remove the stickers from the **Charging Pins** on the earbuds.

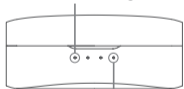
Step 2:

Align the **Charging Pins** on the earbuds with those in the case, then place the earbuds into the case until it magnetically snaps into the **Charging Slot**.

Step 3:

Close the **Charging Case**.

LED Indicator for Right Earbud



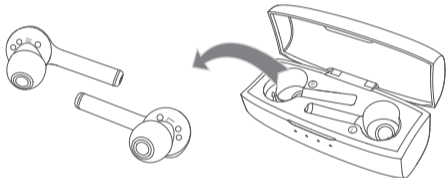
LED Indicator for Left Earbud

- **Charging:** The corresponding LED Indicator(s) for the earbud(s) will be solid blue for 5 seconds and then off repeatedly.
- **Fully Charged:** The corresponding LED Indicator(s) will be off.

Power On

Option 1

Open the **Charging Case** and take the earbuds out to power on.



Option 2

When the earbuds are not in the case and in power-off status, touch and hold the **Touchpad** for 1 second to power on.



Pair

Step 1

When the **LED Indicator** on one earbud flashes red and blue alternately, pair the earbuds with your mobile device within 60 seconds.

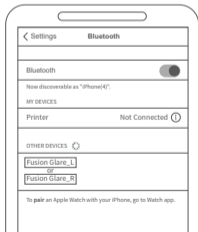
Tip:

When there is no earbud flashing red and blue alternately, place the earbuds back into the case and take them out again.

Step 2

For Android device

① Enable Bluetooth on your device, then search and tap **Fusion Glare_L** or **Fusion Glare_R** from the search results.



- ② A pairing request will pop up, then select **Pair** to pair this earbud with your mobile device. You will hear "Connected" after the successful connection of this earbud.
- ③ Another pairing request will subsequently pop up. Select **Pair** again to pair another earbud with your mobile device.

Tip:

After the successful pairing of earbuds, the **LED Indicators** will flash blue once for every 5 seconds.

For iOS device

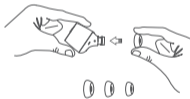
- ① Enable Bluetooth on your device, then search and tap **Fusion Glare_L** or **Fusion Glare_R** from the search results. You will hear "Connected" after the successful connection of this earbud.
- ② A pairing request for another earbud will pop up. Select **Pair** to pair another earbud with your mobile device.

Tips:

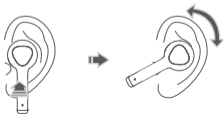
- After the successful pairing of earbuds, the **LED Indicators** will flash blue once for every 5 seconds.
- Please ignore the words of "Not Connected" for another earbud on your device after a successful connection.

Wear the Earbuds

If the ear tips don't fit your ears, you can replace them with the new ones we provided.





Fit the earbuds into your ears.






Functions



Volume

 Volume Up	Tap the Touchpad of the Right(R) Earbud once
 Volume Down	Tap the Touchpad of the Left(L) Earbud once

Music

 Play/Pause	Tap the Touchpad of either earbud twice
 Previous	Touch and hold the Touchpad of the Left(L) Earbud for 1 second
 Next	Touch and hold the Touchpad of the Right(R) Earbud for 1 second

Call

 Accept	Tap the Touchpad of either earbud once
 Decline/End	Touch and hold the Touchpad of either earbud for 2 seconds

Activate Voice Assistant



When you're not listening to music or watching videos, tap the Touchpad of the Right (R) earbud for 3 times to wake up voice assistant.

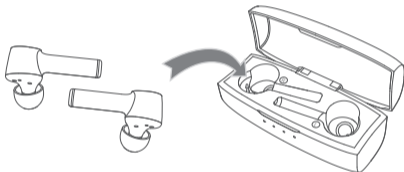
Low Battery Warning

When the battery of the earbud gets low, the LED Indicator will flash red twice every 8 seconds. You will hear a voice prompt of "Battery is low" from the earbud.

Power Off

Option 1

Place the earbuds back into the case to automatically power off.



Option 2

Touch and hold the **Touchpad** for 5 seconds to power off the earbuds.

Option 3

If there is no connection with a Bluetooth device within 3 minutes after powering on, the earbuds will automatically power off.

Reset

When the earbuds can't be paired or can't work normally, place two earbuds into the **Charging Case**, then simultaneously touch and hold the **Touchpad** of two earbuds for 5 seconds until the **LED Indicators** on the earbuds flash blue 3 times, which indicates the earbuds have been reset successfully.

Specification

Power Supply	DC 5V
BT Version	V5.0
Frequency Range	2402~2480MHz
Transmit Power (EIRP)	<8dBm (for CE)
Battery Capacity of the Charging Case	400mAh
Charging Time for the Earbud	1 Hour
Charging Time for the Charging Case	2 Hours
Playtime	Up to 8 Hours (with 50% volume)

ISED Warning

This device complies with Industry Canada licence-exempt RSS standard(s). Operation is subject to the following two conditions:

- (1) this device may not cause interference, and
- (2) this device must accept any interference, including interference that may cause undesired operation of the device.

Le présent appareil est conforme aux CNR d'Industrie Canada applicables aux appareils radio exempts de licence. L'exploitation est autorisée aux deux conditions suivantes:

- (1) l'appareil ne doit pas produire de brouillage, et
- (2) l'utilisateur de l'appareil doit accepter tout brouillage radioélectrique subi, même si le brouillage est susceptible d'en compromettre le fonctionnement.

The device is compliance with RF exposure guidelines, users can obtain Canadian information on RF exposure and compliance.

Le présent appareil est conforme Après examen de ce matériel aux conformité ou aux limites d'intensité de champ RF, les utilisateurs peuvent sur l'exposition aux radiofréquences et la conformité and compliance d'acquérir les informations correspondantes.

IC:24268-FUSION

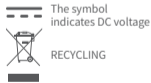
CAUTION

RISK OF EXPLOSION IF BATTERY IS REPLACED BY AN INCORRECT TYPE.

DISPOSE OF USED BATTERIES ACCORDING TO THE INSTRUCTIONS

This product bears the selective sorting symbol for Waste electrical and electronic equipment (WEEE).

This means that this product must be handled pursuant to European directive 2012/19/EU in order to be recycled or dismantled to minimize its impact on the environment.



User has the choice to give his product to a competent recycling organization or to the retailer when he buys a new electrical or electronic equipment.

This product can be used across EU member states.

EU Compliance Statement: Shenzhen VanTop Technology & Innovation Co., Ltd. hereby declares that this device is in compliance with the essential requirements and other relevant provisions of the Directive 2014/53/EU.

A copy of the EU Declaration of Conformity is available online at <https://doc.vantop.com/>

NOTES:



1. High Sound Pressure
2. Hearing Damage Risk
3. Do not listen at high volume levels for long periods.

Manufacturer:

Shenzhen VanTop Technology & Innovation Co., Ltd.

Manufacturer address:

502, 5th Flr. BLDG 4, MinQi Technology Park, No. 65 Lishan Road,
Taoyuan Street, Nanshan District, Shenzhen, China

EC	REP
----	-----

C&E Connection E-Commerce (DE) GmbH

Zum Linnegraben 20, 65933,

Frankfurt am Main, Germany

Info@ce-connection.de

Cystereo Support

North America: support@cystereo.com

United Kingdom: support.uk@cystereo.com



www.cystereo.com



[@cystereo](https://www.instagram.com/cystereo)



[@cystereo](https://www.facebook.com/cystereo)