

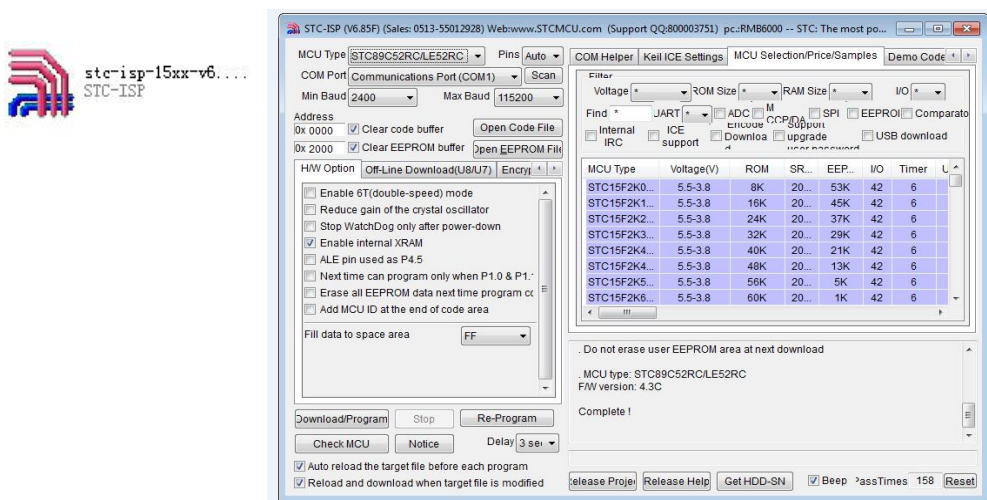
BBS/MAX/ULTRA/ENA:

1.Connect USB reprogram cable to the display connector(male side)

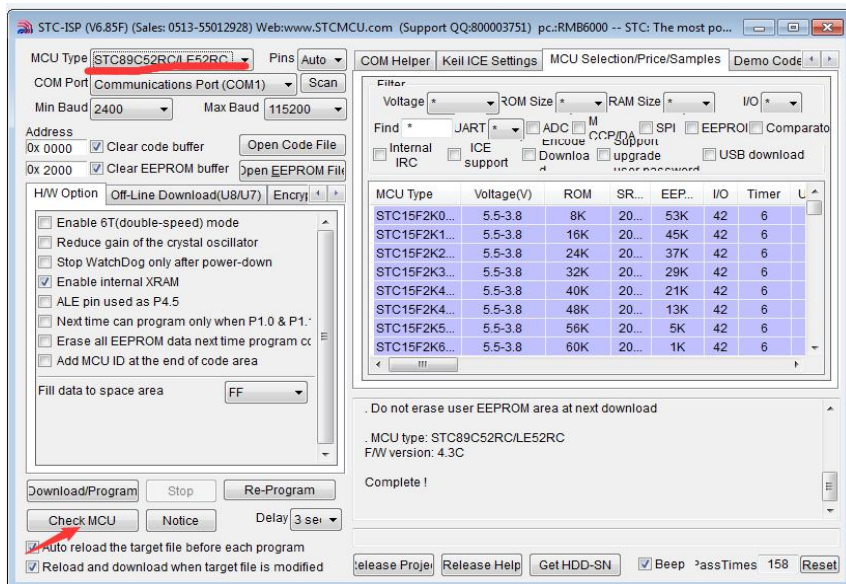


激活 W
转到"电脑"

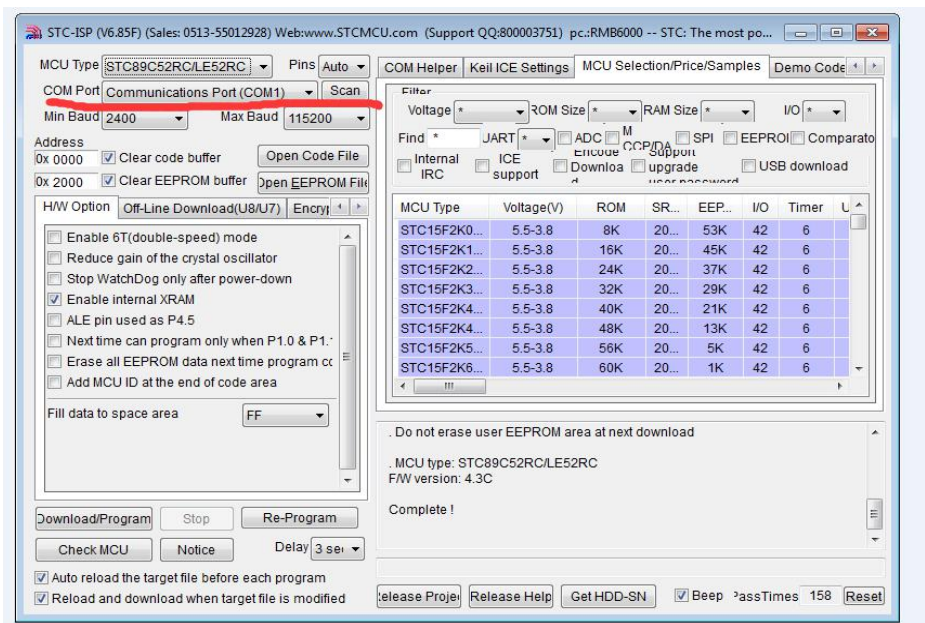
2.Clik STC-ISP-15XX-V68.exe software:



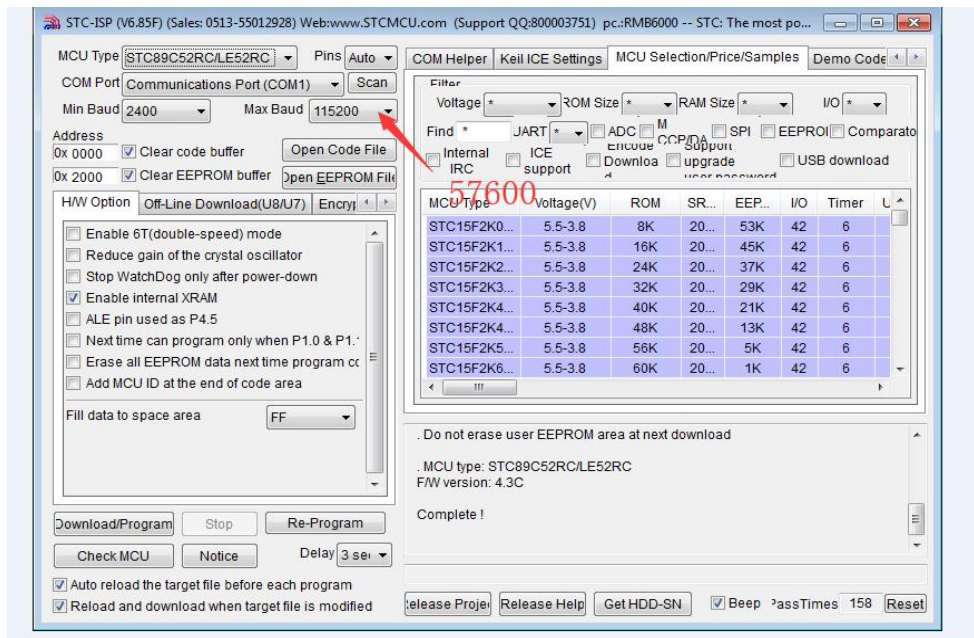
3.Clik Check MCU&Switch on the battery,it will automatically find the correct MCU of the controller.



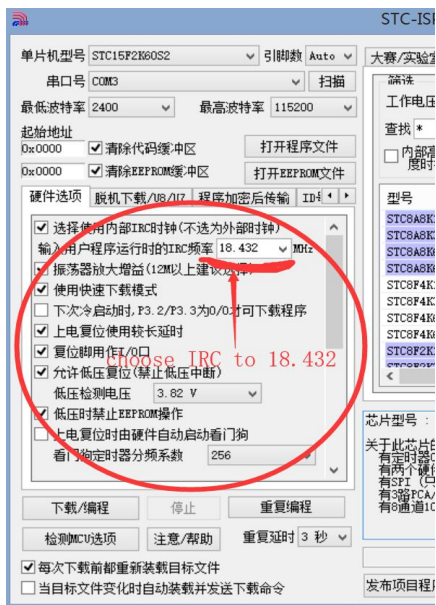
5. Scan and choose the right port



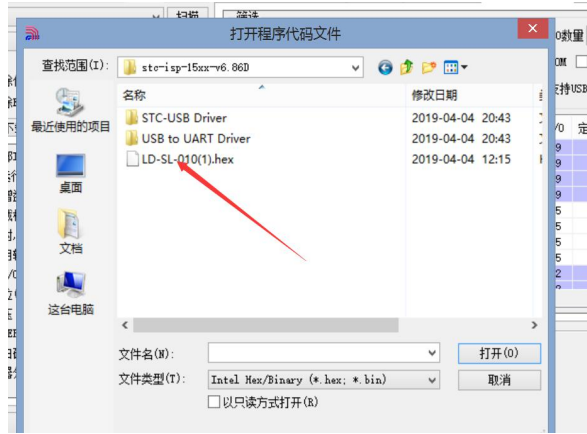
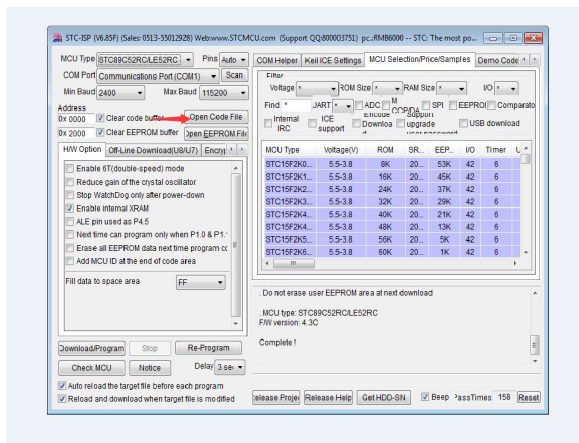
6. Adjust the Max Baud to 57600



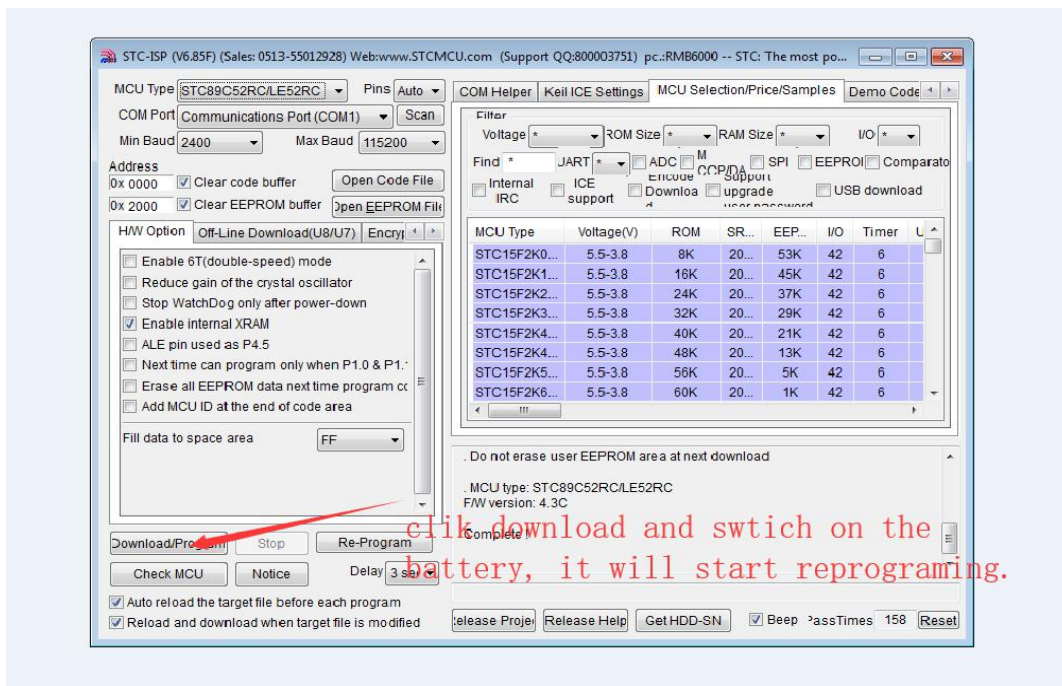
7. Choose IRC to 18.432



7. Open the hex file which we send to you



8. Click Download&Switch ON the battery:You will see the process of the reprogramming to complete!



when everything down, you just need to download the software is ok for other ones.

