



1 Telescoping Top Cover

2 Entrance

3 Medium Honey Super

4 Queen Excluder

5 Deep Brood Box

6 Deep Brood Box

7 Solid Bottom Board

8 Entrance Reducer

STACK THE HIVE PARTS IN THE ABOVE ORDER



Visit Online Store



Assembling Beehive Video

-  @ BeeCastle Beekeeping
-  @ BeeCastle
-  @ BeeCastle
-  <https://www.beecastleltd.com/>



THE UNITED STATES TRUSTWORTHY BRAND

8/10-Frame
3 Layer Beehive Complete Kit

WEBSITE: WWW.BEECASTLELTD.COM

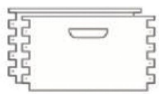


PACKAGE CONTENTS

HIVE BOXES(2 DEEP BOX, 1 MEDIUM BOX):



Box Side Panels x 6



Box End Panels x 6



Screws for Beehive

HIVE FRAMES:(24 frames for 8 DEEP/MEDIUM BOX, 30 frames for 10 DEEP/MEDIUM BOX)



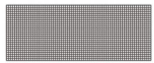
Top Bar With Wedge Comb Guide x 24 or 30



Bottom Bar With Wedge Comb Guide x 24 or 30



End Panels x 48 or 60

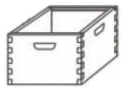


Beeswaxed Plastic Foundation x 24 or 30



Nails for Frames

STACK HIVE:



Hive Box (Assembled by yourself)



Frame with Foundation (Assembled by yourself)



Inner Cover



Bottom Board



Outer Cover



Queen Excluder

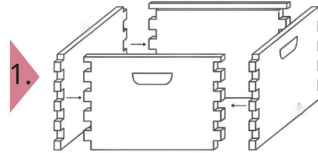


Entrance Reducer

page 1

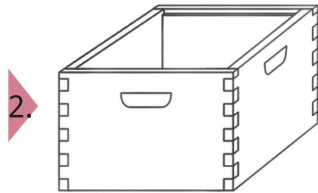
ASSEMBLY STEPS:

HIVE BOX:



1.

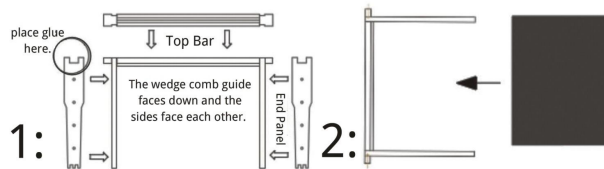
1. Fit the 4 sides together to make a box. Be sure they fit together tightly and the handles are on upper outside of the box.



2.

2. Check to make sure that the corners are at 90 angles as you assemble each other.

HIVE FRAME:



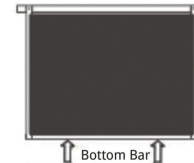
1:

The wedge comb guide faces down and the sides face each other.

2:

page 2

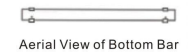
HIVE FRAME(TO BE CONTINUED):



3:

Bottom Bar

View from Bottom

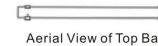


Aerial View of Bottom Bar



Side View of Bottom Bar with 2 long nails nailed down into side panels

4:



Aerial View of Top Bar

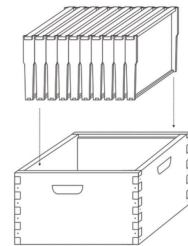


Side View of Top Bar with 2 long nails nailed down into side panels

5:

STACK HIVE:

PLACE THE FRAMES IN THE BOXES. PUSH THE FRAMES TOGETHER IN THE MIDDLE



If You Purchase Product On Amazon, Please Click "Contact Seller". Buy Product From Our Website, Please Contact us via Email: globalbeekeeping123@gmail.com or website: www.beecastleld.com, If you have any question or problem with the product. We will do our best to get your 100% satisfaction.

page 3