

Please visit our online store: www.beecastleltd.com to save more



8-Frame Super Box



10-Frame Super Box



8-Frame deep box



10-Frame deep box



Beehive kit



Nuc Beehive



Beehive(1 Deep,1 Super)



Beehive(2 Deep,1 Super)



Deep Size Frame With Foundation(yellow)



Deep Size Frame With Foundation(black)



Medium Size Frame With Foundation(yellow)



Beekeeping Basic Kit



Beekeeping Pro Kit



Beekeeping Tools Kit



Smoker Pellets



Honey Gate



Visit Online Store



Assembling Beehive Video

-  @ BeeCastle Beekeeping
-  @ BeeCastle
-  @ BeeCastle
-  <https://www.beecastleltd.com/>



THE UNITED STATES TRUSTWORTHY BRAND

8/10 - FRAME SUPER BOX

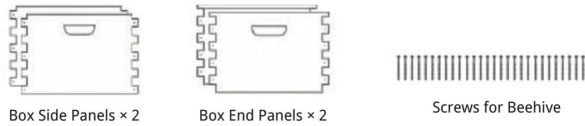
WEBSITE: WWW.BEECASTLELTD.COM



8/10-FRAME SUPER BEE BOX

PACKAGE CONTENTS

HIVE BOX (1 SUPER BOX) :



Box Side Panels × 2

Box End Panels × 2

Screws for Beehive

HIVE FRAMES (8/10 SUPER):



Top Bar With Wedge Comb Guide × 8/10

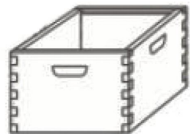
Bottom Bar With Wedge Comb Guide × 8/10

End Panels × 16/20

Beeswaxed Plastic Foundation × 8/10

Nails for Frames

STACK HIVE:



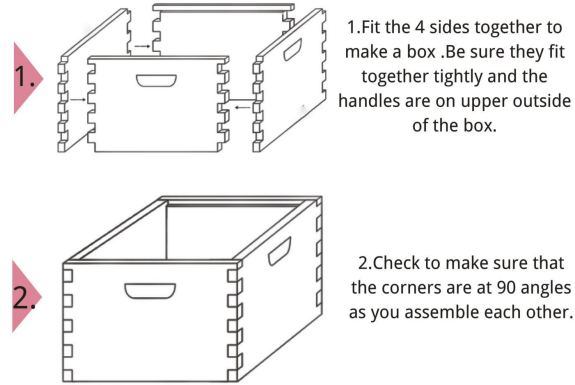
Hive Box (Assembled by yourself)



Frame with Foundation (Assembled by yourself)

ASSEMBLY STEPS:

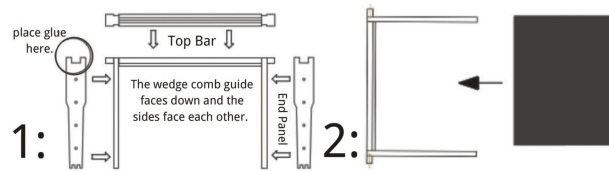
HIVE BOX:



1. Fit the 4 sides together to make a box. Be sure they fit together tightly and the handles are on upper outside of the box.

2. Check to make sure that the corners are at 90 angles as you assemble each other.

HIVE FRAME:



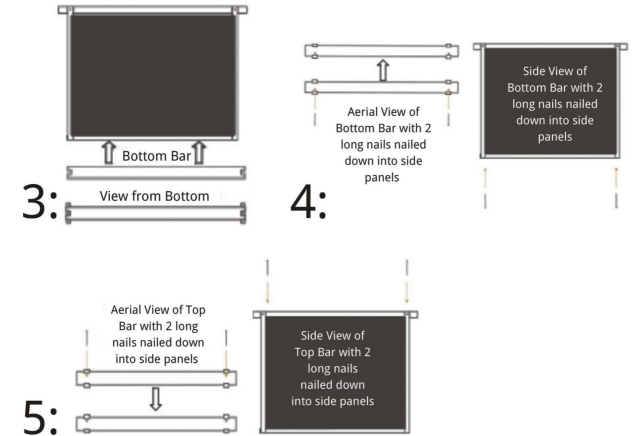
place glue here.

The wedge comb guide faces down and the sides face each other.

1:

2:

HIVE FRAME(TO BE CONTINUED):



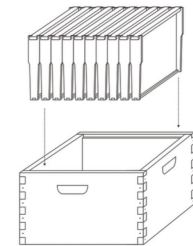
3:

4:

5:

STACK HIVE:

PLACE THE FRAMES IN THE BOXES. PUSH THE FRAMES TOGETHER IN THE MIDDLE



If you have any question or problem with the product, please contact BeeCastle Amazon customer service or website customer service. We will do our best to get your 100% satisfaction.