

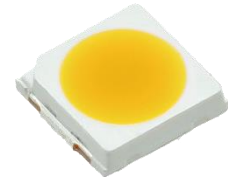


# YJ-BC-3030-G03

Surface Mount Device

## Applications

- High-end architectural lighting
- Photographic/broadcast lighting
- Human-centric lighting
- Photoelectric device and relevant research



## Features

- Industrial highest CRI performance
- 3.0mm × 3.0mm universal package
- Lifespan > 54000 hours (IES LM80)
- TLCI & TM-30 specified
- Exempt Risk Group certified (IEC 62471)
- SimpleBinning solution

## [About Yujileds<sup>®</sup>](#)

Document Number: YJWJ140

Rev Version: 2.0

P3170009.00

## Table of Contents

<b>General description .....</b>	<b>3</b>
<b>Ordering information .....</b>	<b>4</b>
<b>Characteristics .....</b>	<b>5</b>
Electrical-optical characteristics ( $T_A = 25^\circ\text{C}$ , 300mA) .....	5
Absolute maximum ratings ( $T_A = 25^\circ\text{C}$ ) .....	6
<b>Chromaticity group and diagram .....</b>	<b>7</b>
Chromaticity bins & coordinates .....	7
CIE 1931 diagram.....	7
<b>Reliability .....</b>	<b>8</b>
<b>Package material and dimension.....</b>	<b>9</b>
Package layout.....	9
Package materials.....	9
<b>Characteristic graph .....</b>	<b>10</b>
Typical spectral power distribution (normalized).....	10
Forward current.....	11
Vs. forward voltage.....	11
Vs. relative luminous flux.....	11
Vs. relative chromaticity shift .....	12
Vs. absolute chromaticity shift.....	12
Derating based on solder point .....	12
Solder point temperature ( $T_s$ ).....	13
Vs. forward voltage.....	13
Vs. relative chromaticity shift .....	13
Vs. absolute chromaticity shift.....	13
Spatial distribution ( $T_A = 25^\circ\text{C}$ , $I_F = 300\text{ mA}$ ) .....	14
<b>Solder and reflow profile .....</b>	<b>15</b>
Recommended solder pad layout.....	15
Reflow profile.....	15
<b>SMT instruction .....</b>	<b>16</b>
Problems caused by improper selection of collet.....	16

---

Collet selection.....	16
Other notes of caution.....	16
<b>Tape and reel specifications .....</b>	<b>17</b>
<b>Box packaging .....</b>	<b>19</b>
<b>About Yujileds .....</b>	<b>20</b>

## General description

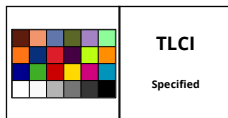
Yujileds® BC series 3030 LED is manufactured with the blue (typical 450nm) die, mixing with Yuji advanced phosphors for specifically designed spectral recipes. This mid-power LED provides industrial highest CRI with full CCT options. It can be used in a variety of applications demanding high color quality and homogeneous lighting distribution.

The BC series 3030 LED also supports the unique service/certification by Yujileds® as described below.



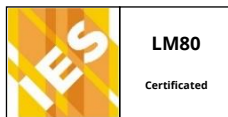
### TM-30-18 specification

The most advanced colorimetric for color rendition, widely recognized as the successor of CRI.



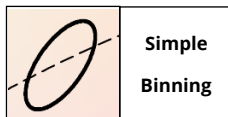
### TLCI specification

Based on the Macbeth ColorChecker, for evaluating the colorimetric quality of the broadcast lighting.



### IESNA LM-80-08 certification

9000 hours data of chromaticity shift and TM-21 reported L70 lifetime at 55°C, 85°C and 105°C.



### SimpleBinning specification

Simplify the chromaticity binning with TrueChroma data support to provide the most economical, simple, and practical solution to customers.

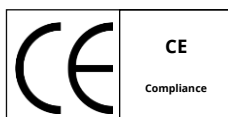


### IEC 62471:2006 certification

Result in the Exempt Group (RG0) for reliable photobiological safety at the rated power.



### RoHS 2011/65/EU compliance



### CE compliance



### REACH compliance (Phosphor)

## Ordering information

PART NUMBER	PRODUCT CODE	CCT	CHROMATICITY BINS	VOLTAGE RANGE
<b>YJ-BC-3030-G03-27</b>	P3170009.27	2700K	27M	0.1V
<b>YJ-BC-3030-G03-32</b>	P3170009.32	3200K	32M	0.1V
<b>YJ-BC-3030-G03-40</b>	P3170009.40	4000K	40M	0.1V
<b>YJ-BC-3030-G03-50</b>	P3170009.50	5000K	50M	0.1V
<b>YJ-BC-3030-G03-56</b>	P3170009.56	5600K	56M	0.1V
<b>YJ-BC-3030-G03-65</b>	P3170009.65	6500K	65M	0.1V
<b>YJ-BC-3030-G03-XX</b>	P3170009.XX	Custom CCT	-	0.1V

## Characteristics

Electrical-optical characteristics ( $T_A = 25^\circ\text{C}$ , 300mA)

PARAMETER	SYMBOL	VALUE			UNIT	TOLERANCE
		MIN.	TYP.	MAX.		
<b>Forward voltage</b>	$V_F$	3.0	-	3.4	V	$\pm 0.05$
<b>Luminous flux</b>	$\Phi_{2700\text{K}}$	73	-	79	lm	-
	$\Phi_{3200\text{K}}$	81	-	87		
	$\Phi_{4000\text{K}}$	90	-	98		
	$\Phi_{5000\text{K}}$	94	-	100		
	$\Phi_{5600\text{K}}$	94	-	100		
	$\Phi_{6500\text{K}}$	96	-	102		
<b>Correlated color temperature<sup>1</sup></b>	$\text{CCT}_{2700\text{K}}$	2550	2700	2850	K	-
	$\text{CCT}_{3200\text{K}}$	3050	3200	3350		
	$\text{CCT}_{4000\text{K}}$	3800	4000	4200		
	$\text{CCT}_{5000\text{K}}$	4700	5000	5300		
	$\text{CCT}_{5600\text{K}}$	5300	5600	5900		
	$\text{CCT}_{6500\text{K}}$	6000	6500	7000		
<b>Color rendering index</b>	$R_a$	95 <sup>2</sup>	-	-	-	$\pm 1$
<b>TCS R9 (CRI red)</b>	$R_9$	-	90	-	-	-
<b>Fidelity index<sup>3</sup></b>	$R_f$	-	92	-	-	-
<b>Gamut index<sup>3</sup></b>	$R_g$	-	100	-	-	-
<b>TLCI 2012<sup>4</sup></b>	-	-	97	-	-	-
<b>Reverse current</b>	$I_r$	-	-	10	$\mu\text{A}$	$\pm 0.1 (V_r = 5\text{V})$
<b>View angle</b>	$2\theta_{1/2}$	-	120	-	Deg	$\pm 5$
<b>Thermal resistance</b>	$R_{\theta\text{JS}}$	-	15	-	$^\circ\text{C/W}$	-

1. Yujileds® promises the chromaticity coordinate tolerance of  $\pm 0.0015$  (CIE 1931 x,y) based on Yuji standard equipment shall prevail.
2.  $R_a$  minimum 93 at 6500K.
3. Defined by the IES TM-30-18 method, this data is for trial.
4. Defined by the EBU, TLCI is the abbreviation of Television Lighting Consistency Index, this data is for trial.
5. This data is for reference only.

## Characteristics

Absolute maximum ratings ( $T_A = 25^\circ\text{C}$ )

PARAMETER	SYMBOL	LIMIT	UNIT
<b>Power Consumption</b>	$P_D$	1350	mW
<b>DC Forward Current (pulsed)<sup>1</sup></b>	$I_{FP}$	600 <sup>2</sup>	mA
<b>DC Forward Current</b>	$I_F$	400	mA
<b>Reverse Voltage</b>	$V_R$	5	V
<b>Junction Temperature</b>	$T_j$	125	°C
<b>Solder Point Temperature<sup>3</sup></b>	$T_s$	105	°C
<b>Operating Temperature</b>	$T_{opr}$	-40 ~ +85	°C
<b>Storage Temperature</b>	$T_{stg}$	-30 ~ +85	°C
<b>Soldering Temperature</b>	$T_{sol}$	260 ± 5	°C
<b>Reflow Cycles Allowed</b>	-	2	-

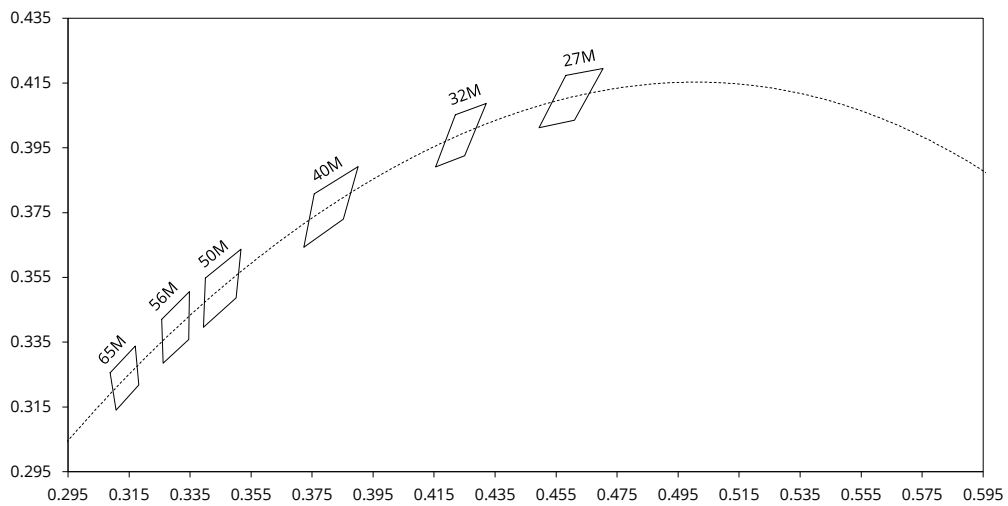
1. Pulse width  $\leq 0.1\text{ms}$ , duty  $\leq 1/10$ .
2. Theoretical data.
3. See page [Package material and dimension](#).

## Chromaticity group and diagram

### Chromaticity bins & coordinates

CCT	BIN	CIE 1931 COORDINATES							
		X0	Y0	X1	Y1	X2	Y2	X3	Y3
<b>2700K</b>	27M	0.4582	0.4174	0.4494	0.4012	0.4610	0.4035	0.4704	0.4195
<b>3200K</b>	32M	0.4220	0.4052	0.4155	0.3891	0.4250	0.3926	0.4321	0.4087
<b>4000K</b>	40M	0.3757	0.3808	0.3723	0.3643	0.3853	0.3730	0.3901	0.3892
<b>5000K</b>	50M	0.3400	0.3548	0.3394	0.3396	0.3501	0.3487	0.3517	0.3637
<b>5600K</b>	56M	0.3257	0.3420	0.3262	0.3285	0.3346	0.3358	0.3348	0.3506
<b>6500K</b>	65M	0.3088	0.3255	0.3108	0.3140	0.3182	0.3218	0.3170	0.3338

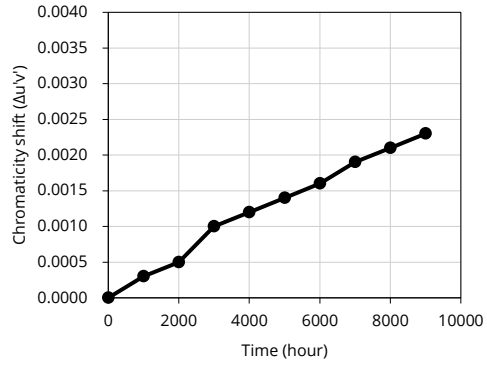
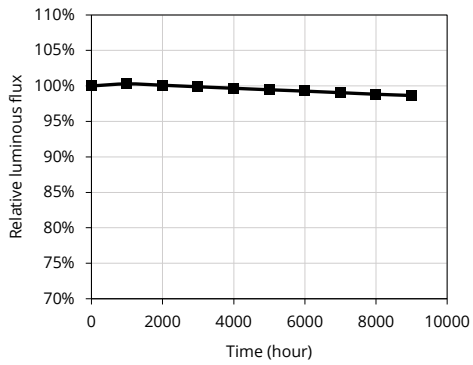
### CIE 1931 diagram



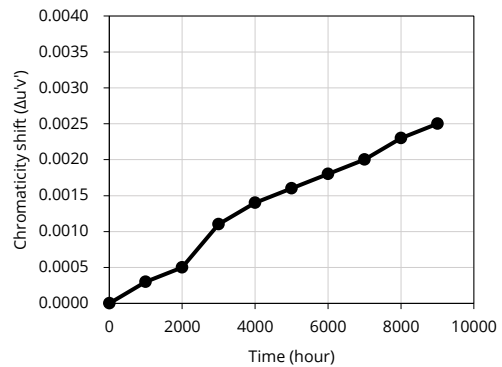
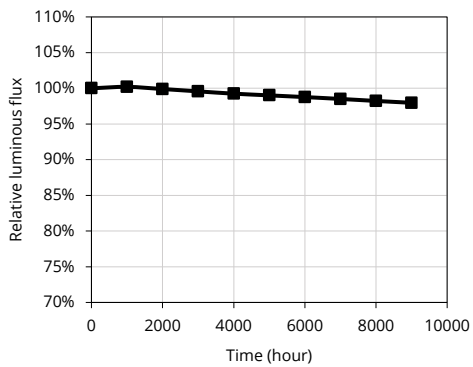


## Reliability<sup>1</sup>

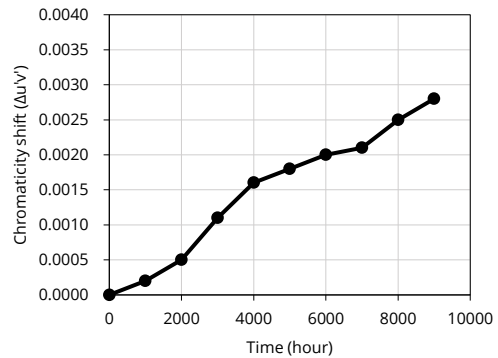
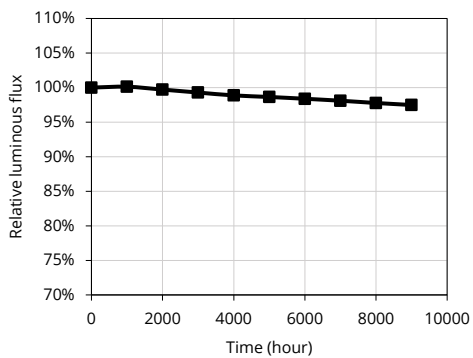
$T_s = 55^\circ\text{C}$ ,  $I_F = 300\text{mA}$ ,  $\text{RH} < 65\%$ , reported L70 > 54000 hours



$T_s = 85^\circ\text{C}$ ,  $I_F = 300\text{mA}$ ,  $\text{RH} < 65\%$ , reported L70 > 54000 hours



$T_s = 105^\circ\text{C}$ ,  $I_F = 300\text{mA}$ ,  $\text{RH} < 65\%$ , reported L70 > 54000 hours

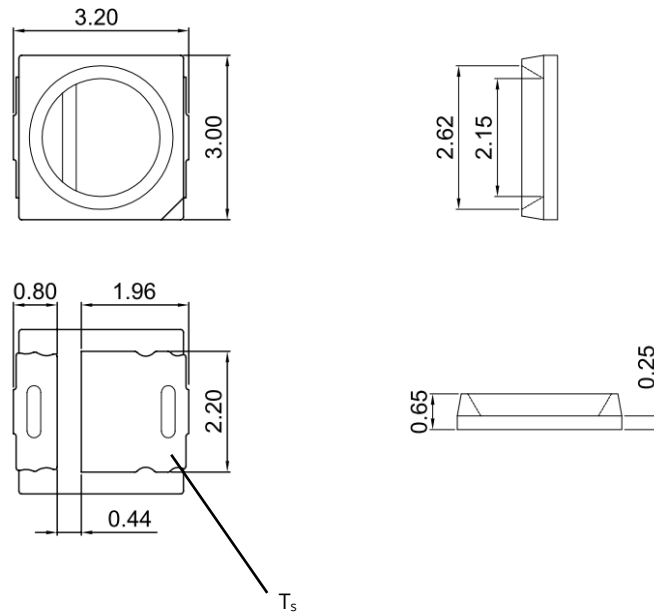


1. Data from IESNA LM-80-2008, report number R2DG160511050-10-M1.
2. Yujileds® reserves all the right for final explanation of reliability.

## Package material and dimension

### Package layout

All dimensions in mm, tolerance unless mentioned is  $\pm 0.1$ mm.



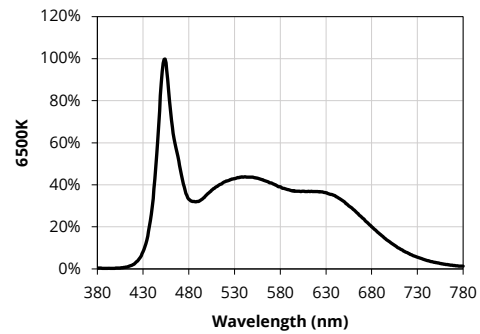
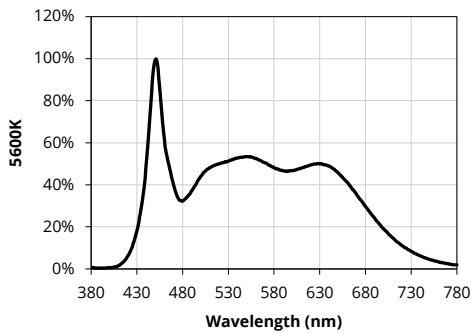
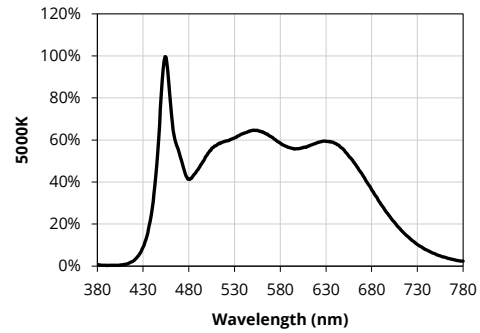
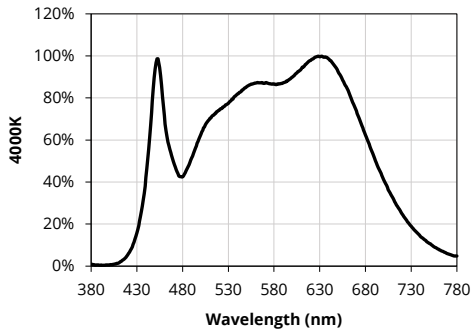
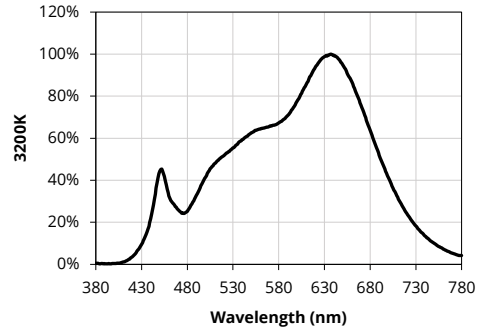
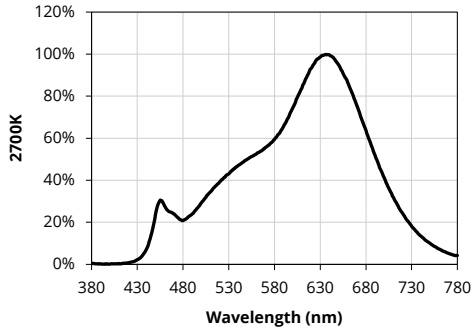
### Package materials

ITEM	DESCRIPTION
Die material	InGaN
Lead frame material	PCT
Encapsulant resin material	Silicon + Phosphor
Electrodes material	Silver-plated copper

## Characteristic graph

Typical spectral power distribution (normalized)

All characteristic curves are for reference only and not guaranteed.



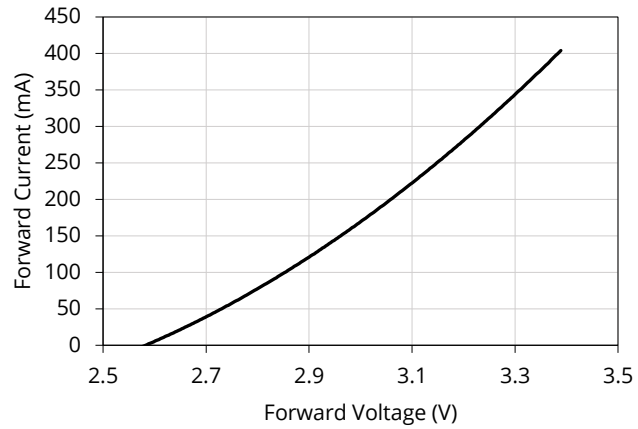
## Characteristic graph

### Forward current

All characteristic curves are for reference only and not guaranteed.

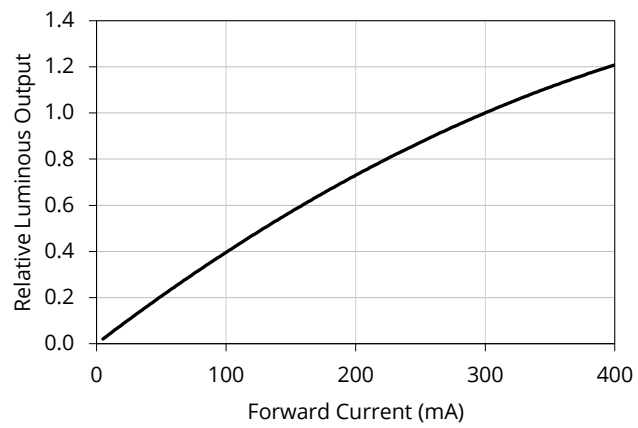
Vs. forward voltage

( $T_A = 25^\circ\text{C}$ )



Vs. relative luminous flux

( $T_A = 25^\circ\text{C}$ )



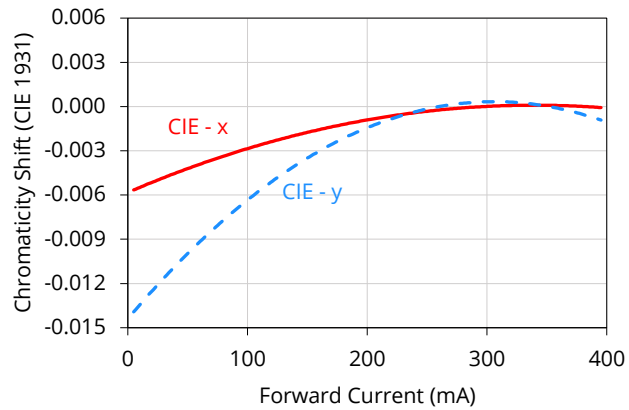
## Characteristic graph

### Forward current (continued)

All characteristic curves are for reference only and not guaranteed.

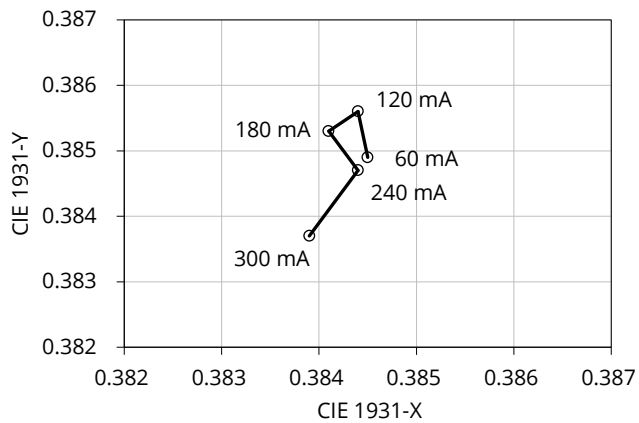
Vs. relative chromaticity shift

(4000K,  $T_A = 25^\circ\text{C}$ )



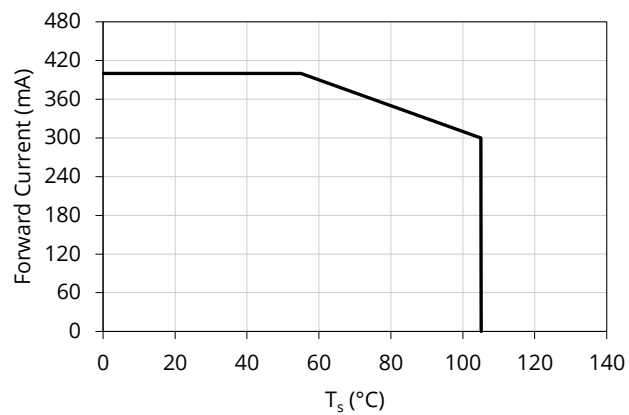
Vs. absolute chromaticity shift

(4000K,  $T_A = 25^\circ\text{C}$ )



Derating based on solder point

Note: De-rating curves are meant for recommendation only and are not meant to provide guarantees of product stability and longevity.



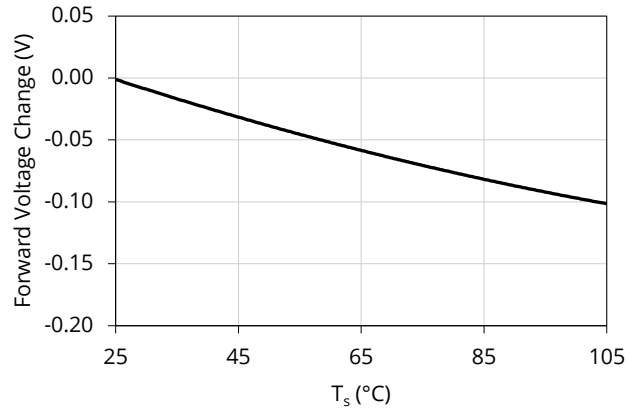
## Characteristic graph

### Solder point temperature ( $T_s$ )

All characteristic curves are for reference only and not guaranteed.

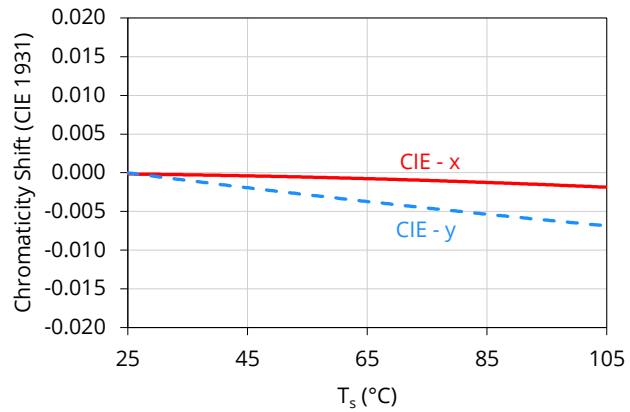
Vs. forward voltage

( $I_F = 300\text{mA}$ )



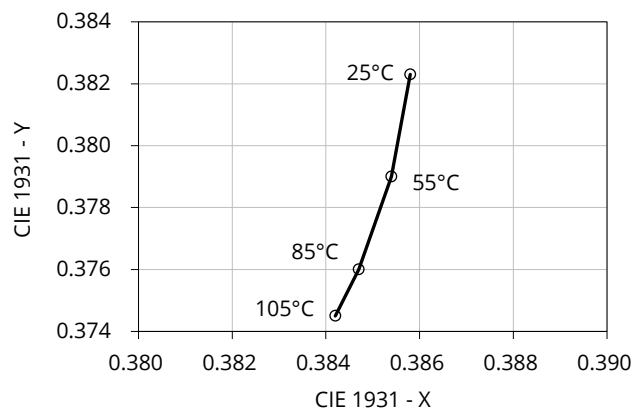
Vs. relative chromaticity shift

(4000K,  $I_F = 300\text{mA}$ )



Vs. absolute chromaticity shift

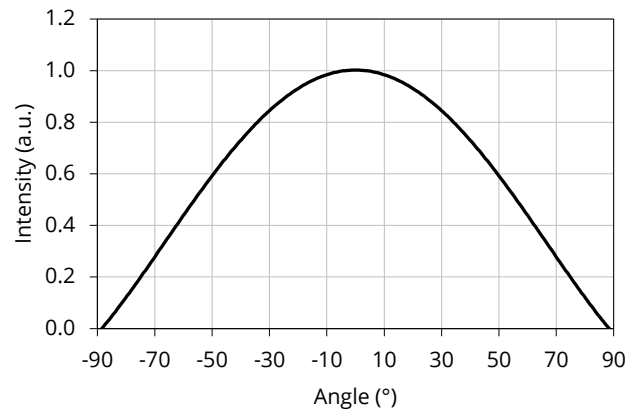
(4000K,  $I_F = 300\text{mA}$ )



## Characteristic graph

Spatial distribution ( $T_A = 25^\circ\text{C}$ ,  $I_F = 300\text{ mA}$ )

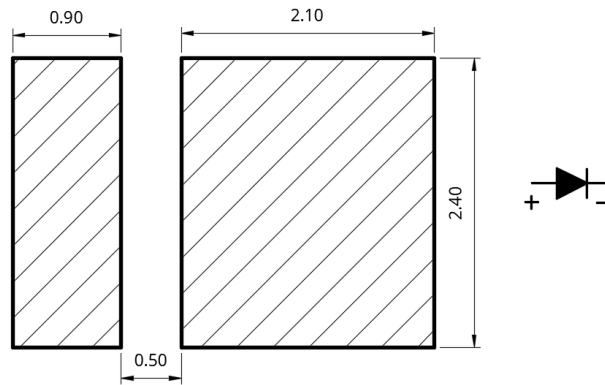
All characteristic curves are for reference only and not guaranteed.



## Solder and reflow profile

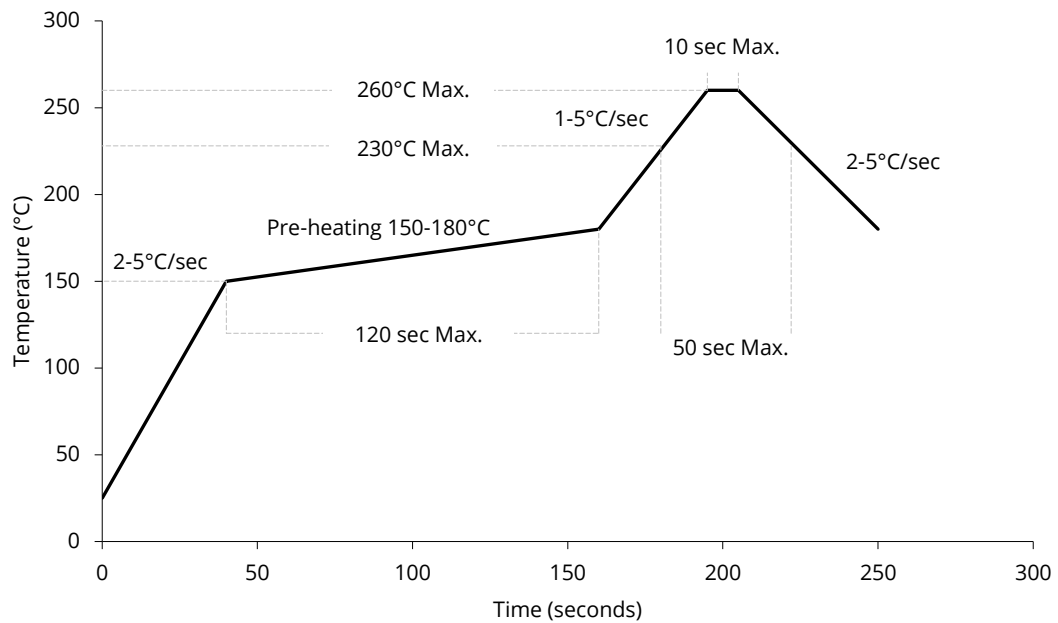
### Recommended solder pad layout

All dimensions in mm, tolerance unless mentioned is  $\pm 0.1$ mm.



### Reflow profile

Soldering ramp-up time (Pb-FREE).



Note: Soldering paste with the melting point at 230°C is recommended.



---

## SMT instruction

### Problems caused by improper selection of collet

Choosing the right collet is important in ensuring product quality after SMT. LEDs are different from other electronic components, as they are not only concerned with electrical output but also optical output. This characteristic makes LEDs more fragile in the process of SMT. If the collet's lowering height is not well set, it will bring damage to the gold wire at the time of collet's pick-and-place process which can cause the LED to not illuminate, flicker or contribute to other quality problems, some of which may not be immediately detectable.

### Collet selection

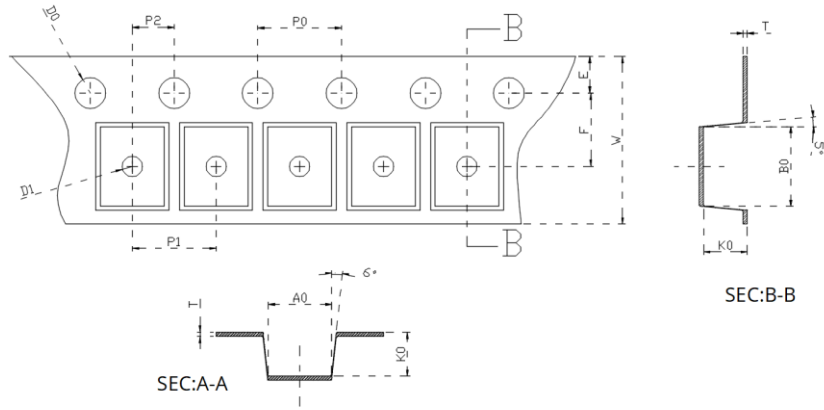
During SMT, please choose the appropriate collet in order to avoid damage the gold wire inside the LED or insufficient suction. Setting the height of the collet is crucial in order to avoid damage to the top view SMD. If the collet setting is set to too low of an altitude, the collet will press down on the SMD, causing damage or breakage to the encapsulant and cause distortion or breakage of the gold wire.

### Other notes of caution

- No pressure should be exerted to the epoxy shell of the SMD under high temperature.
- Do not scratch or wipe the lens since the lens and gold wire inside are rather fragile and cross out easy to break.
- LED should be used as soon as possible when being taken out of the original package, and should be stored in anti-moisture and anti-ESD package.
- This usage and handling instructions are for reference only.

## Tape and reel specifications

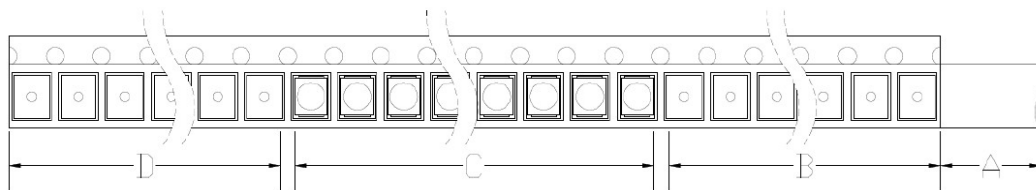
Tape dimensions (unit: mm)



<b>Code</b>	W	T	D1	E	F	D0
<b>Value</b>	8.000	0.180	1.000	1.750	3.500	1.600
<b>Tolerance</b>	±0.100	±0.020	±0.100	±0.100	±0.100	±0.100
<b>Code</b>	P0	P1	P2	A0	B0	K0
<b>Value</b>	4.000	4.000	2.000	3.250	3.400	0.850
<b>Tolerance</b>	±0.100	±0.100	±0.100	±0.100	±0.100	±0.100

## Tape layout

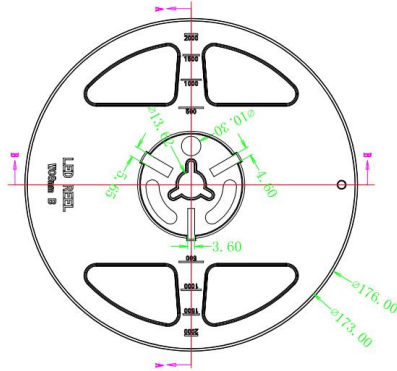
Not drawn to scale.



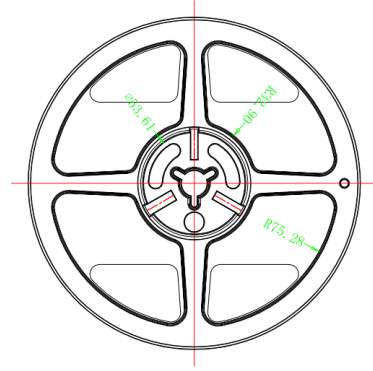
- A: Cover tape, 300mm;
- B: Empty leader, 200mm;
- C: LED, 5000pcs;
- D: Empty trailer, 200mm.

## Tape and reel specifications

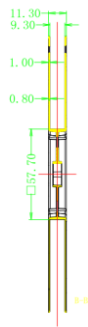
Reel dimensions top (unit: mm)



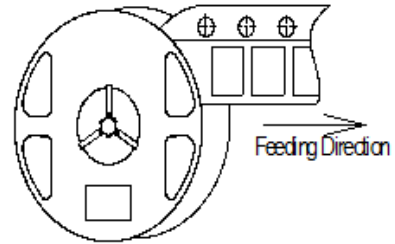
Reel dimensions bottom (unit: mm)



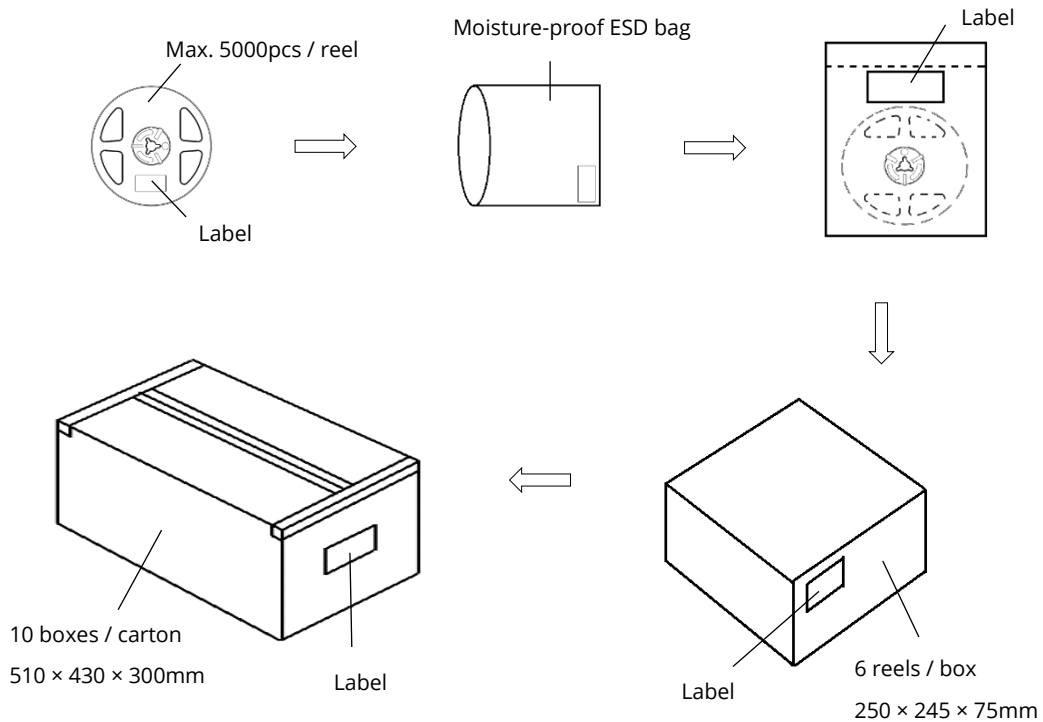
Reel dimensions side (unit: mm)



Feeding direction



## Box packaging



- Reeled products (max 5000pcs / reel) are packed in a moisture-proof bag along with a moisture desiccant pack.
- Each inner box contains up to 6 moisture-proof bag (total maximum number of SMDs is 30000pcs). Box package size: 250 mm × 245 mm × 75 mm.
- Each outer package contains 10 inner boxes. Box size: 510 mm × 430 mm × 300 mm.
- Outer package is sealed with protective bubble wrap and foam. (Part numbers, lot numbers, quantity should appear on the label on the moisture-proof bag, part numbers).
- This packaging merely intended as a reference for standard quantity orders only – please note that actual packaging can differ depending on the order circumstances.

## About Yujileds



### The Yuji story

Yuji started with LED phosphor materials in 2006, and today we are known for nitride red LED phosphor with superior brightness and stability in the world. With the rapid growth in LED industry during the past years, we have serviced over 260 business customers in over 33 different countries or regions, and established subsidiaries or distributors in 6 locations including China, US, UK and Japan, now we are reaching the global markets with the full coverage efficiently.

### Our capabilities and achievements

In Yujileds®, we are a group of people passionate in creating the maximum value for customers. Dedicated to developing LED phosphor, LED light source and final products, we have accumulated unique experience in different projects. Nowadays, over 30 experts are gathered in a variety of areas including but not limited to semiconductor, chemistry, optics, photoelectricity, circuitry, materials and color science.

In commercial markets, we have been dedicating to providing comprehensive solutions for specific applications by deeply understanding these markets. Our goal is not only to offer an LED product simply but is to grow with customers and share the success of a business.

**Main website:** [www.yujiintl.com](http://www.yujiintl.com)

Find the comprehensive introduction of Yuji company and our insights into a variety of advanced technologies and applications.

Contact: [info@yujigroup.com](mailto:info@yujigroup.com)

**Subordinative website:** [www.yujileds.com](http://www.yujileds.com)

Find more about our products, technical posts, featured support and service, blogs, news and whatever interesting and practical information.

Contact: [contact@yujileds.com](mailto:contact@yujileds.com)

**Online shop:** [store.yujiintl.com](http://store.yujiintl.com)

Find your favorite Yujileds® products with outstanding quality, fast shipment and superb sale service.

Contact: [webstore@yujigroup.com](mailto:webstore@yujigroup.com)