

Space Heater

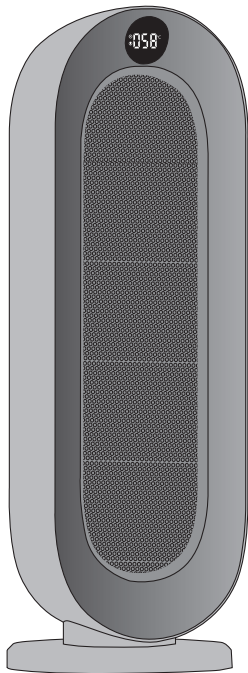
User Manual




Model: S720

Household Use Only

Use Only in Japan



Questions or Concerns?

Dreamegg support provides friendly services in 24 hours. Please contact us Mon–Sat at  supportjp@mydreamegg.com if you need any help.

PROTECT YOUR WARRANTY

Thank you for your purchase! Your unit comes with 18 months warranty (one year and an additional 6 months by registering on our website – no cost to you!) and 60 days money back guarantee.

Activate Your Warranty

To activate your warranty and register your new Dreamegg heater, please email directly to **supportjp@mydreamegg.com** with following information.

Your Name: _____

Amazon Order ID: _____

We will get back with a confirmation email in 24 hours.

※The warranty is valid only in Japan.

SAFETY INSTRUCTIONS

Read these instructions carefully before using appliance and retain them for future use.



WARNING: Failure to comply with the warnings listed below may result in fire, electric shock or serious injury.

- **Always plug the device directly into wall outlet/receptacle. Never use with an extension cord or plug into a circuit that has connected other devices.**
- Keep the cord out of heavy traffic areas. To avoid fire hazard, NEVER put the cord under rugs, carpeting or similar coverings, or near radiators, stoves.

- This device has a polarized plug (one blade is wider than the other). To reduce the risk of electric shock, this plug is intended to fit in a polarized outlet only one way. If the plug does not fit in the outlet, reverse the plug. If it still does not fit, contact a qualified electrician. Do not attempt to defeat this safety feature.
- KEEP plug fits securely into the wall outlet. Do not operate the heater with a damaged cord or plug (cause of electric shock, short circuit, or fire).
- Never leave children unattended when the heater is on or plugged in.
- Always turn it OFF before removing the plug from the outlet.
- Always unplug the heater before moving, cleaning it, or whenever not in use, be sure to unplug it by pulling on the plug and not the cord.
- Use the product only as described in this manual. Do not use outdoor.
- Do not insert or remove the power plug with wet hands.
- Do not touch the hot surfaces during or after use.
- To protect against electrical hazards, DO NOT immerse in water or other liquids, and do not use near water.
- Do not use it in wet location or in areas with gasoline, paint or flammable liquids to avoid electric shocker or burn out the machine.
- Always place the heater on a stable, flat, level surface when operating. Do not place on soft surface like bed or sofa.
- NEVER drop or insert any object into the openings. NEVER block the air intake or exhaust.
- Do not attempt to disassemble, repair or adjust the appliance. Do not use Heater outdoors.
- For any abnormality or malfunction, immediately discontinue use, unplug and contact supportjp@mydreamegg.com for assistance.

INSTALLATION

Keep combustible materials such as furniture, bedding, paper and curtains at least 3 feet (0.9 m) from the front of the heater and keep them away from the sides and rear.

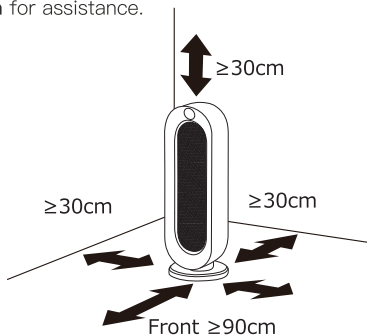


TABLE OF CONTENT

Safety Instructions	1
Specifications	3
Package Contents	3
Know Your Heater	3
Using Your Heater	4
Battery Replacement.....	5
Safety Protection	6
Maintenance & Storage	6
Customer Service	7
Troubleshooting	8

SPECIFICATIONS

Power: 1200W(JP)

Input: AC100-110V 50/60Hz(JP)

Size: 13.8x13.9x42.0 cm

Cord Length: 1.5m

PACKAGE CONTENTS

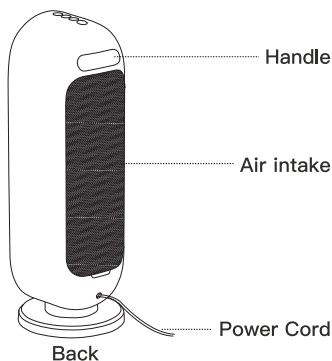
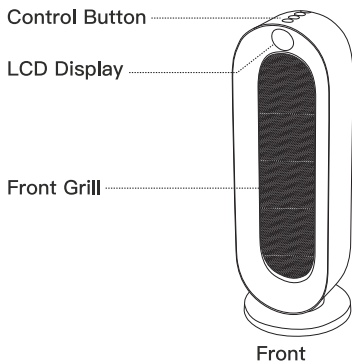
1 x Space Heater

1 x Remote Control

1 x Coin Cell Battery

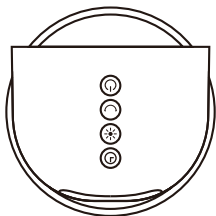
1 x User Manual

KNOW YOUR PRODUCT



USING YOUR HEATER

Place the heater on a firm, level surface and plug the unit directly into a 100–110 V AC outlet. When powered on, the Heater will be at high heat setting and the timer is set to 6 hours.



LCD Display

- Show the room temperature.



Power On/Off

- Short press to turn on/off.



Oscillation

- Short press to turn on/off 90° oscillating.



Heat Setting

- Short press to change the setting between 1, 2, 3, 4.
1: Fan only (6W)
2: Low heat (750W)
3: High heat (1200W)
4: Constant temperature mode

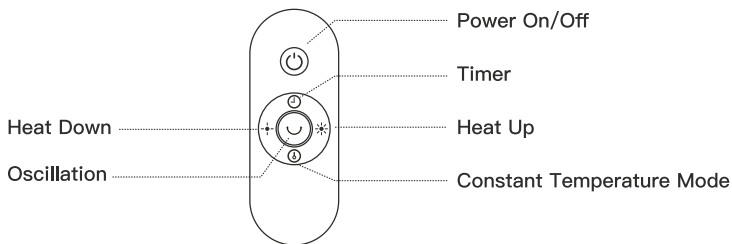


Timer

- Short press repeatedly to select a timer from 1, 2, 3, 6 hours.
- To cancel the timer/run continuously, press and hold the button for 3 seconds till the timer LCD indicator goes off. (The timer can only be canceled by long-pressing the timer button on the device, remote control cannot cancel it.)

Remote Control

- The operation is the same as the button control.
- Install a new coin cell battery (CR2050 3V) before use.



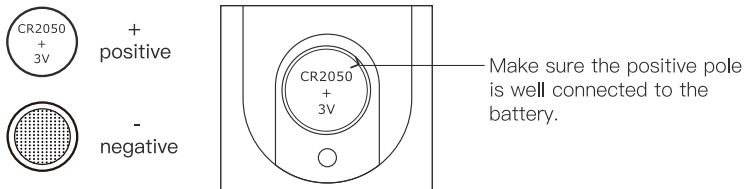
Constant Temperature Mode

- A mode that always keeps the room temperature at 71.6°F(22°C)–80.6°F(27°C), which people feel comfortable with.
- When the temperature reaches 80.6°F(27°C), the device will stop heating and deliver cool air for 30 seconds, when the temperature drops to 77°F(25°C), it will start heating again.

Remote Control Battery Replacement

1. Remove the screws with a screwdriver, and then remove the battery cover.
2. Insert a new II battery (CR2050 3V) in the correct orientation.
3. Replace the battery cover and attach the screws.

Check “+” and “-” when installing the battery, make sure it is in the correct polarity.



Please Note

- * If the battery needs to be changed, replace it with a new battery of the same type.
- * If you do not use the remote control for a long time, remove the battery.
- * Do not disassemble the battery.
- * Do not dispose of battery in fire, battery may explode or leak.

SAFETY PROTECTION

Overheat Protection

When the heater's internal components reach 27°C that could cause overheating and possible fire, the heater will automatically stop heating and blow cool air to cool down. It will restart when the temperature drops to 25°C.

Tip Over Protection

Equipped with a tip-over detection sensor. Once the heater is tipped over or lifted, the internal switch will automatically shut the heater off and the fan will blow cool air for 30 seconds to cool down the heating part. Once the heater is restored to an upright position, it will start working again.

Product Protection

The heater will continually blow cool air for 30 seconds to make it cool down after turning off the device. So it is normal when you find that the heater is still blowing air even turned off the device.

MAINTENANCE & STORAGE

Maintenance



WARNING: Always turn power off first before leaving, moving or cleaning, then unplug the unit and let it cool completely.

Air Intake Cover (frequency: once a month)

Use a vacuum cleaner to remove dust.

- * There is an filter in the intake cover. Be careful not to damage the filter.

Heater (frequency: once every 3 months)

Clean the heater with a soft, damp cloth. You may use a mild detergent if necessary. After cleaning, dry the unit with a soft cloth.



- * Do Not let the liquid enter the heater.
- * Do Not use alcohol, gasoline, or rough brushes to clean the heater.
- * Do Not immerse the heater in the water.
- * Wait until the device is completely dry before use.

Storage

Store the heater in a cool, dry location when not in use. To prevent dust and dirt build-up, use a box or plastic bag to repack the unit.

WARRANTY INFORMATION

Defective Products & Returns

1. Would love a replacement for defective products?

Should your product is defective within the specified warranty period, please contact us via supportjp@mydreamegg.com with order number. Once our customer support team hear from you, we will process your request in 24 hours.

2. Not happy with the unit or passed Amazon 30 days return window?

No worries! Be sure to contact Dreamegg customer service at supportjp@mydreamegg.com with your order number. we will process your request faster and easier, usually in 24 hours.

CUSTOMER SERVICE

 supportjp@mydreamegg.com

Need help? Contact us directly at supportjp@mydreamegg.com with your order ID. We are more than happy to serve you in 24 hours.

Dreameggsupport is here to make sure you are completely satisfied with your product.

TROUBLE SHOOTING

If you are unable to solve the problem with the information below or If your problem is not listed, email us at **supportjp@mydreamegg.com** for assistance.

Problems	Solutions
The heater doesn't turn on	Make sure the power cord is plugged into outlet properly.
	Plug into a different outlet to see if works, or test the outlet with another appliance.
It still blows air even turned off.	The heater will continually blow cool air for 30 seconds to make it cool down after turning off the device, it is normal. As long as the LCD indicator is off, it means the product has been turned off successfully.
Suddenly shuts off	Check if you have set a timer, cancel it. (See P4)
	The overheat protection function is activated. Turn off the device and unplug it, wait for it to cool down then plug in again.
There is air out, but it is not warm air	The heater is set to "Level 1: fan only". Change it to a higher level.
	The overheat prevention function is activated. Wait for the temperature to drop and the heater will heating again.
It smells	It may smell the first time use. It is normal and the smell will gradually disappear with usage.
	The air intake cover and filter are dirty. Clean them. (See P6)
Doesn't get warm	The room you are using is too large.
	Close the door and windows to improve heating efficiency.



IF NONE OF THE ABOVE SOLVES THE PROBLEM, CONTACT A QUALIFIED TECHNICIAN. DO NOT TRY TO ADJUST OR REPAIR THE HEATER/FAN YOURSELF.