



D3 Pro Portable White Noise Sound Machine

User's Manual



Model No.: HFD-W04

Questions or Answers?

Dreamegg Brand Official Support provides timely and friendly services in 24 hours for any problems.

supportjp@mydreamegg.com

PROTECT YOUR WARRANTY

Dreamegg Sound Machine comes with 365 days replacement warranty and 60 days money back guarantee, which starts from the purchase date of the order.

Additional 6-Month Warranty

To extend your warranty 6 months more and register your new Dreamegg, please email directly to supportjp@mydreamegg.com with following information.

Your Name _____

Amazon Order ID _____

Please complete your registration warranty as above. We will get back with a confirmation email in 24 hours.



SAFETY INFORMATION

IMPORTANT:

Please read and comply with all of the instructions and warnings provided in this manual before using the product. Failure to comply with the instructions and warnings provided herein may result in inaccurate results and/or damage to the product itself.

1. Avoid placing the unit in rain or humid place, keep it dry.
2. Avoid dropping objects or spilling liquids onto the unit.
3. The unit should be situated away from fire, like candles or the others.
4. Do not put any stuff on this product.
5. Put the unit away from heat source, dust or vibration.
6. Put the unit on horizontal table.
7. Do not press too hard when pressing the button.
8. Use provided power cord for the sake of safety.
9. The unit should be cleaned regularly with a soft, dry cloth.

Do not use any liquids or sprays (including solvents, chemicals or alcohol) or abrasives to clean.

SAVE THESE INSTRUCTIONS

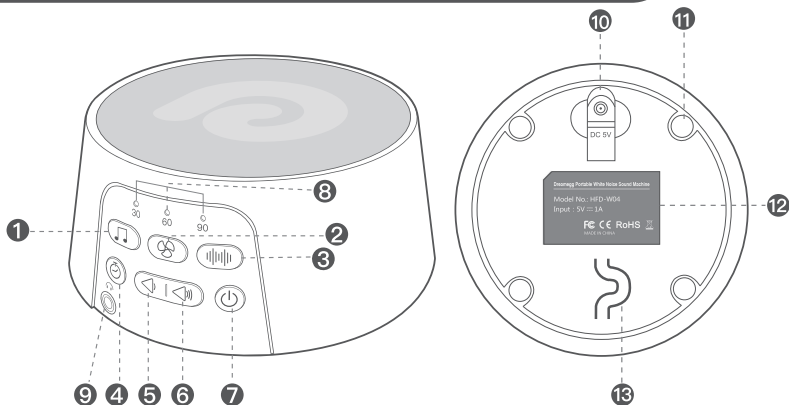
PACKAGE CONTENTS

- 1 X Dreamegg Sound Machine
- 1 X Charging Cable
- 1 X Owner's Manual

TECHNICAL INFORMATION

Product Size	4.4 x 4.4 x 2.3 inches
Net Weight	0.68 lb
Power Adapter Requirement	5V/1.0A
Speaker Specification	66mm, 2Ω 5W
Frequency Response	65Hz–20 KHz
THD	≤0.5%
SNR	≥75 dB
Battery	18500, 3.7V/1200mAh

GETTING TO KNOW YOUR DREAMEGG



① Nature Sound

② Fan Sound

③ White Noise

④ Timer

⑤ Volume Down

⑥ Volume Up

⑦ Power

⑧ Timer Indicator

⑨ Headphone Jack

⑩ AC Adaptor Jack

⑪ Anti-slip Pads

⑫ Built-in Battery

⑬ Cable Slot

GETTING STARTED

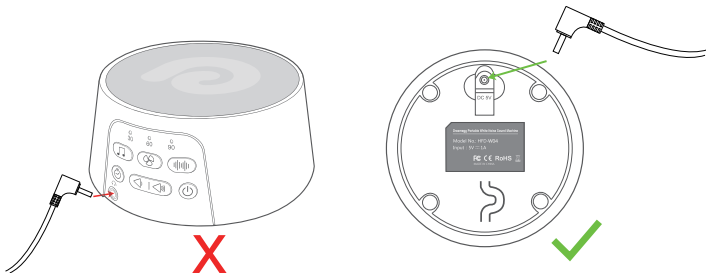
Power On

1. This unit is powered by built-in rechargeable battery or qualified power adapter.
2. Long press power button for 3 seconds to turn on/off the unit.
3. By default, you will hear bird sound at medium volume, and the timer is set to 60 minutes.
The corresponding timer led lights up.

Note: By default, the unit is fully charged. It might end in low battery due to transportation and storage. Refer to below to get your device charged when necessary.

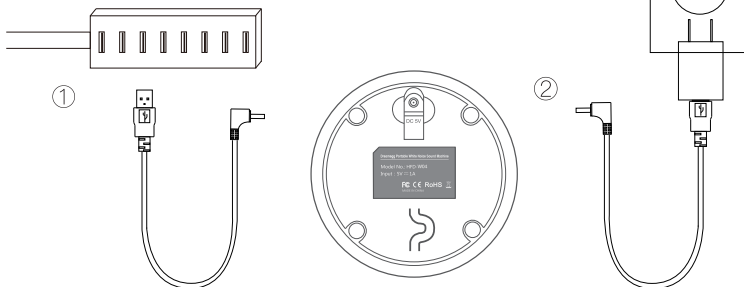
Charge Your Dreamegg

1. Insert the provided charging cable to “DC 5V” port on the bottom of the unit.
Please insert the charging cable all the way to make sure well connection.



Note: Make sure to insert the cord to “DC 5V” port on the bottom of the unit. Don't insert it to the “Headphone” port in the front.

2. ① Connect the provided charging cable to any USB outlet to charge.
② Alternatively, use any 5V/1A power adapter available for wall charging.



3. The power button will turn red when plug in for charging, and it will turn green once it is fully charged. It generally takes around 2 hours to get it fully charged.

Note: When the unit is in plug-in and playing mode, unplugging the cord will turn off the unit. Press power button to restart the unit.

Over-voltage Protection

When DC power supply is over 5V, over-voltage protection will automatically turn the machine off to protect it from burn-out. Please use provided charging cable or qualified 5V/1.0A charger for safety and proper use.

USING YOUR DREAMEGG

Pick a Sound



15 Nature Sounds: Short press this button to choose a nature sound. In sequence they are bird, sea wave, gentle surf, lullaby, music box, rain, thunder rain, brook, campfire, cricket, drip, pendulum, train, shushing, and fetal tone sounds. You will hear an indicator sound when you press the button 15 times.



7 Fan Sounds: Press this button to choose fan sound. You will hear an indicator sound when you press the button 7 times.



7 White Noises: Press this button to choose white noise. In sequence they are 3 pink noises, 3 white noises and 1 brown noise. You will hear an indicator sound when you press the button 7 times.



Set a Timer

Toggle through the TIMER button until the corresponding LED illuminates next to the time of your choice 30, 60 or 90 minutes. The unit will automatically shut off after the selected time. If you want to restart, press Power button again.

Run Continuously

The unit could run continuously if you don't set the timer. Toggle through TIMER button until the corresponding LED goes off, it means you are in continuous mode.

Volume Adjustment



Volume Up: Short press or long press to turn up the volume and you will hear a "ding" sound when volume reaches it's maximum.



Volume Down: Short press or long press to turn down the volume until it's mute.

Headphone Jack

Insert a headphone to enjoy your sounds on the high fidelity speaker without disturbing others.

Memory Function

It will remember the lasting setting of sound, volume and timer, so you don't bother to push buttons all the time!

Low Battery Warning

The power button will be blinking red when the battery is low. It becomes solid red while charging, and turns green once it is fully charged.

TROUBLESHOOTING

Problem	Possible Cause	Solution
Sound machine doesn't power on	Unit is running out of battery	Use the provided cable to charge your unit. See Charge Your Dreamegg (page 5–6)
	Power button has not been pressed	Hold and long press power button for 3 seconds
	Over-voltage occurs or fast charging cable is used	Use the provided cable only. See Over-voltage Protection (page 6)
	Sound machine is defective or malfunctioning	Immediately discontinue use and contact Customer Service (page 10)
Sound machine doesn't respond to button controls	Unit is running out of battery	Use the provided cable to charge your unit. See Charge Your Dreamegg (page 5–6)
	Sound machine is defective or malfunctioning	Immediately discontinue use and contact Customer Service (page 10)
Sound machine cannot run continuously.	Timer setting is on	Cancel the timer. See Run Continuously (page 7)
No sound when machine powers on.	Low volume setting	Press volume up button. See Volume Adjustment (page 7)

Cannot find right sound option	Wrong sound mode	Press white noise/fan sound/nature sound button to choose different sound. See Pick a Sound (page 6–7)
Machine turns off automatically	Timer setting is on	Cancel timer setting. See Run Continuously (page 7)
	Unit is running out of battery	Use the provided cable to charge your unit. See Charge Your Dreamegg (page 5–6)
Sound machine makes unusual noise while operating or turning off	Sound machine is defective or malfunctioning	Immediately discontinue use and contact Customer Service (page 10)
Power button turns red	Battery is less than 10%	Use the provided cable to charge your unit. See Charge Your Dreamegg (page 5–6)
Power button doesn't turn green after charging	Charging time is short	Charge more time to see the result
	Battery is defective or malfunctioning	Discontinue use, contact Customer Service (page 10)
For other issues you might come across, contact us at supportjp@mydreamegg.com , we will reply in 24 hours and offer a satisfactory solution for you.		

WARRANTY

Dreamegg Sound Machine comes with 365 days replacement warranty and 60 days money back guarantee, which starts from the purchase date of the order. A defect arises and a valid claim is received within the warranty period at its option. Dreamegg will replace the product with a new item.

Obtaining Service: To obtain warranty service, please email to supportjp@mydreamegg.com with your order ID to register.

Replacement & Refund

1. Would love a replacement for defective products?

Should your product be defective within the specified warranty period, please contact us via supportjp@mydreamegg.com with order number. Once our customer support team hears from you, we will process your request in 24 hours.

2. Not happy with the unit or passed Amazon 30 days return window?

No worries! Be sure to contact Dreamegg customer service at supportjp@mydreamegg.com with your order number. We will process your request faster and easier, usually in 24 hours.

CUSTOMER SERVICE

 supportjp@mydreamegg.com

Need help? Contact us directly at supportjp@mydreamegg.com with your order ID. We are more than happy to serve you in 24 hours. Dreamegg support is here to make sure you are completely satisfied with your product.

FCC DISCLAIMER

This device complies with Part 15 of the FCC Rules. Operation is subject to the following two conditions: (1) this device may not cause harmful interference, and (2) this device must accept any interference received, including interference that may cause undesired operation.

The manufacturer is not responsible for any radio or TV interference caused by unauthorized modifications to this equipment. Such modifications could void the users authority to operate the equipment.

This equipment has been tested and found to comply with the limits for a Class B digital device, pursuant to Part 15 of the FCC Rules. These limits are designed to provide reasonable protection against harmful interference in a residential installation. This equipment generates, uses and can radiate radio frequency energy and, if not installed and used in accordance with the instructions, may cause harmful interference to radio communications. However, there is no guarantee that interference will not occur in a particular installation. If this equipment does cause harmful interference to radio or television reception, which can be determined by turning the equipment off and on, the user is encouraged to try to correct the interference by one or more of the following measures:

- Reorient or relocate the receiving antenna.
- Increase the separation between the equipment and receiver.
- Connect the equipment into an outlet on a circuit different from that to which the receiver is connected.
- Consult the dealer or an experienced radio/TV technician for help.

JOIN DREAMEGG MOVEMENT

Follow @dreameggofficial on Instagram/TikTok for latest product updates and promotions



Our Official Website: www.mydreamegg.com

Contact: supportjp@mydreamegg.com

Our Social Media: @dreameggofficial