



Dreamegg Air Purifier CF-8011N

User's Manual

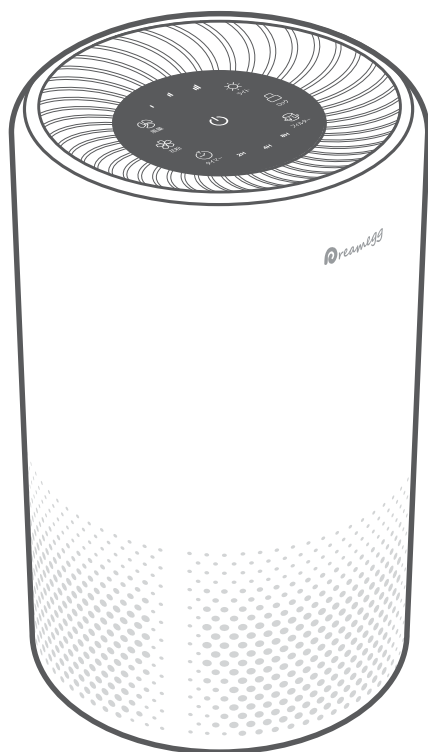


Table of Contents	Page
Warranty Information	1
Safety Information	1
Package Contents	2
Specifications	2
Getting to Know Your Air Purifier	3
About The Filter	4
Getting Started	5
Using Your Purifier	6-8
Care & Maintenance	8-9
Troubleshooting	9-11
Warranty	11
Customer Support	11

HOUSEHOLD USE

WITH WARRANTY

USE ONLY IN JAPAN


Thank you for purchasing the AIR PURIFIER CF-8011N by Dreamegg.
If you have any questions or concerns, please reach out to us at

✉ supportjp@mydreamegg.com

WARRANTY INFORMATION

Thank you for your purchase! Dreamegg Air Purifier 8011N comes with 365 days replacement warranty and 30 days money back guarantee, which starts from the purchase date of the order.

Additional 6-Month Warranty

To extend your extra 6 months warranty and register your new Dreamegg, please email directly to  supportjp@mydreamegg.com with following information

Your Name _____
Amazon Order ID _____

Please complete your registration warranty as above. We will get back with a confirmation email in 24 hours.

※ The warranty is valid only in Japan.

SAFETY INFORMATION

IMPORTANT:

Please read and comply with all of the instructions and warnings provided in this manual before using the unit. Failure to comply with the instructions and warnings provided may result in inaccurate results and/or damage to the product itself.

- **Only** use your air purifier as described in this manual.
- **Only** use your air purifier under the power supply of **100V ~ 110V**.
- **Do not** use your air purifier outdoors.
- **Do not** use without removing the plastic wrap from the filter. The purifier will not filter air, and may overheat, causing a fire hazard.
- **Do not** cover the cord with a rug, carpet, or other covering. **Do not** place the cord under furniture or appliances.
- **Never** place the cord near any heat source.
- Keep the cord out of areas where people walk often. Place the cord where it will not be tripped over.
- **Do not** use your air purifier if it is damaged or not working correctly, or if the cord or plug is damaged. **Do not** try to repair it by yourself. **Contact Customer Support (see page 25).**
- **Do not** use in excessively humid areas.
- Keep your air purifier away from water, and wet or damp areas. Never place in water or liquid.
- Supervise children when they are near the air purifier.
- **Always** unplug the air purifier before moving it, opening the grill, changing filters, cleaning, or whenever the air purifier is not in use. Be sure to unplug it by pulling on the plug not the cord.
- **Do not** use if the plug is covered in dust, damaged or loose.
- **Do not** place anything into any opening on the air purifier.
- **Do not** sit or place heavy objects on the air purifier.
- **Always** place the purifier on a flat, stable surface with the display facing up. **Do not** drop or hit the unit.
- **Do not** use where combustible gases, vapors, metallic dust, aerosol (spray) products, or fumes from industrial oil are present.
- Keep the inside of the air purifier dry. To prevent moisture buildup, avoid placing in rooms with major temperature changes or underneath air conditioners.
- Not for commercial use. Household use **only**.

PACKAGE CONTENTS

If you have any questions or concerns, please reach out to us

(✉ E-Mail: supportjp@mydreamegg.com)



● 1 X Dreamegg Air Purifier 8011N



● 1 X True HEPA Filter (Pre-Installed)

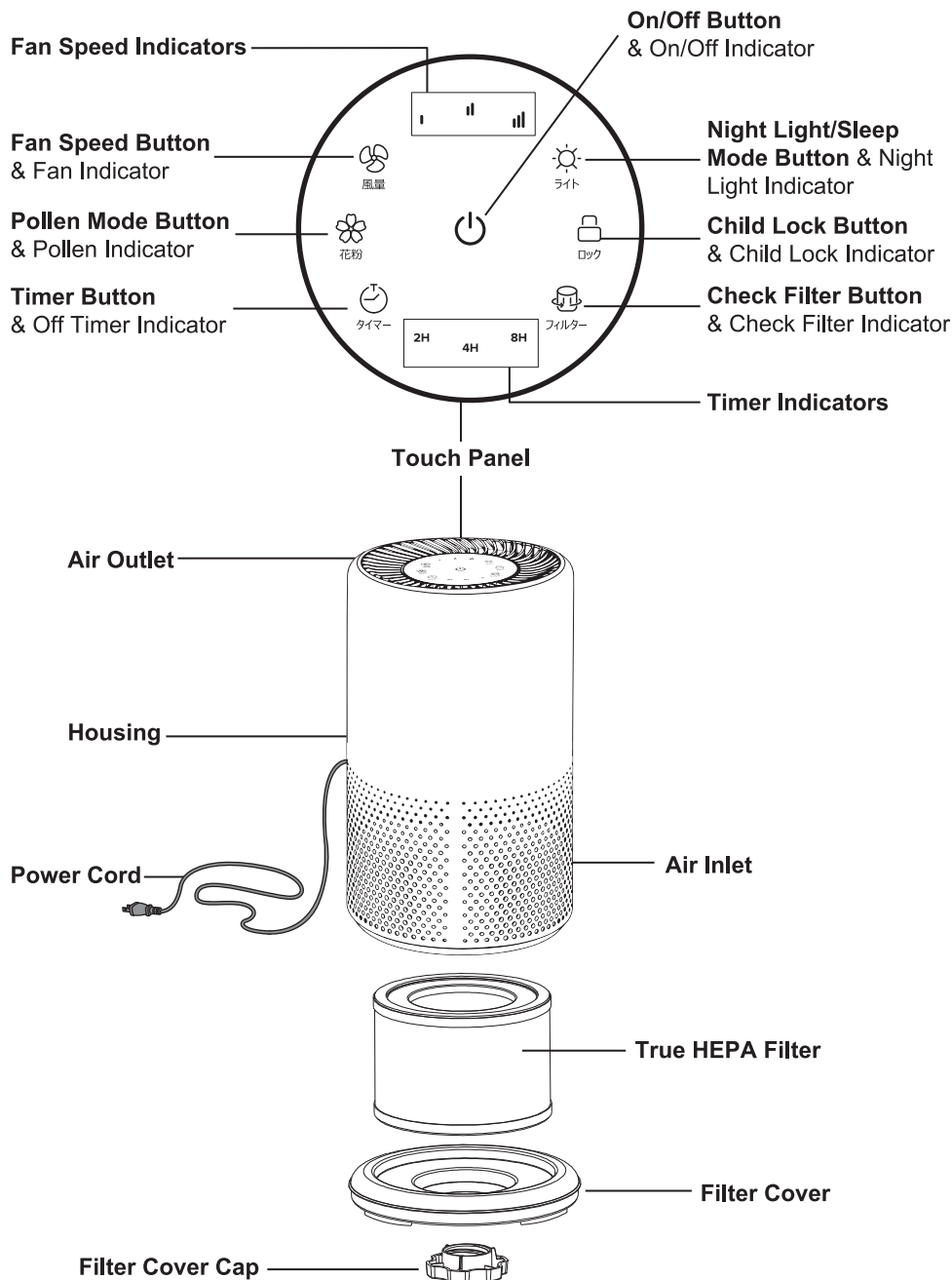


● 1 X User's Manual

SPECIFICATIONS

Model	CF8011N		
Power Supply	100-110V 50/60Hz		
Rated Power	28W		
Effective Range	14m ² -20m ²		
CADR	≤70cfm (119m ³ /h)		
Noise Level	25~55dB		
Timer	√	Check Filter Indicator	√
Night Light	√	Child Lock	√
Minus Ion	×	UV-C Light	×
Dehumidification	×	Humidification	×
Standard For Filter Replacement	4320h		
Dimensions	20 x 20 x 33 cm		
Length Of Power Cord	180cm		

GETTING TO KNOW YOUR AIR PURIFIER

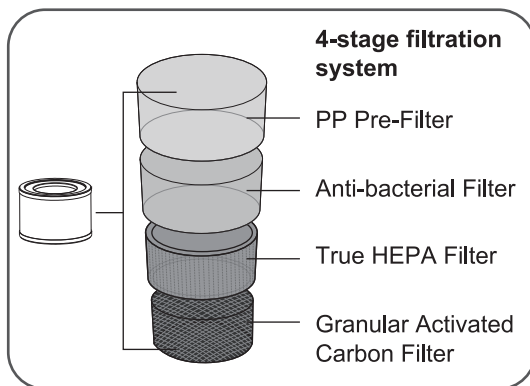


ABOUT THE FILTER

True HEPA Filter has a 4-stage filtration system to purify air.

Captures

- dust, hair
- pet fur
- smoke, tiny dust particles, mold spores
- PM2.5
- 99.97% of airborne particles 0.3 micrometers (μm) in diameter
- bacteria, viruses
- allergens such as pollen, dander, and mites
- unwanted odors and fumes
- formaldehyde, benzene, ammonia, hydrogen sulfide, and volatile organic compounds (VOCs)



NOTE

- Using your air purifier in an environment with relatively high pollution may mean you will need to replace the filter more often, even if Check Filter Indicator is off.
- It takes more time to remove odors than dust.
- You may need to replace your filter if you notice Decreased airflow, Unusual odors, or A visibly clogged filter.

Standard For Filter Replacement

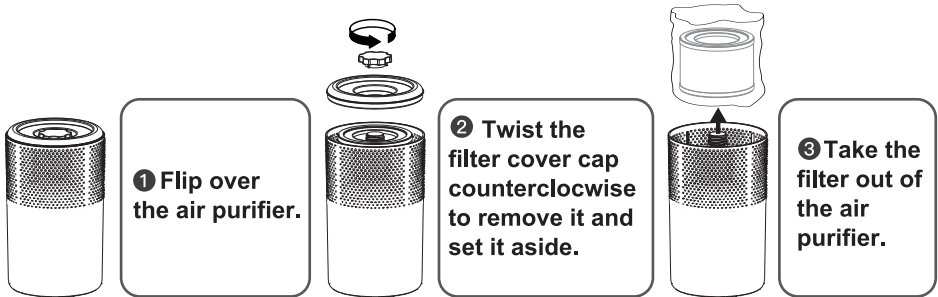
- The filter should be replaced every 6 months(4320 hours). You may need to replace your filter sooner or later depending on how often you use your air purifier. Using your air purifier in an environment with relatively high pollution may mean you will need to replace the filter more often, even if Check Filter Indicator is off.
- You may need to replace your filter if you notice Decreased airflow, Unusual odors, or A visibly clogged filter.
- If your home has high air pollution, you may need to change your filter before Check Filter Indicator lights up.
- Remember to reset the Check Filter Indicator after changing the filter
(See **CARE & MAINTENANCE**, page 22-23).

How to buy replacement filters

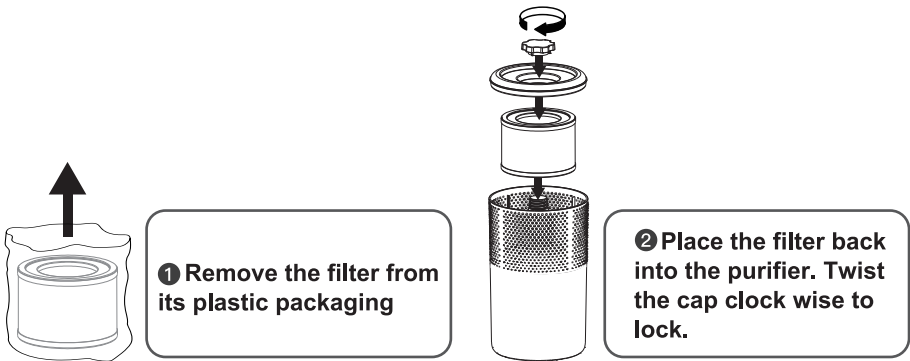
- To maintain the performance of your air purifier, **only** use official Dreamegg filters. To buy replacement filters, go to Amazon and search Dreamegg Filter. If you have any questions or concerns, please contact us at supporttip@mydreamegg.com with order number.

GETTING STARTED

Remove The Filter From Its Plastic Packaging

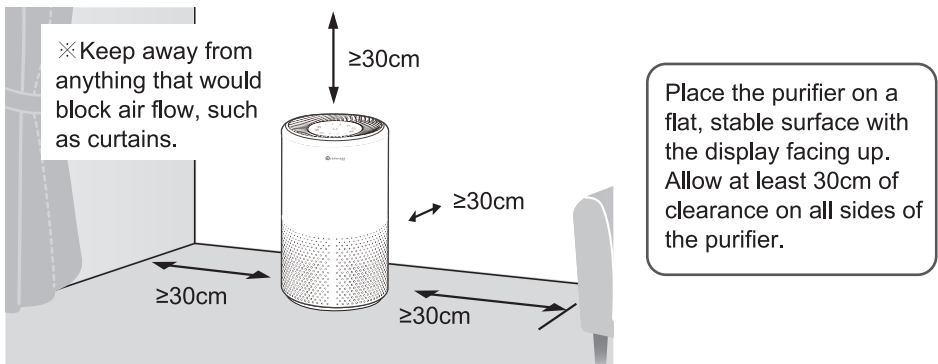


Set Up The Filter



Note: The filter does not have a top or bottom and can be installed either way

Place The Air Purifier



USING YOUR PURIFIER

Turn On / Turn OFF

On



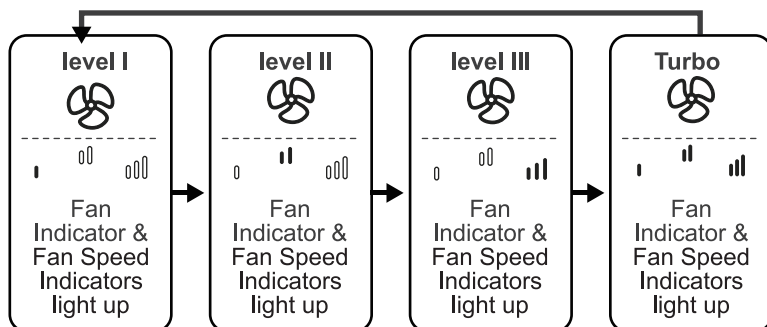
- The fan will start on level I for the first time.
- **Memory Function:** When the air purifier is plugged in, it will remember its previous fan speed setting.

Off



Change Fan Speed

Fan
Sp-
eed



- Fan speed Turbo is the loudest, but cleans air the quickest.
- For best results, or to address a specific air quality issue such as smoke, run the air purifier at high speed (Turbo) for 15–20 minutes before using a lower speed.
- To effectively clean air, keep windows and doors closed while the air purifier is on.

※ The indicators are not buttons and cannot be used to change the fan speed.

Pollen Mode

On



Pollen Mode will automatically change Fan Speed between level III & level II every 10 minutes. It captures not only pollen but also smoke and odors.

※ The Fan Speed Indicators and Fan Indicator will turn off when activated.

Off

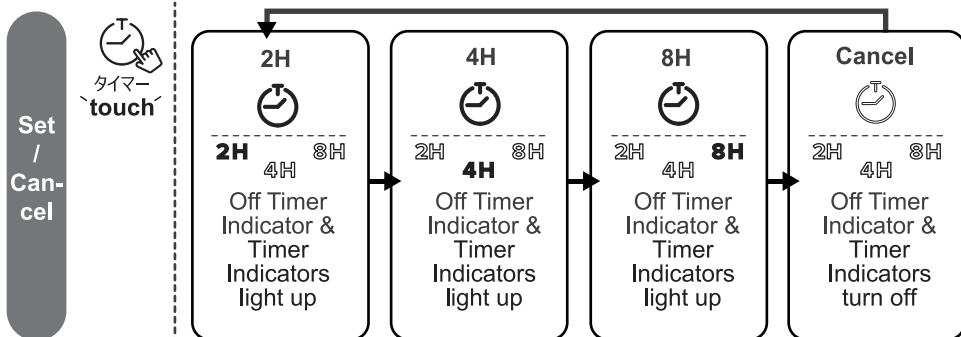


OR

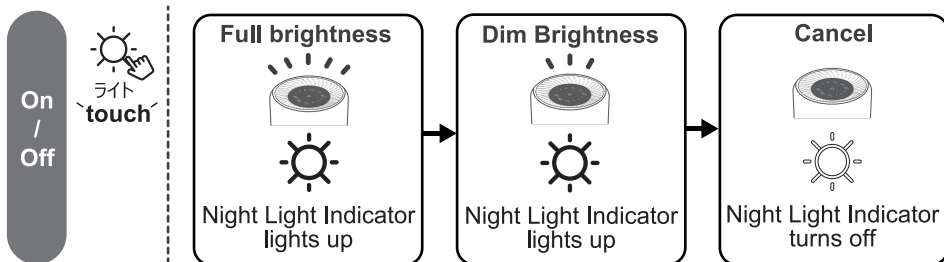


It will remember its previous fan speed setting when turned off.

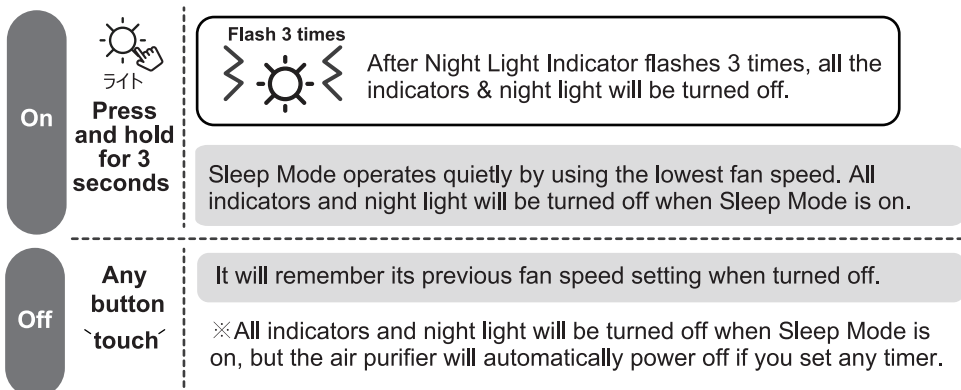
Timer



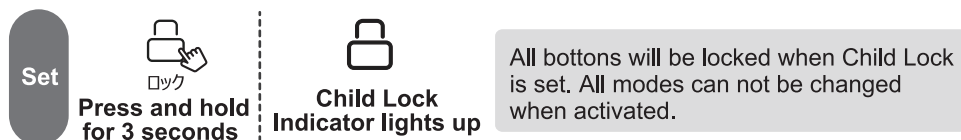
Night Light



Sleep Mode



Child Lock



Can-
cel



Press and hold
for 3 seconds



Child Lock
Indicator turn off

Check Filter Indicator

Re-
minder



lights up red

Check Filter Indicator will light up red as a reminder to check& replace the filter. Depending on how much you use the air purifier, the indicator should turn on red within 6 months (4320 hours). You may not need to replace your filter yet, but you should check it when turns on.

Re-
set



Press and hold
for 3 seconds

Flash 3 times



Check Filter Indicator will be off after
flashing 3 times



Check Filter
Indicator Reset
is done

CARE & MAINTENANCE

Cleaning the Air Purifier

1. Unplug before cleaning.
 2. Wipe the outside of the air purifier with a soft, dry cloth. If necessary, wipe the housing with a damp cloth, then immediately dry it.
 3. Vacuum the inside of the air purifier.
- ※ **Do not** clean with abrasive chemicals or flammable cleaning agents.

Cleaning the Filter

The True HEPA Filter should be cleaned **once a month** to increase the efficiency and extend the life of your filter.

1. Unplug before cleaning.
 2. Clean the inside and outside of the filter using a soft brush or vacuum hose to remove hair, dust, and large particles.
- ※ **Do not** clean the filter with water or other liquids.

Replacing the Filter



1. Unplug the air purifier. Flip the air purifier over and remove the filter cover cap and filter cover (see Getting Started, page 19).
2. Remove the old filter.
3. Clean any remaining dust or hair inside the purifier using a vacuum hose. **Do not** use water or liquids to clean the purifier.
4. Unwrap the new filter and place it into the housing (see Getting Started, page 19).
5. Replace the cover and cap. Plug in the air purifier.
6. **Reset the Check Filter Indicator** after changing the filter.

Resetting the Check Filter Indicator

Reset the Check Filter Indicator when:





lights up

- ① Replace the filter.
- ② Turn on the air purifier.
- ③  Press and hold for 3 seconds.
- ④  will turn off after flashing 3 times when successfully reset.



The filter was changed before lit up.

- ① Replace the filter.
- ② Turn on the air purifier.
- ③  Press and hold for 3 seconds.
- ④  will turn off after flashing 3 times when successfully reset.

TROUBLESHOOTING

Problem	Possible Cause&Solution
Air purifier will not turn on or respond to button controls.	<input type="checkbox"/> Power cable is not plugged correctly. ► Ensure the power cord is plugged tightly into the outlet or change another outlet to check.
	<input type="checkbox"/> Check to see if the power cord is damaged. ► If so, stop using the air purifier and contact Customer Support (see page 25).
	<input type="checkbox"/> Air purifier is malfunctioning. ► Stop using the air purifier and contact Customer Support (see page 25).
Air purifier makes an unusual noise while the fan is on.	<input type="checkbox"/> the filter has not been removed from its plastic packaging. ► Make sure the filter is properly in place with plastic packaging removed (see page 19).
	<input type="checkbox"/> The air purifier may be damaged, or a foreign object may be inside. ► Stop using the air purifier and contact Customer Support (see page 25). Do not try to repair the air purifier.
There is no airflow.	<input type="checkbox"/> The air purifier is not turned on. ► Ensure the power cord is plugged tightly into the outlet and touch the On/Off Button again.
	<input type="checkbox"/> Air purifier is malfunctioning. ► Stop using the air purifier and contact Customer Support (see page 25).
Burnt odor coming from the purifier.	<input type="checkbox"/> Air purifier is malfunctioning. ► Stop using the air purifier and contact Customer Support (see page 25).

Poor air purification quality.	<ul style="list-style-type: none"> ❑ the filter has not been removed from its plastic packaging. ▶ Make sure the filter is properly in place with plastic packaging removed (see page 19).
	<ul style="list-style-type: none"> ❑ The inlet or outlet is blocked. ▶ Make sure no objects are blocking the sides or top of the air purifier (the inlet or outlet).
	<ul style="list-style-type: none"> ❑ The filter is dirty. ▶ Replace the filter (see page 18&22).
	<ul style="list-style-type: none"> ❑ Low fan speed is used for a long time. ▶ Tap the Fan Speed Button to increase the fan speed.
Fan speed suddenly changes without controlling the panel	<ul style="list-style-type: none"> ❑ Pollen mode is on. ▶ Pollen Mode will automatically change Fan Speed between level III & level II every 10 minutes (see page 20).
Mode or fan speed can not be controlled.	<ul style="list-style-type: none"> ❑ Child Lock is set. ▶ Cancel the Child Lock(see page 21).
	<ul style="list-style-type: none"> ❑ Air purifier is malfunctioning. ▶ Stop using the air purifier and contact Customer Support (see page 25).
The Check Filter Indicator turned on red	<ul style="list-style-type: none"> ❑ The air purifier has been used for 6 months(4320 hours). ▶ The Check Filter Indicator is a reminder for you to check the filter and will light up red based on how long the air purifier has been used (see page 22). If you run your air purifier frequently, The Check Filter Indicator will turn on sooner.
	<ul style="list-style-type: none"> ❑ If the Check Filter Indicator turned on red frequently in a short time. Air purifier is malfunctioning. ▶ Stop using the air purifier and contact Customer Support (see page 25)
The Check Filter Indicator still lights up red.	<ul style="list-style-type: none"> ❑ The Check Filter Indicator has not been reset. ▶ Reset the Check Filter Indicator (see page 22).
Strange smell coming from the purifier.	<ul style="list-style-type: none"> ❑ Purifier is used in an area with high humidity. ▶ Make sure not to use your purifier in an area with high humidity or while diffusing essential oils.
	<ul style="list-style-type: none"> ❑ If your home has high air pollution, you may need to change your filter before the Check Filter Indicator lights up. ▶ Clean the filter or replace if necessary.

All indicators flash frequently while the fan is not moving.	<input type="checkbox"/> Power cable is not plugged correctly. ▶ Ensure the power cord is plugged tightly into the outlet or change another outlet to check.
	<input type="checkbox"/> Air purifier is malfunctioning. ▶ Stop using the air purifier and contact Customer Support (see page 25).

WARRANTY

Dreamegg Air Purifier 8011N comes with 365 days replacement warranty and 30 days money back guarantee, which starts from the purchase date of the order. A defect arises or a valid claim is received within the warranty period at its option. Dreamegg will replace the product with a new item.

Obtaining Service:

To obtain warranty service, please email to supportjp@mydreamegg.com with your order ID to register.

Replacement & Refund

1. Would love a replacement for defective products?

Should your product is defective within the specified warranty period, please contact us via supportjp@mydreamegg.com with order number. Once our customer support team hear from you, we will process your request in 24 hours.

2. Not happy with the unit or passed Amazon 30 days return window?

No worries! Be sure to contact Dreamegg customer service at supportjp@mydreamegg.com with your order number. we will process your request faster and easier, usually in 24 hours.

CUSTOMER SERVICE

✉ supportjp@mydreamegg.com

Need help? Contact us directly at supportjp@mydreamegg.com with your order ID. We are more than happy to serve you in 24 hours. Dreamegg support is here to make sure you are completely satisfied with your product.

 dreamegg