

Wi-Fi PlugPro

Quick Installation Guideline

MS-W-09



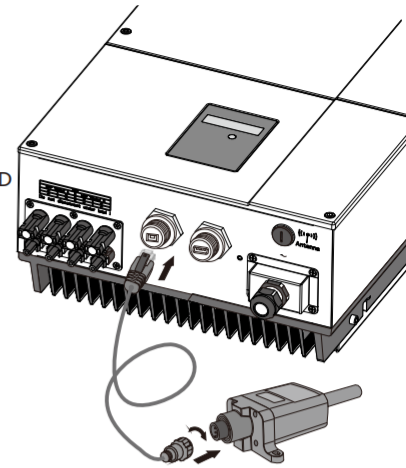
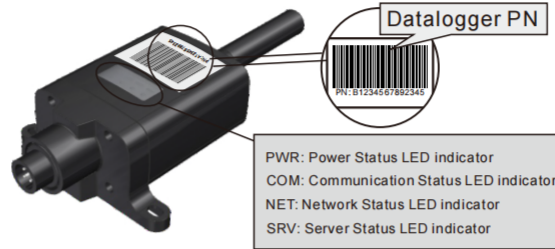
SmartESS(iOS)



SmartESS(Android)

1. Installation

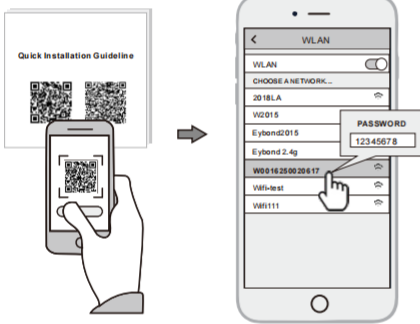
- ① Connect the 4PIN aviation of the Wi-Fi PlugPro to the power cable aviation side and tight it.
- ② Connect the other side of power cable to the inverter.
- ③ Confirm the status of the LED indicator (After step2.3, when 4 LED indicators keep on, showing the normal working status).



2. Wireless Router Connection

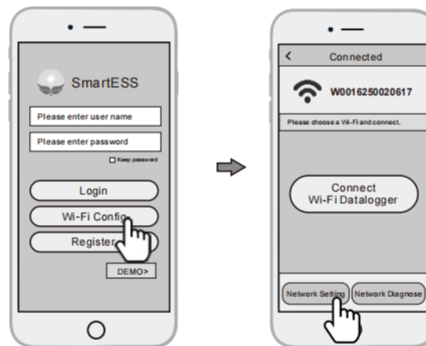
2.1 Download APP and Wi-Fi connection

- ① Scan the QR Code from the cover of this guideline and download the APP.
- ② Select the same number of Wi-Fi PlugPro PN to connect on your phone WLAN. (Initial Password: 12345678)



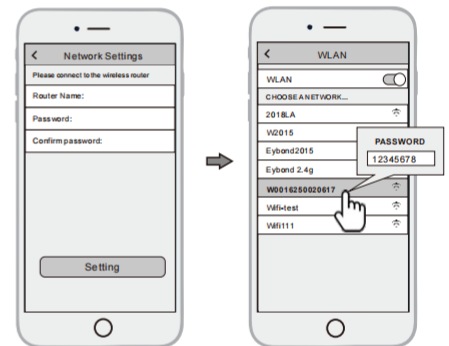
2.2 Wi-Fi Config

- ① Open the APP, Tap the **Wi-Fi Config** button to enter this page.
- ② Then tap the **Network Setting** button.



2.3 Network Setting

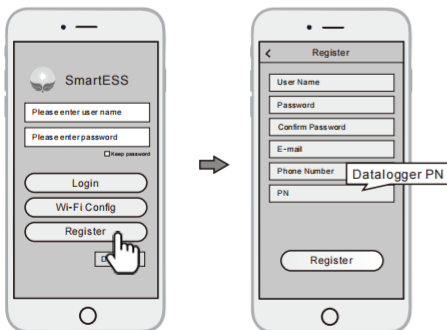
- ① According to the prompts, type in the information to finish the network setting.
- ② After the Wi-Fi PlugPro is restarted, reconnect the Wi-Fi which connected by step 2.1.



3. Create Account And Datalogger

3.1 Create Account

- ① Open the APP, tap the **Register** button.
- ② According to the prompt information, complete creating an account.



3.2 Add Datalogger

- ① Login the account and click the list button on the bottom of the home page.
- ② Tap the "+" button on the top-right corner of the list page.
- ③ Scan the datalogger PN on the Wi-Fi PlugPro, or input it manually.
- ④ According to the prompts, type in the information to finish add datalogger.

