



H O M E L I G H T I N G

## GZBTECH END-TO-END HIGH VOLTAGE LED STRIP LIGHT AND NEON ROPE LIGHT INSTRUCTION

Thanks for purchasing our product. Please read the instructions carefully and keep this manual in safe place. Please retain the package and its inner protective materials for one month or longer. If you have any questions, contact us at [info@gzbtech.com](mailto:info@gzbtech.com). We'd love to hear from you.

### DISCLAIMER

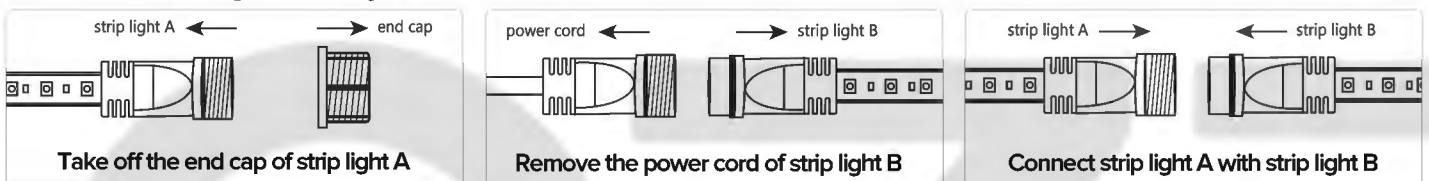
- Dear customer, these instructions are suggested installation procedures only. They do not constitute professional installation and may not necessarily meet all electrical requirements in your state.
- GZBtech assumes no liabilities occurred from improper installation including incorrect cutting or splicing and waterproof insulation damaging etc.
- All of our products are warranted against defects in materials and workmanship for a period of one year from the date of purchasing. We provide 1 month hassle-free full refund, 6 month money back or free replacement and 12 month limited warranty.

### WARNING

- Unplug the light before installing or shortening.
- Do not bend the light to sharp angles or make repeated and continuous bending, as this may damage circuit traces.
- Do not cover this product, as the covering may lead to overheating, melting or igniting.
- Uncoil the light prior to plugging in. Test the light's function before installing or cutting.
- This product has a polarized plug (one blade is wider than the other) which can reduce the risk of electric shock.
- We do not recommend customers to cut, shorten, or splice the light before consulting a qualified electrician.
- Do not mount the light in a manner that can damage the outer jacket or cord insulation. Inspect periodically.
- Do not submerge the light in liquids. IP65 stands for splash-proof, not waterproof or watertight. Please make sure all the connections and the plug get waterproofed additionally before used outdoors. Any water ingress caused by poor waterproof treatment may lead to short circuit and fire.

## 1. HOW TO CONNECT SEVERAL ROLLS

### 1.1 Connect the lights roll by roll



Refer to three steps above to continue further runs up to 145ft per input. Do not exceed to avoid voltage drop. If you need longer length, use another outlet. (Kindly note 4-5" connected section ends up unlighted)

### 1-2. Test the Light

Plug the power supply into an outlet, then the light will instantly light up. If the strip light does not light up, please check the first step. Always keep the rectifier on power wire. Don't remove it.

### 1-3. Waterproof the Connection Area and the Plug

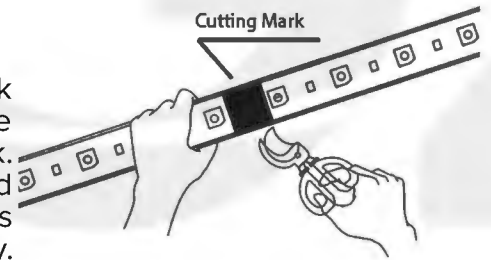
When using strip light outdoors, protect the connected areas and the plug with waterproof enclosure such as waterproof cases.

## 2. HOW TO MAKE SEGMENTS FROM ONE ROLL

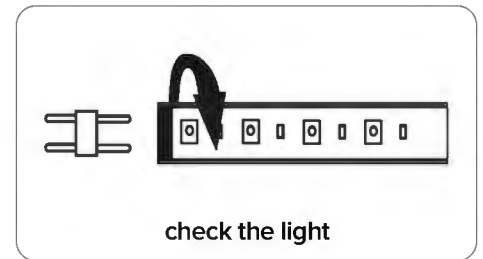
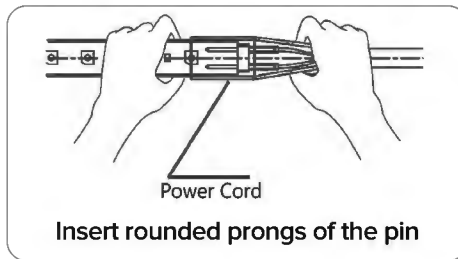
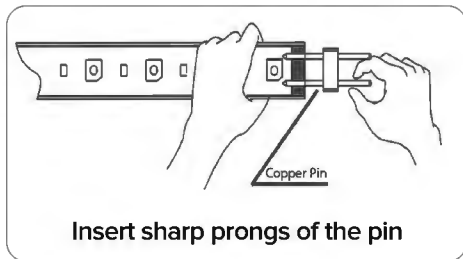
2-1. Connect us on Amazon to buy power cord accessory pack.

### 2-2. Shorten the light.

Disconnect power before you make any cutting. Find cutting mark on the strip light. Take either heavy duty scissors or shears and line it up perpendicularly and cut the light exactly along the cutting mark. If you cut the light anywhere else, the internal circuit will be damaged and the light will not illuminate within the interrupted section that has been severed. Always place a cap at the end of strip light to ensure safety.



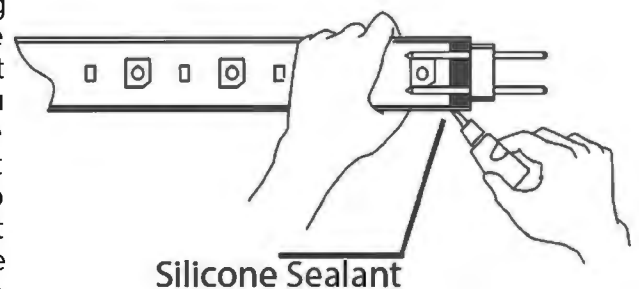
### 2-3. Install the power cord



Disconnect power first. Locate and identify the 2 wires in the LED strip light. Then line up the sharp prongs of the pin with the strip light wires. Gently insert the pin into the LED strip light making sure to make a solid and correct connection with the internal wire. The pins do not need to be fully inserted, if you push the pins too far into the strip, it may cause damage to the wires or cause a short circuit. Insert rounded prongs of the pin into the power cord. As LED lights are polarized, if they do not light up when you plug them in, simply unplug the power cord, reverse the power cord as indicated and reconnect the strip light again.

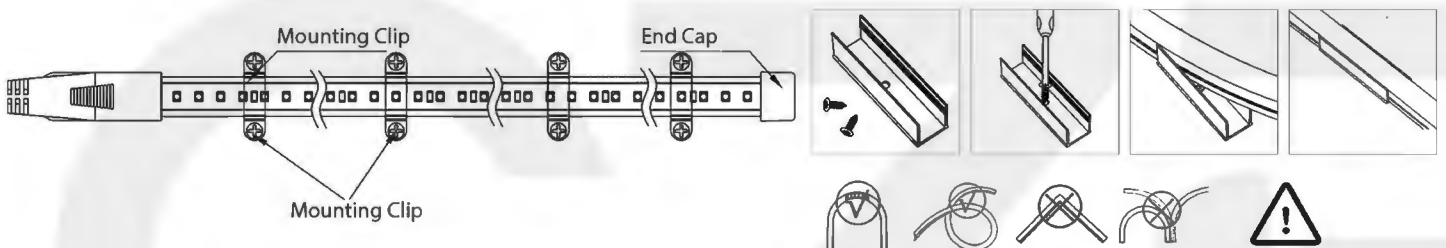
### 2-4. Waterproof the Connection Area and the Plug

Before using strip light outdoors, waterproof it by applying silicone adhesive liberally into the inside and outside of the connected area. Gently press out any bubbles, wipe out excess adhesive and let it dry for 24 hours. In addition, you can cut off about two inch of the heat shrink tubing and slide it over the connected area. Then use the heat gun/ heat pencil/ lighter to heat up the tubing to create the seal. To achieve better performance and prolong life span, protect the connected areas and the plug with waterproof enclosure such as waterproof cases when using strip light outdoors.



## 3. HOW TO MOUNT THE LIGHT

Fix mounting clips with screws onto surface and snap strip light into place.



Visit our website and contact us for more help

 <https://www.gzbtech.com>  
 [info@gzbtech.com](mailto:info@gzbtech.com)