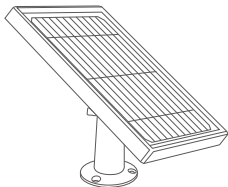
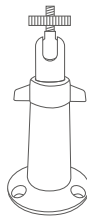


HeimVision HMS1 Solar Panel Quick Start Guide

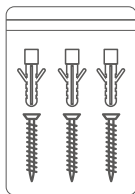
I . Packing List



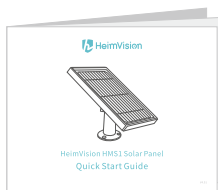
Solar Panel



Bracket



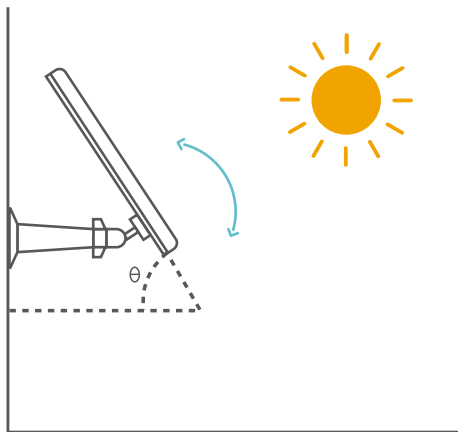
Screw Package



User Manual



II . Position & Angle Selection

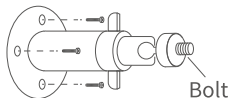


- 1 Select a position where the panel collects sunlight the most throughout the year.
- 2 Adjust it to the ideal angle (Your local latitude+5°) towards the sun.

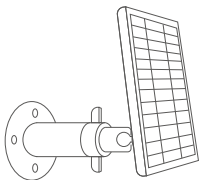
Note:

It takes only a few hours of direct sunlight that your camera can be powered up by our **HMS1** solar panel. The amount of electricity that the solar panel can produce varies according to the weather, seasons, geographic locations, etc.

III. Installation

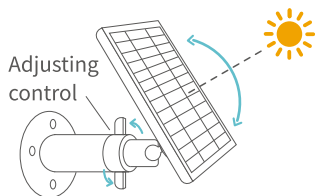


- 1 Mount the bracket on the position that you chose before with the screws provided.



- 2 Fasten the solar panel onto the bracket's bolt until the solar panel is fixed, **a loose connection may cause a fall** thus damage the solar panel.

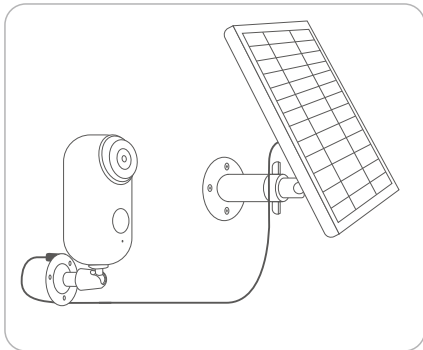
- Note:**
The threaded hole is on the back of the solar panel.



- 3
 - a. Loosen the adjusting control on the bracket (**Don't adjust before you loosen it.**)
 - b. Adjust the angle of solar panel so that it can receive as much sunlight as possible.
 - c. Fasten the adjusting control to fix the angle of your solar panel.



IV. Connect to Camera

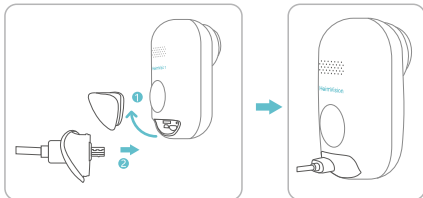


Connect the solar panel to **HMD2** camera with the micro-USB connector.

! Notes:

- 1 Make sure your solar panel is uncovered.
The generating efficiency of solar panel drops if the panel is even partly covered.
- 2 Please tilt your solar panel at a certain angle thus there is no standing water or dust on its surface.
- 3 Remove the dust or leaves on the panel regularly if there are.

V. Connection Safety



Make sure the camera is connected to the weatherproof cover tightly all the way.

! Note:

The weatherproof cover is to protect your camera from water and dust. A loose connection may lead to a short-circuit.

FCC STATEMENT

This device complies with Part 15 of the FCC Rules. Operation is subject to the following two conditions:

- (1) This device may not cause harmful interference, and
- (2) this device must accept any interference received, including interference that may cause undesired operation.

NOTE:

This equipment has been tested and found to comply with the limits for a Class B digital device, pursuant to Part 15 of the FCC Rules. These limits are designed to provide reasonable protection against harmful interference in a residential installation. This equipment generates uses and can radiate radio frequency energy and, if not installed and used in accordance with the instructions, may cause harmful interference to radio communications. However, there is no guarantee that interference will not occur in a particular installation. If this equipment does cause harmful interference to radio or television reception, which can be determined by turning the equipment off and on, the user is encouraged to try to correct the interference by one of the following measures:

- Reorient or relocate the receiving antenna.
- Increase the separation between the equipment and receiver.
- Connect the equipment into an outlet on a circuit different from that to which the receiver is connected.
- Consult the dealer or an experienced radio/TV technician for help.

WARNING:

Any changes or modifications not expressly approved by the party responsible for compliance could void the user's authority to operate this equipment.



IC STATEMENT

This device complies with RSS247 of Industry Canada. Cet appareil se conforme à RSS247 de Canada d'Industrie. This device complies with Industry Canada license-exempt RSS standard(s). Operation is subject to the following two conditions:

- (1) this device may not cause interference, and
- (2) this device must accept any interference, including interference that may cause undesired operation of the device.

Appareils radio exempts de licence. Son fonctionnement est sujet aux deux conditions suivantes:

- ① le dispositif ne doit pas produire de brouillage préjudiciable, et
- ② ce dispositif doit accepter tout brouillage reçu, y compris un brouillage susceptible de provoquer un fonctionnement indésirable.

CAUTION

RISK OF EXPLOSION IF BATTERY IS REPLACED BY AN INCORRECT TYPE.

DISPOSE OF USED BATTERIES ACCORDING TO THE INSTRUCTIONS

 The symbol indicates DC voltage



RECYCLING

This product bears the selective sorting symbol for Waste electrical and electronic equipment (WEEE). This means that this product must be handled pursuant to European directive 2012/19/EU in order to be recycled or dismantled to minimize its impact on the environment. User has the choice to give his product to a competent recycling organization or to the retailer when he buys a new electrical or electronic equipment.



CUSTOMER SUPPORT

North America support@heimvision.com

United Kingdom support.uk@heimvision.com

France support.fr@heimvision.com

Italia support.it@heimvision.com