

Lenovo

TRUE WIRELESS EARBUDS

HT30
USER GUIDE

PACKAGE CONTENTS



Charging Case



Earbuds



Charging Cable



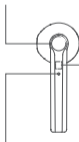
User Guide

Thank you very much for purchasing our products, please read this guide carefully before using it.

INSTRUCTIONS

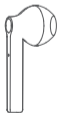
EARBUDS

Touch Button



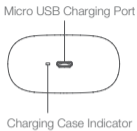
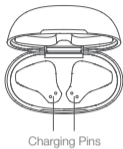
LED Indicator

Microphone



Charging Contacts

CHARGING CASE



HOW TO WEAR



Insert the earbud into your ear and rotate to fit comfortably.

EARBUDS LED INDICATOR GUIDE

SYSTEM STATE	INDICATOR ACTIVITY
Power on	The LED indicator stays blue for 1 second.
Power off	The LED indicator flashes red twice.
Pairing mode	The LED indicator flashes red and blue alternately.
Charging	The LED indicator stays red.
Fully Charged	The LED indicator goes off.

CHARGING CASE INDICATOR GUIDE

SYSTEM STATE	INDICATOR ACTIVITY
Charging	The charging case indicator flashes blue slowly.
Fully charged	The charging case indicator stays blue.

HOW TO CHARGE

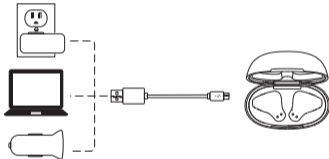
Charge the earbuds

Put the earbuds into the charging case.

NOTE: When your earbud battery life is low, you will hear a voice reminder.

Charge the charging case

- 1) Plug the small end of the USB cable into the Micro USB port of the charging case.
- 2) Plug the other end into a USB wall charger or computer (DC 5V) that is powered on.



NOTE: It takes approximately 2 hours to fully charge the charging case. A fully charged charging case can charge the earbuds approximately 3 times.

AUTOMATIC POWER ON / OFF

Power on: Open the lid of the charging case and take the earbuds out.

Power off: Put the earbuds back into the charging case.

NOTE: When the charging case is out of power, putting the earbuds back in the charging case will not turn the earbuds off.

MANUAL POWER ON / OFF

Power on / off: Tap and hold the touch button on the left / right earbud for 5 seconds.

NOTE: When the two earbuds are paired with the phone, turn off one earbud manually will make the other one be off at the same time.

PAIRING & CONNECTIVITY

- 1) Turn on the Bluetooth of your Bluetooth device.
- 2) Take the earbuds out of the charging case and they will enter pairing mode automatically and the LED indicator on the earbud will flash red and blue alternately.

- 3) Choose "HT30" from the list of found Bluetooth devices on your Bluetooth device to pair.

NOTE:

- Make sure the earbuds and your Bluetooth device are next to each other within 33 feet or 10 meters and there are no obstacles between.
- If pairing failed, put the earbuds back into the charging case make sure that they have been turned off. Then pair the earbuds with your Bluetooth device again.
- When the earbuds are on but not paired with a Bluetooth device, they will be automatically off after 5 minutes.
- The earbuds will connect to the last paired Bluetooth device automatically when they are turned on. Please turn on the Bluetooth of your Bluetooth device before turning on the earbuds.

PRIMARY / SECONDARY MODE

These earbuds have primary-secondary switch function.

- When the earbuds have been connected to a Bluetooth device, take out either of the two earbuds, it can be connected and used normally. During this period, you can take out the other one and they will pair with each other so you can use both of the earbuds.

- When both earbuds are connected to your phone, no matter which one is put back to the charging case, you can use the other one without interruption.

EARBUDS FUNCTIONS

FUNCTION	WHAT TO DO
Play / Pause	Tap the touch button of the left/right earbud.
Next track	Double-tap the touch button of the left/right earbud.
Previous track	Tap the touch button of the left/right earbud 3 times.

CALL FUNCTIONS

FUNCTION	WHAT TO DO
Answer / End	Tap the touch button of the left/right earbud.
Decline	Double-tap the touch button of the left/right earbud.

ACTIVATE VOICE CONTROL OF PHONE

After the earbuds are connected to your phone, tap and hold the touch button for 2 seconds and remove your finger from the touch button.

Tap and hold the touch button for 2 seconds again to exit. (This function works only when your phone has voice control function; please refer to the instructions of your phone for details.)

CLEAN THE EARBUDS & CHARGING CASE

Clean the earbuds and charging case only with a dry, soft cotton swab or equivalent.

FAQ

Q Pairing fails.

A If the pairing fails, check the following points:

- 1) Put the earbuds back to the charging case and make sure that they are off.
- 2) Take the earbuds out of the charging case and they will enter pairing mode automatically.
- 3) Choose "HT30" in your phone to pair.

If the pairing still fails, check the following points:

- 1) Make sure the earbuds and your Bluetooth device are next to each other or within 33 feet or 10 meters and there are no obstacles between.

2) There are no signal interferences nearby (check the question "Connection is not stable" for signal interference conditions).

3) Try to reboot your Bluetooth device.

- Q I paired the earbuds with my phone before, but I failed to pair them with my phone again.
- A Turn on the Bluetooth of your phone and in "MY DEVICES", choose "HT30" and tap "①" -> "Forget This Device". Then pair the earbuds with your phone again.
- Q Connection is not stable.
- A Make sure that the Bluetooth connection distance is within 33 feet or 10 meters and there is no object between the earbuds and your Bluetooth device, no radio or WIFI interference nearby.
- Q Power runs out fast.
- A The earbuds playtime varies according to the volume level and audio content. Please put the earbuds back into the charging case to avoid unnecessary power consumption.
- Q The earbuds which are being charged in the charging case reconnect to my phone.
- A When the charging case is out of power during charging, the earbuds will automatically turn on and reconnect to the last paired Bluetooth device. If the earbuds are not paired with the Bluetooth device, they will be automatically off after 5 minutes.

PRODUCT SPECIFICATIONS

Bluetooth Version	v 5.0
Battery (each earbud)	30mAh
Battery (charging case)	300mAh
Earbuds Charging Time	Approximately 1 Hour
Charging Case Charging Time	Approximately 2 Hours
Input Rating	DC 5V / 1A
Music Playing / Call Time	4-5 Hours per Charge
Use with Charging Case	Up to 20 Hours
Bluetooth Connection Distance	Up to 33 feet or 10 meters (No obstacle between)
Supporting Protocols	A2DP / HFP / HSP / AVRCP
Working Temperature	-10°C to 40°C

IMPORTANT SAFETY INFORMATION

- Don't remove or replace the Battery, including sensitive electronic components, including a battery, and can be damaged or cause injury if dropped, burned, punctured, crushed, disassembled, or if exposed to excessive heat or liquid. Don't use damaged batteries and electronic components.

- Disposal and recycling information

Don't treat the product and battery as a household waste or into a fire. When you decide to dispose of the product and its battery, please follow the local environmental laws to handle the battery to avoid an explosion.

- Medical device interference

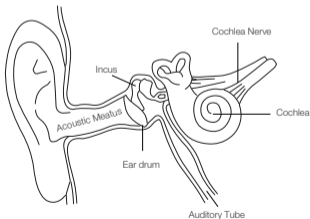
The product contains components and radios that emit electromagnetic fields and also contains magnets. These electromagnetic fields and magnets may interfere with pacemakers, defibrillators, or other medical devices. Maintain a safe distance of separation between your medical device and product. Consult your physician and medical device manufacturer for information specific to your medical device. Stop using product if you suspect it is interfering with your pacemaker, defibrillator, or any other medical device.

■ Listen Responsibly

To avoid hearing impairment, please make sure to turn down the volume of the music player before connecting the earphones. After putting the earphones into/onto the ears, turn up the volume gradually until to a comfortable listening level. Noise level is measured in decibels (dB). Exposure to 85dB or higher noise will lead to gradual hearing impairment. Please supervise your usage and the hearing impairment is a function of loudness against time.

The louder the sound is, the shorter you can be exposed. The softer the sound is, the longer you can listen.

■ Ear physiology diagram



■ Use Responsibly

Don't use headphones in unsafe situations, such as driving, crossing the street, or engaging in anything that requires concentration or in such an environment. Using earphones while driving is not only dangerous, but also breaking the law in many places because it reduces the chances that you will hear the sounds of your life outside your car, such as those of other cars Sirens and ambulance sirens. Don't wear headphones while driving. Instead, you can use the in-car FM transmitter to listen to content on mobile media devices.

NURSING AND WEAR CONSIDERATIONS

- Periodically clean, especially the parts in contact with the skin. Use a clean, moist cloth.
- Do not allow the product to come into contact with hot and acidic liquids.
- Wear loosely, to ensure that the air circulation.
- Remove the product from time to time, in order to clean, but also let the skin freely.
- Do not open the housing or demolition.
- Do not use if the display breaks.
- Do not place the product in the washing machine or drying machine.
- Do not expose your product to extremely high or low temperatures.
- Do not sweat in the sauna or steam room to use the product.
- Do not make the product for a long time by the direct sunlight.
- Do not place the product in a fire process. The battery may explode.
- Do not use abrasive cleaners to clean the product.
- If the product gets wet, do not charge.
- If you feel product in the heat, remove it.

Environmental, recycling, and disposal information

General recycling statement

Lenovo encourages owners of information technology (IT) equipment to responsibly recycle their equipment when it is no longer needed. Lenovo offers a variety of programs and services to assist equipment owners in recycling their IT products. For information on recycling Lenovo products, go to:

<http://www.lenovo.com/recycling>

Important WEEE information



Electrical and electronic equipment marked with the symbol of a crossed-out wheeled bin may not be disposed as unsorted municipal waste. Waste of electrical and electronic equipment (WEEE) shall be treated separately using the collection framework available to customers for the return, recycling, and treatment of WEEE. Country-specific information is available at:

<http://www.lenovo.com/recycling>

Recycling information for India

Recycling and disposal information for India is available at:

http://www.lenovo.com/social_responsibility/us/en/sustainability/ptb_india.html

Battery recycling mark



Battery recycling information
for the European Union

Batteries or packaging for batteries are labeled in accordance with European Directive 2006/66/EC concerning batteries and accumulators and waste batteries and accumulators. The Directive determines the framework for the return and recycling of used batteries and accumulators as applicable throughout the European Union. This label is applied to various batteries to indicate that the battery is not to be thrown away, but rather reclaimed upon end of life per this Directive. In accordance with the European Directive 2006/66/EC, batteries and accumulators are labeled to indicate that they are to be collected separately and recycled at end of life.

The label on the battery may also include a chemical symbol for the metal concerned in the battery (Pb for lead, Hg for mercury, and Cd for cadmium). Users of batteries and accumulators must not dispose of batteries and accumulators as unsorted municipal waste, but use the collection framework available to customers for the return, recycling, and treatment of batteries and accumulators. Customer participation is important to minimize any potential effects of batteries and accumulators on the environment and human health due to the potential presence of hazardous substances, for proper collection and treatment go to:

<http://www.lenovo.com/recycling>

Restriction of Hazardous Substances Directive (RoHS)

Turkish

The Lenovo product meets the requirements of the Republic of Turkey Directive on the Restriction of the Use of Certain Hazardous Substances in Waste Electrical and Electronic Equipment (WEEE).

Türkiye AEEE Yönetmeliğine Uygunluk Beyanı Bu Lenovo ürünü, T.C. Çevre ve Orman Bakanlığı' nın 'Atık Elektrikli ve Elektronik Eşya Bazı Zararlı Maddelerin Kullanımının Sınırlandırılmasına Dair Yönetmelik (AEEE)' direktiflerine uygundur. AEEE Yönetmeliğine Uygundur.

Ukraine

Цим підтверджуємо, що продукція Леноводповідно є вимогам нормативних актів України, які обмежують вміст небезпечних речовин

India

RoHS compliant as per E-Waste (Management & Handling) Rules, 2011

Vietnam

Lenovo products sold in Vietnam, on or after September 23, 2011, meet the requirements of the Vietnam Circular 30/2011/TT-BCT ("Vietnam RoHS").

European Union

Lenovo products sold in the European Union, on or after 3 January 2013 meet the requirements of Directive 2011/65/EU on the restriction of the use of certain hazardous substances in electrical and electronic equipment ("RoHS recast" or "RoHS 2").

For more information about Lenovo progress on RoHS, go to:

http://www.lenovo.com/social_responsibility/us/en/RoHS_Communication.pdf

FCC Statement

This equipment has been tested and found to comply with the limits for a Class B digital device, pursuant to part 15 of the FCC Rules. These limits are designed to provide reasonable protection against harmful interference in a residential installation. This equipment generates uses and can radiate radio frequency energy and, if not installed and used in accordance with the instructions, may cause harmful interference to radio communications. However, there is no guarantee that interference will not occur in a particular installation. If this equipment does cause harmful interference to radio or television reception, which can be determined by turning the equipment off and on, the user is encouraged to try to correct the interference by one or more of the following measures:

- Reorient or relocate the receiving antenna.
- Increase the separation between the equipment and receiver.
- Connect the equipment into an outlet on a circuit different from that to which the receiver is connected.
- Consult the dealer or an experienced radio/TV technician for help.

This device complies with part 15 of the FCC Rules. Operation is subject to the following two conditions:

(1) This device may not cause harmful interference, and (2) this device must accept any interference received, including interference that may cause undesired operation.

Changes or modifications not expressly approved by the party responsible for compliance could void the user's authority to operate the equipment.

Manufactured, distributed, or sold by Beijing Kangshuo Information Technology Co. , Ltd official licensee for this product. LENOVO and the Stylized LENOVO Logo are trademarks or registered trademarks of Lenovo (Beijing) Ltd.

All other trademarks are the property of their respective owners.

Reduce | Reuse | Recycle



Printed in China