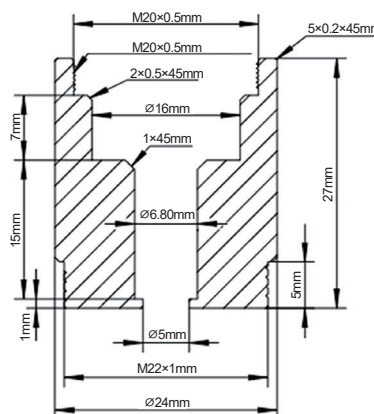


CO₂ Laser Alignment Tool



Safety Information

! Warning!

- **ALWAYS** turn off and fully disconnect your engraver from power before using this device. For maximum safety, wait 30 minutes before use to allow time for any remaining electricity in your engraver's various power supplies' capacitors to fully discharge.
- **DO NOT** direct this laser towards anyone's eyes and take care to avoid harmful reflection of the laser beam. Use of protective eyewear is recommended to prevent accidents.
- **DO NOT** allow children to use this device without close supervision.
- Remove and set aside the focal lens housing carefully to avoid any damage. Reattach it in accordance with the cleaning instructions in your laser engraver manual, making sure that the lens remains pointed in the correct direction.
- Take care to avoid leaving dust or oily residue on your engraver's mirrors during alignment. Use of clean gloves is recommended to avoid leaving any smudges that might cause excessive heating and misdirected reflections.

Specifications

Battery Type	1×CR1632 Lithium (3V DC)
Laser Class	3A
Laser Power	5mW
Laser Wavelength	650 nm (Visible Red)
Dimensions	×0.94 in. (×24 mm)
Threading	M22×1
Net Weight	2.1 oz. (60 g)

Operation

1. Turn off your engraver. Disconnect it from power or turn off its intermediate surge protector. For maximum safety, wait 30 minutes before continuing to allow time for its internal capacitors to fully discharge.
2. Place a soft cloth on the workbed under your engraver's laser head. Carefully remove the focus lens casing at the bottom of the laser head and set it aside. Take note of which side of the focus lens should face up.
3. If you have not already done so, unscrew the knurled end of the alignment tool and insert its lithium coin battery. Close it, point it at a nonreflective surface, and test that it is working by pressing the button. Turn the tool off.
4. Carefully insert the alignment tool into the laser head and screw it tightly into place.
5. Always taking care to wear protective eyewear or to avoid directly looking into the red laser or its reflection, turn on the laser and begin aligning your engraver's mirrors in reverse order. Begin with the mirror above the laser head, then the mirror at the end of the X axis gantry, then the mirror beside your laser tube. Slowly adjust the positioning screws behind each mirror as described in your laser engraver manual until the red laser directly targets the center of next mirror in turn.
6. When the laser shines directly from its position at the bottom of the laser head to the center of your laser tube, your engraver's laser path is fully aligned. Carefully remove the alignment tool and replace the focus lens at the bottom of the laser head. Make sure that the lens is still in place and facing the correct direction. Remove the cloth and get started engraving again.

Maintenance

- Clean with a soft dry towel. Do not wash this device or clean it with powerful solvents or abrasives.
- Store this device in a cool dry place inaccessible to children. For maximum service life, remove the lithium battery and store it separately after each use.

Contact Us

Thank you for choosing our products! If you have any questions or comments, contact us at help@cs-supportpro.com and we'll resolve your issue ASAP!

For a .pdf copy of the latest version of these instructions, use the appropriate app on your smartphone to scan the QR code to the right.

