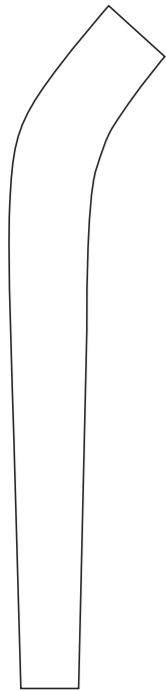
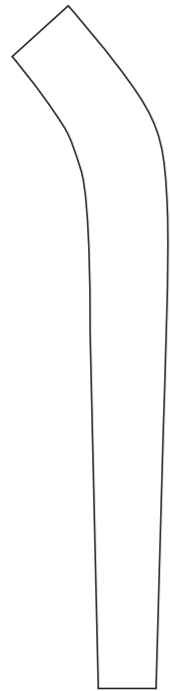


KK001 Cycling Tights



RIGHT SIDE PANEL



LEFT SIDE PANEL



COLORS USED (PMS / CMYK):



? C



? C



? C



? C

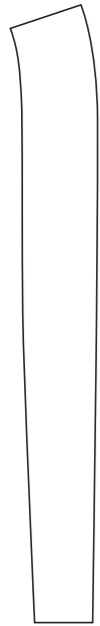


? C

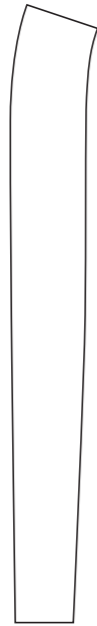


? C

KK002 Cycling Tights



RIGHT SIDE PANEL



LEFT SIDE PANEL



COLORS USED (PMS / CMYK):



? C



? C



? C



? C

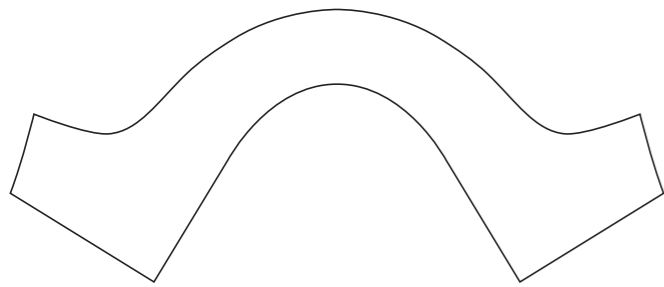


? C



? C

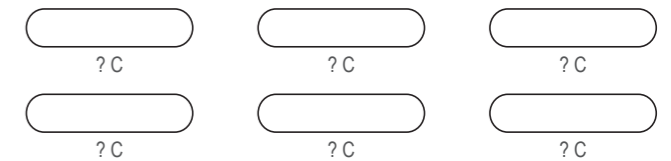
KK003 Cycling Tights



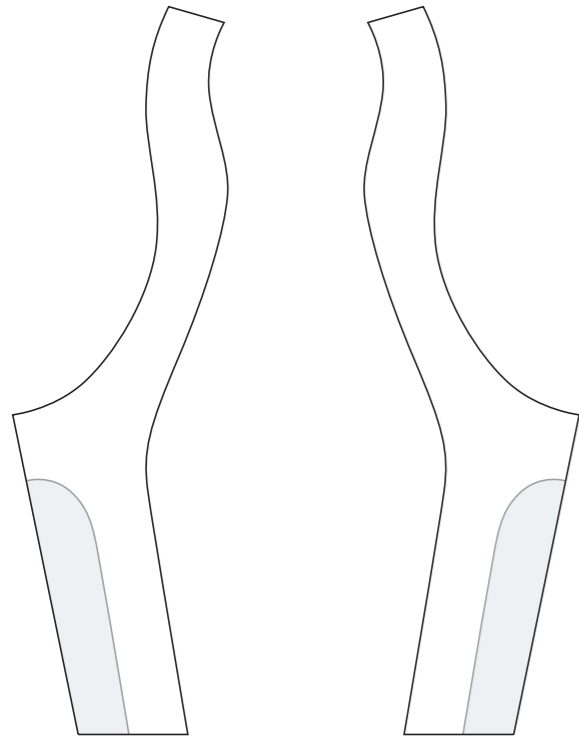
REAR PANEL



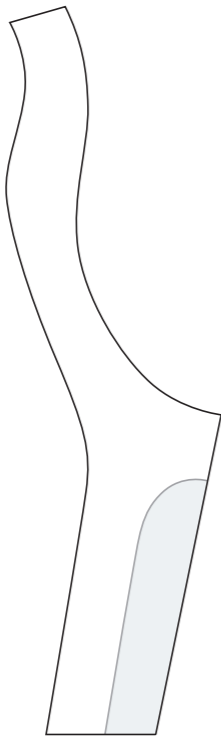
COLORS USED (PMS / CMYK):



KK004 Cycling Tights



RIGHT SIDE PANEL



LEFT SIDE PANEL



COLORS USED (PMS / CMYK):



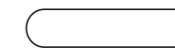
? C



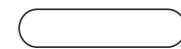
? C



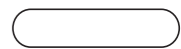
? C



? C



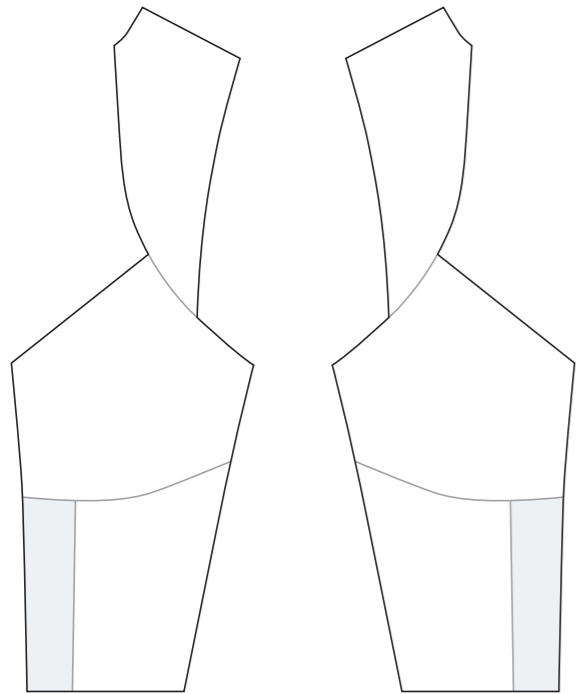
? C



? C

KK005 Cycling Tights

Women's Specific Cut



RIGHT SIDE PANEL

LEFT SIDE PANEL



COLORS USED (PMS / CMYK):



? C



? C



? C



? C



? C



? C

✉ sales@limkoo.com

📘 🐦 📷 [limkooapparel](https://www.limkooapparel.com)