

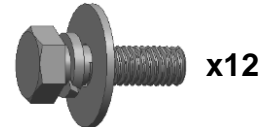
8mm Nylon
Lock Nut



8mm x24mm
Flat Washer



8mm Plastic
Washer



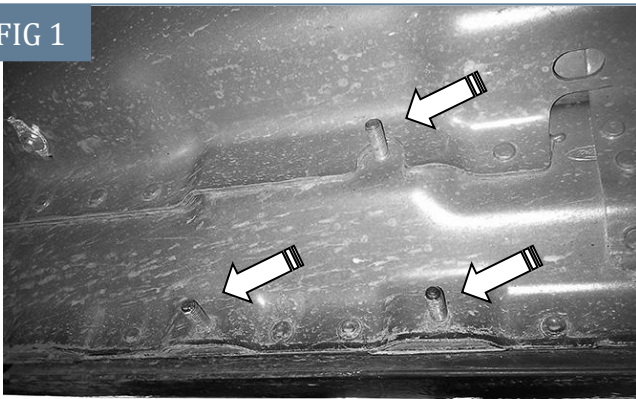
8mm x 25mm
Combo Bolt

PLEASE NOTE THAT THE FOLLOWING PICTURES ARE BASED ON THE PASSENGER SIDE INSTALLATION

STEP 1

Start the installation under the Passenger/Right side of the vehicle. Locate the front factory mounting location along the inner side of the body, **(Fig 1)**. Use a wire brush or thread chaser die to remove excess paint and/or undercoating from all studs.

FIG 1

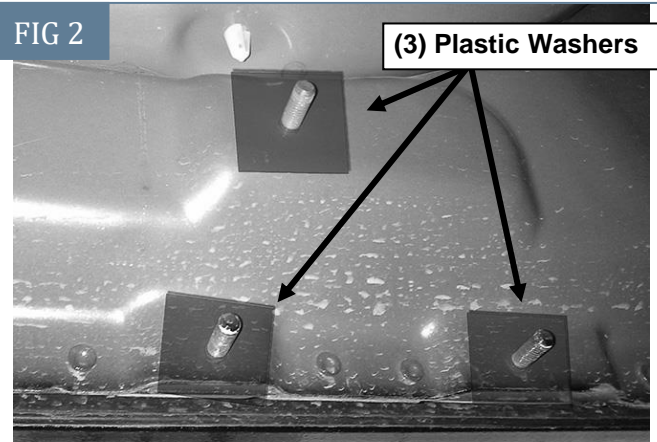


(Fig 1) Example of typical mounting location

STEP 2

Slide (1) Plastic Washer over each of the (3) factory mounting studs in the body panel, **(Fig 2)**. **IMPORTANT:** The Plastic Washers are designed to prevent corrosion between the aluminum body panel and the steel mounting brackets. **Do not install the Brackets without the Plastic Washers.**

FIG 2

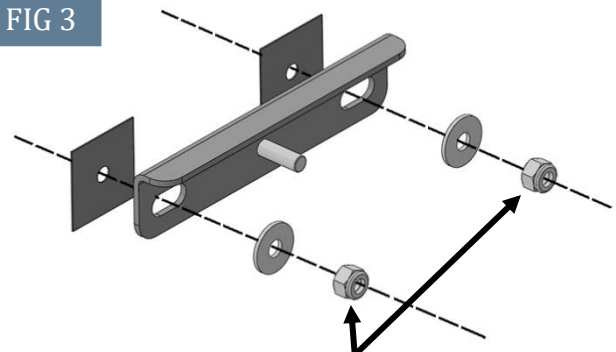


(Fig 2) Thread Plastic Washers onto all mounting studs

STEP 3

Select (1) Support Mounting Bracket (#1). Attach the Bracket to the studs with (2) 8mm Flat Washers and (2) 8mm Nylon Lock Nuts, **(Figs 3-4)**. Do not tighten hardware.

FIG 3



(2) 8mm Plastic Washers
(2) 8mm Flat Washers
(2) 8mm Nylon Lock Nuts

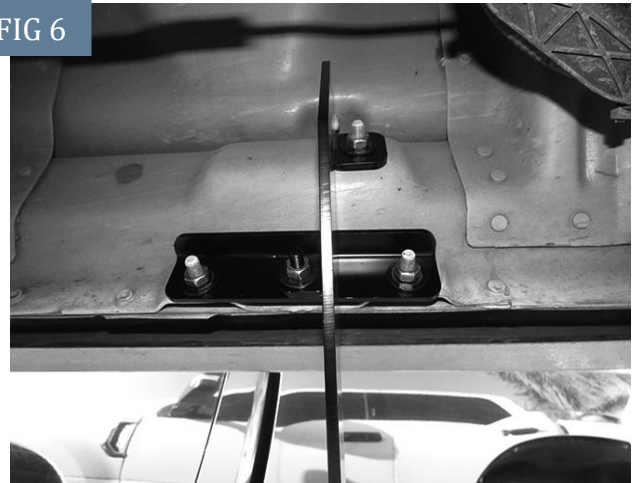
(Fig 3) Attach (1) Support Bracket (#1) to the mounting location

FIG 4



(Fig 4) Example of the Support Bracket (#1) attached to the threaded studs

FIG 6

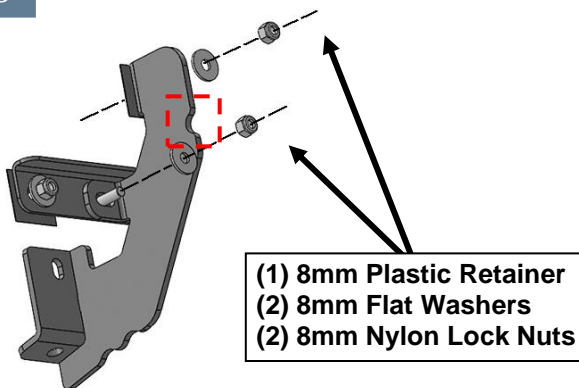


(Fig 6) Example of the Mounting Bracket attached to the upper mounting stud and Support Bracket

STEP 4

Then attach (1) Front Mounting Bracket (#2) to the upper factory mounting stud and support bracket with (1) Plastic Retainer, (2) 8mm Flat Washers, and (2) 8mm Nylon Lock Nuts, (Figs 5-6). **Note:** There is a notch on the back of the Front bracket.

FIG 5



(Fig 5) Attach Front Mounting Bracket (#2) to the upper mounting stud and Support Bracket

STEP 5

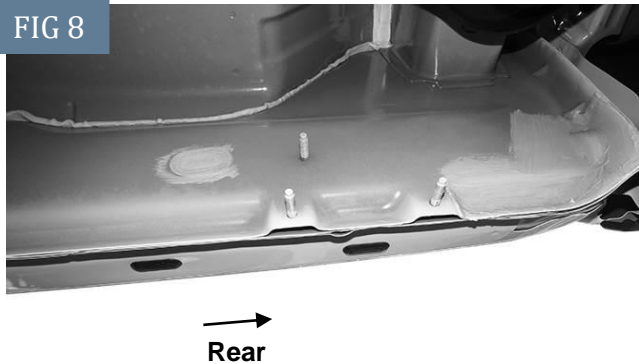
Repeat **Step 2—4** to attach the remaining (2) Support Mounting Brackets (#1) and (2) Center/Rear Mounting Brackets (#3) to the Passenger/Right center and rear mounting locations along the body panel.

FIG 7



(Fig 7) Passenger/Right Center mounting location

FIG 8

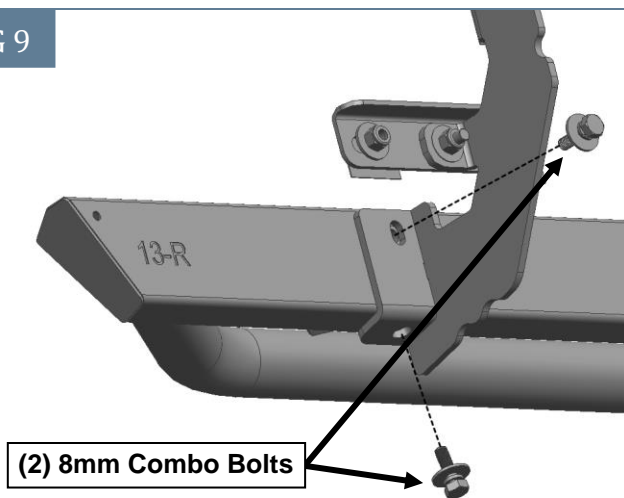


(Fig 8) Passenger/Right Rear mounting location

STEP 6

Select (1) Passenger/Right Rocker Step. **NOTE:** The Passenger/Right Rocker Step will have a “13-R” on the front. Carefully place Rocker Step on the brackets. **IMPORTANT:** Do not slide the Rocker Step front to back or damage to the finish may result. Attach Rocker Step to the Mounting Brackets with (6) 8mm Combo Bolts, (Fig 9). Do not tighten hardware.

FIG 9



(Fig 9) Attach the Passenger/Right Rocker Step to the (3) Mounting Brackets

STEP 7

Level and adjust the Rocker Step and fully tighten all hardware.

STEP 8

Repeat **Steps 1—7** to attach the Driver/Left Rocker Step.

STEP 9

Do periodic inspections to the installation to make sure that all hardware is secure and tight.

Attention

To protect your investment, do not use any type of polish or wax that may contain abrasives that could damage the finish.

Mild soap may be used also to clean the Rocker Step.