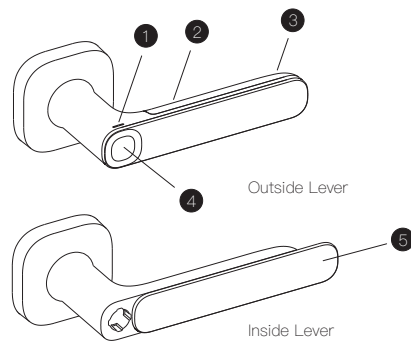




Fingerprint Lock Quick Start Guide

Please follow us on YouTube channel: YEEUU
or visit our website: YEEUU.com
or email to support@yeeuu.com
to get more info of operation manual.

Lock Show



- ① Indicator Light
- ② Card Identification Area
- ③ Battery Cover
- ④ Fingerprint Identification Area
- ⑤ Sliding Closure

Warnings/Cautions

Please do not drench the Outside Lever.

Please do not wipe the fingerprint identification area with a damp cloth.

Please do not scratch the fingerprint identification area with a sharp object.

Please do not use new batteries with old ones.

Please do not discard used batteries at will.

Instructions

Note: Make sure batteries are installed in the Lever.

Download the APP:

Login Google Play or App Store to search "YEEUU"; Download "YEEUU" APP.

Add device:

Register and login the account of "YEEUU"; Click "Add Device" or click the symbol "+" at the upper right corner on "Home" page; Select "Auto Scan" to start the search; After the device is searched, click "next" to connect the lock for adding.

Add / use fingerprint to open the door:

Login "YEEUU" APP; Select the device and enter into "Set" page; Click "Fingerprint Management" to enter into the page; Click "Add Fingerprint" or the symbol "+" at the upper right corner to input fingerprint according to directives; Put the finger with fingerprint input on the fingerprint identification area on the Outside Lever; Press down the Outside Lever to open the door when the green light flashes.

Add/use card to open the door:

Login "YEEUU" APP; Select the device and enter into "Set" page; Click "Door card management" to enter into the page; Click "Add Door Card" or the symbol "+" at the upper right corner to activate card according to directives; Put the card close to the inside of the Outside Lever, near the battery compartment; Press down the Outside Lever to open the door when the green light flashes.

Use APP to open the door:

Login "YEEUU" APP; Select the device to enter into the page, click the icon in the page center after APP is connected with the lock; Press down the Outside Lever to open the door when the green light flashes.

View records:

Login "YEEUU" APP; Select the device to enter into the page; After APP is connected with lock, click "Opening Record" / "Alarm" to enter into the page to view opening/alarm records.

Turn on "Stay Unlock" mode:

After the fingerprint is recognized successfully, press and hold the fingerprint identification area for 8 seconds until the white indicator light starts to flash, and then keep the white light on for 2 seconds more to turn on the "Normal Open" function. White light indicates in the normal fingerprint identification under "Normal Open" mode.

Turn off "Stay Unlock" mode:

Please press and hold the fingerprint identification area for 8 seconds until the green indicator light starts to flash, and then keep the green light on for 2 seconds more to turn off the "Stay Unlock" function. Green light indicates in the normal fingerprint identification under "Stay Unlock" mode.

Basic Parameters

Identification Mode: Fingerprint, Card and Smartphone

Speed of Unlocking by Fingerprint/Card: <1s

Storage Capacity (Fingerprints & Cards): 100PCS (Max. Fingerprint 50PCS)

Working Voltage: 3.3 V (2 x Alkaline AAA batteries)

Battery Life: Up to 1 year (unlock 10 times a day)

Working Humidity: 40%RH ~ 80%RH (no frost)

Working Temperature: -20°C ~ 70°C

Hardware Type: Latch

Door Thickness: 1-5/16" to 2-3/16" (33 mm - 55 mm)

Door Prep: 2-1/8" (54 mm) diameter face hole & 1" (25 mm) diameter latch hole

Backset: Adjustable to 2-3/8" or 2-3/4" (60 mm or 70 mm)

Outside Lever Material: Premium zinc alloy

Battery Cover Material: PC + ABS fireproof material

Finish: Stoving varnish

Low Power Alarm: Yellow light flashes

Failed Opening Attempts: Disabled after 15 fingerprint failed opening attempts or 6 card failed opening attempts

Alarm for Illegal Unlocking: Quick buzzing

Frequently Asked Question

Opening door by APP fails

Check whether the batteries are loaded and working properly; Check the networking status of mobile phone and perform operation again; Remove the batteries and re-load; Try to perform operation by approaching the lock.

Opening door by card fails

Check whether the batteries are loaded and working properly; Confirm whether the card has been activated by APP; Remove the batteries and re-load.

Opening door by fingerprint fails

Check whether the batteries are loaded and working properly; Confirm whether the fingerprint has been input by APP; Remove the batteries and re-load; Ensure that the finger is dry.

Yellow light flashes when open the door

Low power, please replace 2 new AAA batteries in time.

Red light flashes and buzzing for 5 times when open the door

If the fingerprint identification failure exceeds 15 times or the card identification failure exceeds 6 times, the lock will be locked, please use APP to open the door or try to unlock the door with fingerprint/card a minute later.

No response when open the door

Please check if the battery is loose; if the battery is dead, please replace the battery.

Login/registration cannot be performed normally

Check whether the network running properly.

How to reset your device

Login "YEEUU Smart" APP; Select the device to enter into page; Click the "Edit" icon at the upper right corner; Click "Remove Device" to reset the lock.



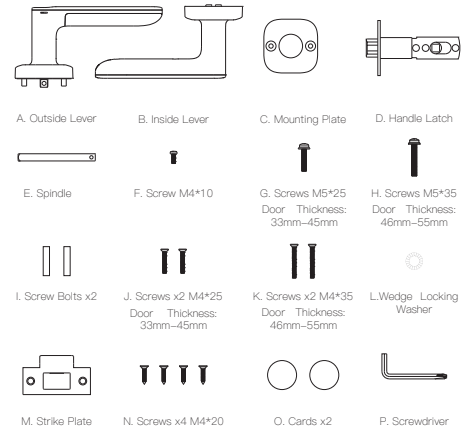
Hidden High Tech

Fingerprint Lock
Hangzhou Ujia Technology Co., Ltd.

Made in China

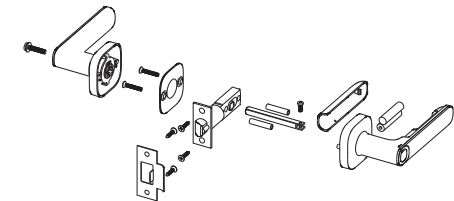


Before You Start



Privacy Function Show

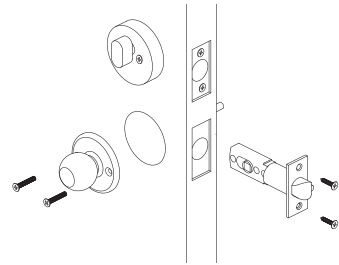
Installation the same regardless of model shown.



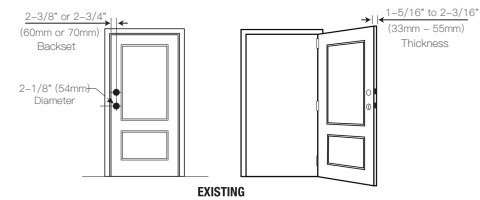
Install in Order

1. Prepare Door

1) Open door and remove your existing Latch.



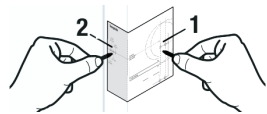
2) Check your door prep measurements, and record.



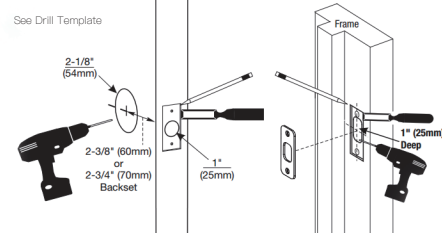
3) Prepare door & frame.

Necessary only for new doors or adjusting existing prep.

A. Use template to mark holes on door

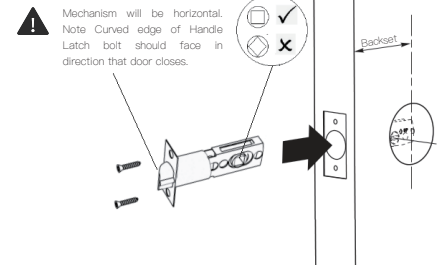
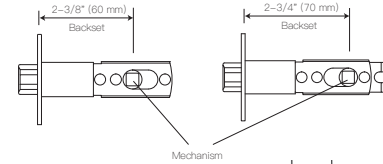


B. Drill Holes



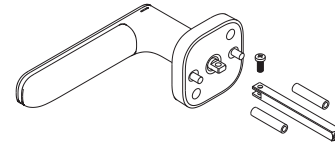
2. Install Handle Latch

Check dimensions, if necessary, adjust Handle Latch, install Handle Latch.

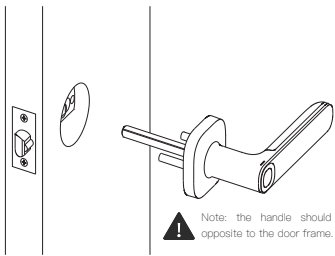


3. Install Outside Lever

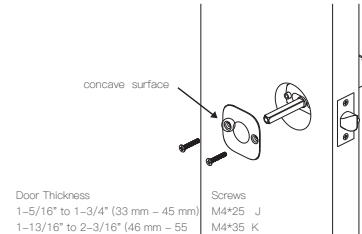
1) Prepare Outside Lever



2) Insert Outside Lever

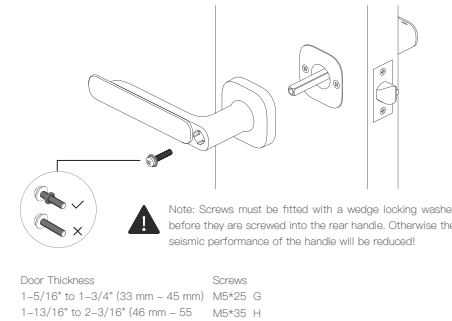


3) Install Mounting Plate



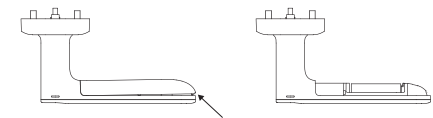
4. Install Inside Lever

Open Sliding Closure, tighten screw, close Sliding Closure.



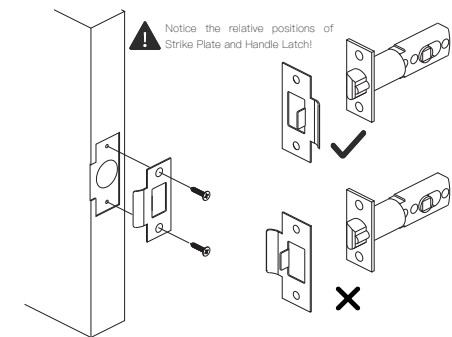
5. Install Batteries

Remove Battery Cover, load batteries, install Battery Cover.



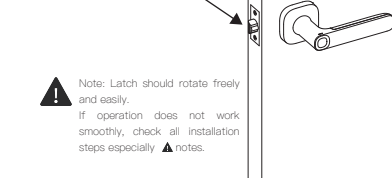
6. Installing Strike Plate

Necessary only for new doors or adjusting existing prep.



7. Testing Operation

Close door and check Latch operation.



Congratulations, you've installed the YEEUU Fingerprint Lock!