



TOWING MIRRORS USER MANUAL

SKU: SH-TMLC79-8418-SLI
SH-TMLC79-8418-BLK



ABOUT US

Founded in 2018, the San Hima brand stands for passion and enthusiasm for exploring the spectacular nature of the great outdoors. Since its inception, the trusted solutions and proven designs that San Hima offers to the market have made adventure and travelling flexible and enjoyable!

Based in Australia, San Hima has under its umbrella a wide selection of outdoor solutions, including cargo systems, vehicle protection accessories and tow & trailer parts, that are designed to help you carry your gear wherever your passion takes you and boost your performance when conquering the peaks!

At San Hima, we have wild souls and we are committed to designing products that are tough enough to take on any adventures and at the same time, making them safe and easy to use. These values in our conviction are what drive us to make innovations. Since pursuit your passion shouldn't be complicated.

Live the Peak, Conquer the Everest, San Hima is your brand of choice!

SAFETY INSTRUCTIONS

- These mirrors are designed ONLY for Toyota Land Cruiser 70-79 1984-2019.
- DO NOT use the mirror for any purpose other than for which it is designed.
- Only have your mirrors extended when towing.
- Always check the condition of the mirror before every journey, if any part is damaged or missing, DO NOT use.
- Please use a glass cleaner to maintain the clarity of the mirror's glass. When cleaning the surface, make sure to use a microfiber cloth to avoid scratches.

CONTENTS

- 1 x Left hand side mirror
- 1 x Right hand side mirror
- 2 x Rubber Pads
- 1 x Super Glue
- 1 x Mounting Hardware
- 1 x Base Bolt Cover Caps Kit



SH-TMLC79-8418-BLK



SH-TMLC79-8418-SLI

TOOLS REQUIRED (NOT INCLUDED)

- Phillips screwdriver
- Flat screwdriver
- Ratchet with socket
- Trim panel removal tool
- Drill
- Drill bit

SPECIFICATION

- Product Weight (Single): 4.32kg
- Vehicle: Toyota Land Cruiser 70-79 1984-2019
- Color: Black & Silver
- Flat Mirror Adjusting Type: Manual
- Convex Mirror Adjusting Type: Manual
- Extension Type: Manual
- Folding Type: Manual
- Housing Material: ABS
- Base Material: Aluminum

INSTALLATION

1. Prepare the Vehicle

First start with removing the door panels as per recommended manufacturer's instructions. Once this is done you can remove the OE mirrors, you will also need to remove your Toyota badge to allow installation.

This is easily done by carefully using a heat gun to heat up the badge to soften the glue, or you can use a small piece of fishing line behind the badge and pull through to cut the tape away. (FIG 1)



Figure 1

Remove the Badge on 76 & 78 Series

Removing this badge will leave small holes showing in your door after the final mirror fitment as they are held in place with locator pins.

NOTE: You can opt to leave your badge in place and cover it with your mirror.



76 & 78 SERIES

79 SERIES

Figure 2

2. Prepare Mirror Bases

Mark and Drill Out Base Holes

If you fit the towing mirrors to a vehicle with the extended OE mirrors with 4 fixing points, you may find that the bottom two holes are fitted with rivet nuts. If this is the case we recommend removing these rivet nuts and using the supplied backing plate in the mounting hardware.

The LC76 Wagon and 78 Troopcarrier will require you to drill two base fitting holes through your door skin. (FIG 2) The easiest way to do this is to place your mirror and align it to your door.

Tighten your top two bolts so you are happy with the fit and then mark the two base holes. Mark the centre location of your holes and remove your mirror. Place the securing plate over your marks to ensure the holes you are about to drill will line up.

Supplied Rubber Pads

You will need to fit the supplied rubber pads to your mirrors prior to installing the mirrors to your vehicle.

3. Fit the Mirrors

Secure Bolts & Backing Plates

The top mounting holes in the door are already fitted with securing nuts so for this you will just need the securing bolts with washers.

To secure the base holes you will need to place the supplied backing plates (FIG 3) on the inside of the door skin. These plates have already been fitted with fixing tapes. Clean the area inside the door with wax and grease remover prior to placing the plate over the pre-drilled holes.

Position your mirror, insert the securing bolt with washers through the hole of the metal grommet (FIG 4) and then into the hole of the mirror base. Hand tighten the bolt with a Phillips screwdriver.



Figure 3

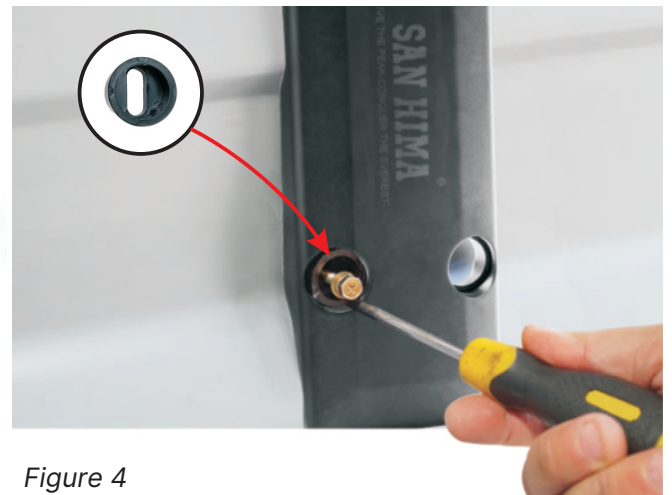


Figure 4

Tighten Four Securing Bolts

Once you are happy that your mirror is aligned and in place, you can fully tighten the four securing bolts with a socket. (FIG 5)



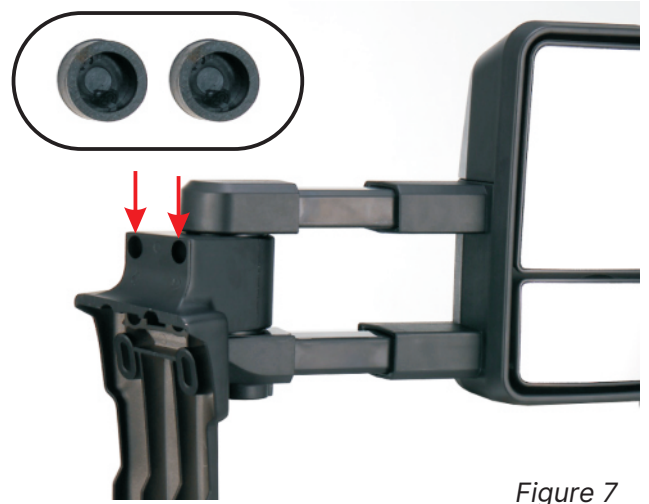
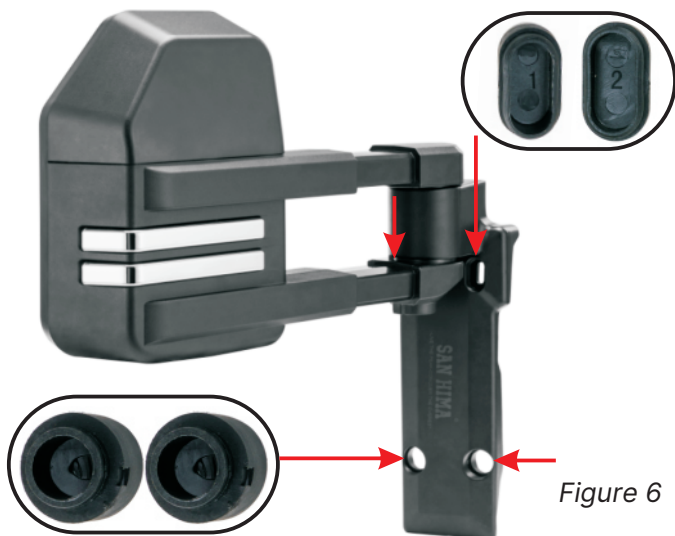
Figure 5

Push in Covers

In your base bolt cover caps kit you will find 4 push in covers per mirror (FIG 6) to cover your securing bolts.

The 2 small push in covers per mirror (FIG 7) should be used to cover the 2 exposed bolts which are above the securing bolts.

Carefully place them in and make sure they are secure.



4. Re-fix Badge

You can now re-fix your badge, this is best done with double sided 3M tape. (FIG 8)

IMPORTANT

All that is left to do is to check if your mirror is functioning correctly and adjust it to suit your driving position.





WARRANTY

WARRANTY PERIOD:

San Hima warrants that each pair of our towing mirrors that is purchased while this Warranty is in effect will be free from defective workmanship and materials for a period of 3 years.

WHAT DOES THE WARRANTY COVER?

Under normal usage conditions, this warranty covers:

1. Any defect in design or manufacture which results in its failure to perform correctly as described.
2. Damage or loss incurred in transit.
3. We will either replace the product or provide you with a refund at our discretion provided that the fault is found to have been caused by a design or manufacturing defect and not misuse or tampering.
4. Shipping costs of returning the product for a proven defect.
5. The limited warranty is the only one that applies to this unit, and it sets forth all the responsibilities of San Hima.

THE WARRANTY DOES NOT COVER:

1. Travel and /or other expenses due to customer's location.
2. Damage caused by adverse weather, extreme temperature, accidents, negligence, daily wear and tear, alteration, incorrect installation, improper use such as having your mirrors extended when not towing, or failure to check the condition of your mirrors before every journey.
3. This unit is not intended for commercial use.