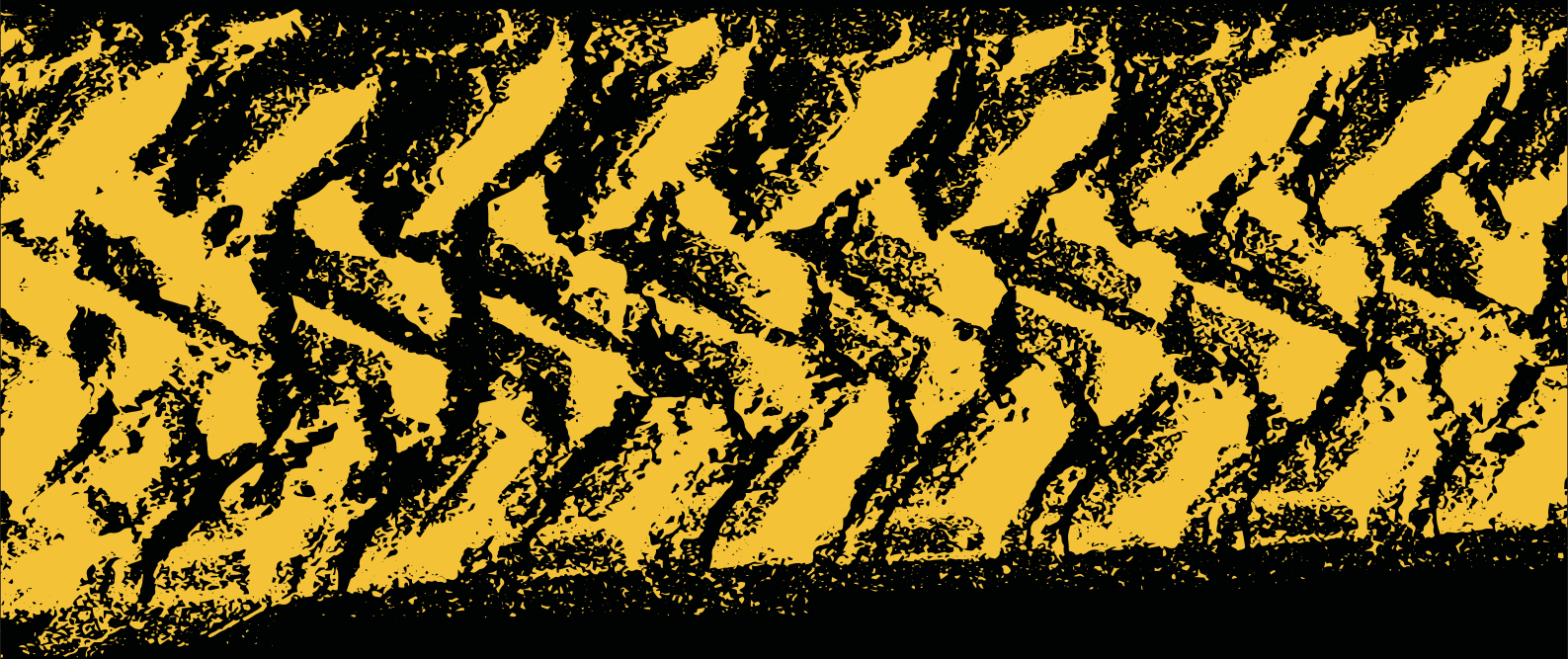




**COMPLETE RECOVERY KIT
USER MANUAL**



SKU: RECOVERY-KIT002A

V1.0

BUNKER INDUST, a disruptive force that aims to help people pursue their passions in the great outdoors with rugged looks and impeccable safety, is a professional provider of a full lineup of 4x4 upgrades and accessories that enable off-road enthusiasts to upgrade their vehicles and pursue an outdoor lifestyle.

At BUNKER INDUST, we regularly spend time outdoors to understand your desire to have an ideal rig. But that move is challenging and time-consuming. But it's what sets us apart. Because we are driven by enthusiasm, not commission, and share the same passion for vehicle upgrade as you do.

When you decide to build a vehicle to hit the trails, BUNKER INDUST is here to prepare it with virtually all the off-road parts required to keep you safe, and make sure your vehicle looks and performs as you want it to.

BUNKER INDUST, Build Your Own Legend.

IMPORTANT NOTE



WARNING
INCORRECT USE MAY RESULT IN INJURY OR DEATH



Vehicle OCCUPANTS and BYSTANDERS have been KILLED by flying projectiles (such as tow balls) when recovery straps have been attached incorrectly. NEVER attach recovery straps to vehicle fittings such as tow balls, tow bars, tie-down points or tow hooks. ONLY attach recovery straps to an APPROVED recovery point/device that is suitably rated for use with the straps. BEFORE attempting a vehicle recovery all passengers must exit the vehicles and stand as far away as possible.

WARNINGS

- Exceeding the capacity of this product will cause it to fail. Do NOT use this product if it is damaged in any way and always inspect prior to use.
- Only use the snatch strap for the purpose it was designed for.
- Never use your strap for lifting or conventional towing.
- Persons intending to use this product should consider completing a nationally recognised four-wheel drive training course, or contact a four-wheel drive club for comprehensive advice on the proper selection and use of the recovery product.
- If you have any doubts about whether the recovery procedure is within the minimum breaking limit of your strap, DO NOT USE IT.
- It is recommended that the minimum breaking strength of the strap should be between 2 and 3 times the vehicle's gross vehicle mass.
- The strap must be suited to the gross vehicle mass of the lighter of the two vehicles used in the recovery process.
- Always drape the winch dampener over your strap while in use.
- Be aware that a strap can lose up to 20% strength when wet.
- Do not tie knots with the snatch strap.
- Never over-tighten the shackle pin. Forces exerted on the shackle by vehicle recovery can cause the pin to seize. The correct method is to tighten the pin until it seats, then back off the pin approximately 1/2 to 1 full turn.

SAFETY

- Familiarise yourself with safe operating procedures before attempting to use the snatch strap.
- Never attempt to recover a vehicle without all the necessary equipment.
- All passengers should exit the vehicle. Passengers and spectators should stand more than 1.5 times the length of the recovery strap away from vehicles engaged in the recovery. Avoid standing in the path of the vehicle performing the recovery.
- Ensure good communication is maintained between participants and bystanders at all times. This is best achieved by use of UHF radio.

CONTENTS

- 1 PC(s) BUNKER INDUST Snatch Strap (20ft)
- 1 PC(s) BUNKER INDUST Snatch Strap (8ft)
- 1 (Pair) BUNKER INDUST Bow Shackles
- 1 (Pair) BUNKER INDUST Bow Shackle Isolators
- 1 PC(s) BUNKER INDUST Soft Shackle
- 1 (Pair) BUNKER INDUST Leather Recovery Gloves
- 1 PC(s) BUNKER INDUST Snatch Block
- 1 PC(s) BUNKER INDUST Winch Dampener
- 1 PC(s) BUNKER INDUST Carry Bag

SPECIFICATIONS

- Snatch Strap (Short): 8ft
- Snatch Strap (Long): 20ft
- Snatch Strap Width: 3in
- Snatch Strap Color: Neon Orange
- Bow Shackle Color: Neon Orange/Black
- Soft Shackle Color: Neon Orange
- Snatch Block Color: Neon Orange
- Leather Glove Color: Red/Black
- Winch Dampener Color: Black
- Carry Bag Color: Black
- Snatch Strap Material: Polyester
- Snatch Strap Sleeve Material: Polyester
- Bow Shackle Material: PVC Coated Forged Iron
- Bow Shackle Isolator Material: PP
- Soft Shackle Material: UHMWPE
- Soft Shackle Sleeve Material: Polyester
- Snatch Block Material: PVC Coated Forged Iron
- Leather Glove Material: Split Cowhide Leather
- Winch Dampener Material: PVC
- Carry Bag Material: Oxford Fabric
- Breaking Strength (Snatch Strap): 32,000lbs (Single)
- Maximum Load Capacity (Bow Shackle): 4.75T (Single)
- Maximum Load Capacity (Soft Shackle): 11T (Single)
- Maximum Load Capacity (Snatch Block): 8T (Single)



USING THE SNATCH STRAP

The method for using a snatch strap is quite simple; however, improper use can cause serious damage or injury.

- The recovery vehicle should be placed within reach of the snatch strap and if possible directly in line with the direction of pull. If this is not possible due to insufficient length, two straps may be joined using the correct method. Never join snatch straps with a bow shackle, as this may become a lethal missile in the event of strap breakage.
- The strap should be unrolled and connected to an approved recovery point on each vehicle with a bow shackle / soft shackle ensuring that the strap is not twisted. Approximately 2~3m of slack strap should be left between the vehicles. NEVER attach recovery straps to vehicle fittings such as tow balls, tow bars, tie-down points or tow hooks.
- Fix the dampener to the strap approximately mid-way between the vehicles.
- Clear all bystanders from the recovery area to a safe distance.
- With communications maintained between both vehicles, the recovery vehicle should gently accelerate to take up the slack and proceed on, allowing the strap to pull out the stranded vehicle. For best results the stranded vehicle can assist by trying to drive at the same time. If the vehicle is not recovered on the first attempt, a little more speed by the recovery vehicle may be needed.
- Once free, the recovered vehicle should take care not to run over the snatch strap as damage to the strap may occur.
- Only once both vehicles are stationary and secured should the snatch strap be removed.

NOTE: Be aware that the recovery strap will be under greater load if the vehicle is bogged in mud, sand or is heavily laden.



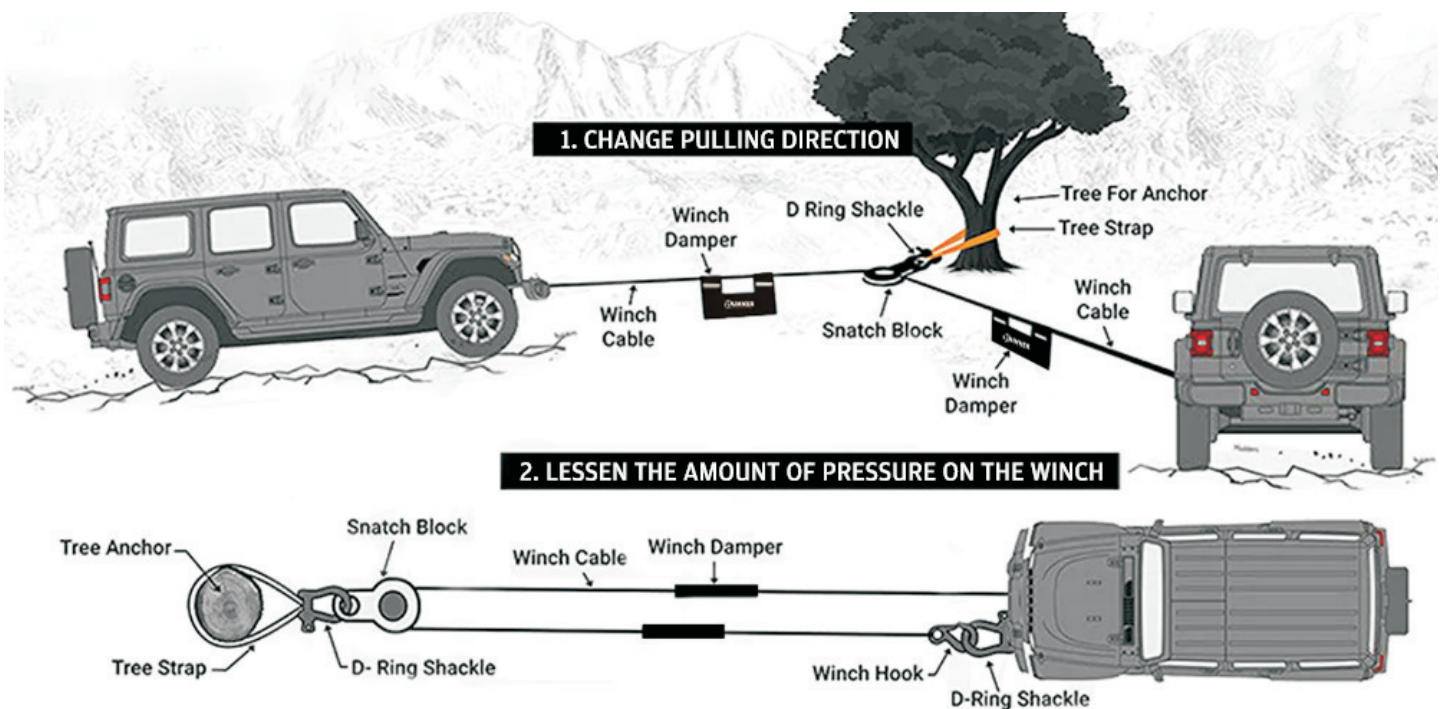
USING THE SOFT SHACKLE

1. Pass the soft shackle through the eyes of the recovery point and the recovery strap.
2. Open the eye of the soft shackle by sliding it along the rope and increasing the diameter sufficiently to pass over the knotted end.
3. Slide the eye loop over the knotted end and then pull the eye loop tight around the shackle and snug against the knotted end to create a secure connection.



USING THE SNATCH BLOCK

A snatch block has two main purposes. It can be used to alter the direction of pull if straight ahead isn't the best option. It can also be used to lessen the amount of pressure on the winch to extend its lifespan.



- To attach the snatch block to the rope, slide the plates so that they are 90 degrees apart.
- Place the rope around the pulley and realign the plates.
- Attach the pulley to the anchor point via a shackle through the side plate holes.



GENERAL CARE AND MAINTENANCE

- Inspect the entire length of any strap for nicks and cuts before and after use. If damaged, the strap may fail and should be replaced.
- Avoid kinks and twists in the webbing & keep clear of all sharp and hot surfaces.
- Always ensure your snatch block is clean. Remove any foreign matter from the working surfaces of the pulley. After cleaning a small amount of lubrication can be placed on the bearing for continuous trouble-free use.
- Inspect all bow shackles for damage. Pins that are hard to turn suggest that the shackle has been overstressed and should be replaced.
- Clean your straps in warm water with a mild detergent and allow to dry thoroughly before storage. The ingress of foreign material such as sand and grit can permanently damage the fibres of the strap.
- Never pressure wash snatch strap.
- Always coil your straps during storage.
- When storing, ensure strap is completely dry and not stored in direct sunlight or wet/humid environment.

WARRANTY

BUNKER INDUST warrants that each complete recovery kit that is purchased while this Warranty is in effect will be free from defects in materials and workmanship for a period of 1 year from the date of receiving the product from BUNKER INDUST or its authorized distributor /dealer. If it is believable to be defective during the 1-Year Warranty Period, BUNKER INDUST will, at its option, replace it with the same or similar product or will issue a refund for the defective BUNKER INDUST product.

And BUNKER INDUST will pay for the cost of shipping or transportation of a defective component.

This warranty terminates if a purchaser transfers the product to any other person. And please retain your purchase receipt for your records.

Please ensure that the BUNKER INDUST complete recovery kit should be used and maintained in accordance with warnings listed in the user manual, and should be used for the purpose for which it was designed.

THIS LIMITED WARRANTY DOES NOT COVER:

- normal wear and tear;
- fitting the product other than in accordance with the product information and any relevant vehicle safety and compliance laws, including incorrect fitting;
- using the product other than for the purpose for which it was originally designed or other than in accordance with the product information and any relevant vehicle safety and compliance laws, including unusual, improper or negligent use or misuse or overloading;
- improper repair or maintenance or failing to repair or maintain;
- alteration, abuse, acts of nature, terrorism, vandalism, collision, road hazards or adverse conditions.

If further information or investigation is required or if the claim does not meet the requirements under our warranty, BUNKER INDUST'll let you know.