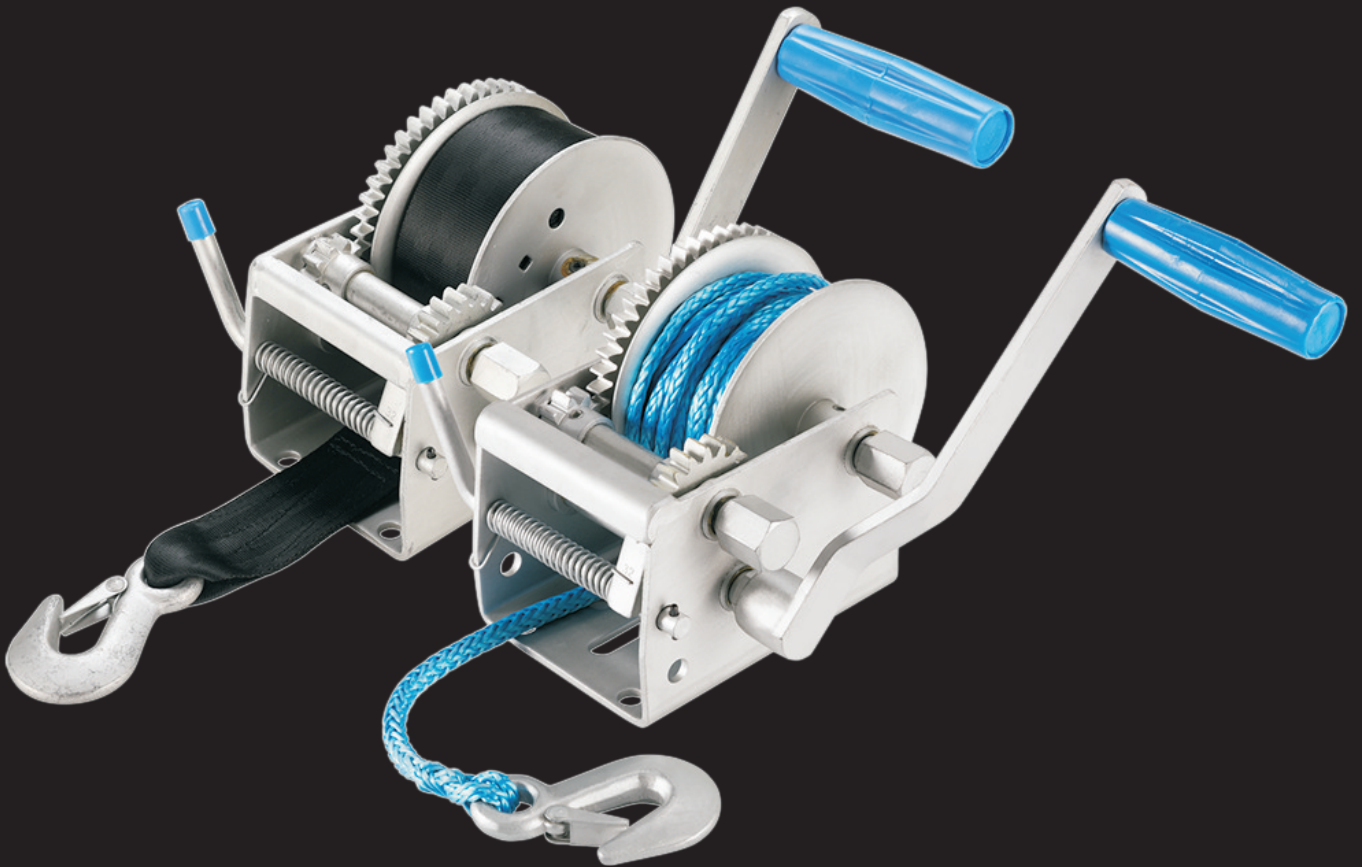


FIERYRED®
4x4 EQUIPMENT

Hand Winch USER MANUAL



SKU: HAND-WINCH-R / HAND-WINCH-B
Please read this manual carefully before use

V1.0

Fieryred, founded in March, 2016 and born of the passion to fulfill four-wheel drive lovers' demand for affordable, yet high quality 4x4 equipment, takes prides in designing, engineering and providing rock solid 4x4 products to let you rediscover the fun of off-roading.

Based in the United States, Fieryred is a professional supplier of 4x4 equipment, currently provides off-road recovery gears & tools as well as aftermarket vehicle parts that are designed to offer you ultimate experience with exceptional value.

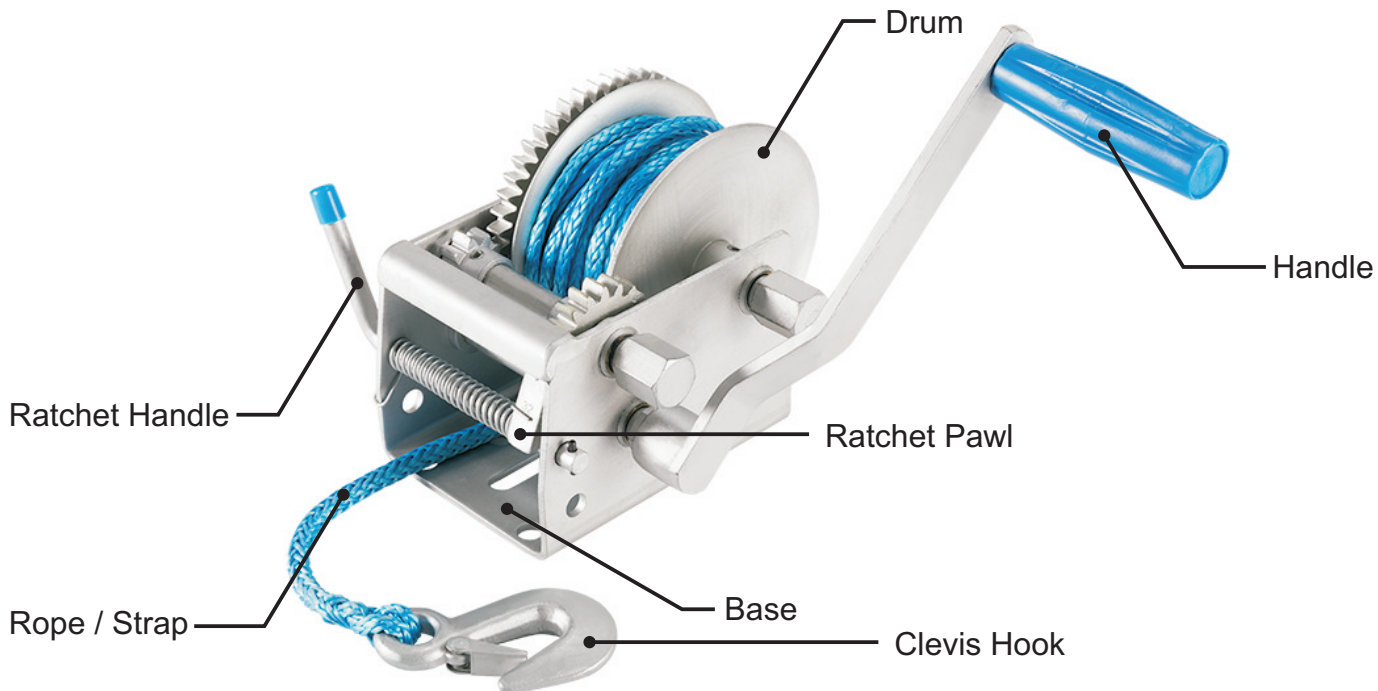
It is the passion, coupled with a continuing commitment to quality and unswerving dedication to customer, that distinguishes Fieryred from the competition. At Fieryred, we strive to excel your expectation, and permeate that conviction into every product that wears the Fieryred brand.

Wherever your passion takes you, Make Your Own Path.

WARNINGS AND SAFETY INSTRUCTIONS

- Purchaser / owner must ensure this product is installed according to these instructions. Purchaser / owner must not alter or modify this product.
- Make sure the winch is positioned so handle can rotate a full 360 degrees freely.
- Do not weld any part of the winch.
- Never stand along side the winch rope / strap.
- Operator and bystanders should never position any part of body under any portion of this product or the load being supported.
- Do not allow children to play on or around this product or the load being supported.
- This winch is designed for manual operation only and the load rating is based on an intermittent duty cycle.
- Do not use winch to move humans.
- Never exceed maximum rated capacity.
- Please note that this winch is built for horizontal pulling applications only.
- Be certain the load is properly seated in the saddle of the hook. Do not tipload the hook as this leads to spreading and eventual failure of the hook.
- Make sure the hook safety latch works properly.
- Always inspect the rope / strap and its attachment before each use to make sure it is not damaged. Never use it if it is worn, kinked, or frayed. If the rope / strap or attachment breaks, the rope / strap will whip violently, causing property damage, serious bodily injury.
- Never lengthen the rope / strap with the help of clamps or by any other way.
- Always remove kinks and slings before start pulling.
- Wear heavy leather gloves when handling the rope / strap.
- Never operate with slippery, wet, or oily hands and always maintain a firm grip on the winch handle. Do not attempt to stop a winch by grabbing the handle while in motion.
- The operator must maintain an unobstructed view of the load at all times.
- Always maintain a minimum of three (3) complete wraps of rope / strap on the drum.
- Never leave a weight supported from the winch while the winch is unattended, as another person may attempt to operate the winch, thereby creating an unsafe condition.
- Make sure that the ratchet pawl is properly engaged before attempting to change gears.
- Winches are not designed to secure boats to trailers while towing. Boat tie downs should be used for this purpose.
- Periodically check mounting hardware and tighten if necessary.
- Regularly grease the gears with EP2-grade grease for open gears.

KNOW YOUR WINCH



SPECIFICATIONS

SKU	HAND-WINCH-R	HAND-WINCH-B
Product Weight:	5.4kg	5.5kg
Frame Material:	Carbon Steel	
Frame Surface Finish:	Dacromet Coating	
Rope / Strap Color:	Blue	Black
Rope / Strap Material:	Dyneema	Webbing Strap
Rope / Strap Length:	10m	8m
Rope Diameter/ Strap Width:	7mm	5cm
Pulling Capacity:	2,000kg	3,000kg
3 Speeds:	17:1 / 5:1 / 1:1	

INSTALLATION

- Install the hand winch in a location where the load and the rope / strap can be observed during the operation, and inspection and maintenance can be conducted easily.
- Set the winch height to easy-work-height.
- Fix the winch to the installation base with bolts and nuts.

OPERATION

Let Rope / Strap Out:

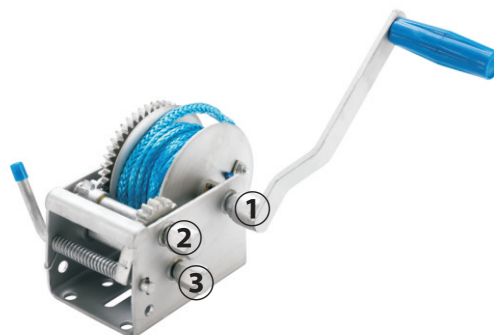
Disengage the ratchet pawl (roll the ratchet handle down) and slowly pull out the rope / strap. If you must stop before the rope / strap reaches the desired location, be sure the ratchet pawl is engaged (the ratchet handle is rolled up) to hold the rope / strap there.

Take Load In:

Be sure the ratchet pawl is engaged. As you turn the handle, make sure the rope / strap is winding onto the drum properly. If you must stop before the load is fully in, be sure the ratchet pawl is engaged and gradually release the winch handle.

Shift:

Make sure that the ratchet pawl is properly engaged before attempting to change gears. Relocate the winch handle onto a different input shaft.



Gear Ratio: ① 1:1, ② 5:1, ③ 17:1

TROUBLESHOOTING

Problem	Possible Cause	Solution
The drum does not turn when the handle is turned.	The winch is disengaged.	Make sure the ratchet pawl is engaged.
Excessive force needs to be applied to the handle.	The load to be pulled is too heavy.	Set the load down carefully and check the real weight to be pulled. The load must not exceed the limit force of the winch.
Suddenly, the handle becomes heavy to rotate.	The load may be caught on something.	Stop the operation. Restart after removing obstacles.
	The rope / strap is twisted or kinked.	Remove the twist or kink.
The winch vibrates or “whistles”.	The gears have lost their lubrication.	Lubricate the gears.



WARRANTY

Fieryled ("Manufacturer") warrants to the original buyer ("User") that its hand winch sold hereunder shall be free from defects in workmanship or materials and conform to Fieryled's specifications for this product under normal installation, use and maintenance conditions from the date sold and for the duration (the "Warranty Period") of 1 YEAR.

If it fails to operate during the limited warranty period due to defects in materials or workmanship, Fieryled will, at its option, replace it with the same or similar product, or issue a refund.

This limited warranty is provided by Fieryled and there are no other warranties, expressed or implied, except as required by law, including warranties of merchantability and fitness for a specific purpose, that are provided for herein, however all such implied warranties, if any, are limited to the duration of this specific limited product warranty. Oral statements or representations about the product do not constitute warranties.

THIS LIMITED WARRANTY DOES NOT COVER:

- normal wear and tear;
- damage through abuse, neglect, misuse, or as a result of any accident or in any other manner;
- damage from misapplication, overloading, or improper installation;
- improper maintenance and repair;
- product alteration in any manner by anyone other than Fieryled, or without Fieryled's authorization;
- malfunction or defect attributed to the use of non-genuine Fieryled parts.

REPAIR AND REPLACEMENT:

If a Fieryled product is suspected of being defective, you'll need to provide proof of purchase (e. g. a screenshot of the order) and a picture and a video of the damaged goods in their entirety to sales@Fieryled.com. If the product is found to be defective and covered by this limited warranty, the remedy is repair, replacement or refund, at Fieryled's option. A repaired or replacement product will be warranted to be free from defects in workmanship and materials under normal use. Removal, installation, or reinstallation costs are not covered by this limited warranty.

