

User Guide

Topvico Wi-Fi Wireless Alarm System
Model No.: TP-209W3-T / TP-209W5-T

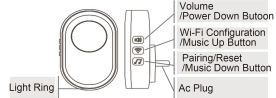


Online Manual & Help

* You can download online manual by scan above QR code (English, Español & Pycckovii Languages optional).*

At a Glance

Hub (include)



Hub
Choose an outlet where it is with a good Wi-Fi signal, push the AC plug into the outlet and press any button to power it on.

Water Sensor



Open the battery cover from here

APP

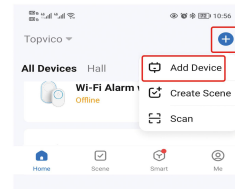


Scan the QR code or find "Smart Life/Tuya Smart" from Google Play/APP Store to get the free application for Android or iOS. Upon installation of APP on your phone, the app will guide you through registering, connecting the hub to the internet.

Network Configuration & Match

Add your hub

1. Connect your smartphone to the WiFi router, open GPS of your smartphone. (Only 2.4GHz Wi-Fi network is supported).
2. Plug hub close to your WiFi router, put water sensor beside hub.
3. Login APP, tap "Add Device" or "+".



4. Select "Sensors" tap "Alarm(Wi-Fi)"



5. Input your WiFi information, tap "Next"



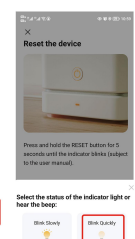
6. On your hub, press and hold the configuration button until the blue light flashes quickly, then it is ready to be connected.



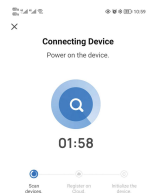
Tap "Confirm the indicator is blinking"



Tap "Blink Quickly"



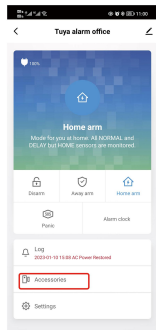
Wait the configuration finishes, tap "Done".



Note
 1. If the hub blink slowly, please press and hold the WiFi configuration button again, make sure it is blink quickly.
 2. If can not make the light blink quickly, please tap "Blink Slowly", then follow the guide of APP.

Water sensor pairing

1. Tap the hub icon in app
2. Tap "Accessories"



3. Add Water sensor

Tap "+", then put the probes of water sensor in water.



4. Select correct device type for water sensor
 In the Accessories page, tap the water sensor which you just add, choose "Water Leak", then tap "Confirm".

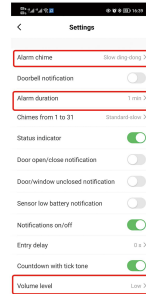


Light Ring

What you see	What it means
Blinking cyan	Somebody visit (Doorbell)
Solid green	Armed
Solid cyan	Home armed
Nothing	Disarmed
Blinking red	Alarming
Blinking yellow	Entry delay @ quickly, exit delay @ slowly
Blinking blue	Wi-Fi connection configuration
Blinking purple	Pairing/sniffer mode

Operation
Adjust Volume
 In APP tap Settings > Volume level to select the level you want
Change Tune
 In APP tap Settings > Alarm Chimes to select the tune you want
Alarm Duration
 In APP tap Settings > Alarm Duration to select the voice alarm time you want

Tips: Change one of sensors' tune, you just can change the last matched one. You'd better to select your favorite tune before match next one. Or you delete the sensor and match again.



Arm/Disarm
 You can arm and disarm your home using the remote tag or APP.
Attention: Only in arm mode, it will alarm when it is detected the water.

Power Down

To save power and turn the hub off, press and hold the Power Down Button until the light ring change to white and you hear four ticks from strong to weak. Press any button to turn the hub on.

Reset

This process resets your hub to factory settings and removes all pairings. Tap Settings > Factory reset in APP, or press and hold Reset Button until you hear two beeps and light ring change to purple, then the hub restarts.

Specifications

Hub
 Power Supply: 110/220VAC
 Backup Battery: 3.7V, 300mAh Lithium Battery
 Consumption: <100mA@normal
 Radio Frequency: 433MHz
 Wi-Fi: IEEE802.11b/g/n
Volume Levels: 5(includes mute)
 Sound Level(typical): 85dBA
 Expandable: up to 100 doorbell buttons/sensors and 10 remote tags
 Operation Temperature: -10~55°C



FAQ:

- **Q: How to make sure app get notification?**
- **A:** 1. Smartphone need connect wifi or with network of sim card.
 2. Open permission for the app in smartphone, keep app work in background of smartphone.
 3. Some smartphones can setup special notification music for different app, please try it
 4. Water Sensor under the range of wifi hub.

- **Q: Why can not connect wifi?**
- **A:** If the wifi hub connected wifi, and need change to another wifi, please delete the hub from app list first.

- **Q: How many smartphones can get notification same time?**
- **A:** The wifi hub can share to 20 app users, so 20 smartphones can get notification same time, but 1 app account only can login 1 smartphone, so different smartphone need register different app account.

- **Q: Power failure notification?**
- **A:** Yes, if the power supply of wifi hub failure, will get app notification.