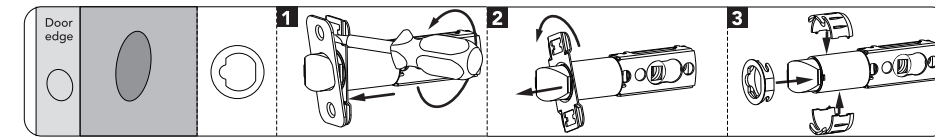
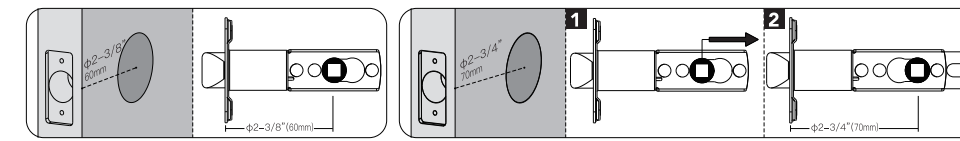


For detailed tutorial videos, please visit <http://www.hugolog.com/pages/ju05>
Please reach us at support@hugolog.com



C. Adjust backset of latchbolt.

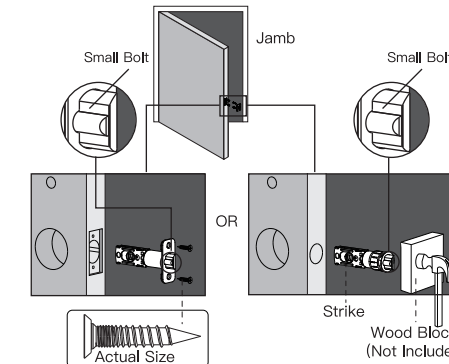
NOTE: Bolt ships with backset in 2-3/8" (60mm) position. If needed, adjust the latchbolt to 2-3/4" (70 mm). (See pictures below)



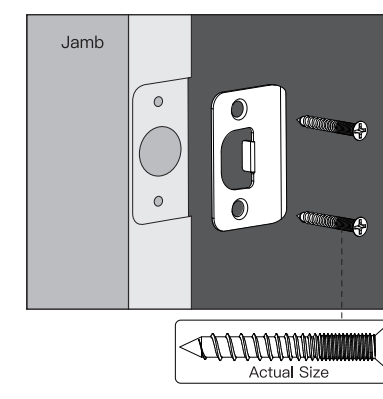
Installation

1. Install latchbolt.

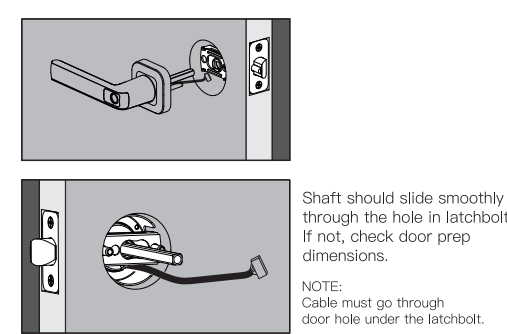
NOTE: Make sure latch angle faces door jamb.



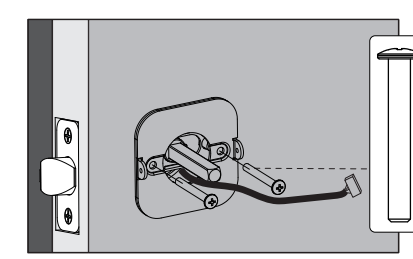
2. Install strike onto door jamb.



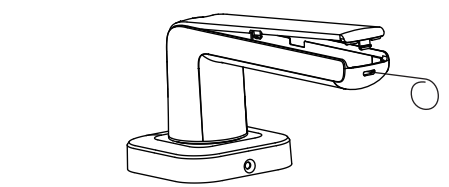
3. Install exterior assembly.



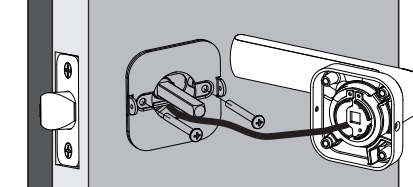
4. Position the inside mounting plate by first routing the cable and connector through the hole. Secure both assemblies using the mounting screws.



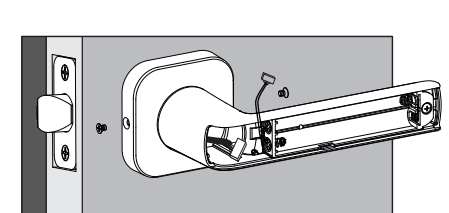
5. Remove battery cover with the provided pin from interior assembly.



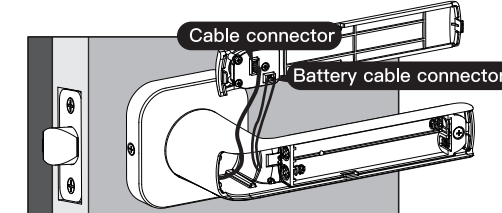
6. Routing the cable and connector through cable hole on interior assembly.



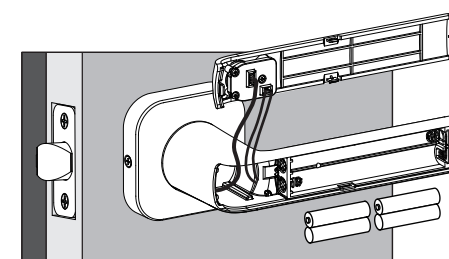
7. Install interior assembly and secure with interior assembly screws.



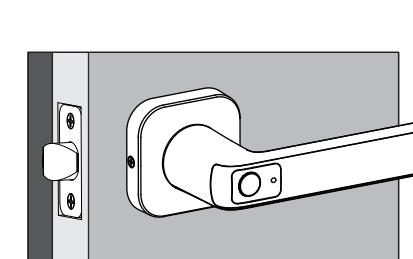
8. Insert cable connector and battery cable connector into sockets on battery cover.



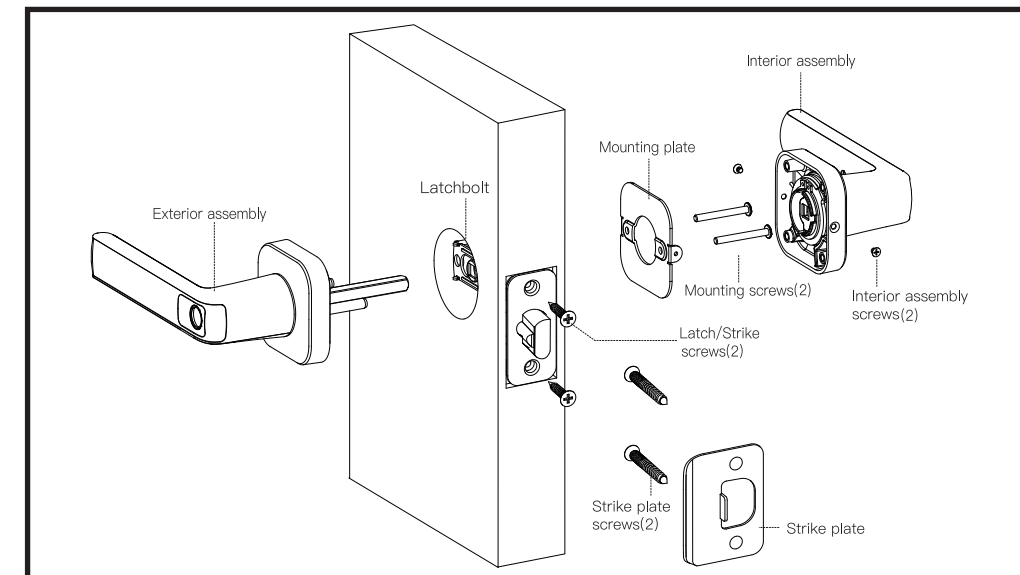
9. Install 4x AAA batteries and battery cover.



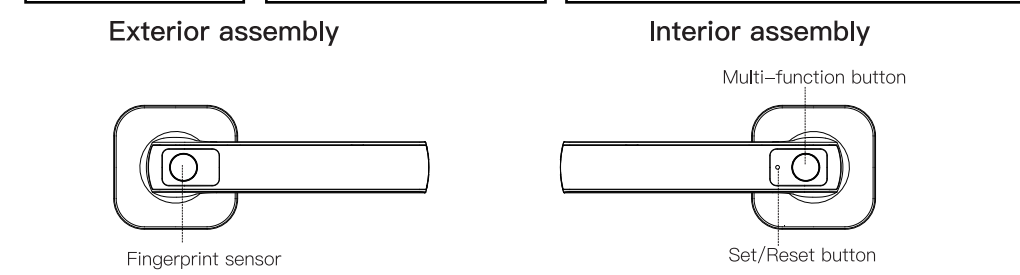
10. Installation completed.



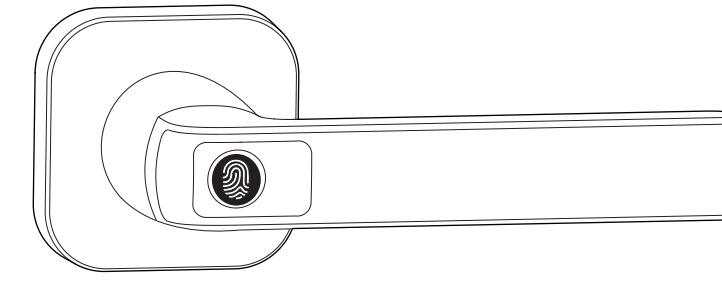
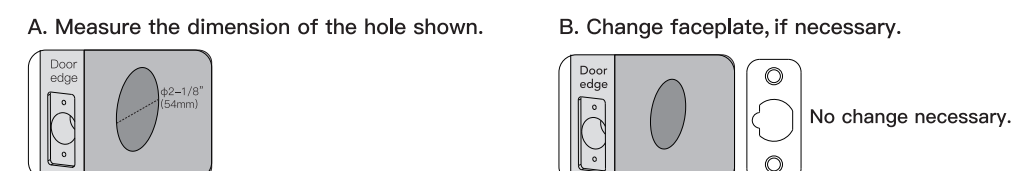
Installation Guide



Additional Parts	Tool Needed (For new door)	Lock Installation #2 Phillips Screwdriver
Optional Bolt Faceplate	Door prep 1. 2-1/8" (54mm) hole saw 2. 1" (25.4mm) boring bit 3. Chisel & Hammer	Important notice: Make sure your door is prepared prior to installation. Please refer to the provided template for drilling if needed.



Preparing for Installation



For detailed tutorial videos, please visit <http://www.hugolog.com/pages/ju05>
Please reach us at support@hugolog.com

Definition

- Display Mode**
Lock can be unlocked by any fingerprints when lock in factory default settings (no fingerprint registered).
- Normal Mode**
The lock can be unlocked by registered fingerprints, and locks automatically after 5 seconds.
- Manual Mode**
In manual mode, the lock will keep in unlocked position to allow access without fingerprint verification.
- Silent Mode**
All voice guide will be muted in silent mode.
- Away Mode**
In Away mode, all fingerprints are restricted except Master user and user who activates Away Mode.
- Master User**
First 2 fingerprints registered are Master user fingerprints. It could be used for lock settings, Master user fingerprints can unlock the door any time in any mode.
- System Lockdown**
If wrong fingerprint attempts reach 10 times, the system will lock down for 3 minutes.

Programming

- Enter Setting Mode**
If the lock is in default setting, click the set button with provided pin to enter setting mode. When Master Fingerprints are registered, click the set button and verify Master fingerprint is required.
- Register Master User Fingerprints**
To register Master user fingerprint 1: Click the set button to enter setting mode, and place the finger on the fingerprint sensor following voice guide.
To register Master user fingerprint 2: Click the set button, verified the Master user fingerprint 1, then register Master user fingerprint 2 following voice guide.
Note:
1. Both Master User Fingerprints can be used for settings.
2. Master User Fingerprints can unlock the door in any mode.
3. Time expires if no action in 5 seconds after clicking the set button.
4. Away mode can be disabled by Master User Fingerprints.
- Register User Fingerprints**
1. Click the set button, verify Master User fingerprint to enter setting mode.
2. Place a finger on fingerprint sensor following voice guide.
Note:
1. Maximum 20 user fingerprints can be registered.
2. Same fingerprint can not be registered twice.
3. Time expires if no action took in 5 seconds.
- Delete User Fingerprint**
The only way to delete User fingerprint is to reset the lock factory settings, it will delete all user fingerprints and Master User fingerprints.
To reset the lock, please press and hold the Reset button for about 5 seconds until you hear the voice prompt.

- Language Settings**
English as default language
1. Click the set button and verify Master User Fingerprint to enter setting mode.
2. Click Multi-function button on interior assembly to change Voice guide language between English and Chinese.
- Manual Mode**
Press and hold multi-function button for 5 seconds to enable/disable manual mode.
In Manual mode, you can click multi-function button once to lock the door from inside.
- Away Mode**
Place and hold registered fingerprint on fingerprint sensor for 5 seconds to enable away mode.
Lock in away mode can be unlocked by Master User fingerprints or the registered fingerprint which enabled away mode.
- Restore to Factory Settings**
Press and hold the set button for 5 seconds until hearing voice guide to reset the lock to factory settings.
Note:
All User fingerprints and Master User fingerprints will be deleted after resetting.

LED Indicator Description

- Solid blue light:** Setting mode
- Solid green light:** Register/Verification successful
- Yellow light:** Low-battery status
- Red light:** Register/Verification failed, or system is locked down
- Purple light:** Away mode enabled