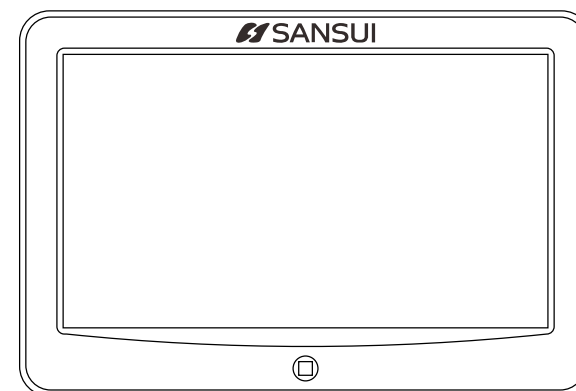




# 安裝手冊

INSTALLATION MANUAL

型號: SA-HM901



## 車載頭枕式液晶顯示器

CAR Headrest Monitor

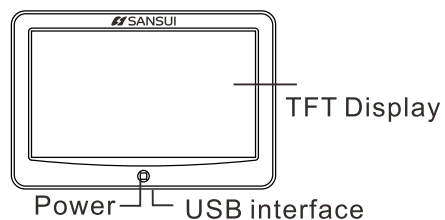
## Product Presentation

Thanks you for purchasing our SANSUI series In-car headrest monitor, please read this manual carefully which can help you make the operation and reliability acheive the best condition.

## Features

9" AV Headrest LED Monitor,  
With USB Charger For Universal Charge,  
NTSC/PAL Auto Switch,  
Resolution:800xRGBx480 Pixels,  
Input: Two Video Input,  
Power Supply: DC12V,  
Power Consumption:4W

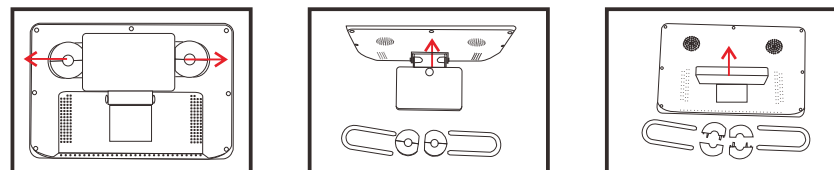
## Button panel



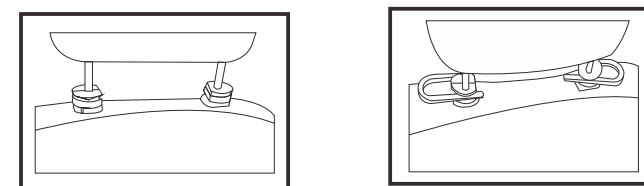
Power :power switch; In working condition, short press power to switch video, long prees power to turn off the machine.

USB Interface: General USB charging interface

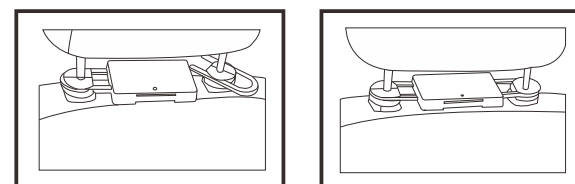
## 安裝說明



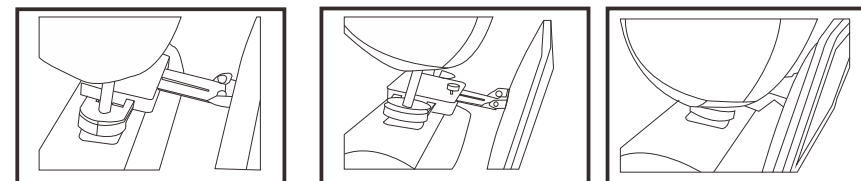
1、拆出包裝好的成品機，把支架塑膠件上的銅螺杆扭下，拔掉支架塑膠件，並將支架兩邊的U型鐵片拔出，取出U型鐵片的塑膠圈。



2、將原車頭枕升高，根據原車頭枕的鐵杆直徑選擇合適的塑膠圈，並拔開塑膠圈，將拔開的塑膠圈夾住原車頭枕的鐵杆（塑膠圈的平面朝兩個鐵杆的中間）並插入U型鐵片先固定兩邊的塑膠圈。

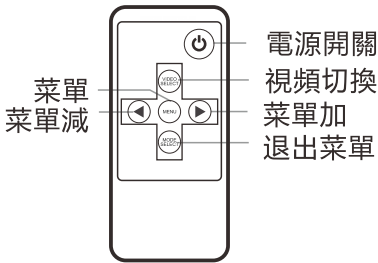


3、將支架塑膠件放到兩鐵杆之間同時推動U型鐵片，插入到支架塑膠件，固定好支架塑膠件之後移動支架塑膠件，調到兩鐵杆中間位置。

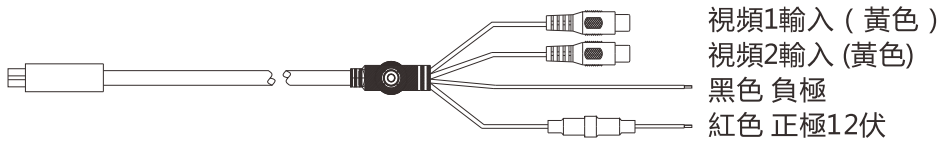


4、將機器托起，把機器後殼上的五金鐵片插入到塑膠件裏面並調整好觀看角度的同時扭傷銅螺杆並固定緊，然後將原車頭枕降低到適當的位置。

遙控器



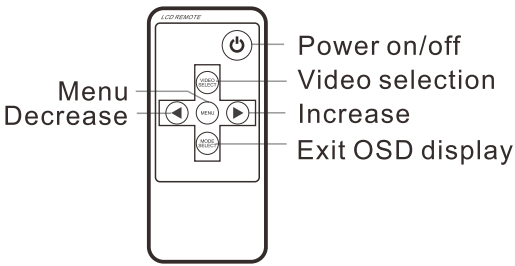
接線圖



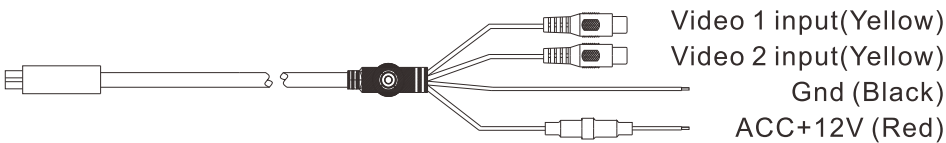
配件

名稱	數量
1. 電源線	2條
2. 支架	2個
3. 備用安裝圈	10個x2
4. 說明書	1本
5.遙控器	1個

REMOTE CONTROL



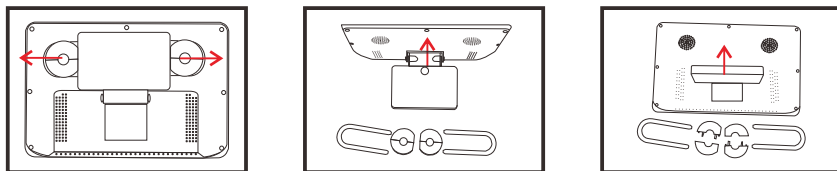
AV Cable



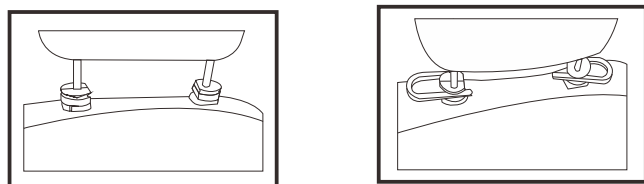
ACCESSORIES

Description	Quantity
1. Power Cable	2PCS
2. Monitor Bracket	2PCS
3. Backup Circles	10PCS x2
4. Users Manual	1PC
5.Remote Control	1PC

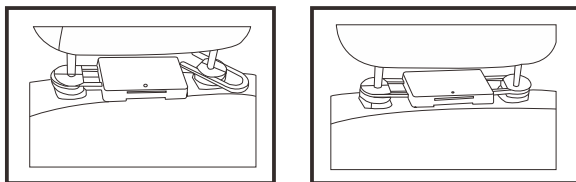
## Installation



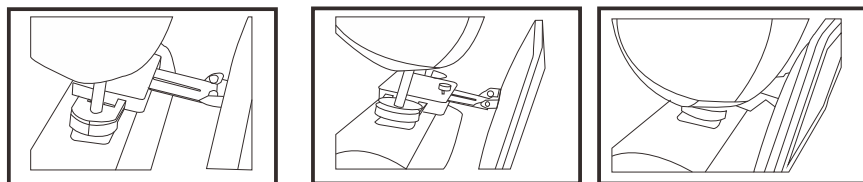
1、Take out the machine, remove the screws, Unplug support plastic parts and take off the U-shaped sheet iron on both sides of the bracket, then pull out the plastic ring.



2、Rising the original headrest, then according to the diameter of the original car headrest iron pole to choose the right plastic ring and apart it and grip on the original car headrest irons (the ring plane toward to the middle of the two iron), then insert the U-shaped iron plats to fixed the two plastic ring.



3、Put the plastic bracket parts in between two iron plates, at the same time, push the U-shaped iron plates and insert them into plastic bracket, and adjust it to make sure it be in the middle of two iron poles.



4、Hold up unit, insert the metal plate in black of the unit into plastic bracket parts, then adjust it to the right angle and fix it tightly, at last lower the original car headrest to the appropriate position.

## 公司產品介紹

感謝您購買SANSUI系列車載頭枕式液晶顯示器，（以下簡稱顯示器），請仔細閱讀本手冊可幫助您將顯示器的使用性能和可靠性能調整到最佳狀態。

## 功能特點介紹

9英寸AV頭枕液晶顯示器

兩路視頻輸入

帶通用USB充電接口

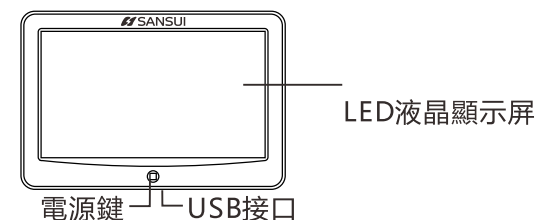
電源：直流12伏

最大功率：4瓦

電視制式：NTSC/PAL自動識別

分辨率：800xRGBx480

## 面板按鍵功能



電源鍵：電源開關；在工作狀態短按視頻切換，長按3秒關機；

USB接口：通用USB充電接口