

# ZUMIMALL<sup>®</sup>

Get Smarter about your Security

QUICK START GUIDE



**Q1Pro** BATTERY POWERED CAMERA  
WIRELESS | WIFI | OUTDOOR | SECURITY

[Q1pro@zumimall.com](mailto:Q1pro@zumimall.com)



# Warranty Service

Thanks for your shopping and trust.

We are keeping to optimize product and improve our **lifetime customer service** to offer you a better shopping experience. If you have any problems, please feel free to **send us an E-mail**. We will solve your problems **within 24 hours**. Besides, your advice or suggestions will be much appreciated and welcomed.

Register via link below to get **3 Years Warranty** Extension.

<http://bit.ly/zuReg>

## **Product Service**

Email: Q1pro@zumimall.com

Distributor: distributor@zumimall.com

Cell/iMessage/SMS/Whatsapp/Wechat: +86 18938687483

## **More About Us**

Official Web: [www.zumimall.com](http://www.zumimall.com)

Facebook: [www.facebook.com/zumimalloffic](http://www.facebook.com/zumimalloffic)

Amazon Office Store: [www.amazon.com/zumimall](http://www.amazon.com/zumimall)

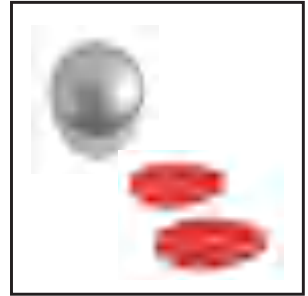
# INDEX

# PAGE

---

1. What's in the Box -----	P1
2. Product Diagram -----	P2
3. Download & Install App -----	P3
4. Account Registration -----	P4
5. Add Camera to App -----	P4.5
5.1 Preparation Before Connection -----	P4
5.2 Connect Camera to App -----	P5
6. Camera Installation -----	P6
7. Monitoring Area -----	P7
8. Important Notes -----	P7
9. Device Menu -----	P8
10. Camera Settings -----	P9
11. PIR Body Detection -----	P10.11
11.1 Body Detection Alert Setting -----	P10
11.2 Alarm Notifications -----	P11
11.3 Records Playback & Delete -----	P11
12. Two-Way Audio -----	P11
13. Battery Management -----	P12
14. Multi Device Management -----	P12.13
15. Reset -----	P13
16. Trouble Shooting -----	P14.15

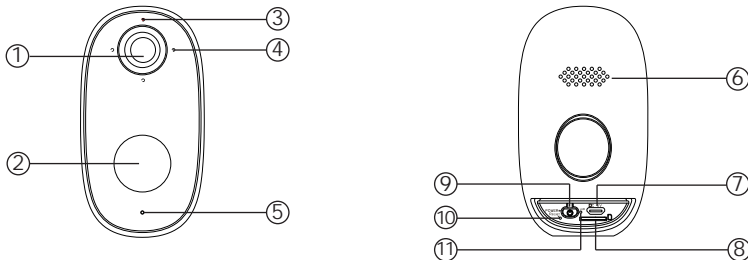
## 1. What's in the Box:



ZUMIMALL Battery Camera\*1  
Iron Ball Wall Mount\*1  
Quick User Guide\*1  
USB Cable\*1

Outdoor Metal Mount\*1  
Double-Sided Adhesive\*2  
Screws Set\*1

## 2. Product Diagram:



- ① Camera Lens
- ② PIR Sensor
- ③ LED Indicator
- ④ 3 IR Lamps

- ⑤ Microphone
- ⑥ Speaker
- ⑦ USB Port
- ⑧ Micro SD Card Slot

- ⑨ Power Button
- ⑩ Reset Hole
- ⑪ Charging Status

Power Button	Keep pressing for 5-10 seconds to power on/power off
Reset Button	Keep pressing for 5-10 seconds to reset and restart
Blink Slowly in Red	Awaiting Wi-Fi connection, ready for adding devices
Blink Fast in Red	Wi-Fi connecting
Solid in Red	Network problem
Solid in Blue	Wi-Fi connected, camera running normally
Blink Slowly in Blue	AP mode

## 3. Download & Install App :

Download ZUMIMALL App from Google Play™ or App Store™.

Or scan the QR codes as below, with QR code scanner in your smart phone.

**NOTE:** Google Play™ is a trademark of Google Inc.

App Store™ is a service mark of Apple Inc.



iOS



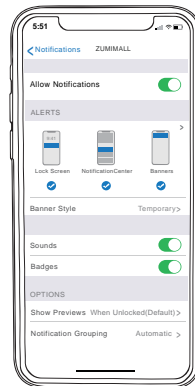
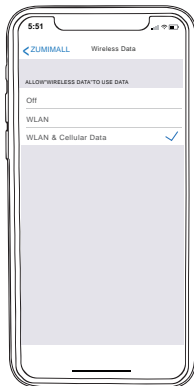
ZUMIMALL



Android

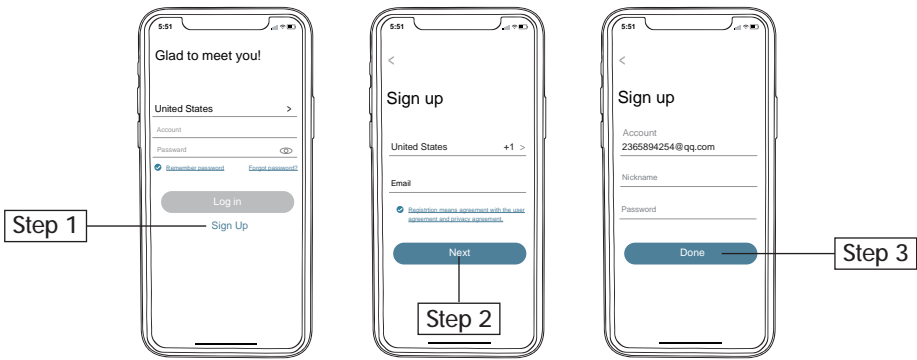
**\* Tips:** Please turn on both of the following permissions.

1. Allow ZUMIMALL to access mobile cellular data and wireless LAN, otherwise it will fail to connect the camera.
2. Allow ZUMIMALL to receive pushed messages, otherwise the phone will not receive alarms when motion is detected.



## 4. Account Registration :

New user needs to sign up 'ZUMIMALL' App with email. Click 'Sign up' to create a New Account and follow the steps to complete registration.



## 5. Camera Setup :

### 5.1 Preparations for connection

5.1.1 Insert a Mirco SD Card into the camera to save video clips(Card not included; Up to 128G)or you can start the 7-day free cloud service. Without an SD Card or cloud service, no video will be saved.

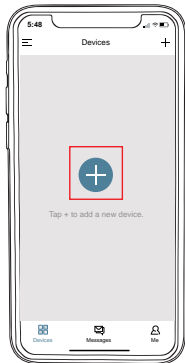
5.1.2 The camera only works with 2.4G Wi-Fi, it is not compatible with 5G.

5.1.3 While connecting, stay close to the router.

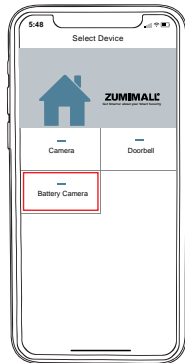




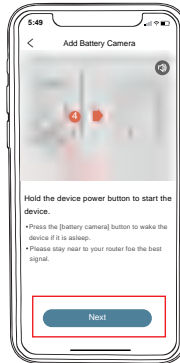
## 5.2 Connect Camera to App



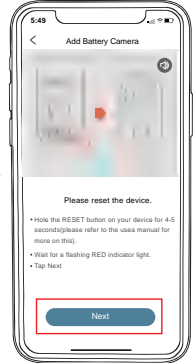
Tap '+' to Add Device



Select 'Battery Camera'



Tap 'Next'



Reset it and Tap 'Next'



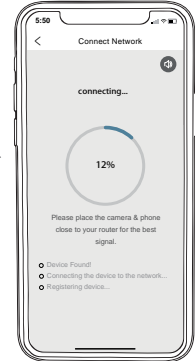
Input Wi-Fi Password



Prepare the Scanning



Scan QR Code When Indicator Flashing Slowly in Red



Finished Installation When Reaches 100%

## **6. Camera Installation:**

### **Magnetic Ball Holder**

Step 1:

Choose desired location for camera housing installation. Verify mounting structure and surface is capable of supporting the camera. Select a flat, clean, and indoor surface, paste the bracket mount on where you want to install the camera with a double-sided adhesive.

Step 2:

Leave the fasten bracket for at least 24 hours before you connect the camera with the bracket.

Step 3:

Adjust the viewing angle of the camera.

**\*Tips:** For your safety, please fasten your camera on a flat, clean, and indoor surface. If the location is undesirable (outdoor, rough, wooden, cement or ceramic tile surfaces), please follow the instruction below.

### **Outdoor Metal Mount**

Step 1:

Fix the bracket to where you want to install the camera with the supplied screw.

Step 2:

Connect the camera with the Joint Lock connected to the bracket, and secure the Joint Lock to fix.

Step 3:

Adjust the viewing angle of the camera.

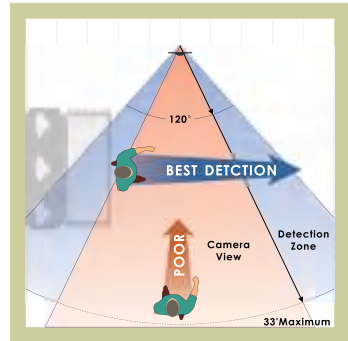
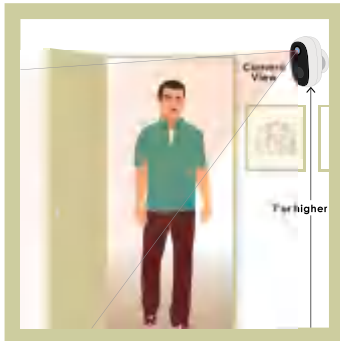
**\*Tips:** Secure the Joint Lock tightly to avoid the camera dropping down.

Elevate your camera. Mount your ZUMIMALL motion detection camera at least 7 feet(2 meters) above the floor and aim it slightly downward for the best sensor performance.

## 7. Monitoring Area :

It is not suggested to install the camera vertically towards the moving objects, otherwise it may not detect the motion events or cause delay.

It is suggested to make the angular between PIR and detected objects more than 10 degrees. ZUMIMALL's motion sensor is much more sensitive to side-to-side movement across its field of view than to movement directly toward or away from the camera.

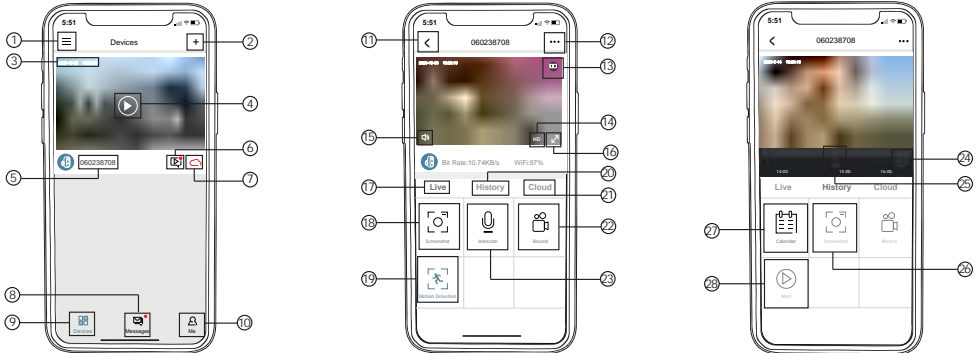


## 8. Important Notes for Reducing False Alarms :

⚠ To reduce false alarms, please note that:

- Do not install the camera in a position facing strong lights/mirror/window/swimming pool.
- Do not place the camera too close to any angel with busy traffic.
- Recommended distance between the camera and motion objects is within 10M (32ft).
- Stay away from the outlets, including air conditioner vents, humidifier outlets, the heat transfer vents of the projectors, etc.
- Keep the camera at least 1 meter away from any wireless devices to avoid interference, such as microwave stove, Wi-Fi routers and etc.

## 9. Device Menu:



1	Device List	15	Volume On/Off
2	Add Camera	16	Full Screen
3	Real Time	17	Preview
4	Live View Button	18	Screenshot Button
5	Camera Name	19	Body Detection On/Off
6	History Playback	20	Notification History
7	Cloud Storage	21	Cloud Storage
8	Messages	22	Record on to Phone
9	My Device List	23	Two-Way Talk
10	Personal Homepage	24	Zoom
11	Quit Live Viewing	25	Time Bar
12	Setting Manual	26	History Screenshot
13	Battery Status	27	Alarm Record Album
14	HD/SD Switch	28	Date of History Record

## 10. Camera Settings :

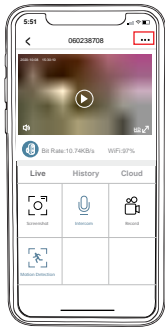


\*Tips: The person to be shared must register his/her own account in APP.

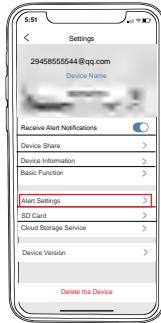
## 11. PIR Body Detection :

### 11.1 Body Detection Alarm Setting

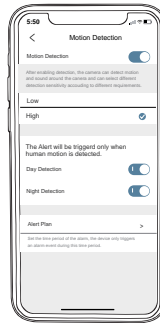
PIR 'Body Detection' is default to be on 'High' level. But it is adjustable. Please refer to the pictures below.



Tap on '...'



Select 'Alarm Setting'



Set it up

Sensitivity	Detecting Distance (For moving and living objects)
Low	Up to 5 meters (16ft)
High	Up to 10 meters (32ft)

\*Tips: Higher sensitivity offers longer detection distance and more alarms.

## 11.2 Alarm Notification

This camera is not designed for 7x24 full day recording. It is only triggered when body motion is detected. Here are system's reactions:

11.2.1 Alarm notifications with sounds from APP.

11.2.2 Pictures/videos automatically stored in SD Card or Cloud.

## 11.3 Records/Playback/Delete

11.3.1 On 'MESSAGES' page, click 'Alarm Messages', you can view all the records listed.

11.3.2 Click the following buttons to playback or delete.

11.3.3 All screenshots or manually recorded videos on live/history/cloud page will be saved in Pictures & Videos. Files here can be saved in your phone Album or shared to others directly.



## 12. Two - Way Audio:

Step 1: Activate the audio option.

Step 2: Press and hold the intercom button to speak.

Step 3: Release the button to listen.



## 13. Battery Management :

13.1 The camera has a built-in 10000mAh 27100 battery, which can be used for 3-4 months, assuming the camera wakes up 15 times per day and plays video for 10 minutes.

**\*Tips:** The battery durability depends on how frequently the camera is woke up. The more it wakes up, the faster the battery level is consumed. It is recommended to lower down the 'Body Detection' sensitivity or turn it off occasionally.

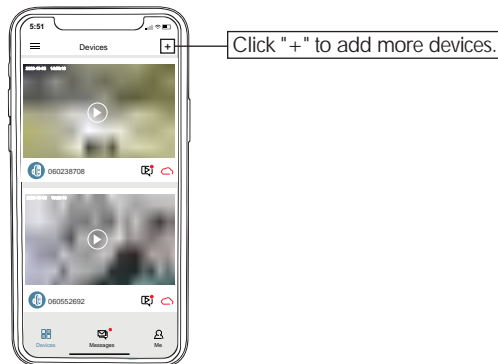
13.2 When the battery level is less than 20%, the APP will send you reminding messages for charging in time.

13.3 Charge the camera with DC 5V1A/2A phone charger, until it is fully charged after 6 hours.

PS: (Adapter Not included)

## 14. Multi Device Management :

### 14.1 Multi Camera Management





## 14.2 Multi-User Sharing

Notice: One App account (A) can't login on multiple devices at the same time. One camera can't be connected to multiple App accounts either. But camera can be shared form A to B account.

Step 1: Create another new APP account (B) and login on another Phone.

Step 2: Click 'share' on the main phone (A account phone)

Step 3: Use A to scan QR code or Input account ID of B.

Step 4: Accept sharing on B account and refresh page to check

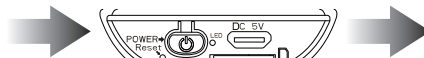


Refer to the Video

## 15. Reset:

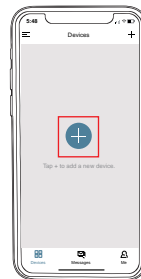


Keep pressing to remove device



Reset Hole

Press the reset button for 3-5s until hear the 'Boogu' sound



Reconnect as before...

## 16. Trouble Shooting:

NO.	Description	Solution
1	Unable to Connect	Check your Wi-Fi name and password Ensure your Wi-Fi is 2.4G. Not support 5G Ensure your camera and phone close to router for set up
2	Reset	Keep pressing the reset button for 3~5 seconds Hear 'Boogu' LED blink slowly in Red
3	Change to a New Network	Remove the camera in ZUMIMALL APP Press the reset button to factory setting Re-conenction
4	No person on Alarm Videos	Adjust camera sensitivity to 'HIGH'. The moving objects may appear from the corner of camera coverage, please adjust the lens angle.
5	Frequent Alarm	Adjust the camera alarm sensitivity to 'Low'
6	No Alarm when someone passes by	Make sure motion detection is turned on. Ensure motion happens beyond the range of PIR monitoring area
7	No Alarm Push	Make sure Notification is turned on from ZUMIMALL and phone
8	No Alarm Video	Make sure insert a SD Card or activate Cloud Service. Click triangle button to play videos.
9	Device Offline	Charge the camera and reconnect it. Ensure the Wifi signal strength is good as above 75%.
10	Battery Durability	Reduce frequency of Motion Detection, Two-way talk, and frequency of viewing Live Feeds

11	Unable to Charge	Charge at least 8-16 hours with a 5V 1A/2A phone charger. LED turns to be red means your camera is charging correctly. Make sure USB power cable and the phone charger both work well.
12	ZUMIMALL APP Flashback	Phone system version is too low or too high.
13	Unable to Register Account	Make sure to select correct country.
14	Unable to Add Friend	Your account and friend's account must be in the same country. For example, accounts in Europe and America cannot share with each other.

Please Email us for Better Solution  
before returning any unqualified product to Amazon

[Q1pro@zumimall.com](mailto:Q1pro@zumimall.com)

**THANK YOU**



尺寸宽度140MM\*高度140MM 128G 铜版纸 双铜