

8 inch Face recognition attendance
machine

Operation manual

ITEM: HL-08RLS 8inch face recognition attendance &
temperature device (Human recognition)

Version date: 2020.3.20

Level: A grade



Contents

1. Products description and specification

2. Products introduction

2.1 Products item number

2.2 Products dimension

2.3 Products specification

3. Installation settings

3.1 installation

3.2 Interface

3.3 Interface customization

4. Software operation

4.1 system structure

4.2 software platform setup

4.3 FAQ

1. Product description and specification

The Android platform is currently the most popular operating system and is known for its outstanding openness. And its combination with digital signage can bring people more imagination. The development of the digital signage industry to this day can be described as the division of labor, the industry, and the application. The traditional digital signage is no longer sufficient. The open platform enables closer cooperation between different manufacturers in the industry chain, more comprehensive control of details, realization of content as the king, and service-oriented philosophy, and building a truly customized and personalized service for customers platform.

After the computer based on the Android platform is integrated into the terminal of the information distribution system, customized applications for specific occasions can be realized, and basic information advertising functions are provided. The customized interactive touch query function and the game entertainment function are integrated into one, making use of the compactness of the tablet computer. Easy to move, Flexible features, open up new applications in the field of mobile digital signage, and meet personalized customer needs. For example, the electronic menu system can be applied to hotels, high-end restaurants, KTV bars, etc., and has an intuitive style query of dishes and drinks. Function introduction and so on. Features such as discounts, discounts, and signboards can be recommended to customers through the function of advertising, with a direct order function. It can also be used as a customer's entertainment terminal. You can play small games or watch movies and videos before meals. Meet the entertainment needs of customers' extra time: In addition to applications in hotels and restaurants, the platform is also targeted at personalized application markets in many industries such as hospitals, automobiles, real estate, and tourism.

2. Product introduction

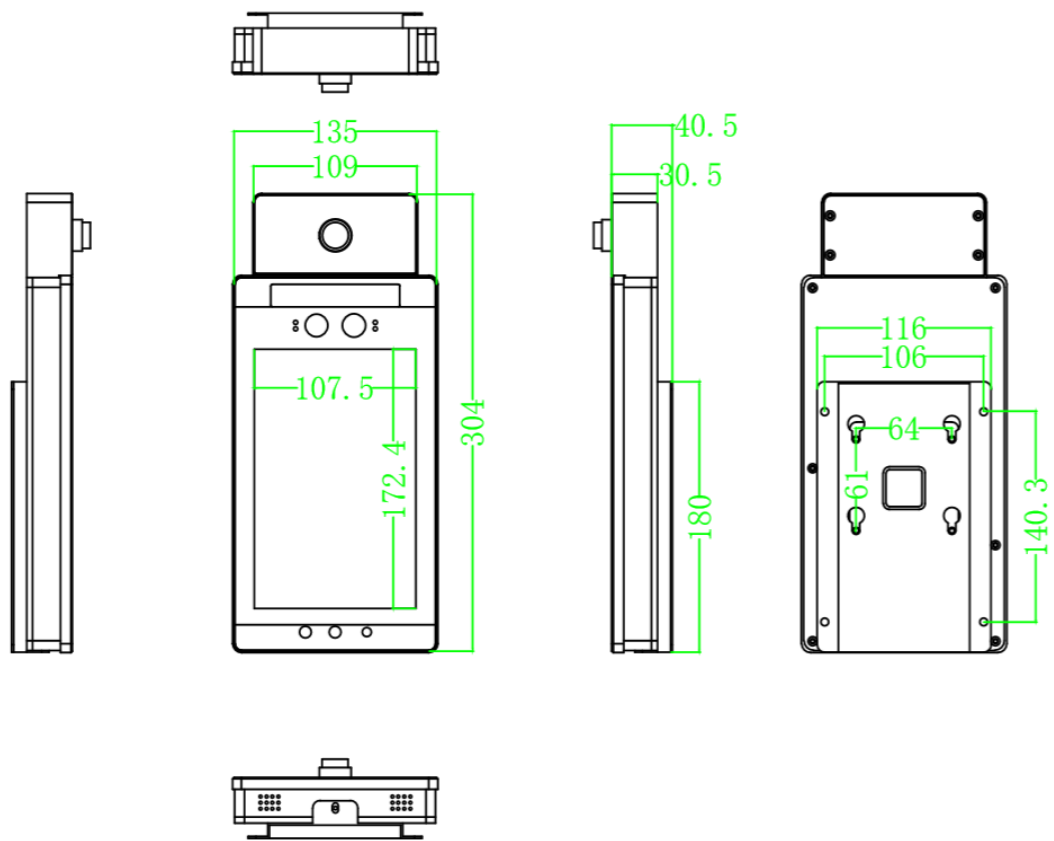
HL-08RLS vertical temperature measurement face set adopts management module and adopts Rockchip RK3288 / 3399 hardware platform, equipped with industrial binocular camera and face biometric technology, as well as infrared human temperature measurement module, and supports ID cards Card readers, fingerprint readers and other peripheral expansions can be applied to gate passages and access control attendance to achieve safe and efficient access control for personnel.



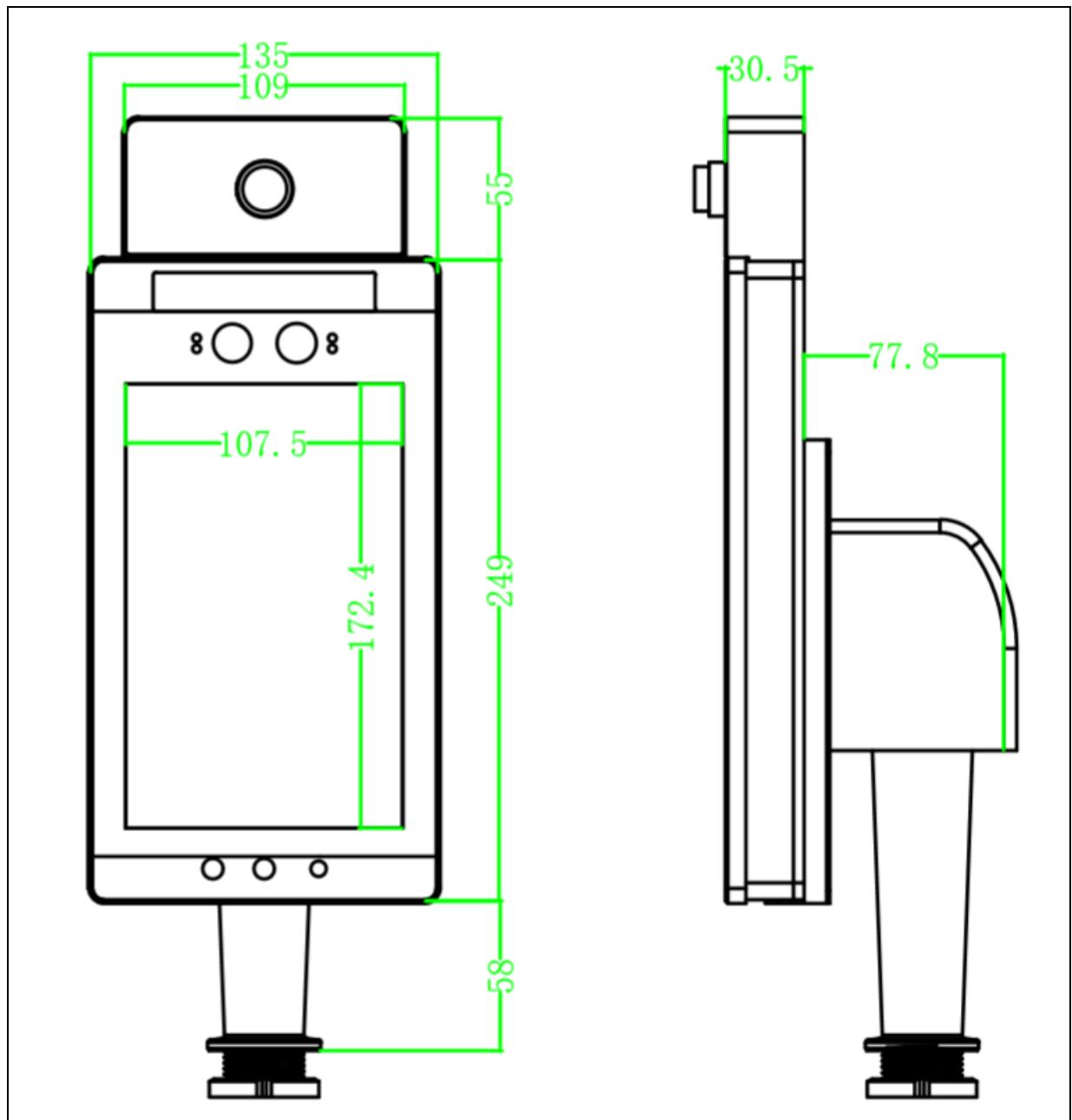
ITEM NUMBER: HL-08RLS 8inch face recognition temperature attendance machine

8inch outlet

8inch dimensio

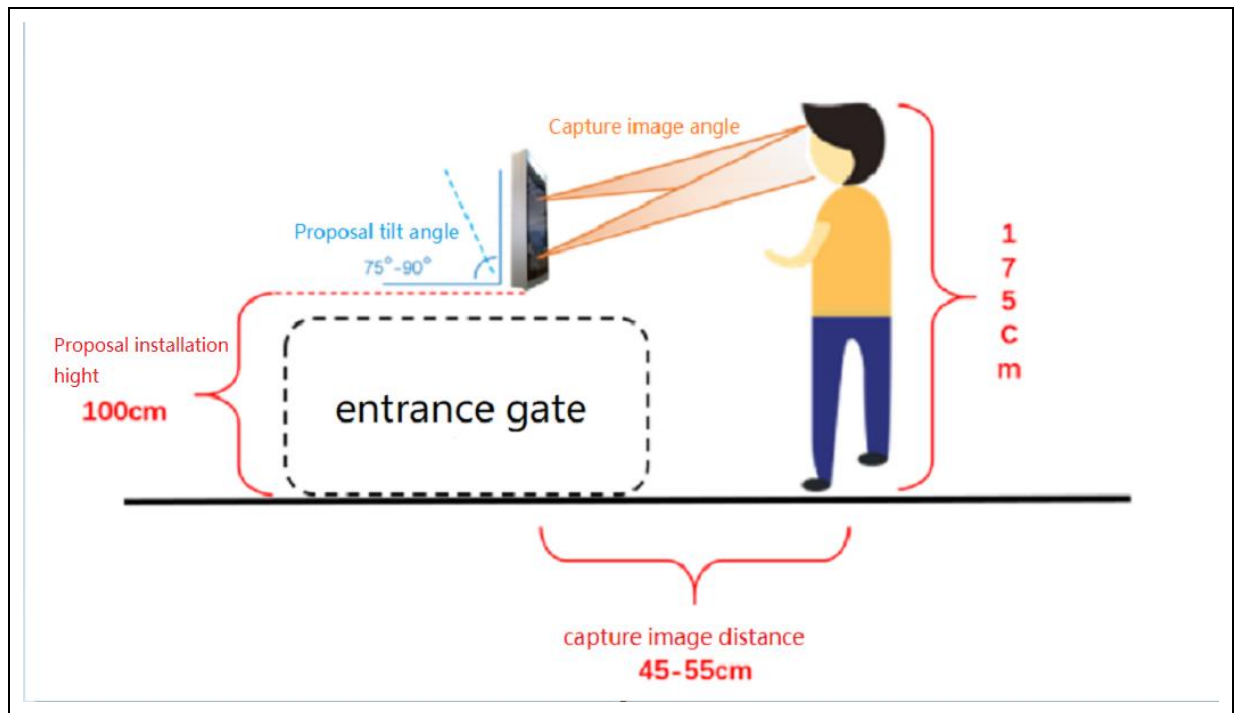


Wall mounted support



Hanging system support

Do not broke the cables when the machine is installed. Please pay attention to the installation height and angle. It is recommended that the installation height is no less than 100cm, and the recognition distance is maintained between 45-55cm. The tilt angle of the panel can be adjusted according to the actual installation height and recognition distance. It is recommended to maintain between 75 ° -90 ° , please be well noticed following picture.



2.3 Products specification and configuration

Parameters		
Products name	8inch face recognition temperature attendance machine	
Item number	HL-08RLS	
LCD panel	BRAND OF LCD	AUO
	DISPLAY AREA	172.6 (H) *108 (V) mm
	DISPLAY PROPORTION	16: 9
	Backlight	LED
	Resolution	1280*800
	Brightness	250cd/m ²
	Contrast	2000: 1
	Response time	5ms
	Pixel	0.4845 (H) *0.4845 (V) mm
	Color	16.7M
Function	CPU	Quad core HL-3288 1.8G main frequency A17core
	Memory	Upto 2GB
	Storage	8GB
	Video decoding	Support wmv、flv、ts、mp4 等
	Picture format	Support bmp、jpeg、png、gif

	Audio output	10WX2
Camera interface	USB	Dual camera 500million wide-angle camera
Infrared thermal imaging module	Temperature inspect alarm	Support human body temperature inspect alarm (temperature inspect configuration can be setup)
	Human temperature test	support
	Temperature test distance 1 meter	Temperature accurate test $\leq \pm 0.3^{\circ}\text{C}$
	Test degree $10^{\circ}\text{C}\sim 42^{\circ}\text{C}$	Thermal imaging 32 X 32 $^{\circ}\text{C}$
	Temperature test normal passing	support
External port	internet	Ether, wifi
	Port	1*USB
Power supply	Power pins	1channel power supply output which it support different countries
	Power working voltage	AC220V, 50/60Hz
	Maximum power voltage	15W
Working environment	Temperature	$-20^{\circ}\text{C}\sim 40^{\circ}\text{C}$
	Humidity	10-90%RH
Hardware information	Dimension	238.24*128*34.5mm
	Pakcing size	Products body size:300*160*40mm
	Weight	1.45kg
	Spare parts	Installation screws
	Installation solution	Support entrance gate installation

cpu	Rockchip RK3288 ARM 6cores 64digit CPU, main frequencel.8GHz Based big.LITTLE over the dual core structure, Cortex-A72(big core)+ quad core Cortex-A53(small core)	
GPU	Mail-T860 GPU MP4 Quad core GPU supportOpenGL ES1.1/2.0/3.0/3.1,OpenVG1.1,OpenCL,DX11, support AFBC	
Memory	DDR3 2G	(Max. support 4G)
Embedded storage memory	eMMC 8GB	(16G/32G/64G/128G option)
	TF Card expandable	(option expandable SSD)

Internet	Support ethernet10/100/1000Mbps, support Ethernet。
	Support 2.4GHz/5GHz dual frequency WiFi, Wi-Fi 802.11b/g/n/ac protocol.
	Support Bluetooth function,V2.1+EDR/Bluetooth 3.0/3.0+HS/4.1/BLE
	Support 4G function, LTE-TDD/LTE-FDD/TD-SCDMA/EDGE/GPRS/GSM (option)
Display interface	1* eDP port (eDP1.3 , 4lanes with 5.4Gbps), support 3.3V/5V/12V power supply 1* LVDS port (single channel/dual channel, 6digit/8digit) , support 7"-108" lcd screen 1080P 60Hz output, support 3.3V/5V/12V power supply 1* HDMI 2.0 support 4K 60Hz output support dual screen display
Audio	1* speaker output (2*5W 4R THD<10%) 1* earphone output 1* microphone input
Touch screen	1* I ² C interface (support multi touch screen) 。 Support USB infrared touch etc.
HDMI Output	1* HDMI OUT HDMI OUTput frequency, support 720P/1080P (option)
Camera	1* USB camera function, support 800W-USB camera port (option)
RTC	Embedded clock battery, support customized clock on/off
USB	4* USB-2.0 HOST
SIM	1* SIM slot, used for Mini PCIe expandable 4G LTE module
Infrared	1* infrared slot, support infrared remote function
LED	1* power supply status LED (red), 1* system LED (blue glitterign)
Button	1* reset button, 1* power supplier button, 1* upgrade button
Interface	Expandable RS232 , RS485 , 3* UART TTL
IO interface	4* IO interface, support input and output
8inch power consumption	15W
Working environment	-20degree +60degree
Power adaptor	Input: AC100-240V.50-60HZ, output: DC12V/5.5mm inside core 2.1 mm DC pins 2A—5A.

Operation system	Android5.1
Audio	MP3,WMA,WAV, APE, FLAC, AAC, OGG,M4A, 3GPP format
Video	Support H.265 , H.264, VP8, MAV , WMV , AVS , H.263 , MPEG4 video format, 1080P/2160P multi video decoding
Picture	Support JPG、BMP、PNG different picture format, and support flash, rotate, slideshow, picture zoom
System owner software	APK installer, email, PC, browser, audio record, calender, setup, clock, video display, picture file, download, music, sources management.
Lanuage support	Multi lanuage
Input	Standard Andriod keyboard
System management	Original Android system, opening root authority, it can be customized development.
	In-time far distance CCTV supervising, system recover automatically,7*24 hours none person check in-time
	Support OTA upgrade
	Support wifi display
System watchdog	support

Algorithm type	Deeply study human face algorithm method
Face records	1:1million pieces
Recognition time	340ms（5000human face inspect in time）
Error recognition rate	<0.01%
Refuse recognition rate	<0.1%
Recognition distance	1m~1.5m
1m~1.5m	90degree
Human management	Support human record update, delete, and checking function.
	Support download setup from internet server and local setup
Camera pixel	Dual eyes 500million
Fill light sensor distance	≤3 meters

Backlight recognition illumination	<6000Lux
Face filtering method	The biggest face
Capture human numbers	1person
Face registration	Capture image in-time/photo upload/ID card reading
Mass record input	support
Entrance gate control	Switcher quantities/232
Port	Power supply 12V, USB2.0*2 (2way code, ID card, IC card reading) , 100MB internet port*1, switcher quantity*1
size	Column Φ120mm*500mm
Screen size	8inch full angle, high brightness

3. Installation and setup

3.1 Installation

This device support three way installation, wall mount, entrancegate, clomn support, like following pictures:



Wall mounte



Hanging support



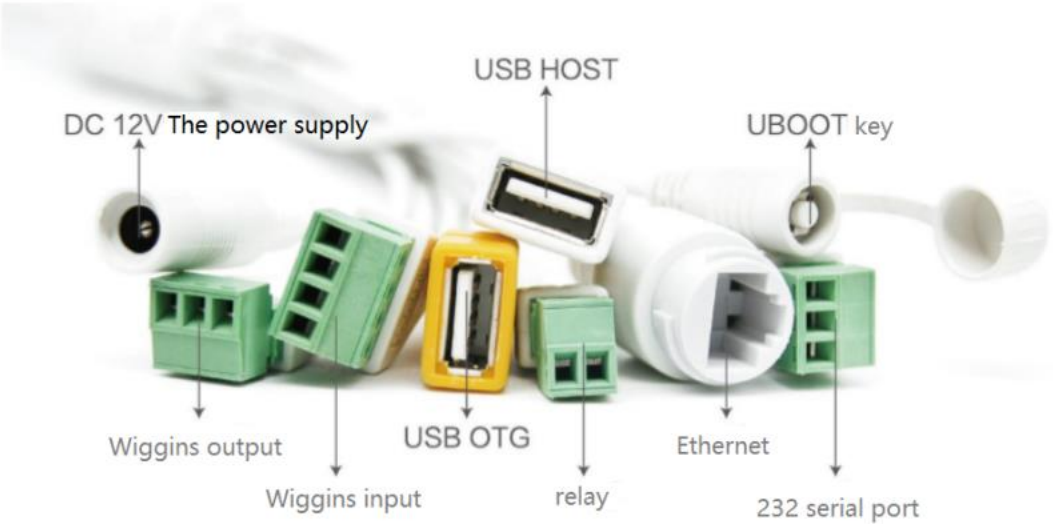
Column support

3.2 connect port



3.3 Connect port definition

Wire interface definition



■ Wiggins output

Electrical definition of terminal	
Pin1	D0_OUT
Pin2	D1_OUT
Pin3	GND

■ 232 serial port

Electrical definition of terminal	
Pin1	232_RX1
Pin2	232_TX1
Pin3	GND

The interface definition of each terminal is as follows:

■ relay

Electrical definition of terminal	
Pin1	COM
Pin2	NO

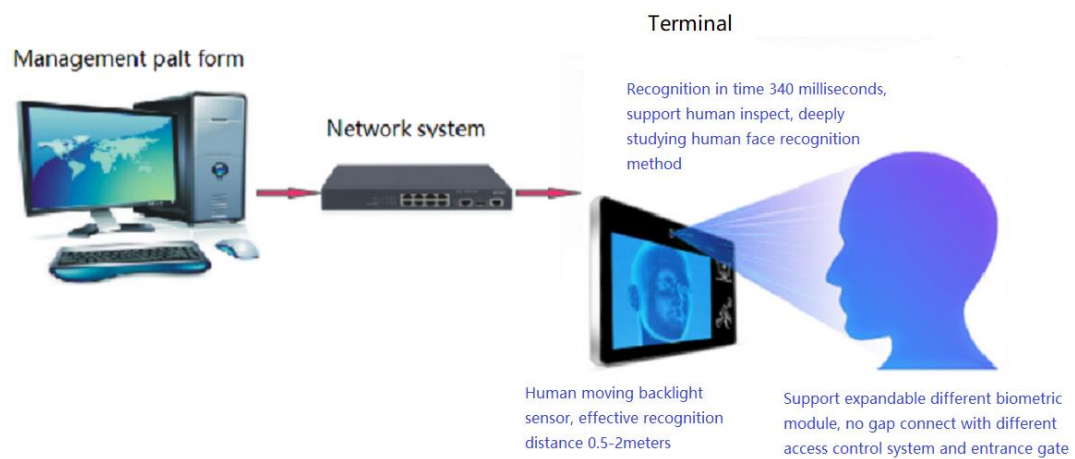
■ Wiggins input

Electrical definition of terminal	
Pin1	D0_IN
Pin2	D1_IN
Pin3	12V
Pin4	GND

4. Software operation

4.1 system structure

This system was combined by management plat form, internet system, terminal device three parts

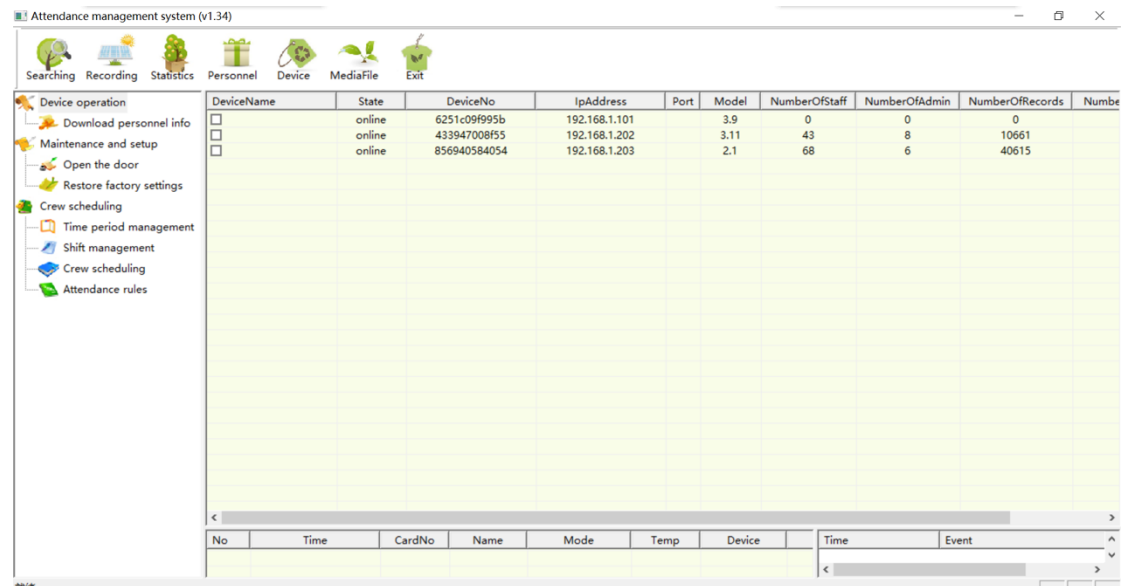


4.2 Software operation platform

Click software platform, as below:



Enter the main menu:



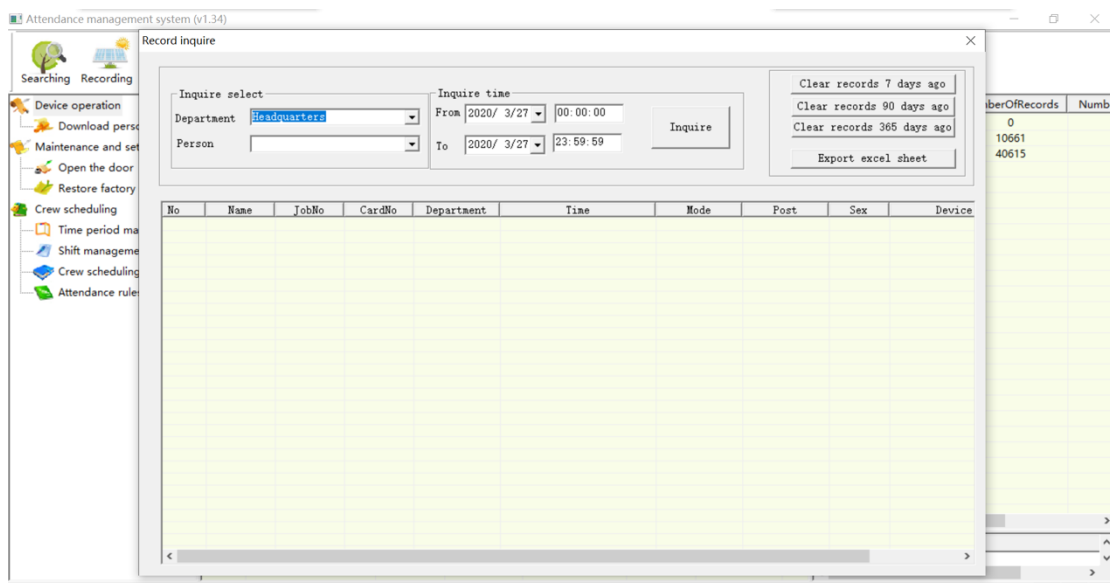
Search for equipment Connection Settings Disconnect device

1. This chapter contains three parts: search device, connect device and
2. High standby must be connected to the device before operation.
When the client starts operation, it will automatically search for the attendance machine in the LAN. All we need to do is click on the device
3. If the attendance machine is not in the LAN, at this time the search device can not search the device, we need to register the device in the device department -- register the device name (according to their preferences) and device IP (generally we set the attendance machine to a fixed IP, rather than automatically obtain IP (DHCP)).
4. Only one attendance machine can be connected at a time. When other attendance machines need to be connected, please disconnect the connected machine first.



Attendance statistics Statistical reports

- The attendance record looks up raw data that has not been processed. Can according to the company, the department, the individual carries on the inquiry, the inquiry here is the individual is a running account, has not been analyzed the data
- The query in the statistical report is the data analyzed according to the rules, which is the result of the analysis based on the information in the personnel scheduling (the specific personnel scheduling can be seen).



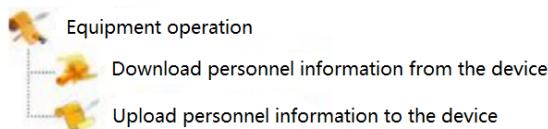
Personnel management

- Click on the button Enter the people management interface
- Edit the company's personnel information, delete and modify the company's staff information, of course, including the modification of the staff picture when the card.

The image shows a screenshot of a software application titled "Personnel Management". On the left is a sidebar menu with icons and labels: "Searching Rec", "Device operation", "Download", "Maintenance", "Open the", "Restore", "Crew schedule", "Time period", "Shift management", "Crew schedule", and "Attendance". The main window area is divided into two main sections. The top section contains a table with the following columns: "No", "Name", "Job No", "Card No", "Department", "Level", "Post", "Sex", and "Prompt". The table is currently empty. Below the table, there are two buttons: "Select All" and "Unselect All". The bottom section of the main window contains a form with several input fields and buttons. The form fields are: "Job No(*)", "Name(*)", "Entry Time", "Sex" (a dropdown menu), "Level" (a dropdown menu), "Mobile", "Nation", "Phone", "Birthday", "Post", "Department" (a dropdown menu), "Card No", and "Prompt". Below these fields are three buttons: "Add", "Delete", and "Modify". To the right of the form is a section titled "Inquire" with fields for "Job No" and "Name", and buttons for "Inquire" and "Export". At the very bottom of the window, there is a status bar that says "Select objects to operate on" with two radio buttons labeled "PC" and "Device".



- This part is divided into four modules: time management, shift management, personnel scheduling, and attendance rules.
- At the beginning we have to define the time period, the shift management is done on the basis of the time period, the personnel scheduling is done on the basis of the shift.
- Regarding personnel scheduling, the head office indicates that if no shift is set for all people, the head office will use the default shift.
- Similarly, a department's shift indicates that the department's default shift is used if no shift is set.
- Shifts are set for the purpose of reporting statistics.



- Equipment operation is mainly used for staff information backup, migration, etc. For example, if there is an attendance machine at the front desk, it is also necessary to place an attendance machine at the warehouse to facilitate the management of statistics and enter the warehouse personnel. At this time, it is only necessary to backup the data in the attendance machine at the front desk and upload it to the attendance machine at the warehouse.
- Backup data in the current directory under the Config directory, unless there is a need, generally do not manually delete this folder under the configuration file.

4.3 FAQ:

1 , Why can't my software connect to the attendance machine?

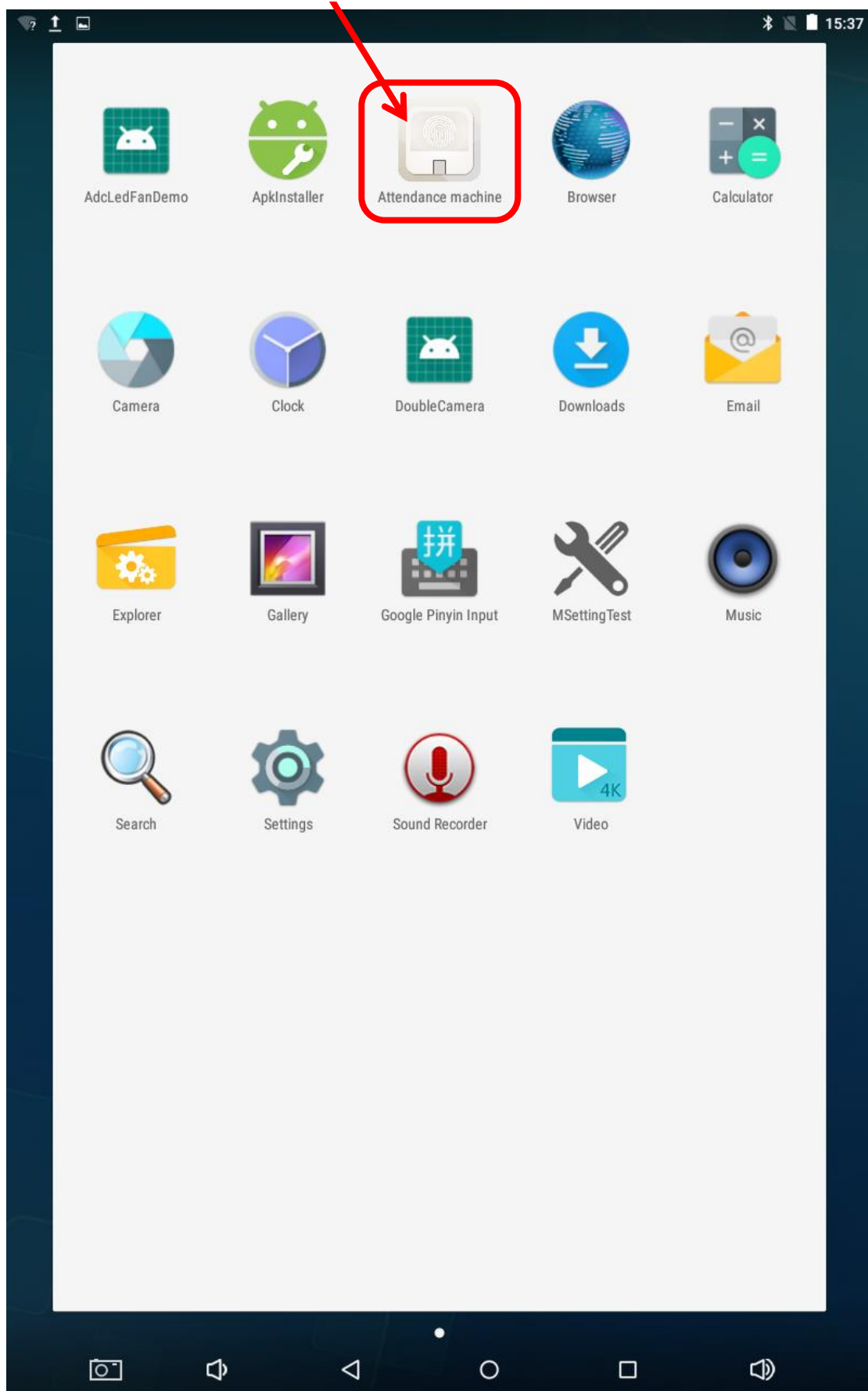
A: make sure that the attendance machine is on the same network as the computer the software is running on.

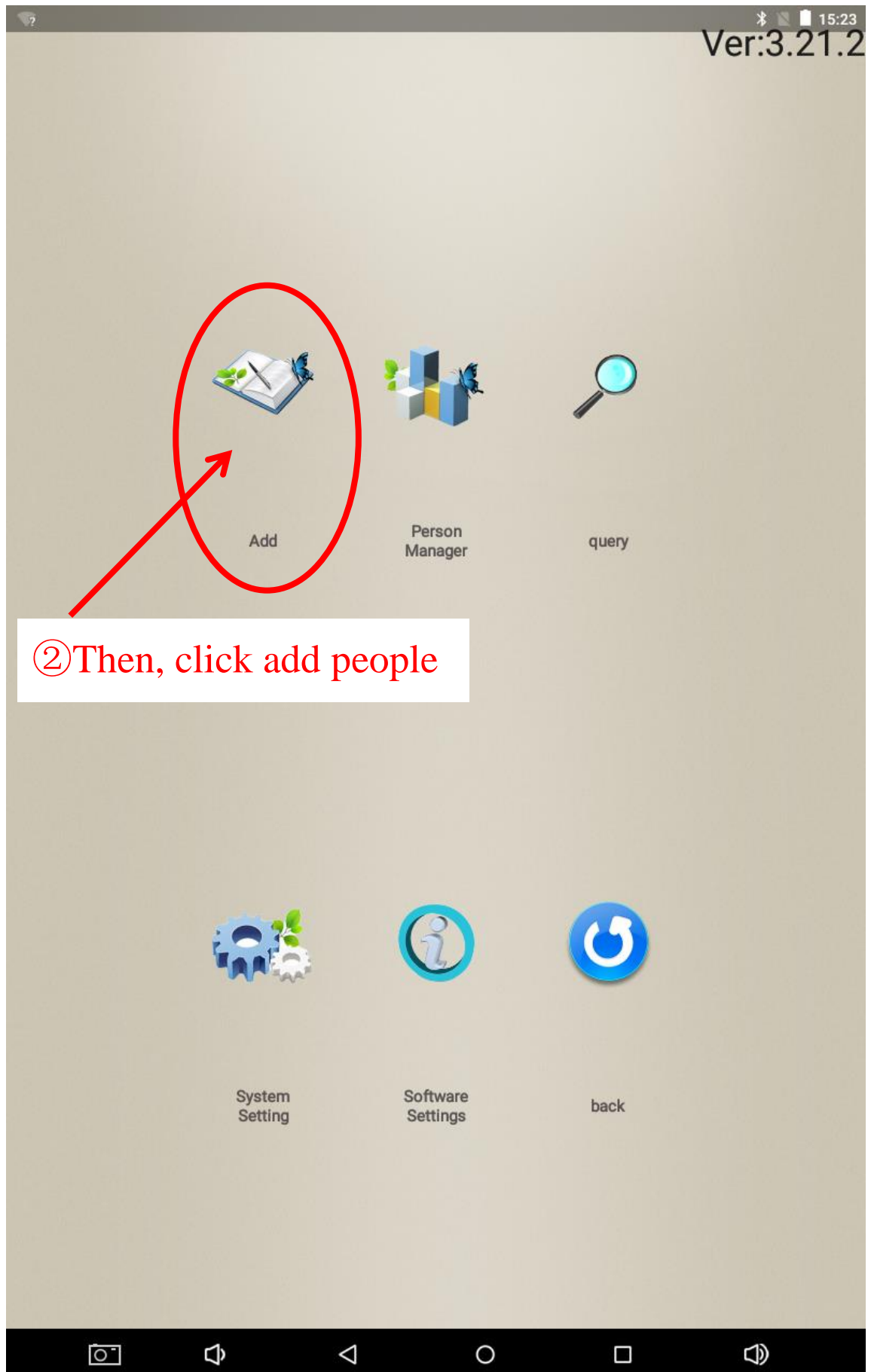
2.Company gate bad cloth network cable, attendance machine whether can connect wifi?

A: yes, our attendance machine not only supports ieee 802.11b/g/n, but also supports 5G carriers such as ieee 802.11ac.

五、 Comparison of Chinese and English menus of 8-inch attendance machine

①First, open the attendance machine software





②Then, click add people



Name *

Sex ☐ Male ☒ Female

Job Number * 2

Job title

Department

ID card number

phone

officePhone

Role Normal

Fingerprint Add

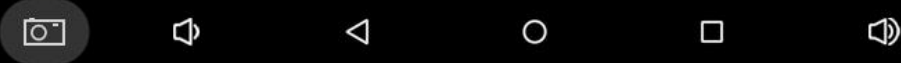
prompt




Take photo

Add

Cancel



People can be managed here



The form is a light gray rectangular box with a subtle drop shadow. It contains the following elements:

- Search Bar:** Located at the top left, it includes a dropdown menu with "All" selected, a text input field with an orange border, and a "Search" button with a magnifying glass icon.
- Image Placeholder:** A large, empty rectangular box with a gray border, intended for a profile picture.
- Form Fields:** A series of input fields on the right side, each with a label and a text input area:
 - Name
 - Sex
 - Department
 - Job title
 - Job Number
 - ID card number
 - phone
 - officePhone
 - Role
 - Fingerprint
 - prompt
- Action Buttons:** Three orange buttons labeled "Edit", "Delete", and "Cancel" are positioned at the bottom left of the form.
- Decorative Elements:** Three vertical gray bars are located at the bottom right of the form.



Display personnel attendance information

All ▼ date year month day to year month day Search

back Copy attendance record to USB



Software Settings

CONFIRM

Ver:3.21.2

Distance Sensor :	60
Sleep time(s):	60
Door lock Password:	159357
Alarm temperature	37.3
Visitors to record:	<input type="checkbox"/>
Binocular camera:	<input type="checkbox"/>
Screensaver function:	<input type="checkbox"/>
Manage password:	<input type="checkbox"/>
Fahrenheit	<input type="checkbox"/>
Visit to open the door:	<input type="checkbox"/>
environment temperature and dis:	<input type="checkbox"/>



Intelligent face recognition temperature system

36.5

36.5°C

15:27:28

2020-06-19

Friday

MANAGEMENT



Double click the upper right corner to enter the software password exit setting

Intelligent face recognition temperature system

1	2	3
4	5	6
7	8	9
#	0	⌫

CONFIRM

CANCEL

15:27:42

2020-06-19

Friday

MANAGEMENT



六、 Product consulting

Shenzhen mingjinkang electronics co., LTD. (brand: shenchuangxian)

Contact person: Yang xiaomei 13332985760, 18902465961

Need the complete machine to install the dimension drawing and the material object photograph contact xiao Yang: 18926458989 address: shenzhen xi xiang bao 'an district SAN wei yu xing industrial park, room 201, 2 / f

After-sales hotline: 13332981878 history

E-mail address: 411015546@qq.com
amyyangxiaomei@163.com

The company's official website address:

www.mjktech.com.cn www.szmjktech.com

Taobao address <https://m.tb.cn/h.e8swfNe>

Ming into Cornwall alibaba shop:

[https://qr.1688.com/share.html?Secret = q3Dc5wbE](https://qr.1688.com/share.html?Secret=q3Dc5wbE)