



ND49W

User Manual



CAR DVR HD SECURITY CAMERA

Dear Customer,

Congratulations on purchasing our Nakamichi mobile system product for your system.

This product has been designed and manufactured to Nakamichi's exacting standards. For the best performance, we recommend that you have your Nakamichi product installed by an authorized Nakamichi dealer.

If you would like to install this product on your own, we recommend for you to go through this manual to familiarize yourself with all the installation requirements and procedures.

If you encounter any issues or if you have any questions on the operation of this product, please contact your nearest authorized Nakamichi dealer for assistance, or you may also contact us through our website or social media channels.

Installation of Your Product

In today's modern vehicles, it is very easy to cause damage to existing systems through improper installation. Please follow and scrutinize all wiring diagrams to ensure that you have connected everything in its proper place.

If you find yourself uncomfortable or unfamiliar with understanding the wiring and installation diagrams or testing instructions, do contact your nearest Nakamichi dealer to perform the installation for you.

Safety Warnings and Considerations

- You should not set/install this dash cam at a place that would obstruct or reduce a driver's view. Make sure your usage comply with pertinent vehicle codes of your state, province, territory or country.
- You should post the required notices of recordation to occupants inside the vehicle, if voices or other information/signal pertaining to in-vehicle activities will be recorded.
- You should not change the dash cam's setting or mode of operation when the vehicle is in motion.
- You should not leave the dash cam in a visible spot when no one is inside the vehicle, to avoid attracting break-ins to steal the unit or other property.
- You should avoid extended exposure of the dash cam to direct sunlight or extreme temperatures (either high or low temperature) which tend to degrade or damage the unit and its normal functionality.
- You should examine, check and verify the dash cam at least every 6 months, including the memory card, to ensure the video reception and recording are working properly. For each use, you should verify that the dash cam unit,

the visible lights and the audible sounds are working normally. If there are signs of non-operation or malfunction, you should immediately seek to replace the product and check to see if the product is covered under any applicable warranty.

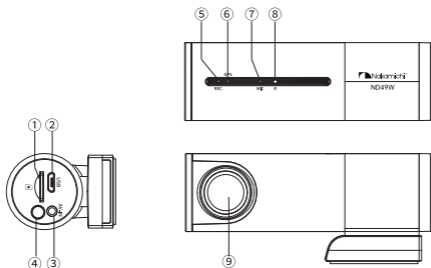
- The dash cam unit may have additional functionality, such as transmission and recordation of audible or GPS signal or other identification information. If you have privacy concerns about these functions, make sure you follow the instruction to disable these functions.
- You should use the dash cam unit in the way it is intended. You should not use the dash cam unit in a way that would be illegal or that tends to physically damage the unit, or tend to cause danger to the safe operation of the vehicle or the occupants.
- THIS DEVICE SHOULD NOT BE ADJUSTED BY THE DRIVER WHILE DRIVING. IN THE EVENT OF AN ACCIDENT, DEVICE MAY DISLODGE AND BECOME UNSAFE FOR PASSENGERS.
- Do not put the machine into the damp working condition, this machine have no waterproof function, so please make the machine no pour water or exposed to rain water.
- Do not try open the shell or try repair by yourself, if the accessories for this machine have any problem, please do to the professional maintenance station to repair.
- Do not use the thrill chemical substance, clean solvent or cleaner to clean this machine, please use the moist soft cloth to clean.
- Please pay attention to clean the lens surface, use the moist soft cloth clean the lens then use, to avoid the video is not so good.
- Do not use this machine under the condition that the dust and high density, to avoid affecting the video.
- Please protect the environment, don't discard this machine randomly; do not throw this machine into fire, otherwise will have an explosion.

The machine must be in the normal recording state to record video files. However, the image will be damaged or lost in the following situations:

- During recording, pulling out the TF card will cause the last video file to be damaged or lost.
- Illegal power failure during recording will cause damage or loss of the last video file.
- Damaged or lost video files caused by destructive collisions during the recording process.
- Excessive collision during the recording process caused the memory card to become loose at the time, which would damage the video file at the time or cause the video file to be lost.

PRODUCT SPECIFICATIONS

Video Resolution	Front: 2K 2560×1440P/ 30fps + Rear: 1080P
Viewing Angle	Front: 140° + Rear: 135°
Video Format	MP4/ H.265
Photo Resolution	4M
Photo Format	JPG
Support	Built in GPS/ WiFi/ APP/ Loop Recording/ G-sensor/ Car Plate/ WDR/ IF Card (up to 128GB)/ Capacitor Battery
Interface	TF Card/ Mini USB/ AV-IN
Operation Temperature	-20°C~60°C
Language	Multi-language
Unit Size	98×30×44mm
Accessories	Front Camera/ Rear Camera/Car charger/ USB Cable/ Buck Line/ 3M Adhesive



1. TF Card Slot
2. Micro Usb Port
3. AV-in
4. WiFi Switch + Wifi Indicator Light (Blue)
5. Power\Video Indicator Light (Red)
6. GPS Status Light (Green)
7. Mic
8. Reset
9. Front Camera

WiFi Function Key

- Charging status: long press the WiFi button for 3s to automatically shut down.
- Charging status: long press the WiFi button for 3s to automatically turn on.
- WiFi is on for recording: short press the WiFi button to "Lock".
- Press and hold the WiFi button for 10s to automatically format the IF card, and two beeps will indicate successful formatting.

Indicator Light

- WiFi indicator light (Blue): The blue light will be on when WiFi is on, the blue light will be off when WiFi is off.
- Power/Video indicator light (Red) : It will flash during recording.
- GPS status light (Green): The green light will be on if GPS is working.

PRODUCT PRECAUTIONS

1. Before installation, please check the accessories carefully to ensure that the products and accessories are correct and complete, and then start the installation.
2. During installation, be sure not to insert the car key into the power supply, and do not insert or pull out any machine accessories in the status of Power-on, including: rear camera, SIM card, SD card. These actions should be completed when power is turned off.
3. When the car key is plugged into the vehicle, the dash cam will automatically turn on. Please check whether the function of power on/off, the front and rear cameras and the rear view display are normal.
4. When the machine is in use, it is forbidden and dangerous to pull and insert the rear camera plug, GPS antenna and SD card, which will cause the recorded video files to be damaged and the machine to be abnormal or damaged.
5. If you need to download the recording videos and images, press SD card directly when the car is turned off. Then insert the SD card into the machine again when the vehicle is turned off.
6. You must use C10 high-speed card (recommended capacity 8-32G), lower than C10 will cause problems like video stutter, black screen, video can not be recorded or not be played or not automatically be covered.
7. Achieving more functions require mobile phone terminal to connect to dash cam with Kacam APP. The specific application method of the APP will be described in detail later.

PRODUCT INSTALLATION GUIDE

1. Turn off the car engine.
2. Insert the TF card into the card slot of dash cam.
Attention: Please use high-speed SD card (Class10 or above, capacity is not less than 8GB, max to 128GB, and to format the SD card with the machine or PC before using)
3. Fix the dash cam on the windscreen of your car.
4. Insert the car charger into the car cigarette lighter, and please use the standard car charger.
Attention: Pave the cable alongside the edge of windshield.
5. Pay attention to the direction while installing the rear camera in the rear of the vehicle and. Wiring can be laid along the roof of the vehicle. After installation, connect the rear plug into the rear camera interface of the recorder AV-IN, and there is no need to connect the red reversing wire which is no screen cam. The cable lug should be by insulating tape Instead.
6. Adjust the lens position to ensure that the lens are level with the ground.
7. Start the engine and check whether the machine is installed correctly.

APP OPERATING INSTRUCTIONS

1. Android System Mobile Phone
Open the "Google play store" search "Kacam" to download and install.
2. IOS System Apple Phone
Open the "Apple store" search "Kacam" to download and install.
3. WiFi Connection
Open your smartphone WiFi settings and select Dash Cam Network: LS01; Use password 88889999 to connect. Once connected, launch the APP to see live video, track your journey, change camera settings or download captured footage and photos.

Note:

If you forget the wifi password, Don't worry! Just take out the TF card from the camera, then connect the TF card with computer by card reader, enter into the file "configs.txt", you will find the password easily!

4. In the recorder preview interface, if it pops up "Currently WLAN is not available for Internet access, do you want to switch to another network?" Please select "Do not switch", otherwise the WIFI connection will be disconnected.
5. On the recorder preview interface, click the icon of my settings on the upper right to enter the recorder settings and modify the settings.

GPS PLAYER SOFTWARE INSTALLATION

If need check the GPS information , the professional player must be installed firstly.

1. Please install the customized video player
GPS Player - Windows
<http://nakamichi.global/Software/Other%20Applications/ND49W-GPSPlayer-2.0-x64-Setup.exe.zip>
GPS Player - macOS
<http://nakamichi.global/Software/Other%20Applications/ND49W-GPSPlayer.zip>
2. Please copy the customized video player to computer and install.

USING THE PLAYER SOFTWARE

1. Please open the customized video player and install it for the first time use.
2. Click File open to choose the file which need play, and open the play mode directly, as fig.1.
3. Click the secondary icon in the upper right corner to set multi-language selection and location information, as fig.2.
Note: Please select the map to be used before loading the video. The default map of the software is Baidu map and English.
4. Click File open and select the video file to be played .
Note: Please copy the video recorded by the recorder to the local disk of the computer first.

PRODUCT PRECAUTIONS

5. After the video is loaded, during the playback of the video, the car trajectory located by GPS will be displayed on the map. As Fig.3.

Fig.1



Fig.2

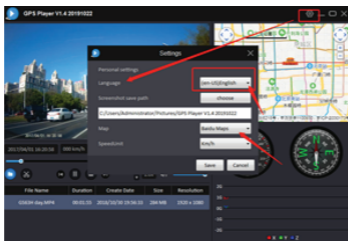
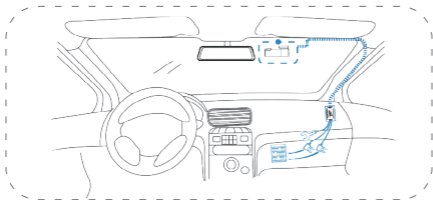


Fig.3

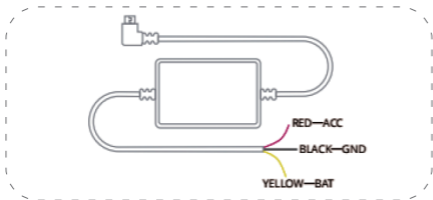


EQUIPMENT INSTALLATION

1. Please align the power cable accordingly as seen in the diagram as this will not affect the view for driving. The recorder shall be installed at the front of inner review mirror as far as possible, so that the perspective obtained will be more completely.
2. Please don't install the recorder in the location that distracts drivers.
3. Some vehicles still supplies the power to the equipment even after flameout, so it is suggested to disconnect the power supply when leaving the car, so as to avoid contingency.
4. Locate the location of the fuse box in your vehicle.



5. Connect the YELLOW cable that goes to a constant fuse , the RED cable that goes to an ignition-switched fuse and BLACK cable that goes to a metal ground bolt .



6. Connect the micro USB end of the hard wiring cable to the camera micro USB port 4 .
7. Start your vehicle to see if it works properly . Arrange and hide the wires to avoid obstruction for the driver's view.

FAQ

Under normal operating conditions, if there is problems with the device, please refer to the following methods to solve.

Q: Cannot take picture and record.

A: Please check whether there is enough space for of TF card, or if it is locked.

Q: Stopping automatically while recording.

A: Due to the huge amount of HD video data, please use high-speed C10 TF card with SDHC compatible, there will be the mark of C10 on the TF card.

Q: There is "wrong file" shown on LCD when replay the photo/ video.

A: Because of TF card storage error, please format your TF card.

Q: Fuzzy image.

A: Please check if the lens stay with dirt, fingerprints, please cleaned lens with paper before shooting.

Q: Dark image when shooting the scene of sky or water

A: There will have an impact on the exposure when the big difference between the scene. Please adjust the "EV" in the menu setting.

Q: The color is not good in the cloudy or indoor.

A: Please check the "white balance" is Auto or not in the menu.

Q: Horizontal stripes interference in the image.

A: This is due to the wrong setting of light frequency error, please set the frequency 60HZ or 50HZ according to the local power supply.

Q: Freezing.

A: Please reset to recover when device hangs off.

Q: The rear view image flashes or does not display:

A: First confirm whether the interface connected to the host and the BMW head connected to the rear view lens are loose or not inserted in place.

Q: No sound during broadcast:

A: Please check whether the volume setting is too low or whether the machine crashes.

您的產品

尊敬的客戶：

感謝您購買了適用於您的音響系統的Nakamichi移動系統產品。

該產品的設計和製造符合Nakamichi的嚴格標準，可確保多年的音頻享受。為了獲得更佳性能，我們建議您由授權的Nakamichi經銷商安裝Nakamichi產品。

如果您想自行安裝此產品，我們建議您通讀本手冊以熟悉所有安裝要求和過程。

如果您遇到任何問題或對本產品的使用有任何疑問，請聯繫離您最近的Nakamichi授權經銷商以尋求幫助，或者您也可以通過我們的網站或社交媒體渠道與我們聯繫。

產品安裝

在當今的現代車輛中，很容易因安裝不當而損壞現有系統。請遵循並仔細檢查所有接線圖，以確保已正確連接所有部件。

如果您不熟悉接線和安裝圖或測試說明而感到不舒服，請與最近的Nakamichi經銷商聯繫以進行安裝。

安全警告和注意事項

- 不要將行車記錄儀設定/安裝在妨礙或降低駕駛員視野的地方。確保您的使用符合您所在州、省、地區或國家的相關車輛法規。
- 如果與車內活動有關的聲音或其他資訊/訊號將被記錄，則應向車內乘客張貼所需的記錄通知。
- 當車輛行駛時，不應更改行車記錄儀的設定或操作模式。
- 當車內無人時，不要將行車記錄儀放在顯眼的地方，以避免吸引破門而入來盜取裝置或其他財產。
- 應避免行車記錄儀長時間暴露在陽光直射或極端溫度（高溫或低溫）下，這可能會降低或損壞行車記錄儀及其正常功能。
- 您應至少每6個月檢查和驗證行車記錄儀，包括存儲卡，以確保視頻接收和錄製工作正常。每次使用時，應確認行車記錄儀單元、可見光和聲音是否正常工作。如果出現不工作或故障迹象，應立即更換產品，並檢查產品是否在任何適用的保修範圍內。
- 行車記錄儀單元可能具有附加功能，例如音訊或GPS訊號或其他識別資訊的傳輸和記錄。如果您對這些功能有隱私顧慮，請按照說明禁用這些功能。
- 您應該按照預期的管道使用行車記錄儀。使用行車記錄儀時，不應非法使用行車記錄儀，否則會損壞行車記錄儀，或對車輛或乘客的安全操作造成危險。
- 駕駛員在駕駛時不應調整該裝置。一旦發生事故，設備可能會移位，對乘客不安全。
- 請勿將本機置於潮濕的工作狀態，本機無防水功能，請不要將本機澆水或淋雨。
- 請勿嘗試打開外殼或自行維修，如果本機配件有任何問題，請到專業維修站進行維修。
- 請勿使用刺激性化學物質、清潔溶劑或清潔劑清潔本機，請使用濕軟布清潔。
- 請注意清潔鏡頭表面，用濕軟布清潔鏡頭後再使用，避免視頻效果不太好。
- 請勿在灰塵和高密度的情況下使用本機，以免影響視頻。
- 請保護環境，不要隨意丟棄本機，不要將本機扔進火中，否則會發生爆炸。

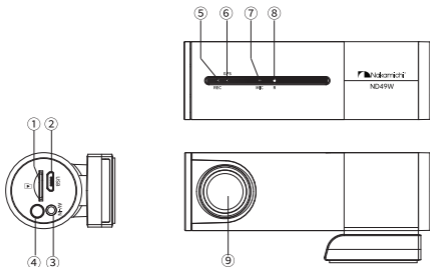
您的产品

設備必須處於正常錄製狀態才能錄製視頻檔案。在下列情況下影像會損壞或遺失：

- 在錄製過程中，拔出TF卡會導致最後一個視頻檔案損壞或遺失。
- 錄製過程中非法斷電會導致最後一個視頻檔案損壞或遺失。
- 在錄製過程中，由於破壞性碰撞導致視頻檔案損壞或遺失。
- 錄製過程中的過度碰撞導致存儲卡當時鬆動，這可能會損壞當時的視頻檔案或導致視頻檔案遺失。

規格參數

視頻分辨率	前攝像頭: 2K 2560×1440P/ 30fps + 後攝像頭: 1080P
鏡頭角度	前攝像頭: 140° + 後攝像頭: 135°
影片格式	MP4/ H.265
照片分辨率	4M
照片格式	JPG
支持	GPS定位/ WiFi互聯/ APP/ 循環記錄/ 碰撞鎖影功能/ 停車監控/ 縮時錄影/ SD卡 (最大128GB)/ 內置麥克風/ 電容器電池
接口	SD卡/ 迷你USB/ AV-IN
工作溫度	-20°C~60°C
語言	多國語言 (默認英語)
產品尺寸	98×30×44mm/
附件清單	前置攝像頭/ 後置攝像頭/ 車載充電器/ USB電纜/ 降壓線/ 3M雙面膠



1. TF卡端口
2. 微型USB端口
3. AV輸入端口
4. WiFi開關+WiFi指示燈（藍色）
5. 電源/視頻指示燈（紅色）
6. GPS狀態指示燈（綠色）
7. 麥克風
8. 重置
9. 前置攝像頭

WiFi功能鍵

- 充電狀態：長按WiFi按鈕3秒鐘即可自動關閉。
- 充電狀態：長按WiFi按鈕3秒鐘以自動打開。
- WiFi處於錄製狀態：短按WiFi按鈕以“鎖定”。
- 按住WiFi按鈕10秒鐘以自動格式化IF卡，並且發出兩聲嗶聲表示格式化成功。

指示燈

- WiFi指示燈（藍色）：WiFi開啟時，藍色指示燈會亮起；WiFi關閉時，藍燈將熄滅。
- 電源/視頻指示燈（紅色）：在錄製過程中將閃爍。
- GPS狀態指示燈（綠色）：如果GPS工作，則綠色指示燈將亮起。

初次使用注意事項

1. 安裝前，請仔細檢查附件，確保產品和附件正確完整，然後再開始安裝。
2. 在安裝過程中，請確保不要將車鑰匙插入電源，並且不要在開機狀態下插入或拔出任何機器配件，包括：後置攝像頭，SIM卡，SD卡。電源關閉時，應完成這些操作。
3. 將車鑰匙插入車輛後，行車記錄儀將自動打開。請檢查電源開關，前後攝像頭和後視顯示功能是否正常。
4. 使用本機時，嚴禁拉扯並插入後置攝像頭插頭，GPS天線和SD卡，這將導致錄製的視頻文件損壞以及本機異常或損壞，這是危險的。
5. 如果需要下載錄製的視頻和圖像，請在汽車關閉時直接按SD卡。關閉車輛後，將SD卡再次插入機器。
6. 您必須使用C10高速卡（推薦容量8-32G），低於C10會導致視頻卡頓，黑屏，無法錄製或無法播放視頻或無法自動覆蓋視頻等問題。
7. 要實現更多功能，需要手機終端通過Kacam APP連接至行車記錄儀。稍後將詳細描述APP的具體應用方法。

產品安裝指南

1. 關閉汽車發動機。
2. 將SD卡插入行車記錄儀的卡槽中。
注意：請使用高速SD卡（C10高速或以上，容量不少於8GB，最大為128GB，並在使用之前格式化SD卡）。
3. 將行車記錄儀固定在汽車的擋風玻璃上。
4. 將車載充電器插入點煙器，請使用標準車載充電器。
注意：將電纜鋪設在擋風玻璃的邊緣。
5. 將後置攝像頭安裝在車內後擋風玻璃居中位置，安裝時注意方向。佈線沿車輛頂棚敷設。由於本記錄儀為無屏機型因此攝像頭延長線上的紅色倒車線無需安裝連接。使用絕緣膠布將接線頭包裹好防止線頭外露便可。安裝完成後將後插頭接入記錄儀後置攝像頭端口。
6. 調整鏡頭位置，以確保鏡頭與地面齊平。
7. 啟動引擎，檢查機器是否正確安裝。

APP操作說明

1. Android系統手機：打開“Google Play商店”搜索“Kacam”以下載並安裝。
2. IOS系統蘋果手機：打開“Apple store”搜索“Kacam”以下載並安裝。
3. 安裝應用後，首次使用，點擊“點擊連接設備”跳轉到手機WiFi列表，在清單中找到記錄儀的WiFi AP名稱“LS01-643972_2.4G”（注：643972為亂數），點擊連接，初始密碼：88889999。連接成功後，返回到應用主介面，再次點擊“連接記錄儀”進入記錄儀預覽介面。

注意：

如果您忘記了WiFi密碼，請放心！只需從記錄儀中取出SD卡，然後通過讀卡器讀取TF卡內的文件“configs.txt”，即可輕鬆找到密碼！

4. 記錄儀預覽介面，如彈“當前WLAN不可上網，是否切換到其他網路？”請選擇“不切換”，否則會斷開WiFi連接。
5. 在記錄儀預覽介面，點擊右上角設置圖示，進入記錄儀設置，可修改設置。

GPS播放器軟件的安裝

如果需要檢查GPS信息，則必須先安裝專業播放器。

- 1.請安裝定制的視頻播放器

GPS Player - Windows

<http://nakamichi.global/Software/Other%20Applications/ND49W-GPSPlayer-2.0-x64-Setup.exe.zip>

GPS Player - macOS

<http://nakamichi.global/Software/Other%20Applications/ND49W-GPSPlayer.zip>

- 2.請將自定義的視頻播放器複製到計算機上並進行安裝。

播放器軟件使用

- 1.請打開自定義的視頻播放器並安裝，以供首次使用。
- 2.單擊“打開文件”選擇需要播放的文件，然後直接打開播放模式，如圖1所示。
- 3.單擊右上角的輔助圖標以設置多語言選擇和位置信息，如圖2所示。
注意：請在加載視頻之前選擇要使用的地圖。該軟件的默認地圖為百度地圖和英文。
- 4.單擊打開文件，然後選擇要播放的視頻文件。
注意：請先將錄像機錄製的視頻複製到計算機的本地磁盤。
- 5.加載視頻後，在視頻播放期間，GPS定位的汽車軌跡將顯示在地圖上，如圖3。

圖1



圖2

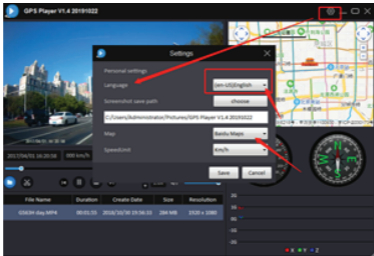
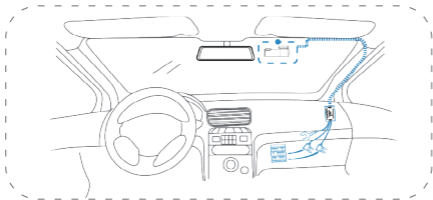


圖3

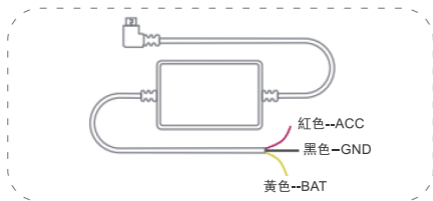


設備安裝

1. 請按具體車內環境，固定好車載電源線，以免影響行車視線，記錄儀盡量裝在車內後視鏡前方位置，取得的視角更全面。
2. 請勿將設備安裝在分散駕駛員注意力或會阻擋視線的位置。
3. 有部分車型在熄火後仍有供電給設備。在離開車時，必須要把車電源拔出，以免發生意外情況。
4. 先找到並確定車輛保險絲盒的位置。



5. 黃色電纜用於接汽車電池(BAT+), 紅色電纜用於接保險盒(ACC), 黑色電纜用於接金屬螺絲(GND)。



6. 將降壓線的Micro USB端連接到記錄儀的MICRO USB埠
7. 啟動您的車輛以查看其是否正常運行，整理並隱藏好電線，以免妨礙駕駛員的視線。
注意：降壓線的安裝需要汽車自動化方面的基礎知識，建議選擇專業汽修美容店專業技師安裝降壓線。

常見故障解答

在正常操作條件下，如果設備存在問題，請參考以下方法進行解決。

問：無法拍照並記錄。

答：請檢查TF卡是否有足夠的空間或是否已鎖定。

問：錄製時會自動停止。

答：由於高清視頻數據量巨大，請使用兼容SDHC的高速C10 TF卡，TF卡上會有C10的標記。

問：回放照片/視頻時，LCD上顯示“錯誤文件”。

答：由於TF卡存儲錯誤，請格式化TF卡。

問：圖像模糊。

答：請檢查鏡頭上是否留有灰塵，指印，拍攝前請用紙清潔鏡頭。

問：拍攝天空或水景時圖像暗淡

答：當曝光與場景之間會有很大差異時，會產生影響。請在菜單設置中調整“EV”。

問：陰天或室內顏色不好。

答：請檢查菜單中的“白平衡”是否為“自動”。

問：圖像中出現橫條紋干擾。

答：這是由於光頻率錯誤設置錯誤造成的，請根據當地電源將頻率設置為60HZ或50HZ。

問：死機。

答：請在設備掛起時重置以恢復。

問：後視圖圖像閃爍或不顯示：

答：首先確認連接到主機的接口和連接到後視鏡的BMW頭是否鬆動或未插入到位。

問：廣播過程中沒有聲音：

答：請檢查音量設置是否太低或機器是否崩潰。



SCAN OUR QR CODE OR VISIT WWW.NAKAMICHICARAUDIO.COM
FOR COMPLETE AUDIO SETTINGS INSTRUCTIONS

 nakamichi.global  nakamichi.caraudio

Made in China | 中國製造