



SCAN OUR QR CODE OR VISIT [WWW.NAKAMICHICARAUDIO.COM](http://WWW.NAKAMICHICARAUDIO.COM)  
FOR COMPLETE AUDIO SETTINGS INSTRUCTIONS

 nakamichi.global  nakamichi.caraudio

Made in China | 中國製造

 [nakamichicaraudio.com](http://nakamichicaraudio.com)  [nakamichi.global](https://www.facebook.com/nakamichi.global)  [nakamichi.caraudio](https://www.instagram.com/nakamichi.caraudio)

## CAR CAMERA

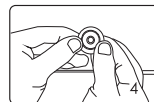
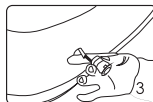
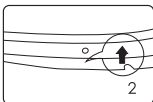
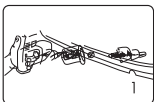
## SPECIFICATIONS

Image Sensor	Color CMD(Photosensitive Chip)	Shutter Speed	1/60-20 $\mu$ s
Lens Angle	145°	Video Output	Normal video out: 1.0Vp-p,75 $\Omega$
TV System	NTSC/PAL	Power Supply	12V
Effective Pixels	720(H)x 480(V)	Operating Temperature	-35°C~+85°C RH 95% Max
Horizontal Resolution	750 TVL	Storage Temperature	-35°C~+85°C RH 95% Max
Sensing Area	4.08mm X3.102mm	waterproof	IP68

## INSTALLATION

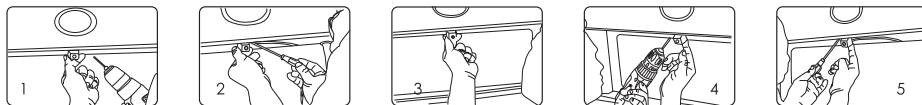
Please read these instructions carefully before installation and use. Installation should be performed by professional staff.

### A. INSTALLATION INSTRUCTION FOR EMBEDDED/PUNCHING CAMERA



1. Before making a hole in the car, please make sure the diameter of the camera equal to the drill bit.
2. According to the arrow indicated direction (up) to install.
3. Insert the lead wire of the camera into the hole and then begin to install the camera.
4. As above diagram, using two thumbs to push the camera into the car with balanced forces.

## B. INSTALLATION INSTRUCTION FOR HANGING CAMERA



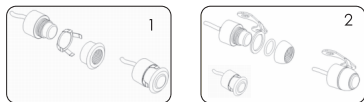
1. For easy installation, please use drill to open a screw hole at the appropriate position in the rear license plate of the car.
2. Tighten the first screw into the screw hole with screw driver.
3. Please adjust the camera's position according to the actual display on the monitor.
4. After adjustment, please use drill to open the second screw hole.
5. After fixing the second screw, all the installation are finished.

## C. INSTALLATION INSTRUCTION FOR LICENSE PLATE



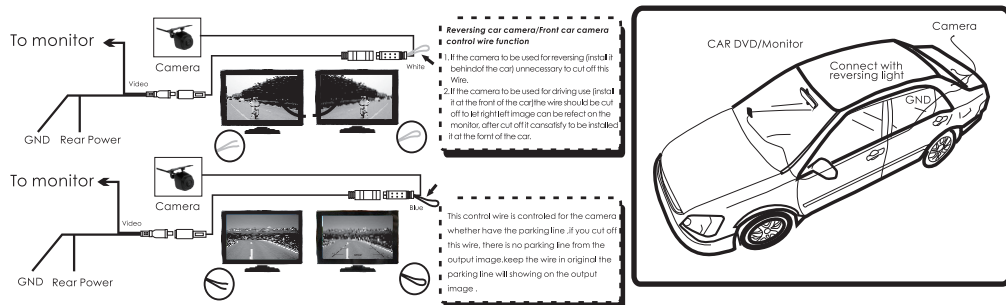
1. Take out of the license plate ,adjust the direction up and down.
2. Alignment license plate to the installation location of the car.
3. Tighten the screws,install the license plate frame camera.
4. Adjust up and down angles of the camera, then fixed the screw.

## D. ASSEMBLY DIAGRAM FOR EXCHANGING THE FRONT HOUSING OF PUNCHING/EMBEDDED AND HANGING CAMERA.



1. As above diagram shown, change the front housing of embedded / punching camera to hanging one.
2. As above diagram shown, change the front housing of hanging camera to embedded/punching one.

## IMAGE INSTRUCTION



## WHAT'S IN THE BOX

1. Camera x1pc
2. 6m Video Cable x1pc
3. Ø7×10 mm Screw x3pcs
4. User Manual x1pc
5. 3M Adhesive x1pc