

BESTTEN[®]

Power for Today, Ideas for Tomorrow

www.ibestten.com
support@ibestten.com
1-800-358-6160 (Mon-Fri 9AM-5PM PST)

LED Dimmer & Sensor Switches 2023

BESTTEN[®]

Power for Today, Ideas for Tomorrow

BESTTEN[®]

Power for Today, Ideas for Tomorrow

LED Dimmer & Sensor Switches

About Us

As an experienced electrical component provider, BESTTEN is dedicated to the research, development, and sales of quality electrical products throughout the US and Canada.

Our mission is to serve our customers in the best way possible with communication, reliability, and exceptional value.

With innovative designs, competitive pricing, reliable quality and exceptional service, BESTTEN can help our partners and customers to become leaders in this product category.



BESTTEN[®]

Power for Today, Ideas for Tomorrow

Receptacles



BESTTEN[®]

Power for Today, Ideas for Tomorrow

Light Switches



BESTTEN[®]

Power for Today, Ideas for Tomorrow

Screwless Wall Plates

Available Color

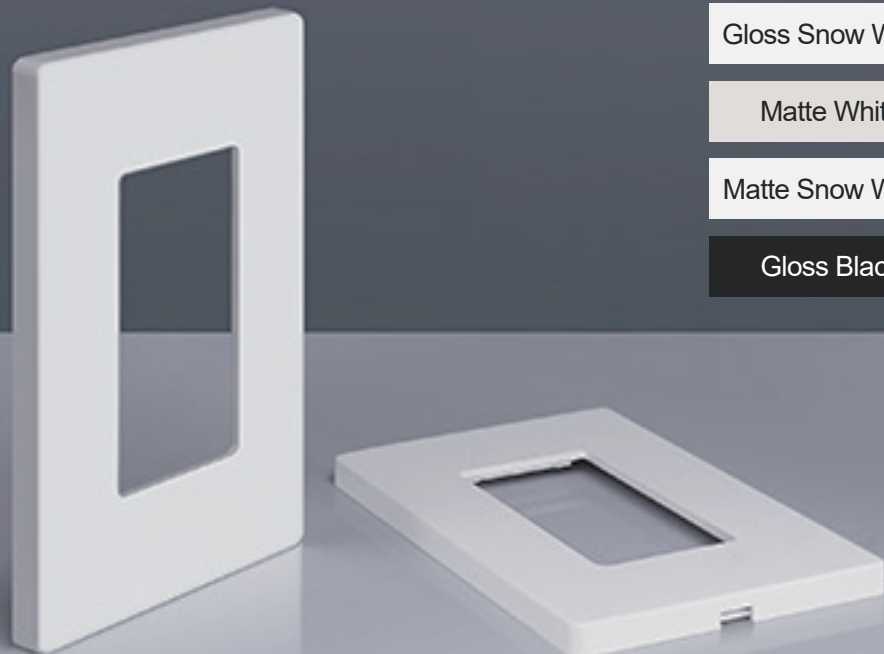
Gloss White

Gloss Snow White

Matte White

Matte Snow White

Gloss Black



CONTENTS

01 USP-DS06 (Regular Phase Cut / 0-10V Dimmer)

02 USP-DS08 (Regular Phase Cut / 0-10V Dimmer)

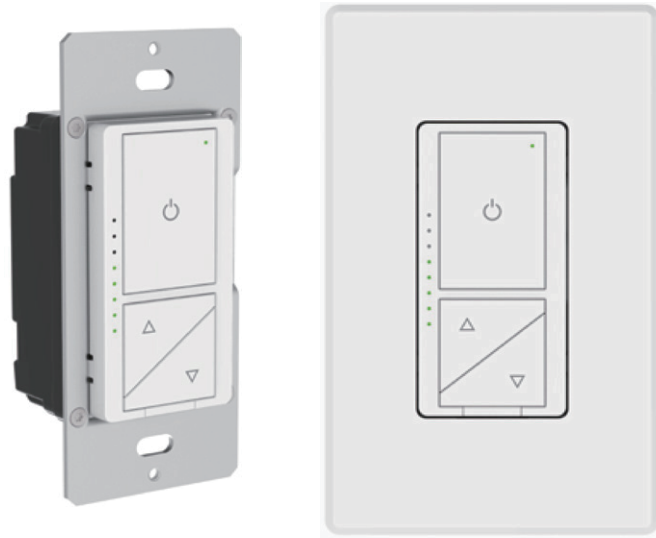
03 USP-LS02 (Regular Phase Cut Dimmer)

04 USP-DS09 (Regular Phase Cut / 0-10V Dimmer)

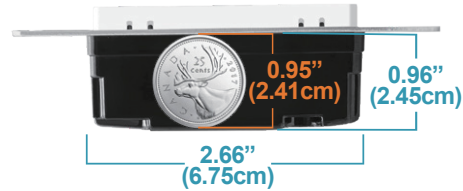
05 USP-DS07 (Regular Phase Cut / 0-10V Dimmer)

06 USP-OS02 (Regular Sensor Switch)

Regular Phase-cut Dimmer



Super Slim Design



Product Characteristics

- Smooth dimming curve and good dimming characteristic
- High adaptability and compatibility
- Set the min and max brightness to adjust the lamp without flicker and dead route
- Press any button, can turn on the lamp when lamp is off
- Startup and power off memory function
- Overload protection and over temperature protection
- With disconnecter to cut-off live part for safety
- Single pole or 3-Way circuit

Dimension (LxWxH): 4.13x1.73x1.22(in) / 105x44x31(mm)



Model No.	Rated Voltage	Power Supply	Max.Load	Min.Load	Dimming Method	Application
			LED/Incandescent	LED/Incandescent		
USP-DS06	120V, 60Hz	Live Wire	200W/600W	3W/15W	Phase Cut (Leading)	Single Pole or 3-Way

0-10V Dimmer

Model No.	Rated Voltage	Power Supply	Max.Load	Min.Load	Dimming Method	Application
			LED/Incandescent	LED/Incandescent		
USP-DS06L	120-277V, 50/60Hz	Live Wire	1200VA	5VA	0-10V	Single Pole or 3-Way

Regular Phase-cut Dimmer



Super Slim Design



Product Characteristics

- Minimum brightness can be set to ensure lights turn on every time
- Smooth dimming curve and good dimming characteristic
- High adaptability and compatibility
- Startup and power off memory function
- Overload protection, over temperature protection
- Single pole or 3-Way circuit

Dimension (LxWxH): 4.13x1.73x1.26(in) / 105x44x32(mm)

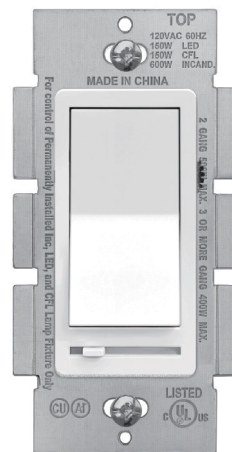


Model No.	Rated Voltage	Power Supply	Max.Load	Min.Load	Dimming Method	Application
			LED/Incandescent	LED/Incandescent		
USP-DS08	120V, 60Hz	Live Wire	300W/600W	3W/15W	Phase Cut (Leading)	Single Pole or 3-Way

0-10V Dimmer

Model No.	Rated Voltage	Power Supply	Max.Load	Dimming Method	Application
USP-DS08L	120-277V, 50/60Hz	Live Wire	600VA	0-10V	Single Pole or 3-Way
	120-277V, 50/60Hz	Live Wire or Neutral & Live Wire	1200VA	0-10V	Single Pole or 3-Way

Regular Phase-cut Dimmer



Product Characteristics

- Minimum brightness can be set to ensure lights turn on every time
- Smooth dimming curve and good dimming characteristic
- High adaptability and compatibility
- Startup and power off memory function
- Overload protection, over temperature protection
- Single pole or 3-Way circuit

Dimension (LxWxH): 4.13x2.12x1.73(in) / 105x54x44(mm)



Model No.	Rated Voltage	Power Supply	Max.Load	Min.Load	Dimming Method	Application
			LED/Incandescent	LED		
USP-LS02	120V, 60Hz	Live Wire	150W/600W	3W	Phase Cut (Leading)	Single Pole or 3-Way

Regular Phase-cut Dimmer



Super Slim Design



Product Characteristics

- Minimum brightness can be set to ensure lights turn on every time
- Smooth dimming curve and good dimming characteristic
- High adaptability and compatibility
- Startup and power off memory function
- Overload protection, over temperature protection
- Single pole or 3-Way circuit

Dimension (LxWxH): 4.13x1.73x1.26(in) / 105x44x32(mm)

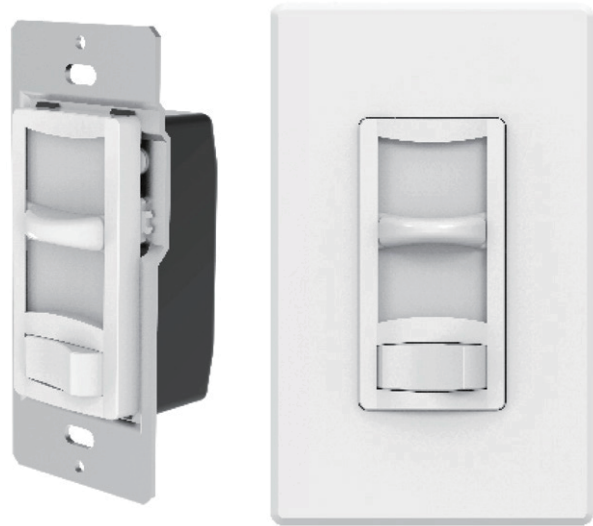


Model No.	Rated Voltage	Power Supply	Max.Load	Min.Load	Dimming Method	Application
			LED/Incandescent	LED/Incandescent		
USP-DS09	120V, 60Hz	Live Wire	200W/600W	3W/15W	Phase Cut (Leading)	Single Pole or 3-Way

0-10V Dimmer

Model No.	Rated Voltage	Power Supply	Max.Load	Dimming Method	Application
USP-DS09L	120-277V, 50/60Hz	Live Wire	600VA	0-10V	Single Pole or 3-Way
	120-277V, 50/60Hz	Live Wire or Neutral & Live Wire	1200VA	0-10V	Single Pole or 3-Way

Regular Phase-cut Dimmer



Super Slim Design



Product Characteristics

- Minimum brightness can be set to ensure lights turn on every time
- Smooth dimming curve and good dimming characteristic
- High adaptability and compatibility
- Startup and power off memory function
- Overload protection, over temperature protection
- Single pole or 3-Way circuit

Dimension (LxWxH): 4.13x1.73x1.38(in) / 105x44x35(mm)

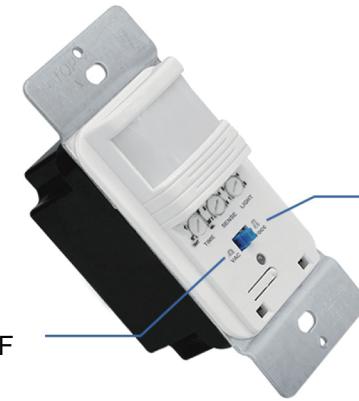


Model No.	Rated Voltage	Power Supply	Max.Load	Min.Load	Dimming Method	Application
			LED/Incandescent	LED/Incandescent		
USP-DS07	120V, 60Hz	Live Wire	200W/600W	3W/15W	Phase Cut (Leading)	Single Pole or 3-Way

0-10V Dimmer

Model No.	Rated Voltage	Power Supply	Max.Load	Dimming Method	Application
USP-DS07L	120-277V, 50/60Hz	Live Wire	600VA	0-10V	Single Pole or 3-Way

Regular Sensor Switch

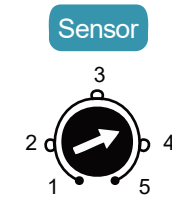


Vacancy Mode
Manual ON, Auto OFF

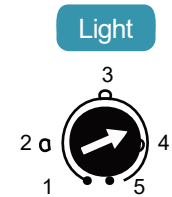
Occupancy Mode
Auto ON, Auto OFF



Time Delay Knob
Intervals of 15 Seconds (Test), 1 Minute, 5 Minutes, 15 Minutes, 30 Minutes of Inactivity



Sensor Sensitivity Range Knob
Adjust the Sensitivity Setting to Desired Dection Range



Ambient Light Level Knob
Adjust the Sensor to Turn on the Light at Desired Ambient Light Level



Model No.	Rated Voltage	Power Supply	Coverage Range	Operation Humidity Range	Time Delay Adjustment	HP Rating
USP-OS02	120-277V, 50/60Hz	Live Wire or Neutral & Live Wire	180°	95%RH, Non-Condensing	15 Secs to 30 Mins	1/6 HP

Application	Load Capacity		
Single Pole	120V, 300W LED	800W/VA@120V Fluorescent Lamp Rapid Start	1200W/VA@277V Fluorescent Lamp Rapid Start