

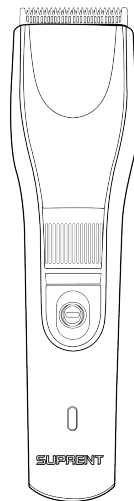
**SUPRENT**  
Inspire the Next You

This user manual tries to ensure the accuracy of the information, please kindly point it out for our improvement in the future, if there is any errors on the images or the texts. We'd be very appreciated for your support and effort.

In addition: If the technique of the trimmer has been improved, it will be upgraded and updated in the new version as well as the specification without announcement.

Brand Owner: Shenzhen Eukey E-Business Co., Ltd  
Address: Room 201, Building A, Qianwan No.1 Road,  
Qianhai Shengang Hezuoqu, Shenzhen, China  
Tel: +1 888 2821842  
Email: support@suprent.com

**SUPRENT**  
Inspire the Next You



BT475BX | SUPRENT Beard Trimmer

## **CONTENTS**

---

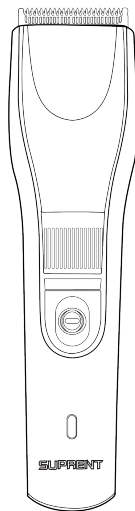
Notes Before Using .....	1
Parts Name .....	2
How To Use .....	3
How To Use .....	4
Cleaning And Maintenance .....	5
Cautions .....	6
Warranty Certificate .....	7

## NOTES BEFORE USING

Here with information concerns your health and safety. It is obligatory to learn about all instructions for use and safety information before first usage of the trimmer.

- Connect the power supply adaptor to AC mains supply 100-240 V.
- Disconnect the power supply adaptor from the mains supply outlet when not in use or before cleaning.
- The supplying cord should not hang over the edge of a table or desktop, nor touch hot surface.
- Do not touch the power supply adaptor with wet hands, especially when plugging or unplugging it from the mains supply outlet.
- For the operation with mains use only the adaptor supplied with the beard trimmer.
- Connect only to easily accessible mains supply outlet.
- Do not cover the adaptor; it can lead to dangerous temperature increase.
- Do not use during bath.
- Never immerse the device and cord in water or other liquids.
- Do not place the beard trimmer on wet surface or cloth during operation.
- Do not place or store the device in the area where it can fall into water.
- Do not use the device with damaged comb attachment. It can cause injuries hazard.
- This appliance is not intended for use by persons (including children) with reduced physical, sensory or mental capabilities, or lack of experience and knowledge.
- Children should be supervised to ensure that they do not play with the appliance.
- Do not apply not recommended attachments.
- Put the towel around the neck to avoid getting the cut hair under the collar.
- Use the beard trimmer only as intended according to the here with instructions.

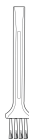
## PARTS NAME



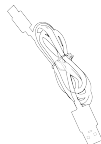
A Limit Comb  
(1-10mm)



B Limit Comb  
(11-20mm)



Cleaning Brush

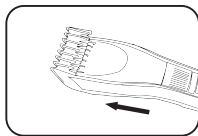
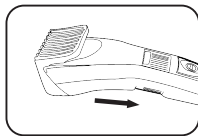


Type C (USB)  
Charging Cable

## HOW TO USE

### Loading Accumulators And Cordless Operatio Comb Attachments Inserting/Replacing

- (1) In order to load the device move the ON/OFF switch to "OFF" position. Insert the plug of the adapter into appropriate mains supply outlet (100-240 V), the LED indicator will change from red to green when full charged. When fully loaded the hair clipper can operate more than 90 inutes.
- (2) It is possible to select one of two comb attachments:
  - The comb A can cut hair for 20 cutting lengths from 1-10mm, 0.5 mm per set.
  - The comb B can cut hair for 20 cutting lengths from 11-20mm, 0.5 mm per set.
- (3) Select the attachment according to the length of cutting.
- (4) Insert it into the side guiding grooves of the clipper.
- (5) Replace one attachment removing it and inserting another as described-above.
- (6) Turn right the cutting length adjustment knob , to increase the length of cutting or left to reduce it.



## HOW TO USE

### Cutting And Beard Trimming With Comb.

Make sure that the appliance is fully charged when you start to cut. Only use appliance on clean, dry hair. Do not use it on freshly washed hair.

- (1) Comb the beard in the direction of growth.
- (2) Slide the beard trimmer comb into the guiding grooves
- (3) When you are trimming for the first time, start at the maximum trimming length setting to familiarize yourself with the appliance. Switch on the appliance.
- (4) Switch on the appliance.
  - Move the appliance through the hair slowly.
  - To trim in the most effective way, move the appliance against the direction of hair growth.
  - Since all hair does not grow in the same direction, you need to move the appliance in different directions.
  - Make sure that the flat part of the comb is always fully in contact with the scalp to obtain an even result.
  - To achieve a good result with curly, sparse or long hair, use a comb to guide the hair towards the appliance.



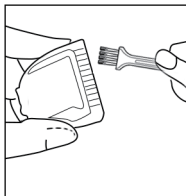
### Cutting Hair Without Attachment

You can cut the hair in uniform length of 0.5–1 mm without comb attachment.

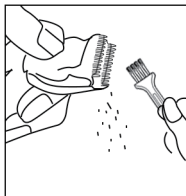
- (1) For clipping the hairline of bristle and whiskers, neck shaving:
  - Move the hair clipper slowly along hair.
  - Turn the device so, that the back part was directed upwards.
  - Place the edge of the cutting head without comb attachment on desired length of bristle hairline.
- (2) Move down the clipper in operation.



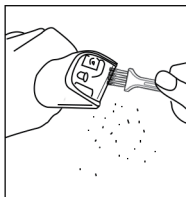
## CLEANING AND MAINTENANCE



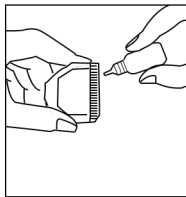
- ① Clean off the hair bits on blades.



- ② Between the blades to press the cleaning handle to clean off the hair bits.



- ③ Clean off the hair bits on machine body.



- ④ One drop to each arrowhead.

1. While cleaning the devices with a wet cloth, do not clean it with corrosive solution in any condition. Do not immerse the clipper in the water.
2. Please keep the beard trimmer away from the children.
3. Please note that this clipper may become warm during operating or charging, it is normal. When using, don't hold the power softine, in order to prevent possible accidents.
4. If the non-detachable part of the cord is damaged, it should be replaced by the producer or at a proper service point or by a qualified person in order to avoid any hazards.

## TECHNIC PARAMETER

**Motor's voltage:** DC 3.7V

**Charging time:** 1.5 hours

**Working time:** >90 minutes

**Rated power:** 2 W

## Warranty Certificate

Product Name	Beard Trimmer
Product Model	BT475BX
Date of Purchase	
Purchase Store	
Dealer Stamp	
Customer Name	
Customer Phone	
Customer Address	
Zip Code	

## Maintenance Records

Maintenance Date	Fault Conditions	Service Location	Maintenance Results