

# Indoor LED Hydroponic System

Model: ID-IG301



## Important Safety Instructions

1. Please use the power adapter with output voltage of 12V and current of 3A to charge.
2. To reduce the risk of electric shock, do not replace the plug.
3. Always unplug the garden kit from an electrical outlet before cleaning the water tank or replacing the water pump.
4. Never operate the garden kit if the cord or plug is damaged, has been submerged in water or is not functioning properly. If any of these conditions occur, please send an email to [support@idooworld.com](mailto:support@idooworld.com).
5. Keep the cord away from heated surfaces.
6. This product is intended for household and residential use only. Do not use outdoors.
7. Do not allow the light panel touch water.
8. Do not place or submerge the electrical outlet, cord, plug, or light panel cover in water or other liquid when cleaning.
9. To prevent damaging the unit, make sure no electrical parts are directly submerged in water. If any water is spilled or dispersed over any electrical parts, thoroughly dry all cables and electricity-related parts.
10. Do not attempt to assemble the unit when it is operating.
11. Warranty will be voided if the unit is dismantled or tampered with.
12. This device is not intended for use by persons (including children) with reduced physical, sensory, or cognitive capabilities or those lacking experience and knowledge, unless they are supervised or guided on the use of the device by a person responsible for their safety. Children should be supervised when operating this unit.
13. 4L of water should be added to the water tank, any volume of water below this amount will reduce the effectiveness of the water pump.
14. Please clean the water pump at least once a month and keep the water tank clean.
15. Please ensure there are no plant roots trapped or entering the water pump; you may trim the roots prior to cleaning the water pump.
16. Please ensure that there are no plant branches or leaves touch the fan.
17. The highest position of the light panel is 11 inches, which means that when deciding on which seeds to use you should select plants that are comfortably able to reach maturity within this height level.
18. Water must be touch the seedling sponge during the early stages of planting.
19. All buttons require one-touch for operation.
20. Please ensure that water in the tank is filled to 4L before powering the unit.

# Product Introduction

## 1. Overview

Power pack

Fan

Extendable rod  
(Max height 11 inches)

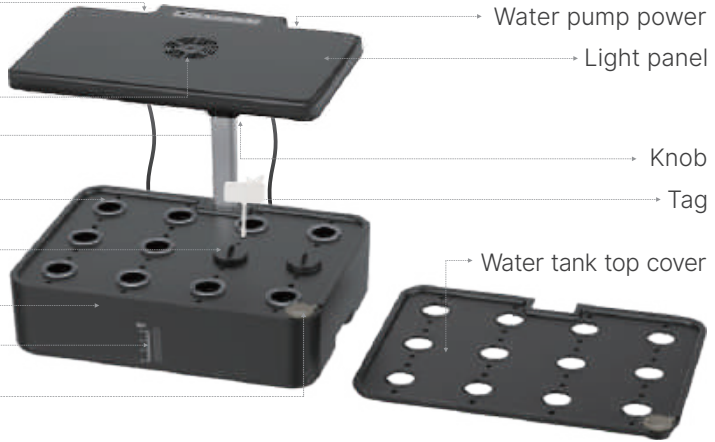
Basket container

Cover

Water tank

Water level

Water inlet



## 2. Specification

Fan Speed: 2500r/m

Input: 12V---3A

Operating Voltage: 12V

Standby Current: ≤30uA

Material: ABS

Water Tank Capacity: 4L

Product Weight: 1.8kg/3.96lb

Power Adapter: 100V-240V~ 50/60Hz

Fan Noise: ≤40dB

Pump Input: DC 5V 300mA

Pump Flow: 170L/h

Light Panel: NOT Waterproof

Working Temperature: 15°C - 30°C/59°F- 86°F

Product Size: 35\*26\*24.5cm/13.8\*10.23\*9.64inch

## 3. Included in Package



24 x Sponge



12 x Basket



1 x A Solid Nutrients



1 x B Solid Nutrients



12 x Plastic Hat



12 x Tag



1 x Extendable Pod



1 x Plug Adapter



1 x Rubber Stopper



6 x Cover



1 x Instruction Card



12 x Basket Label

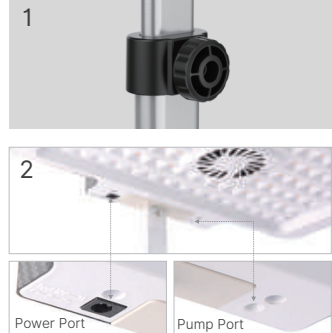


1 x Manual

## Instructions

### 1. How to Raise and Lower the Light Panel

To elevate or lower the Light Panel, turn the knob on the back of the upper rod to adjust its height. The lower rod section (13 cm/5.12 inches) does not move and is designed to remain firmly attached to the water tank once inserted. When planting a new seed pod kit, the Light Panel should be set to the lowest possible position.



### 2. Connect each cable in its proper place.

There are two cables, one for the water pump and one for the power source.

## Operation Procedure

### Step 1: Add Water

Rotate the lip of the water inlet. Pour tap water or bottled distilled water through the hole.

Do not use well water (which may interfere with the nutrient ingredients) or softened water (as it contains levels of sodium that are usually harmful to plants).

If the water level is below 1.5 L, there will be a loud sound; top up the water level to stop the noise.

For best results, maintain the water level at 4L or above.



**Note:** Before all the roots of the plant are strong enough to absorb water, maintain the water level at 4L or above to ensure that the sponge is in contact with the water.

### Step 2: Add Nutrients

Fill the bottle of A solid nutrients with room temperature tap water or bottled distilled water and shake until well mixed, repeat for the bottle of B solid nutrients as well.

Add 20 mL of the A solution and 20 mL of the B solution into the water tank.



### Nutrient Feeding Tips:

1. Adding too much nutrient solution may be harmful to your plants.
2. Always top up the water level when adding nutrients. Ensure that 5 mL of A solution and 5 mL of the B solution must be dissolved into 1 L of water.

For best results, top up the water level in your unit regularly.

3. Do not use well water or softened water. Most well waters contain a high amount of dissolved solids that upset the balance of our nutrients while softened water adds sodium. This can result in the plants suddenly turning brown or growing poorly.

**Shelf Life:** Nutrient particles have a shelf life of up to 2 years in an unopened bottle if stored at proper temperature and away from sunlight.

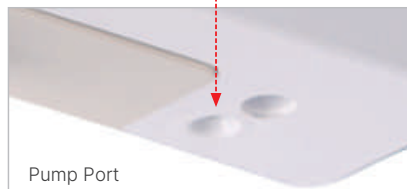
Well-mixed nutrient solutions have a shelf life of up to 5 months if stored away from sunlight.

### Step 3: Plug-In

Do not plug in the adapter if the water tank is empty.

The power indicator light will turn red once the adapter is plugged in, indicating that the light panel can now be controlled.

Once the power indicator light turns red, press the power button to turn it on; the indicator light will turn green, and the device will operate in Vegetables mode (16h-on-and-8h-off cycle). In the meantime, the water pump and the fan will activate by default. The pump will run in its default mode (30min-on-and-30min-off cycle).



## Method of Planting Seedlings

The garden kit does not include seeds. Select local seeds of a well-known brand.

### Step 1

- Put 3-4 seeds into the wet sponge. (Some seeds germinate in less than 24 hours, some may take 1-4 weeks.)
- Place the sponge into the planting basket.
- Place the basket label and seedling cover in sequence on the planting basket.

Tip:

1. The basket label helps to prevent the sponge from developing mold/algae.
2. The seedling cover is to help the seeds germinate.



### Step 2

- Place the planting basket into the basket container.
- Pour water through the inlet till the water level reaches the bottom of the planting basket.



### Step 3

After the seed germination, it is recommended to keep only one seedling. (Growing two or more seedlings in the same sponge may result in poor growth due to insufficient nutrients.)



Tip 1: Watch the water level, keep the water level at 4L.

Tip 2: 5 mL of the A solution and 5 mL of B solution must be dissolved in 1 L of water.

Tip 3: A louder pump sound means that the water level has dropped below 1.5 L. Please add water.

Tip 4: When you plant larger plants, reserve space for them by leaving some basket containers free. Remember to cover these empty spots with a cover (provided).



## Control Panel Settings



Power



Fan&Water



Vegetables



Flowers&  
Fruits

**Power:** Once the device is plugged in, the power indicator light will turn red. Press the power button to turn it on; the indicator will turn green. The device has a memory function, so, it will enter the last selected mode.

Press the power button to turn it off completely (it will not turn on automatically).

**Fan/Water mode:** If the Fan&Water mode is on, this button can be pressed to deactivate it for 10 hours. It will resume its 30min-on-and-30min-off cycle thereafter. Press it again to turn the fan and pump back on. Press the Power button to turn off the fan/water pump entirely. Press and hold the Fan&Water mode 3 seconds to turn off the fan only.

**Tip:** When the Fan&Water pump is on, the indicator light will be blue.

**Vegetables mode:** Press this button and it will run on a 16h-on-and-8h-off cycle. Press again to turn it off.

Under this mode, the LED lights will shine red/white/blue light.

**Flower/Fruits mode:** Press this button and it will run on a 16h-on-and-8h-off cycle. Press it again to turn it off.

Under this mode, the LED lights will shine red/white light.

### LED Light Mode Switch

1. You can easily alternate between two modes; when in Vegetables mode, press Flowers&Fruits button to switch to Flowers/Fruits mode, and vice versa. The cycle will reset after each switch.

2. When in Vegetables mode, press the Vegetables button to deactivate the mode for 10 hours, this instruction also applies for Flowers/Fruits mode. After the allotted time, the mode will reactivate.

**This feature is designed is to protect the plant in the instance a person forgets to reactivate the light back after a long period.**

3. If the light affects your sleep, you can turn it off by pressing the current mode; the light will automatically re-activate after 10 hours. Do not turn off the power as it will prevent the light from re-starting automatically.

**Memory function:** This product will resume the last selected mode the next time it is activated. This is regardless of whether it is powered off or in standby mode.

# Gardening Tips for Maximum Harvests

## Germination

Check the seed information for optimal temperature and days to germination. Plant 3 or 4 seeds per sponge. Some seeds germinate in less than 24 hours while others may take 2 to 4 weeks to germinate.

**Note:** Plants have seasonal, period, and regional characteristics. Characteristics of different plants differ. Temperature, light, and atmospheric humidity all impact the plant's growth. Planting seeds that are suitable for local growth in the current season is highly recommended.

The basket lid helps regulate moisture and temperature for optimal germination. Leave them on until the plants have grown to nearly touching the lid before removing.

Plant fewer than 12 pods of large plants, like tomatoes and peppers, to allow more space for them. Leave space between seed pods to allow enough room for each plant to spread out.

However, plants are impacted by temperature. Cold weather plants, for example, salad greens germinate better in cooler weather. Heat lovers like tomatoes and peppers will germinate faster in warmer temperatures (above 70°F). Even though they may take a bit longer, your seeds will still germinate.

**Transplant: Transplant only after rootstocks appear around the sponge.**

**Split the sponge to take one seedling out and move it to another pot.**

**Put the sponge back and only keep one seedling in it to allow sufficient nutrition.**



## Pruning

Do not raise your lights but rather lower your plants! You will achieve more compact, beautiful growth and bigger harvests if you prune plants to keep the lights closer to all plants.

Fast-growing plants make gardeners want to raise the light panel too soon. Resist this urge! Pruning the plant just above a new leaf set and leaving the lights low will ensure the slow-growing plants in your garden to get all the light they need to flourish.

Prune often to maintain a healthy garden, but never take off more than 1/3 of each individual plant at a time.





Plants compete for light. Left untended, more aggressively growing plants may actually block enough light to suppress growth of their slower-growing neighbors which may eventually die due to the lack of light. Spreading leaves must be trimmed to make sure that slow-growing plants get enough light to thrive and produce big yields.

Finally, pruning = harvesting. Each time you prune you get to enjoy fresh herbs in a salad, soup, on a pizza or sandwich. Also, a full, lush garden looks much better than one giant spindly plant surrounded by straggly light-starved neighbors. Pruning also releases a wonderful scent. So, prune!

## **Lights**

Plants love light! Always keep your grow lights as close to your plants as possible. Plant tops should be 1-2 inches below the lights.

Always check to see if you can prune plants instead of raising grow lights. After pruning, lower your lights back down to within 1-2 inches of plant tops if possible.

## **Pollinating**

Since most people do not have bees in their home, you will need to start pollinating your fruiting plants (tomatoes, peppers, etc.) once they begin to flower, approximately 4 to 6 weeks after planting). To pollinate, use one or more of the following methods:

1. Place an open hand inside the plant branches and gently move your hand back and forth to shake the plant and spread the pollen.
2. Use a cotton swab or fine brush to gently rub the flowers on different plants to enhance the cross-pollination effect.

## **Flowering and Fruiting**

1. Make sure to use Flowers/Fruits mode.
2. Change the water and add water & nutrients in the correct ratio once a week to make sure the plant can absorb enough potassium to be able to flower and fruit.

## **Harvesting**

The garden kit works best with a harvesting method called "cut and come again." Simply put, you enjoy frequent small harvests and watch the plants rapidly regrow and ready to be harvested again and again.

Enjoy frequent, smaller harvests for the first month or two until the plants mature and larger harvests are available.

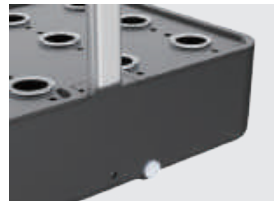
Harvest often to maintain a healthy garden but never take more than 1/3 of each individual plant at a time.

For salad greens, cut the top 2 inches off the entire garden or harvest large leaves individually by cutting them off at the base of the plant.

## Device Maintenance

### Changing Water

1. In a high temperature environment where water evaporates faster, the concentration of the nutrient solution will be higher; change the water after about 7-15 days.
2. Once the plants bloom, change the water once a week to ensure that the potassium content is sufficient. There is a drain hole at the back of the water tank. Remove the rubber plug to let the water flow out.



### Cleaning Pump

Clean the water pump at least once a month.

Before cleaning, turn the power off.

- Step 1: Remove the filter cover of the water pump.
- Step 2: Rinse it with water ONLY. Any washing liquid will harm the nutrition balance.
- Step 3: Install it back after cleaning.



Do NOT plug the adapter when there is no water in the water tank, it will shorten the life of the pump.

Important Note: During the planting process, if there are dead or badly growing plants, remove them to prevent root erosion bacteria from affecting the growth of other plants. If root rot has occurred, it is recommended to clean and disinfect the water tank to avoid affecting other plants.

### Where to Place Your Garden

On a sturdy, water-tolerant surface.

In a 59° F - 86° F (15-30° C) environment (optimal).

Beyond the reach of children and pets.

Away from direct sources of heat (stove, furnace vents, e.g.,) or cold (window drafts, A/C vents, e.g.,).

Indoor Garden Kit does not need additional light or a sunny window. In fact, too much direct sunlight can overheat your plants.

## Frequently Asked Questions & Answers

### 1. Why do only a few plants grow and then wither quickly?

- a. The seeds you purchase make a difference. For best results, buy seeds from reliable manufacturers and avoid seeds that are not suitable for water hydroponic devices.
- b. Be sure to add the correct proportion of nutrient solution to water.
- c. Place them in a 59°F-86°F (15°C-30°C) environment.

## 2. Why does the pump start with noise?

- The noise is caused by the unpleasant air in the water pump when it is used for the first time. It can be eliminated by continuously working for 3 to 5 minutes or restarting it multiple times.
- Remove the filter cover to check whether there is a jam inside.
- When the water volume is below 1.5L, add more water to 3.5L-4L; this will stop the noise from occurring.

## 3. Can sponges be reused?

It is reusable when the stems of a plant are pulled out of the sponges. However, it is not recommended to do so as it will not be as good as the first usage. We have a specific link if you want to purchase additional sponges.

## 4. Does it kill the plant while removing it from a sponge (if I prefer to move it to a pot, for example)?

Usually, it won't kill the plants. Although it is better to wait until it's vigorous and when the survival rate is high.

## 5. Why does it not germinate?

It can vary depending on the temperature. You can try to grow it in the soil to test whether it is the seed problem.

## 6. Why does it not bloom or bear fruit?

Make sure the nutrition is enough. Keep in mind to add water while adding a proportionate amount of nutrients.

## 7. How can you prevent the sponge from getting moldy or developing algae?

12 basket labels are included in the package to prevent the sponge from developing moldy/algae. You can also cover the sponge with an opaque film, such as tin foil.



## Warranty (1-Year Period)

The manufacturer's warranty is void under the following circumstances but not limited to:

- Improper or inadequate maintenance or modification.
- Accident, misuse, abuse, contamination, or other external causes.
- The use of unspecified adapter and accessories.
- Loss or damage in transit.
- Damages that occurs as a result of one's failure to follow the instructions.
- This warranty does not apply to expendable or consumable parts and does not extend to any product from which the serial number has been removed.

## Customer Service

We have an award-winning warranty, exchange, and customer service team that guarantees hassle-free solutions to any issue you might have within the 24 business hours.

- ☎ **Tel: +1(951)751-2590 (US ONLY)**  
Monday-Friday 9:00AM-4:30PM  
**1800 69 7367 (AU ONLY)**  
Monday-Friday 9:00AM-6:00PM (AEST)
- ✉ **Email: support@idooworld.com**

### FCC Regulatory Compliance

This device complies with part 15 of the FCC Rules. Operation is subject to the following two conditions: (1) This device may not cause harmful interference, and (2) this device must accept any interference received, including interference that may cause undesired operation. Warning: changes or modifications not expressly approved by the party responsible for compliance could void the user's authority to operate the equipment.

Note: This equipment has been tested and found to comply with the limits for a Class B digital device, pursuant to Part 15 of the FCC Rules. These limits are designed to provide reasonable protection against harmful interference in a residential installation. This equipment generates, uses and can radiate radio frequency energy and, if not installed and used in accordance with the instructions, may cause harmful interference to radio communications.

However, there is no guarantee that interference will not occur in a particular installation.

If this equipment does cause harmful interference to radio or television reception, which can be determined by turning the equipment off and on, the user is encouraged to try to correct the interference by one or more of the following measures:

- Reorient or relocate the receiving antenna.
- Increase the separation between the equipment and receiver.
- Connect the equipment into an outlet on a circuit different from that to which the receiver is connected.
- Consult the dealer or an experienced radio/TV technician for help.

### ISED Regulatory compliance

This device complies with Industry Canada licence-exempt RSS standard(s). Operation is subject to the following two conditions: (1) This device may not cause interference, and (2) This device must accept any interference, including interference that may cause undesired operation of the device.

Le présent appareil est conforme aux CNR d'Industrie Canada applicables aux appareils radio exempts de licence. L'exploitation est autorisée aux deux conditions suivantes:

(1) l'appareil ne doit pas produire de brouillage, et (2) l'utilisateur de l'appareil doit accepter tout brouillage radioélectrique subi, même si le brouillage est susceptible d'en compromettre le fonctionnement.

### US Importer: JOICOM CORPORATION

14129 The Merge Street, Building 3 Unit A, Eastvale, CA 92880

### Manufacturer: Shenzhen Ruiyi Business Technology Co., Ltd.

Qianhai Complex A201, Qianwan Road 1, Qianhai Shenzhen-Hong Kong Cooperation Zone, Shenzhen, P.R.China