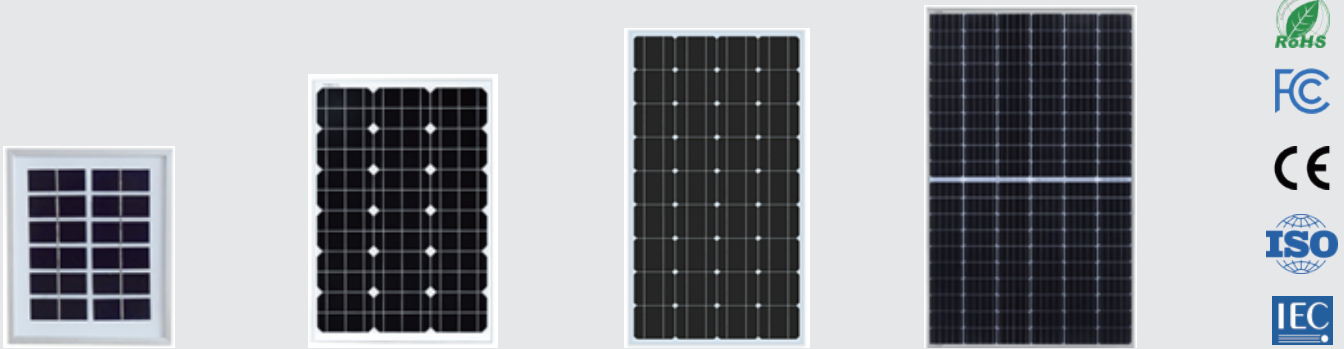


Xinpuguang@_Rigid Series - Monocrystalline modules



Why Choose Xinpuguang@_Rigid Series-Monocrystalline modules?

Our solar panels are certified by FCC, RoHS, CE, ISO, IEC. Advanced security, qualified quality, environmental protection, and energy-saving. Xinpuguang@_Rigid Series-Monocrystalline module is constructed with high-performance monocrystalline solar cells, which have a conversion efficiency of more than 21% under sunny weather conditions. It provides a long service life and is virtually maintenance-free. Using tempered glass, EVA film with excellent weather resistance and TPT backplane, and a high-quality aluminum frame. Outdoor service life is guaranteed, up to more than 25 years.

为什么选择Xinpuguang@_Rigid系列-单晶组件?

我们的太阳能电池板有FCC, RoHS, CE, ISO, IEC认证。高级安全、品质合格、环保节能。Xinpuguang@_Rigid系列单晶组件采用高性能单晶太阳能电池，在晴朗的天气条件下转换效率高达21%以上，使用寿命长，几乎无需维护。采用钢化玻璃、耐候性优良的EVA膜及TPT背板，优质铝边框。户外使用寿命有保障，可长达25年以上。

☆ Features 特征

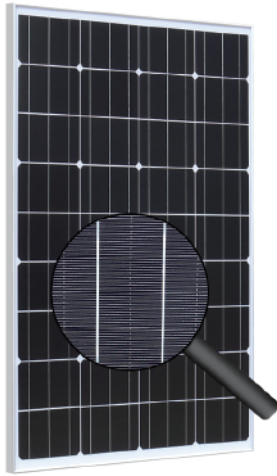
Weather-proof

Rugged design to withstand high winds (2400Pa), hail and snow load (5400Pa). Heavy-duty anodized frame that provides strong protection for the panel structure. The junction box with IP65 waterproof rating can effectively resist the long-term erosion in harsh rainy and humid weather.

防风雨

坚固耐用的设计，可承受大风（2400Pa）、冰雹和雪荷载（5400Pa）。重型阳极氧化框架，为面板结构提供强力保护。接线盒防水等级IP65，可有效抵抗恶劣阴雨潮湿天气的长期侵蚀。





High efficiency

Made of high-efficiency monocrystalline cells, the cell conversion rate is as high as 23%. High quality tempered glass. Bypass diodes reduce power drop caused by shadows and ensure excellent performance in low-light environments.

高效率

采用高效单晶电池制成，电池片转换率高达23%左右。高品质钢化玻璃。旁路二极管可减少阴影引起的功率下降。在弱光环境下的性能亦表现出色。

Easy Installation

Easy to install with pre-drilled holes on the back of panel for fast mounting and securing. Can be matched with various solar panel brackets.

易于安装

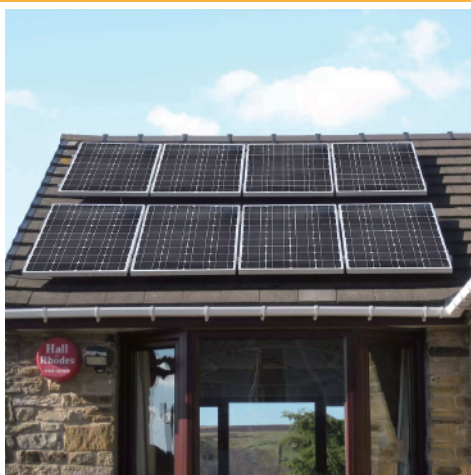
面板背面有预钻孔，便于快速安装和固定。可与各种太阳能电池板支架配套使用。



☆ Application 应用

High in power and durable, Xinpuguang@ Rigid Series - Monocrystalline modules are the perfect addition to any off-grid application. Supported by a wide range of mounting options including flat surface, pole, and wall installation. Common applications include large photovoltaic power plants, industrial and commercial power plants, small off-grid photovoltaic systems, RVs, campers, SUVs, maritime, residential rooftops, remote farms, disaster relief, traffic signs, etc.

Xinpuguang@_Rigid系列单晶组件功率高、耐用，是任何离网应用的完美补充。支持多种安装选项，包括平面、电杆和墙壁安装。常见应用包括大型光伏电站、工商业电站、小型离网光伏系统、RV、露营车、SUV、海事、住宅屋顶、远程农场、救灾、交通标志等。



Monocrystalline Glass solar panel

单晶玻璃太阳能板

Electrical parameter | STC 电性能参数 (5w~25w)

Rated Power 功率输出	Pmax(W)	5	10	20	25
Model No. 产品型号	/	PG-GSP5W	PG-GSP10W	PG-GSP20W	PG-GSP25W
Cell type 电池片类型	/	156 Mono	156 Mono	156 Mono	156 Mono
Operating Voltage 最大功率点的工作电压	Vmp(V)	18	18	18	12
Operating Current 最大功率点的工作电流	Imp(A)	0.28	0.56	1.11	2.08
Open Circuit Voltage 开路电压	Voc(V)	21.6	21.6	21.6	14.4
Short Circuit Current 短路电流	Isc(A)	0.31	0.61	1.22	2.29
Performance Tolerance 功率公差	(%)	±5%	±5%	±5%	±5%
Boundary dimension 外形尺寸	mm	240*175*18	325*240*18	505*295*18	425*340*18

Electrical parameter | STC 电性能参数 (30w~50w)

Rated Power 功率输出	Pmax(W)	30	35	40	50
Model No. 产品型号	/	PG-GSP30W	PG-GSP35W	PG-GSP40W	PG-GSP50W-1
Cell type 电池片类型	/	156 Mono	156 Mono	156 Mono	156 Mono
Operating Voltage 最大功率点的工作电压	Vmp(V)	18	15	17.4	18
Operating Current 最大功率点的工作电流	Imp(A)	1.67	2.33	2.30	2.78
Open Circuit Voltage 开路电压	Voc(V)	21.6	18	20.88	21.6
Short Circuit Current 短路电流	Isc(A)	1.83	2.57	2.53	3.06
Performance Tolerance 功率公差	(%)	±5%	±5%	±5%	±5%
Boundary dimension 外形尺寸	mm	630*345*18	440*500*18	665*520*25	680*510*25

Electrical parameter | STC 电性能参数 (50w~100w)

Rated Power 功率输出	Pmax(W)	50	80	90	100
Model No. 产品型号	/	PG-GSP50W-2	PG-GSP80W	PG-GSP90W	PG-GSP100W
Cell type 电池片类型	/	125Mono	161 Mono	156 Mono	125 Mono
Operating Voltage 最大功率点的工作电压	Vmp(V)	16	16.5	18	18
Operating Current 最大功率点的工作电流	Imp(A)	3.13	4.85	5.00	5.56
Open Circuit Voltage 开路电压	Voc(V)	19.2	19.8	21.6	21.6
Short Circuit Current 短路电流	Isc(A)	3.44	5.33	5.5	6.11
Performance Tolerance 功率公差	(%)	±5%	±5%	±5%	±5%
Boundary dimension 外形尺寸	mm	545*535*25	950*530*25	1480*345*30	1160*530*25

Electrical parameter | STC 电性能参数 (100w~120w)

Rated Power 功率输出	Pmax(W)	100	100	115	120
Model No. 产品型号	/	PG-GSP100W-1	PG-GSP100W-2	PG-GSP115W	PG-GSP120W
Cell type 电池片类型	/	161 Mono	166 Mono	156 Mono	166 Mono
Operating Voltage 最大功率点的工作电压	Vmp(V)	18	18	36	21.5
Operating Current 最大功率点的工作电流	Imp(A)	5.56	5.56	3.19	5.58
Open Circuit Voltage 开路电压	Voc(V)	21.6	21.6	43.2	25.8
Short Circuit Current 短路电流	Isc(A)	6.11	6.11	3.51	6.10
Performance Tolerance 功率公差	(%)	±5%	±5%	±5%	±5%
Boundary dimension 外形尺寸	mm	1020*515*20	955*530*25	1000*670*30	1130*530*25

Electrical parameter | STC 电性能参数 (135w~190w)

Rated Power 功率输出	Pmax(W)	135	150	180	190
Model No. 产品型号	/	PG-GSP135W	PG-GSP150W	PG-GSP180W	PG-GSP190W
Cell type 电池片类型	/	156 Mono	166 Mono	166 Mono	125Mono
Operating Voltage 最大功率点的工作电压	Vmp(V)	18	30	17.6	36
Operating Current 最大功率点的工作电流	Imp(A)	7.5	5.00	10.3	5.28
Open Circuit Voltage 开路电压	Voc(V)	21.6	36	21.1	43.2
Short Circuit Current 短路电流	Isc(A)	8.25	5.50	11.20	5.81
Performance Tolerance 功率公差	(%)	±5%	±5%	±5%	±5%
Boundary dimension 外形尺寸	mm	1450*670*35	1040*795*30	1370*700*30	1580*808*35

Electrical parameter | STC 电性能参数 (200W)

Rated Power 功率输出	Pmax(W)	200	200	200	200
Model No. 产品型号	/	PG-GSP200W-1	PG-GSP200W-2	PG-GSP200W-3	PG-GSP200W-4
Cell type 电池片类型	/	125Mono	161Mono	156 Mono	166Mono
Operating Voltage 最大功率点的工作电压	Vmp(V)	36	20	18	19.8
Operating Current 最大功率点的工作电流	Imp(A)	5.56	10	11.11	10.10
Open Circuit Voltage 开路电压	Voc(V)	43.2	24	21.6	23.7
Short Circuit Current 短路电流	Isc(A)	6.11	11	12.22	10.80
Performance Tolerance 功率公差	(%)	±5%	±5%	±5%	±5%
Boundary dimension 外形尺寸	mm	1580*808*35	1670*690*35	1460*670*35	1545*700*35

Electrical parameter | STC 电性能参数 (250W~330W)

Rated Power 功率输出	Pmax(W)	250	270	300	330
Model No. 产品型号	/	PG-GSP250W	PG-GSP270W	PG-GSP300W	PG-GSP330W
Cell type 电池片类型	/	156Mono	156Mono	166 Mono	166Mono
Operating Voltage 最大功率点的工作电压	Vmp(V)	30	30	29.7	33
Operating Current 最大功率点的工作电流	Imp(A)	8.34	9.0	10	10
Open Circuit Voltage 开路电压	Voc(V)	36	36	35.64	39.6
Short Circuit Current 短路电流	Isc(A)	9.18	9.9	11	11
Performance Tolerance 功率公差	(%)	±5%	±5%	±5%	±5%
Boundary dimension 外形尺寸	mm	1520*990*35	1620*990*35	1550*1045*35	1720*1045*35

Electrical parameter | STC 电性能参数 (400W~500W)

Rated Power 功率输出	Pmax(W)	400	430	450	500
Model No. 产品型号	/	PG-GSP400W	PG-GSP430W	PG-GSP450W	PG-GSP500W
Cell type 电池片类型	/	166Mono	166Mono	156 Mono	166Mono
Operating Voltage 最大功率点的工作电压	Vmp(V)	39.6	20	41.25	42.8
Operating Current 最大功率点的工作电流	Imp(A)	10	10	10.84	11.69
Open Circuit Voltage 开路电压	Voc(V)	47.52	24	49.7	51.7
Short Circuit Current 短路电流	Isc(A)	11	11	11.36	12.28
Performance Tolerance 功率公差	(%)	±5%	±5%	±5%	±5%
Boundary dimension 外形尺寸	mm	2055*1045*35	2055*1045*35	2120*1052*40	2185x1098x40

*It's a part of the specifications and models of the solar panels. We can design and provide products according to the customer's demand.

*以上为我们公司的一部分太阳能板的规格及型号。我们可以根据客户要求设计及定制。

Structural performance 结构性能

Solar cell 太阳能电池片	125 /156 /161 /166 Mono
Surface 面板	tempered glass
EVA(EVA)	Through the Rhine test 通过莱茵测试
Junction Box 接线盒/稳压盒	MC4Junction Box / Voltage regulator box
Output Interface 输出接口	USB /DC/MC4

Temperature characteristics 温度特性

Standard Test Conditions 电池标称工作温度 (NOTC)	45±2°C
Short Circuit Current Temp 温度系数 (Sic)	+0.050%/°C
Open Circuit Voltage Temp 温度系数 (Vic)	-0.30%/°C
Max. Power Temp 温度系数 (Plax)	-0.39%/°C

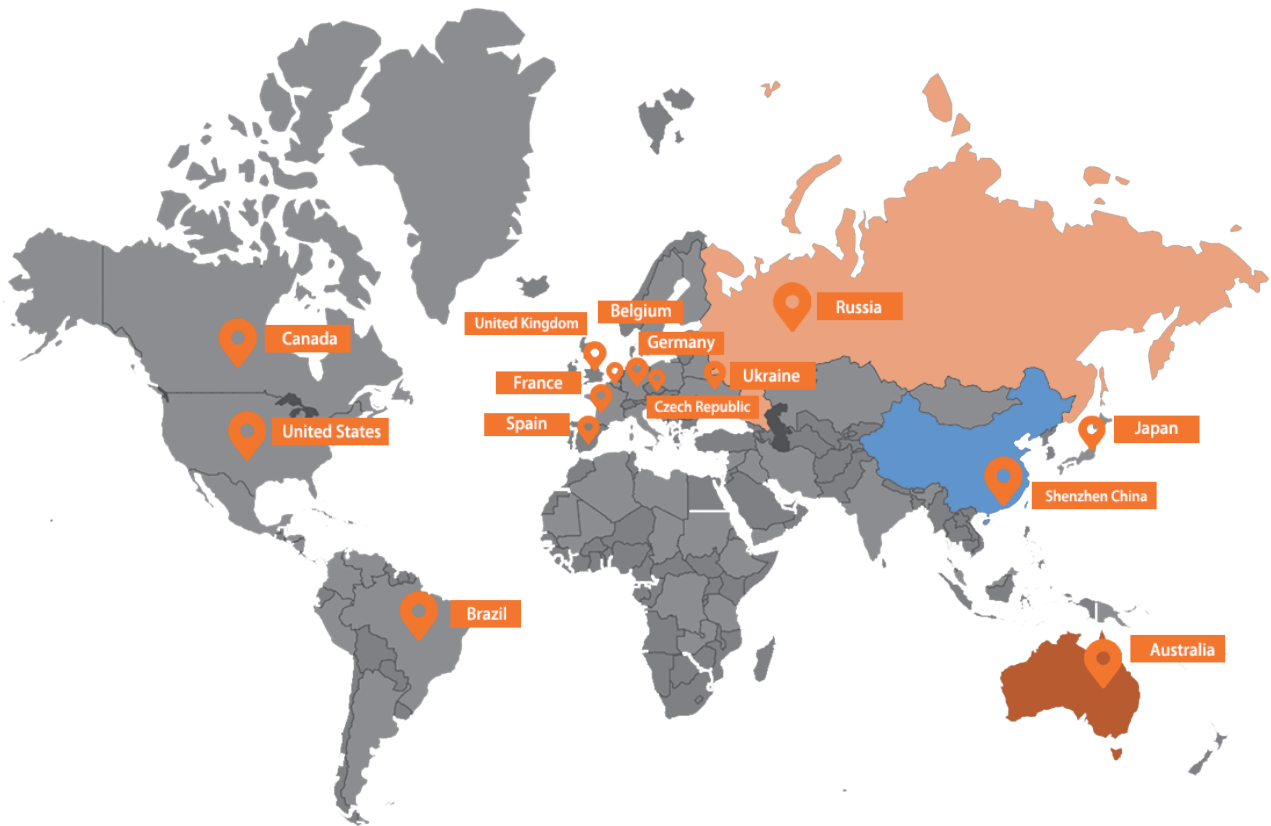
Limit parameter 极限参数

Operating Temperature 工作温度	-40~ +85°C
Max.System Voltage 最大系统电压	1000V DC

* 标准测试条件：（大气质量 AM1.5，辐照度 1000W/m²，电池温度25°C）下的测量值。

* Standard test conditions measured values (irradiance 1000 W/m², cell temperature 25 °C, atmospheric mass AM1.5).

Global Markets Distribution



Contact us:

Company: Shenzhen Solarparts Inc.

Shenzhen Puguang Solar Energy Co.,Ltd.

Address: 4th Floor,Building A3,Xinglian Industrial Park, Pingxing North Road,
PinghuTown,Longgang District, Shenzhen 518112 China.

Phone: +86-755-28720791 Fax: +86-755-85233441 Mobile: +86-13923729619

Website: www.isolarparts.com Email: Philip@isolarparts.com



QR Code for Official Website
www.isolarparts.com



QR Code for On-line Shopping Sotore
www.xinpuguangsolar.com