



**SOLARParts®**  
For Consumable Energies

**13 years specialized solar panel manufacturer**  
Passed BSCI / ISO9001/ ISO14001/ CE/ ROHS.

# CATALOGUE

Get more information

[www.isolarparts.com](http://www.isolarparts.com)

Shenzhen Solarparts Co.,Ltd.  
Made in China

**2024-2025**  
Dedicated to the  
Photovoltaic Industry



## Contact us



Tel:+86-13923729619  
Fax:+86-75585233441



401, Bldg B, 3th Road, Xinglian industrial Park,  
Hehua community, Pinghu Street, Longgang  
District, Shenzhen City 518111 China



[isolarparts.com](http://isolarparts.com)



[info@isolarparts.com](mailto:info@isolarparts.com)

### Dedicated To Consumable Energies:

Such as Marine, Boats,Yachts,RV,Camping,Off-grid  
system,Outdoor,Solar/Wind Hybrid,BIPV,Roof Application.



Shenzhen Solarparts Co.,Ltd.

# Content Guide

## About Solarparts



### Company Profile

SOLARPARTS, founded in 2011, has been committed to the business philosophy of “quality for survival and integrity for development”, and to the R & D, manufacturing and sales of crystalline silicon solar panels and photovoltaic application products. We provide OEM and ODM services, and is able to meet the targeted needs of customers in an comprehensive, effective and accurate way. Solarparts has developed a wide range of adapted products for RVs, yachts, outdoor applications, balcony systems, and camping.

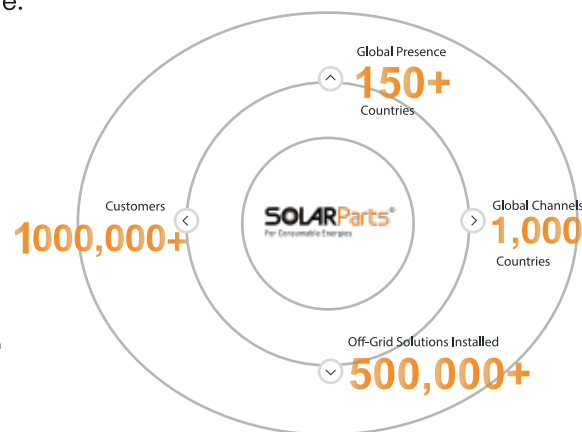
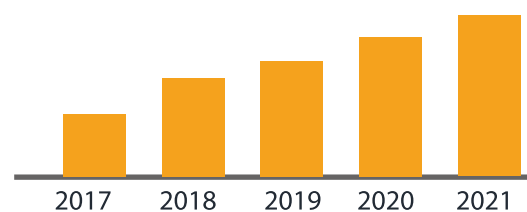
### SOLARPARTS Culture

SOLARPARTS has been committed to the business philosophy of “quality for survival and integrity for development”. SOLARPARTS build its corporate culture by “absorbing sunshine, focusing energy and returning the earth to a clean place”. SOLARPARTS is seeking to be a micro multinational enterprise and national “little giant”.

### Professional Talent Team

SOLARPARTS has gathered a group of professional technology talents and comprehensive management talents in various fields such as photovoltaic new energy, energy conservation and environmental protection, with good scientific and technological research and development capabilities and the ability to transform scientific and technological achievements. SOLARPARTS’ technology talent pool and research platform have been further improved, laying a solid foundation for the cultivation of talent teams and the construction of talent pools in the future.

### Global Off-Grid PV System Solution Leader & Innovator



### Qualifications and Certifications

SOLARPARTS has mastered various solar cell packaging and production technologies, holds multiple solar panel industry patents, and attaches great importance to innovation and research and development. SOLARPARTS has been selected as the national high-tech enterprise and the specialized, sophisticated, innovative enterprise producing new and unique products. We have been audited for BSCI and hold multiple invention patents. The products have comply with multiple certification standards such as ISO, ROHS, CE, etc.

ISO9001、ISO14001 and Product Patent



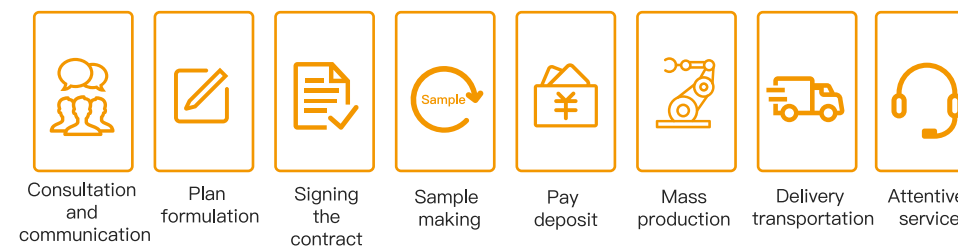
business license



### SOLARPARTS Global Exhibitions



### SOLARPARTS One-Stop Service Process

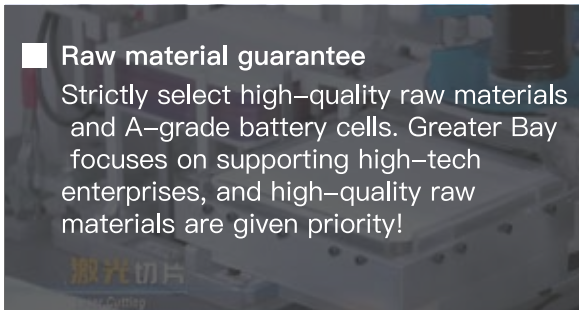




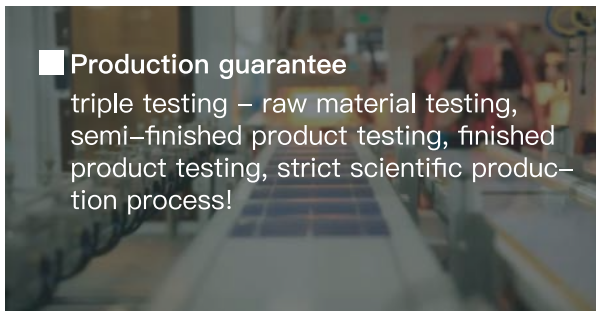
## Efficient and Precise Production Standards



Advanced quality control system ensures reliable quality of every component delivered  
SOLARPARTS has strong production capabilities and a professional automated manufacturing factory. We can customize solar panels with different specifications such as power, voltage, current, size, shape, and process according to customer needs and product positioning. We support sample testing, high quality assurance, and fast delivery!



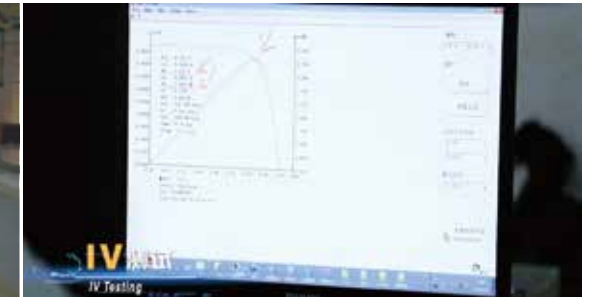
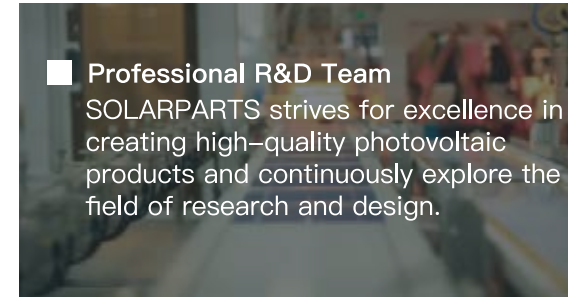
■ **Raw material guarantee**  
Strictly select high-quality raw materials and A-grade battery cells. Greater Bay focuses on supporting high-tech enterprises, and high-quality raw materials are given priority!



■ **Production guarantee**  
triple testing – raw material testing, semi-finished product testing, finished product testing, strict scientific production process!



■ **Equipment guarantee**  
automatic string welding machine, automatic lamination packaging equipment, cell power test sorter, battery string power tester, finished product power tester, etc.!



## Efficient Warehouse Logistics System



## More Value-Added Services



Consultation and quotation  
one-to-one quotation from full-time customer service.



Design and proofing  
Design and proofing according to actual needs.



Technical support  
Free technical consultation and support by phone/WeChat/email, etc.!



After-sales service  
warranty, damaged replacement, worry-free after-sales service!



Main Products



Micro Balcony System



Yacht off-grid solar systems



Solar CCTV camera



RV off-grid solar systems



CA Series Portable solar panel



IN Series Portable solar panel



Solar street light



Non-standard customized solar panels



Flower shape solar panel



Solar-Wind Hybrid System

|  |       |
|--|-------|
| 1.Content Guide                            | 01-04 |
| 2.Main Products                            | 05    |
| 3.Solarparts@ Micro Balcony System         | 07-08 |
| 4.Off-Grid Solar Panel System              | 09-17 |
| ■ Off-grid Solar Panel Kits                |       |
| ■ Boguang@_F Series                        |       |
| ■ Boguang@_R Series                        |       |
| ■ Lixin@Off-Grid Home Solar Systems        |       |
| ■ Solar and Wind Hybrid Generation Systems |       |
| ■ Photovoltaic solar heating system        |       |
| ■ Solar Roof Exhaust Fan                   |       |
| 5.Solar Power Projects and Services--EPC   | 18-21 |
| 6.Xinpuguang@_Rigid Series                 | 22-23 |
| 7.Flexible Solar Panel                     | 24-26 |
| ■ Solarparts@_Flexible Series              |       |
| ■ Xinpuguang@_Flexible Series              |       |
| ■ Solarparts@_Sandwich_Flexible Series     |       |
| 8.Portable Solar Panels                    | 27-34 |
| ■ Roicht@_IN Series                        |       |
| ■ Roicht@_BA Series                        |       |
| ■ PCB Folding Box                          |       |
| ■ Roicht@_GL Series                        |       |
| 9.Small Solar Panel                        | 34-36 |
| ■ Keruft_Mini P Series                     |       |
| ■ Keruft_Mini E Series                     |       |
| 10.Solarparts@_Battery & Accessories       | 37-38 |



USA Warehouse



European Warehouse



# Solarparts@\_Micro Balcony System

Plug and Play On-Grid Micro Solar System



150-900W Designed for balcony energy

The system is very easy to install. No need to call a professional. Simply connect the solar panels in series and parallel to the micro-inverter. Then connect it to your home outlet and you're ready to go. Plug and Play!

When the sun shines, the solar panel set will produce DC voltage, and the micro grid tie inverter transforms the DC voltage to AC voltage, synchronizing with the utility grid power. It puts out power to the home grid, generating electricity and cutting your electric bill.



| Hanging Balcony Micro Grid-Connected System Configuration |               |             |                |       |                    |
|---|---------------|-------------|----------------|-------|--------------------|
| Model No.   | Specification | Solar panel | Micro inverter | Cable | Triangular Bracket |
| 240600  | 600W System   | 360W*2PCS   | 600W/230V      | 1 set | 4PCS               |
| 240800  | 800W System   | 450W*2PCS   | 800W/230V      | 1 set | 6PCS               |
| 240900  | 900W System   | 150W*6PCS   | 1200W/230V     | 1 set | 12PCS              |

| Foldable Balcony Micro Grid-Connected System Configuration |               |             |                |       |                  |
|--|---------------|-------------|----------------|-------|------------------|
| Model No.  | Specification | Solar panel | Micro inverter | Cable | Black Nylon Bind |
| 250600   | 600W System   | 150W*4PCS   | 600W/230V      | 1 Set | 1 Set            |
| 250900   | 900W System   | 150W*6PCS   | 1200W/230V     | 1 Set | 1 Set            |



| Solar Panel Electrical Parameters at (STC) (optional) |         |        |        |        |        |               |        |                       |
|---|---------|--------|--------|--------|--------|---------------|--------|-----------------------|
| Model No.   | Pmax(W) | Vmp(V) | Imp(A) | Voc(V) | Isc(A) | Dimension(mm) | Weight | Performance Tolerance |
| 20166   | 150W    | 19.8V  | 7.58A  | 23.76V | 8.33A  | 1140*700*25   | 7.5Kg  | ±5%                   |
| 20195   | 300W    | 29.7V  | 10.1A  | 35.64V | 11.1A  | 1555*1045*30  | 17Kg   | ±5%                   |
| 20207   | 450W    | 34.67V | 12.98A | 41.25V | 13.89A | 1909*1134*35  | 23.9Kg | ±5%                   |
| 20210   | 500W    | 38.43V | 13.01A | 46.12V | 14.3A  | 2094*1134*35  | 23.5Kg | ±5%                   |



Off-grid Solar Panel Kits

- Boguang@\_F Series
- Boguang@\_R Series
- Lixin@Off-Grid Home Solar Systems



The solar energy is converted into electric energy, and the load is powered by the solar charge and discharge controller, and the battery pack is charged at the same time; when there is no light, the battery pack supplies power to the DC load through the solar charge and discharge controller, and the battery also directly supplies the independent inverter.

Power supply, invert into AC power through an independent inverter, and supply power to the AC load.electric bill.



| Boguang@_F Series Solar Kit Configuration |                    |             |            |        |         |                  |          |
|---|--------------------|-------------|------------|--------|---------|------------------|----------|
| Model No.                                 | Module             | Solar Panel | Controller | Cable  | Adapter | Aluminum Bracket | Inverter |
| 20100                                     | 100W/12V Solar Kit | 100W*1PC    | 10A        | 2 sets | /       | 1 set            | optional |
| 20200                                     | 200W/12V Solar Kit | 100W*2PCS   | 20A        | 2 sets | 1 set   | 1 set            | optional |
| 20400                                     | 400W/12V Solar kit | 100W*4PCS   | 40A        | 2 sets | 1 set   | 1 set            | optional |
| 20500                                     | 500W/12V Solar kit | 100W*5PCS   | 50A        | 2 sets | 1 set   | 1 set            | optional |
| 20600                                     | 600W/24V Solar kit | 100W*6PCS   | 50A        | 2 sets | 1 set   | 1 set            | optional |
| 20800                                     | 800W/24V Solar Kit | 100W*8PCS   | 60A        | 4 sets | 1 set   | 1 set            | optional |



| Boguang@_R Series Solar Kit Configuration |                    |             |            |        |         |                  |          |
|---|--------------------|-------------|------------|--------|---------|------------------|----------|
| Model No.                                 | Specification      | Solar Panel | Controller | Cable  | Adapter | Aluminum Bracket | Inverter |
| 201100                                    | 100W/12V Solar Kit | 100W*1PC    | 10A        | 2 sets | /       | 1 set            | optional |
| 201150                                    | 150W/12V Solar Kit | 150W*1PC    | 20A        | 2 sets | /       | 1 set            | optional |
| 201200                                    | 200W/12V Solar Kit | 100W*2PCS   | 20A        | 2 sets | 1 set   | 1 set            | optional |
| 201300                                    | 300W/12V Solar Kit | 150W*2PCS   | 30A        | 2 sets | 1 set   | 1 set            | optional |
| 201400                                    | 400W/12V Solar kit | 100W*4PCS   | 40A        | 2 sets | 1 set   | 1 set            | optional |
| 201500                                    | 500W/12V Solar kit | 100W*5PCS   | 50A        | 2 sets | 1 set   | 1 set            | optional |
| 201600                                    | 600W/12V Solar kit | 150W*4PCS   | 60A        | 2 sets | 1 set   | 1 set            | optional |
| 201800                                    | 800W/24V Solar Kit | 100W*8PCS   | 60A        | 4 sets | 1 set   | 1 set            | optional |

| Lixin@Off-Grid Home Solar Systems Configuration 1 (300W-1200W) |                  |                     |                |                 |                  |        |              |       |
|--|------------------|---------------------|----------------|-----------------|------------------|--------|--------------|-------|
| Model No.  | Specification    | Solar Panel (Rigid) | Battery        | Hybrid Inverter | Aluminum Bracket | Cable  | PV Connector | Screw |
| 23300  | 300W/12V System  | 150W * 2PCS         | 200AH/12V      | 12V/1000W-230V  | Z-type, 1 set    | 3 sets | 1 set        | 1 set |
| 23400  | 400W/12V System  | 100W * 4PCS         | 200AH/12V      | 12V/1000W-230V  | Z-type, 1 set    | 3 sets | 1 set        | 1 set |
| 23600  | 600W/24V System  | 100W * 6PCS         | 200AH/12V*2PCS | 24V/2400W-230V  | Z-type, 1 set    | 3 sets | 1 set        | 1 set |
| 23601  | 600W/24V System  | 150W * 4PCS         | 200AH/12V*2PCS | 24V/2400W-230V  | Z-type, 1 set    | 4 sets | 1 set        | 1 set |
| 23800  | 800W/24V System  | 100W * 8PCS         | 200AH/12V*2PCS | 24V/2400W-230V  | Z-type, 1 set    | 4 sets | 1 set        | 1 set |
| 23900  | 900W/24V System  | 150W * 6PCS         | 200AH/12V*2PCS | 24V/2400W-230V  | Z-type, 1 set    | 4 sets | 1 set        | 1 set |
| 231000   | 1000W/24V System | 100W * 10PCS        | 200AH/12V*2PCS | 24V/2400W-230V  | Z-type, 1 set    | 4 sets | 1 set        | 1 set |
| 231201   | 1200W/24V System | 150W * 8PCS         | 200AH/12V*4PCS | 24V/2400W-230V  | Z-type, 1 set    | 4 sets | 1 set        | 1 set |

| Lixin@Off-Grid Home Solar Systems Configuration 2 (1KW-5KW) |  |            |            |            |            |
|---|--|------------|------------|------------|------------|
| Model No.   | 230001                                 | 230002     | 230003     | 230004     | 230005     |
| Components  |  |            |            |            |            |
| 300W Mono Solar Panel                                       | 2 Pieces                               | 4 Pieces   | 6 Pieces   | 9 Pieces   | 12 Pieces  |
| Combiner Box  | 2 in 1 out                             | 2 in 1 out | 2 in 1 out | 3 in 1 out | 4 in 1 out |
| Off Grid Inverter   | 1KW                                    | 2KW        | 3KW        | 4KW        | 5KW        |
| 12V 200AH GEL Battery                                       | 1 Piece                                | 2 Pieces   | 4 Pieces   | 4 Pieces   | 8 Pieces   |
| DC Cable  | 100 Meters                             | 100 Meters | 200 Meters | 200 Meters | 200 Meters |
| MC4 Connector   | 4 Pairs                                | 4 Pairs    | 6 Pairs    | 6 Pairs    | 8 Pairs    |
| Mounting System   | Ground or Roof ( Customized Optional ) |            |            |            |            |

| Lixin@Off-Grid Home Solar Systems Configuration 3 ( 10KW-30KW) |  |                  |                  |                  |                  |
|--|--|------------------|------------------|------------------|------------------|
| Model No.  | 231000                                 | 231500           | 232000           | 232500           | 233000           |
| Components   |  |                  |                  |                  |                  |
| 380W Mono Solar Panel  | 27 Pieces                              | 36 Pieces        | 45 Pieces        | 60 Pieces        | 70 Pieces        |
| Combiner Box   | 3 in 1 out                             | 4 in 1 out       | 5 in 1 out       | 6 in 1 out       | 7 in 1 out       |
| Off Grid Inverter  | 10kVA                                  | 15kVA            | 20kVA            | 25kVA            | 30kVA            |
| 12V 250AH GEL Battery  | 16 Pieces                              | 16 Pieces        | 20 Pieces        | 40 Pieces        | 40 Pieces        |
| DC Cable   | 4mm2/400 Meters                        | 4mm2/400 Meters  | 4mm2/600 Meters  | 4mm2/800 Meters  | 4mm2/800 Meters  |
|  | 25mm2/100 Meters                       | 25mm2/100 Meters | 25mm2/200 Meters | 25mm2/200 Meters | 25mm2/200 Meters |
| MC4 Connector  | 10 Pairs                               | 12 Pairs         | 15Pairs          | 20 Pairs         | 25 Pairs         |
| Mounting System  | Ground or Roof ( Customized Optional ) |                  |                  |                  |                  |

| Lixin@Off-Grid Home Solar Systems Configuration 4 (1KW-10KW) |  |            |            |            |            |
|--|--|------------|------------|------------|------------|
| Model No.  | 22100                                  | 22300      | 22500      | 22800      | 221000     |
| Components   |  |            |            |            |            |
| 480W Solar Panel   | 2 Pieces                               | 6 Pieces   | 10 Pieces  | 16 Pieces  | 21 Pieces  |
| Combiner Box   | 1 Unit                                 | 1 Unit     | 1 Unit     | 1 Unit     | 1 Unit     |
| Off Grid Inverter  | 1kw                                    | 3kw        | 5kw        | 8kw        | 10kw       |
| 12V 200AH/250 GEL Battery                                    | 1 Piece                                | 2 Pieces   | 4 Pieces   | 4 Pieces   | 8 Pieces   |
| DC Cable   | 100 Meters                             | 100 Meters | 200 Meters | 200 Meters | 200 Meters |
| MC4 Connector  | 4 Pairs                                | 4 Pairs    | 6 Pairs    | 6 Pairs    | 8 Pairs    |
| Mounting System  | Ground or Roof ( Customized Optional ) |            |            |            |            |

## Solar-Wind Hybrid System



The two most abundant renewable energy sources are the sun and the wind. Combined and converted into a single energy source via artificial means, they are known as Solar-Wind Hybrid System. In this system, solar and wind energies are combined to produce green electricity.





300W-500W



Accessories

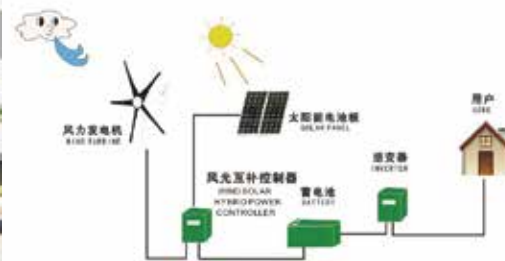


Solar-Wind Hybrid System Configuration

| Model No.         | 10300         | 10400         | 10450         | 10500         |
|-------------------|---------------|---------------|---------------|---------------|
| Item              | 300W System   | 400W System   | 450W System   | 500W System   |
| Solar Panel       | 150W*2PCS     | 100W*4PCS     | 150W*3PCS     | 100W*5PCS     |
| Wind Turbine      | 1PC           | 1PC           | 1PC           | 1PC           |
| Battery           | 200AH/12V*1PC | 250AH/12V*1PC | 200AH/12V*1PC | 200AH/12V*1PC |
| Controller        | 1 unit        | 1 unit        | 1 unit        | 1 unit        |
| Inverter          | 1 unit        | 1 unit        | 1 unit        | 1 unit        |
| Bracket           | 1 set         | 1 set         | 1 set         | 1 set         |
| Cable             | 5 sets        | 5 sets        | 5 sets        | 5 sets        |
| Small Accessories | 1 set         | 1 set         | 1 set         | 1 set         |

Accessories of Solar-Wind Hybrid System

| Item              | Specification  |
|-------------------|--|
| Solar Panel       | 100W: 100W/19.8V 1050*530*25mm<br>150W: 150W/19.8V 1140*700*25mm |
| Wind Turbine      | NE-500M2;500W/DC12V  |
| Battery           | 200AH/12V or 250AH/12V   |
| Controller        | 12/24-W500/S500; 500W  |
| Inverter          | 2000W/230V   |
| Bracket           | Aluminum alloy Z bracket   |
| Cable             | 4mm <sup>2</sup> /5mm <sup>2</sup> /16mm <sup>2</sup>            |
| Small Accessories | Screw,Nut,(M6)   |
| Terminal          | OT-60A   |



## Photovoltaic Solar Water Heating System



Make your life easier.

By providing up to 70% of a household's hot water through free energy from the sun. A photoelectric solar water heating system can reduce your annual energy bills.

Using more renewable energy from the sun rather than buying fossil fuels like gas or oil from a supplier will reduce your carbon footprint.







| 60L/80L Bill of Materials                 |   |          |  |
|---|---|----------|--|
| 60L: Model No. 11600; 80L: Model No.11800 |   |          |  |
| Type                                      | Specification   | Quantity | Remarks note                                     |
| Solar panel                               | 540W/41.62V 2279*1134*35m   | 2        |  |
| water heater                              | 80L;2-230V/50Hz weight: 25kg  | 1        |  |
| Cable                                     | photovoltaic system;red and black lines 1x4mm <sup>2</sup> ,20M each                      | 1        | photovoltaic connected solar water heater        |
|   | Brown/blue/yellow-green three-core cable, 3*2.5mm <sup>2</sup> , 1.5M, with ohmmeter plug | 1        | power grids is connected to a solar water heater |
| Packing box                               | Double pit; outer dimension; ;490*520*940mm; 6mm thick                                    | 1        |  |
| Middle box                                | Outer size;2295*1150*80mm; 6mm thick  | 1        |  |

## Solar Roof Exhaust Fan



Combined to produce green electricity

A roof mounted axial type solar powered active ventilation fan, driven by brushless dc motor and run for air exchanging, to improve air circulation in roof cavity or attic space freely at no cost.

Ideal for residential house, garage, basement, industrial workshop, livestock feeding shed, poultry house, agricultural green house,

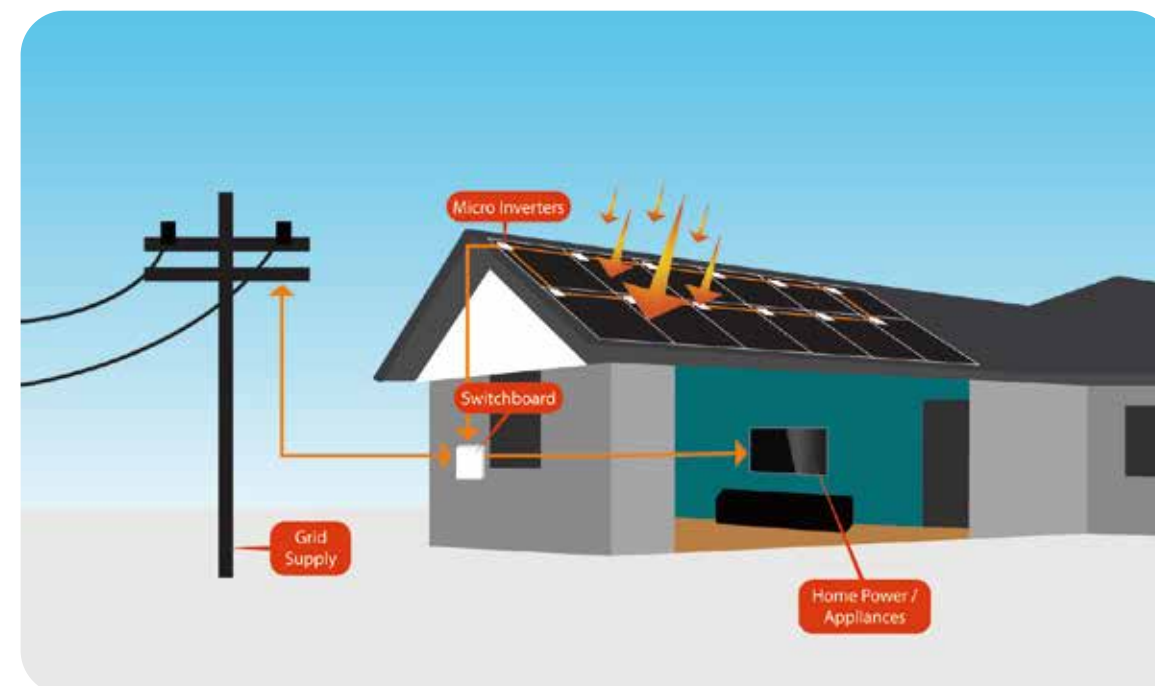




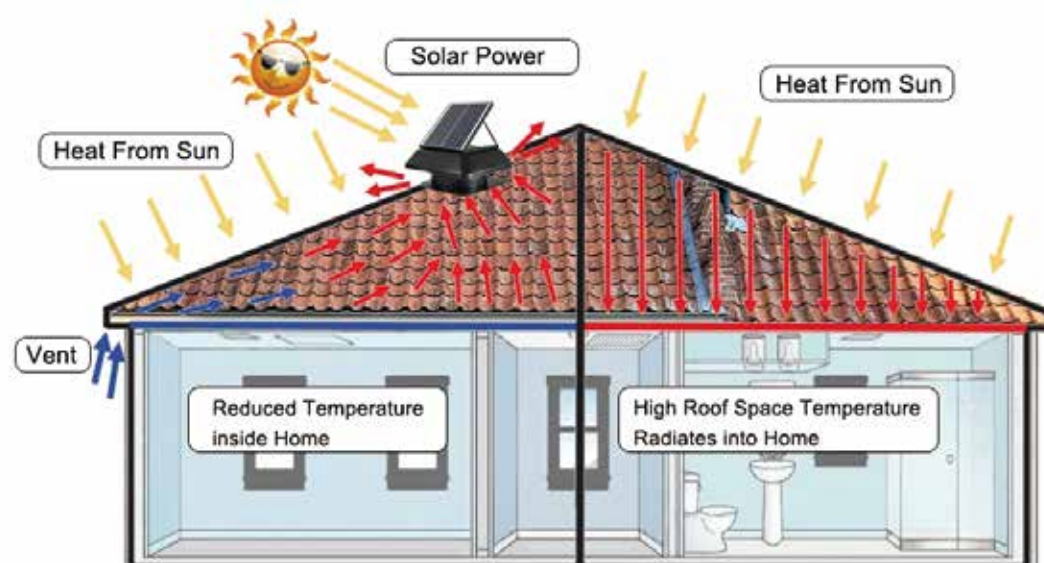


| Solar Roof Exhaust Fan Components List<br>Model No. 13140 |  |
|---|--|
| Solar Panel   | 18~ 50W polycrystalline solar panel  |
| Motor   | 18~ 22.5V brushless DC motor   |
| Fan Blades  | 12" / 14" Nylon- fiberglass fan blades, 7 pcs  |
| Air duct dia  | 315mm / 368mm  |
| Shape   | Round / Square fan cover, square fan base  |
| Fan Case  | Galvanized steel fan case with powder coating  |
| Color   | black/ white / orange / green  |
| Fan host size   | 530x530x255mm  |
| Work time   | sunny day hours, when sunlight is available( battery / electricity backup is available for running nonstop in sunless time ) |
| Optional accessory  | adapter, remote controller, manual switch, thermostat,   |
|   | fan guard  |

## Solar Power Projects And Services--EPC



The grid-connected photovoltaic power generation system can convert the DC power output by the solar cell array into AC power with the same amplitude, frequency and phase as the grid voltage, and realizes the connection with the grid and transmits electricity to the grid.







| 1.35KW On-Grid Solar Power Kit Components List<br>Model No. 23135 |                  |                                   |          |
|---|------------------|-----------------------------------|----------|
| Item  | Model            | Description                       | Quantity |
| 1   | Solar panels     | 450W/34.67V<br>1909mm*1134mm*30mm | 3 pcs    |
| 2   | On-Grid Inverter | 5KW/220VAC                        | 1 pc     |
| 3   | Connector        | MC4                               | 1 set    |
| 4   | Bracket          | Roof/Ground                       | 1 set    |
| 5   | Cable 1          | 4mm <sup>2</sup> PV cable         | 20m      |
| 6   | Cable 2          | 16mm <sup>2</sup> PV cable        | 20m      |
| 7   | Cable 3          | 4mm <sup>2</sup> Earth Wire       | 10m      |
| 8   | AC combiner box  | Protector                         | 1 set    |



| 3.15KW On-Grid Solar Power Kit Components List<br>Model No. 23315 |                  |                                   |          |
|---|------------------|-----------------------------------|----------|
| Item  | Model            | Description                       | Quantity |
| 1   | Solar panels     | 450W/34.67V<br>1909mm*1134mm*30mm | 7 pcs    |
| 2   | On-Grid Inverter | 5KW/220VAC                        | 1 pc     |
| 3   | Connector        | MC4                               | 1 set    |
| 4   | Bracket          | Roof/Ground                       | 1 set    |
| 5   | Cable 1          | 4mm <sup>2</sup> PV cable         | 20m      |
| 6   | Cable 2          | 16mm <sup>2</sup> PV cable        | 20m      |
| 7   | Cable 3          | 4mm <sup>2</sup> Earth Wire       | 10m      |
| 8   | AC combiner box  | Protector                         | 1 set    |



Keeping track with the market development, we are engaged in providing our clients EPC For Grid Connected Rooftop Solar PV Systems, Hybrid Rooftop Solar PV System and Off Grid Rooftop Solar PV System .

This power is then sent to a Solar Inverter with converts the DC electricity to AC power which can be used by your appliances. Any surplus power is then exported to the grid and credited against your electricity bill.

## Grid-connected EPC System



Effective and professional team

Our company has created a niche in the field of providing Solar Power Projects And Services. Keeping track with the market development, we are engaged in providing our clients EPC For Grid Connected Rooftop Solar PV Systems, Hybrid Rooftop Solar PV System and Off Grid Rooftop Solar PV System .

With the help of our team of adroit professionals, we render this service according to the exact needs of clients. Furthermore, we use advanced techniques with high precision in order to execute this service. It is highly demanded due to its swiftness, reliability and flexibility. like gas or oil from a supplier will reduce your carbon footprint.





| EPC For Grid Connected Rooftop Solar PV Systems<br>Model No.23170 |                         |
|---|-------------------------|
| Kind of Application   | Industrial              |
| Installation Method   | Roof Top                |
| Preferred Wattage   | 20 kW to 1 MW           |
| Size/Area   | 200 to 1000 Square Feet |
| Grid Type   | Grid Tie                |

| EPC For Hybrid Rooftop Solar PV System<br>Model No. 23180 |                         |
|---|-------------------------|
| Kind of Application                                       | Industrial              |
| Installation Method                                       | Roof Top                |
| Preferred Wattage   | 20 kW to 1 MW           |
| Size/Area   | 200 to 1000 Square Feet |
| Grid Type   | Hybrid-On Grid/Off Grid |

| EPC for Off Grid Rooftop Solar PV System<br>Model No. 23190 |               |
|---|---------------|
| Kind of Application   | Industrial    |
| Installation Method   | Roof Top      |
| Preferred Wattage   | 20 kW to 1 MW |
| Grid Type   | Off Grid      |

| Service Procedure  |
|--|
| Site survey, investigation, Design, Engineering, Energy Supply, Installation, Testing, Commissioning, Synchronizing and Maintenance of Solar PV Systems on Net Metering Basis on the Roofs of Buildings. |



### Xinpuguang@\_Rigid Series (5W-300W )



High in power and durable, Xinpuguang@ Rigid Series - Monocrystalline modules are the perfect addition to any off-grid application.

| Model No. | Pmax (W) | Vmp (V) | Size (mm)    | Weight (kg) | Performance Tolerance | Packing(mm)   | Efficiency | 40'HQ Container |
|-----------|----------|---------|--------------|-------------|-----------------------|---------------|------------|-----------------|
| 20320     | 320      | 38.1    | 1956*992*40  | 20.3        | ±5%                   | 1980*1010*100 | 20%        | 528pcs          |
|           |          |         |              |             |                       | 2pcs/carton   |            |                 |
| 20350     | 350      | 38.8    | 1956*992*40  | 20.3        | ±5%                   | 1980*1010*100 | 20%        | 528pcs          |
|           |          |         |              |             |                       | 2pcs/carton   |            |                 |
| 20360     | 360      | 39.1    | 1956*992*40  | 20.3        | ±5%                   | 1980*1010*100 | 20%        | 528pcs          |
|           |          |         |              |             |                       | 2pcs/carton   |            |                 |
| 20361     | 360      | 34.2    | 1540*1134*35 | 18.8        | ±5%                   | 1560*1150*90  | 20%        | 728pcs          |
|           |          |         |              |             |                       | 2pcs/carton   |            |                 |
| 20370     | 370      | 39.3    | 1956*992*40  | 20.3        | ±5%                   | 1975*1010*100 | 20%        | 528pcs          |
|           |          |         |              |             |                       | 2pcs/carton   |            |                 |
| 20400     | 400      | 39.6    | 2055*1045*35 | 23          | ±5%                   | 2075*1060*90  | 20%        | 572pcs          |
|           |          |         |              |             |                       | 2pcs/carton   |            |                 |
| 20450     | 450      | 41.52   | 2120*1052*40 | 23.5        | ±5%                   | 2140*1070*100 | 20%        | 480pcs          |
|           |          |         |              |             |                       | 2pcs/carton   |            |                 |
| 20500     | 500      | 42.8    | 2185*1098*40 | 25.3        | ±5%                   | 2210*1115*100 | 20%        | 480pcs          |
|           |          |         |              |             |                       | 2pcs/carton   |            |                 |
| 20540     | 540      | 41.62   | 2279*1134*35 | 28.5        | ±5%                   | 2300*1150*90  | 20%        | 620pcs          |
|           |          |         |              |             |                       | 2pcs/carton   |            |                 |

| Model No. | Pmax (W) | Vmp (V) | Size (mm)    | Weight (kg) | Packing (mm)                 | Efficiency | 40'HQ Container |
|-----------|----------|---------|--------------|-------------|------------------------------|------------|-----------------|
| 20010     | 10       | 18      | 330*245**18  | 0.8         | 1170*350*270<br>50pcs/carton | 20%        | 24300pcs        |
| 20020     | 20       | 18      | 505*295*18   | 1.53        | 610*540*330<br>25pcs/carton  | 20%        | 12600pcs        |
| 20030     | 30       | 18      | 630*345*18   | 2.23        | 660*500*380<br>20pcs/carton  | 20%        | 7680pcs         |
| 20040     | 40       | 17.4    | 665*520*25   | 3.8         | 700*330*550<br>10pcs/carton  | 20%        | 3840pcs         |
| 20050     | 50       | 16      | 545*535*25   | 3.2         | 580*330*570<br>10pcs/carton  | 20%        | 2424pcs         |
| 20060     | 60       | 16.5    | 650*540*17   | 3.5         | 685*250*575<br>10pcs/carton  | 20%        | 5120pcs         |
| 20080     | 80       | 16.5    | 950*530*25   | 5.5         | 990*180*560<br>5pcs/carton   | 20%        | 2160pcs         |
| 20100     | 100      | 18      | 1160*530*25  | 6.7         | 1175*545*70<br>2pcs/carton   | 20%        | 2376pcs         |
| 20101     | 100      | 18      | 1020*515*25  | 5.7         | 1135*530*70<br>2pcs/carton   | 20%        | 2376pcs         |
| 20102     | 100      | 18      | 955*530*25   | 5.5         | 970*545*70<br>2pcs/carton    | 20%        | 2904pcs         |
| 20150     | 150      | 30      | 1040*795*30  | 8.8         | 1060*810*80<br>2pcs/carton   | 20%        | 1456pcs         |
| 20200     | 200      | 18      | 1460*670*35  | 10.6        | 1480*695*90<br>2pcs/carton   | 20%        | 1092pcs         |
| 20201     | 200      | 19.8    | 1545*700*35  | 11.8        | 1565*715*90<br>2pcs/carton   | 20%        | 1092pcs         |
| 20250     | 250      | 30      | 1520*990*35  | 16.5        | 1540*1005*90<br>2pcs/carton  | 20%        | 728pcs          |
| 20300     | 300      | 29.7    | 1550*1045*35 | 17.8        | 1570*1060*90<br>2pcs/carton  | 20%        | 728pcs          |



### Flexible Solar Panel

- Solarparts@\_Sandwich\_Flexible Series
- Xinpuguang@\_Flexible Series
- Solarparts@\_Flexible Series

High light transmittance , high charging efficiency , good weatherresistance . It can be installed on the surface of the yacht arbitrarily ,RVS and roofs.



Solarparts@\_Flexible Series



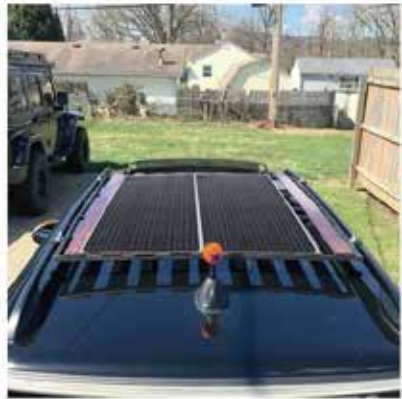
Xinpuguang@\_Flexible Series



Solarparts@\_Sandwich\_Flexible Series

#### Solarparts@\_Sandwich\_Flexible Series

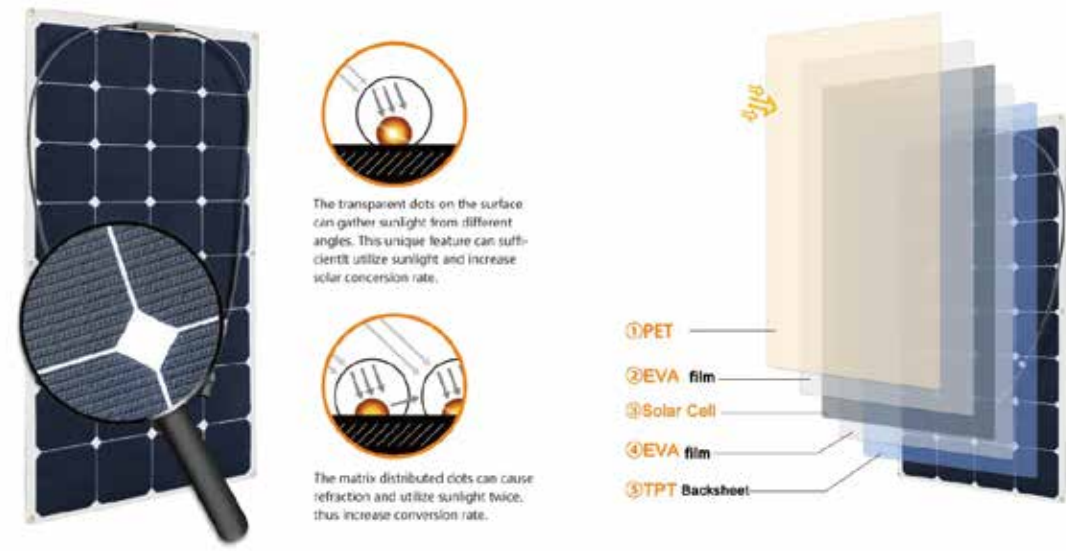
| Model No. | Pmax(W) | Vmp(V) | Size(mm)   | Weight (kg) | Performance Tolerance | Packing(mm) | Efficiency | 40'HQ Container |
|-----------|---------|--------|------------|-------------|-----------------------|-------------|------------|-----------------|
| 20140     | 50      | 18.7   | 830*370*4  | 1.585       | ±5%                   | 845*380*22  | 20%        | 6700pcs         |
| 20141     | 100     | 19.25  | 1065*545*4 | 2.995       | ±5%                   | 1080*555*22 | 20%        | 3600pcs         |
| 20142     | 150     | 19.25  | 1175*710*4 | 4.305       | ±5%                   | 1190*720*22 | 20%        | 2500pcs         |





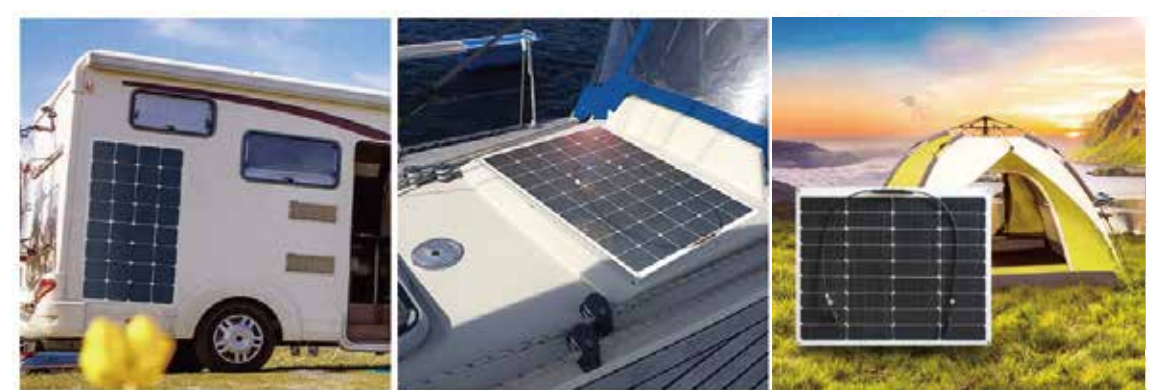
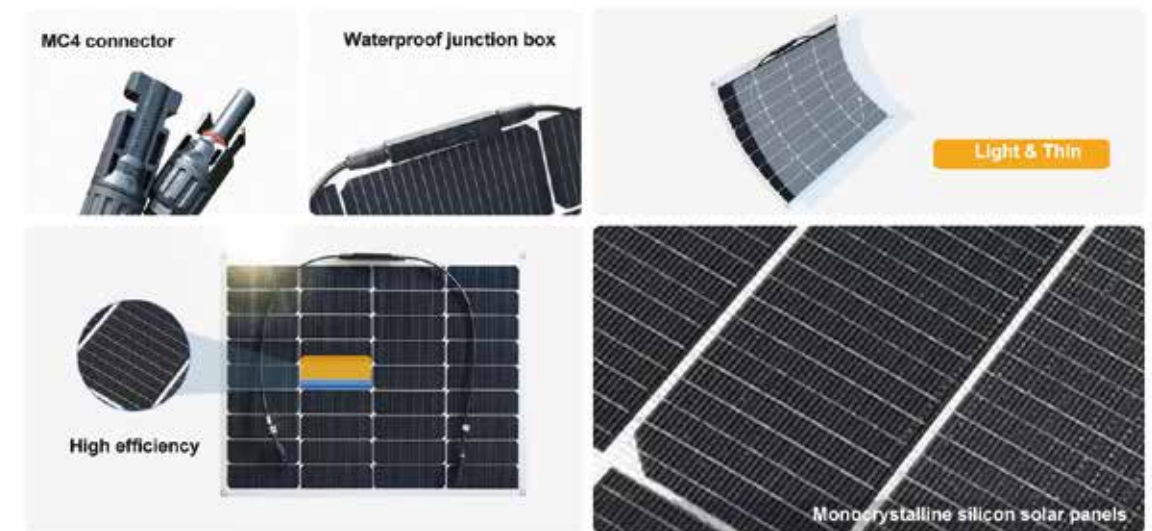
Solarparts@\_Flexible Series

| Model NO. | Pmax (W) | Vmp (V) | Size(mm)   | Weight (kg) | Performance Tolerance | Packing(mm) | Efficiency | 40'HQ Container |
|-----------|----------|---------|------------|-------------|-----------------------|-------------|------------|-----------------|
| 201020066 | 50       | 17.6    | 555*535*3  | 1.15        | ±5%                   | 575*545*30  | 22%        | 5544pcs         |
| 201020001 | 100      | 17.6    | 1050*540*3 | 2.31        | ±5%                   | 1070*550*30 | 22%        | 2772pcs         |
| 201020259 | 150      | 29.7    | 1185*795*3 | 3.46        | ±5%                   | 1205*805*30 | 22%        | 1386pcs         |
| 201020265 | 180      | 33      | 1315*795*3 | 4.15        | ±5%                   | 1335*805*30 | 22%        | 1232pcs         |



Xinpuguang@\_Flexible Series

| Model NO. | Pmax (W) | Vmp (V) | Size(mm)    | Weight (kg) | Performance Tolerance | Packing     | Efficiency | 40'HQ Container |
|-----------|----------|---------|-------------|-------------|-----------------------|-------------|------------|-----------------|
| 201010019 | 10       | 18      | 440*190*2.5 | 0.32        | ±5%                   | 450*200*231 | 20%        | 19000pcs        |
| 201010166 | 20       | 16      | 540*280*2.5 | 0.64        | ±5%                   | 560*290*23  | 20%        | 11400pcs        |
| 201010150 | 30       | 5       | 675*280*3   | 0.96        | ±5%                   | 695*290*23  | 20%        | 9120pcs         |
| 201010045 | 40       | 18      | 575*500*3   | 1.28        | ±5%                   | 595*510*23  | 20%        | 6840pcs         |
| 201010005 | 50       | 16      | 545*535*3   | 1.6         | ±5%                   | 565*545*23  | 20%        | 6840pcs         |
| 201010214 | 100      | 19.8    | 810*700*3   | 2.42        | ±5%                   | 825*710*50  | 20%        | 1120pcs         |





# Portable Solar Panel

## Roicht@\_IN Series



Upgraded ETFE Integrated-Lamination



Perc Monocrystalline solar cell  
Conversion rate 23.5%



Transparent ETFE  
Strong light transmittance  
lightweight and durable

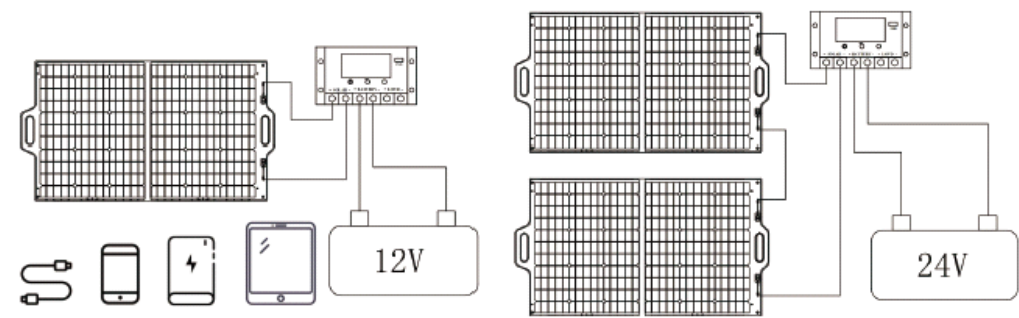


Waterproof fabric on the back,  
hard PCB, longer service life.



Broad compatibility & higher efficiency

Roicht@\_IN Series products are popular solar folding bag style in the market. They are made of the industry's latest upgraded high-density monocrystalline silicon, which is smaller in size and has a higher conversion rate. OEM according to your requirements.



| MODEL No. | Pmax (W ) | Vmp(V) | Unfolded Size(mm) | Folded Size(mm) | Weight(kg) | Packing(mm)  | 40'HQ Container |
|-----------|-----------|--------|-------------------|-----------------|------------|--------------|-----------------|
| 205030051 | 7         | 5      | 295*190*4         | 295*190*4       | 0.3        | 320*220*40   | 12000           |
| 205030032 | 14        | 5      | 395*300*4         | 300*205*17      | 0.5        | 320*220*40   | 12000           |
| 205030052 | 21        | 5      | 590*300*4         | 300*205*25      | 0.7        | 320*220*40   | 12000           |
| 205030030 | 28        | 5      | 790*300*4         | 300*205*30      | 0.9        | 320*220*40   | 12000           |
| 205030053 | 50        | 19.8   | 830*370*4         | 430*540*33      | 2.05       | 565x450x55   | 4500            |
| 205030049 | 100       | 19.8   | 1065*545*4        | 430*540*40      | 3.6        | 565x450x55   | 4500            |
| 203010141 | 100       | 19.8   | 1228*665*20       | 665*620*20      | 4.1        | 685x640x60   | 2310            |
| 205010146 | 150       | 19.8   | 1626*730*20       | 730*545*40      | 6.25       | 755*554*50   | 2680            |
| 205010147 | 200       | 19.8   | 2330*665*20       | 665*620*45      | 8          | 685*640*60   | 2310            |
| 205030056 | 260       | 19.8   | 2396*705*20       | 665*614*20      | 11.7       | 800*750*140  | 750             |
| 205030058 | 400       | 39.6   | 2396*1050*4       | 638*1050*45     | 18         | 1170*750*140 | 280             |







#### ■ Roicht@\_BA Series



Lightweight, easy to carry

Through the folding design, the portable solar panel has a smaller area, is more convenient to carry, and needs to accommodate less space. It can be directly charged by electronic devices such as mobile phones, tablets, camera computers, and portable power supplies.

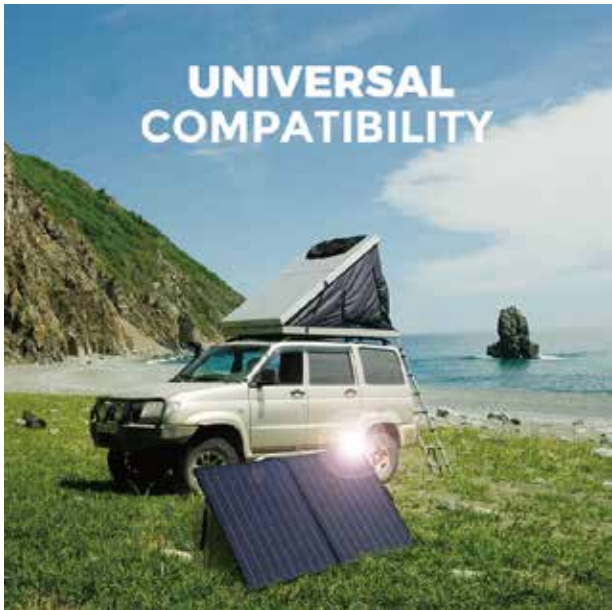
Adding a controller can directly use lead-acid batteries, lithium batteries and other vehicle-mounted batteries.

| Model No  | Pmax(W) | Vmp(V) | Unfolded Size(mm) | Folded Size(mm) | Weight (kg) | Packing(mm) | 40'HQ Container |
|-----------|---------|--------|-------------------|-----------------|-------------|-------------|-----------------|
| 205060031 | 40W     | 18     | 700*420*4         | 420*350*26      | 1.5         | 430x370x40  | 9720            |
| 205060032 | 60W     | 18     | 1065*420*4        | 420*350*31      | 2           | 430x370x40  | 9720            |
| 205060033 | 80W     | 18     | 1410*420*4        | 420*350*35      | 2.5         | 430x370x40  | 9720            |
| 205060034 | 100W    | 18     | 1780*420*4        | 420*350*40      | 3.2         | 430x370x40  | 9720            |





■ **PCB Folding Box**  
Foldable Solar Charger



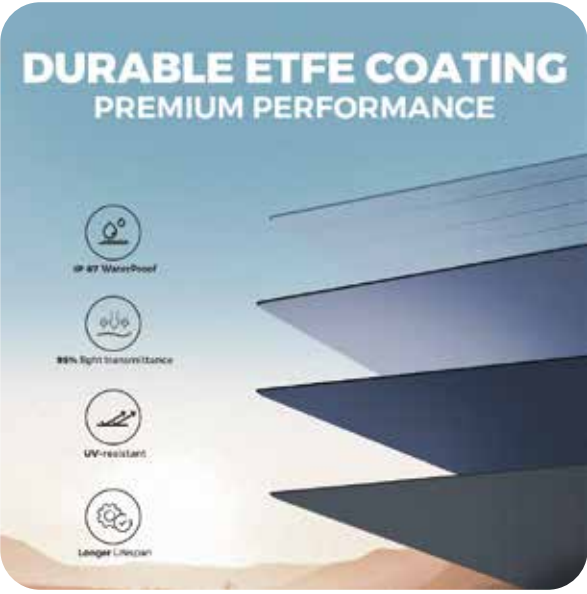
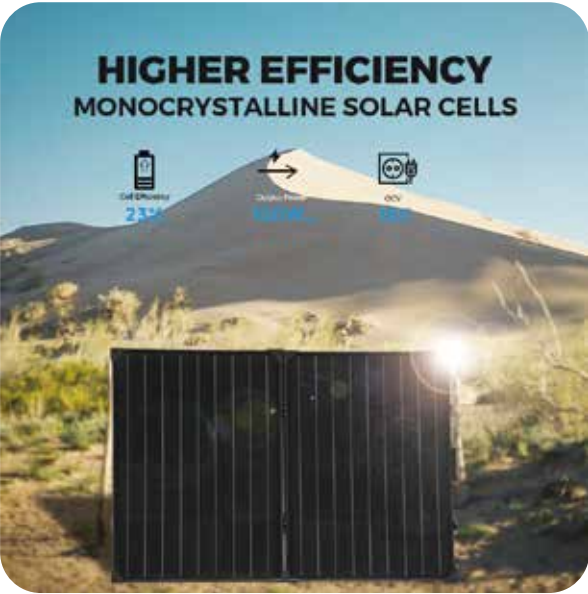
Convenient handle and the table's compact fold size

This folding camp table can be used as picnic table for outdoor, RV outside, BBQ, serving table for dining, small patio table for adult and kids, camping table for beach, fishing. It can also be regarded as a gift to your family and friends.

**NO FEAR OF SHADING**  
PERFORM WELL EVEN WITH SHADES\*



| Model NO  | Pmax(W) | Vmp (V) | Performance Tolerance | Unfolded /Folded Size (mm)  | Weight (kg) | Packing(mm) | Efficiency | 40'HQ Container |
|-----------|---------|---------|-----------------------|-----------------------------|-------------|-------------|------------|-----------------|
| 205040009 | 2x50W   | 18      | ±5%                   | 1025*680*25<br>680*510*53   | 5           | 700*530*70  | 20%        | 2628pcs         |
| 205040006 | 2x100W  | 19.8    | ±5%                   | 1065*1050*25<br>1050*530*53 | 6           | 1070*550*70 | 20%        | 1188pcs         |
| 205040008 | 2x150W  | 19.8    | ±5%                   | 1405*1400*25<br>1400*700*53 | 9.5         | 1420*720*70 | 20%        | 1452pcs         |





■ Roicht@\_GL Series

Rigid Folding Solar Panel



Easy transport and store

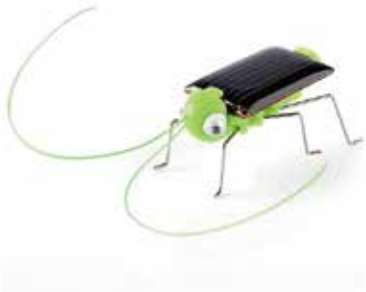
Roicht@\_GL Series Foldable solar panels integrated with highly efficient Monocrystalline panels, which makes it a perfect portable solar system.  
You can charge your devices anytime and anywhere. It can generate maximum power in the fixed area and aluminum frame and supporting bracket, easy to install to absorb the sunlight, just plug and play.

| Model NO  | Pmax(W) | Vmp (V) | Performance Tolerance | Unfolded /Folded Size (mm) | Weight (kg) | Packing(mm) | Efficiency | 40'HQ Container |
|-----------|---------|---------|-----------------------|----------------------------|-------------|-------------|------------|-----------------|
| 205010050 | 2x50W   | 18      | ±5%                   | 1025*680*25                | 7           | 700*530*70  | 20%        | 1848pcs         |
|           |         |         |                       | 680*510*53                 |             |             |            |                 |
| 205010010 | 2x100W  | 18      | ±5%                   | 1325*915*25                | 10          | 935*680*70  | 20%        | 1188pcs         |
|           |         |         |                       | 915*660*53                 |             |             |            |                 |



Small Solar Panel

■ Keruft Mini E Series--epoxy Resin Solar Modules





■ Keruft\_Mini P Series--PET Laminated Solar Modules

| Model No.    | Pmax(W) | Vmp(V) | Voc(V) | Isc(A) | Performance Tolerance | Size(mm)   |
|--------------|---------|--------|--------|--------|-----------------------|------------|
| PG-E-M0.125  | 0.125   | 0.5    | 0.6    | 0.275  | ±5%                   | 48*21*2.8  |
| PG-E-P0.125  | 0.125   | 0.5    | 0.6    | 0.275  | ±5%                   | 70*25*3    |
| PG-E-P0.2    | 0.2     | 0.5    | 0.6    | 0.44   | ±5%                   | 60*60*2.8  |
| PG-E-P0.21   | 0.21    | 0.5    | 0.6    | 0.46   | ±5%                   | 85*85*2.5  |
| PG-E-M0.245  | 0.245   | 3.5    | 4.2    | 0.077  | ±5%                   | 50*50*2.8  |
| PG-E-P0.275  | 0.275   | 5.5    | 6.6    | 0.055  | ±5%                   | 56*42*3    |
| PG-E-M0.3    | 0.3     | 6      | 7.2    | 0.064  | ±5%                   | 85*45*2.8  |
| PG-E-P0.45   | 0.45    | 4.5    | 23.76  | 0.11   | ±5%                   | 85*45*2.8  |
| PG-E-M0.5    | 0.5     | 5.5    | 6.6    | 0.099  | ±5%                   | 65*65*2.8  |
| PG-E-P0.65   | 0.65    | 5      | 6      | 0.143  | ±5%                   | 120*62*2.8 |
| PG-E-M1.26-1 | 1.26    | 18     | 21.6   | 0.077  | ±5%                   | 111*111*3  |
| PG-E-M1.26-2 | 1.26    | 6      | 7.2    | 0.231  | ±5%                   | 110*80*2.8 |
| PG-E-M1.5-1  | 1.5     | 6      | 7.2    | 0.275  | ±5%                   | 136*112*5  |
| PG-E-M1.5-2  | 1.5     | 5      | 6      | 0.33   | ±5%                   | Φ190*2.5   |
| PG-E-M18     | 1.8     | 5      | 6      | 0.396  | ±5%                   | Φ145*3     |
| PG-E-M2      | 2       | 18     | 21.6   | 0.13   | ±5%                   | 136*110*3  |



| Model No.    | Pmax(W) | Vmp(V) | Voc(V) | Isc(A) | Performance Tolerance | Size(mm)       |
|--------------|---------|--------|--------|--------|-----------------------|----------------|
| PG-PCB-M0.09 | 0.09    | 4.5    | 5.4    | 0.022  | ±5%                   | 50*30*2.8      |
| PG-PCB-M0.2  | 0.2     | 2      | 2.4    | 0.11   | ±5%                   | 50*50*2.8      |
| PG-PCB-M0.42 | 0.42    | 7      | 8.4    | 0.066  | ±5%                   | 80*50*1.6      |
| PG-PCB-M0.8  | 0.8     | 2      | 2.4    | 0.44   | ±5%                   | 120*62*3       |
| PG-PCB-M1.5  | 1.5     | 9      | 10.8   | 0.183  | ±5%                   | 133.2*75.2*2.8 |
| PG-PCB-M2    | 2       | 16     | 19.2   | 0.1375 | ±5%                   | 165*96*2.5     |
| PG-PCB-M2.8  | 2.8     | 18     | 21.6   | 0.17   | ±5%                   | 350*60*2.8     |
| PG-PCB-P3    | 3       | 7      | 8.4    | 0.275  | ±5%                   | 110*110*3      |
| PG-PCB-M4    | 4       | 6      | 7.2    | 0.733  | ±5%                   | 210*135*2.8    |
| PG-PCB-M5    | 5       | 6      | 7.2    | 0.916  | ±5%                   | 270*175*3      |
| PG-PCB-M5.5  | 5.5     | 15     | 18     | 0.403  | ±5%                   | 317.7*127*2.8  |
| PG-PCB-M6    | 6       | 13     | 15.6   | 0.507  | ±5%                   | 500*86*3       |
| PG-PCB-M6.5  | 6.5     | 18     | 21.6   | 0.397  | ±5%                   | 280*180*3      |
| PG-PCB-P6.5  | 6.5     | 18     | 21.6   | 0.397  | ±5%                   | 305*152*3      |
| PG-PCB-M10   | 10      | 18     | 21.6   | 0.61   | ±5%                   | 260*230*2.5    |
| PG-PCB-P10   | 10      | 18     | 21.6   | 0.61   | ±5%                   | 340*220*3      |





Solarparts@\_Battery & Accessories

Battery



| Model No. | Product Name       | Dimension (MM) | Nominal Capacity    |         | Design Life |
|-----------|--------------------|----------------|---------------------|---------|-------------|
| 6-GFM-100 | Lead- Acid Battery | 331*172*215    | 20HR (5.4A, 1.80V)  | 108Ah   | 12 years    |
|           |                    |                | 10HR(10A, 1.80V)    | 100Ah   |             |
|           |                    |                | 3HR(27A, 1.80V)     | 81Ah    |             |
|           |                    |                | 1HR(55A,1.80V)      | 55Ah    |             |
| 6-GFM-120 | Lead- Acid Battery | 408*175*210    | 20HR (6.48A, 1.80V) | 129.6Ah |             |
|           |                    |                | 10HR(12A, 1.80V)    | 120Ah   |             |
|           |                    |                | 3HR(32.4A, 1.80V)   | 97.2Ah  |             |
|           |                    |                | 1HR(66A,1.80V)      | 66Ah    |             |
| 6-GFM-200 | Lead- Acid Battery | 521*239*220    | 20HR (10.8A, 1.80V) | 216Ah   |             |
|           |                    |                | 10HR(200A, 1.80V)   | 200Ah   |             |
|           |                    |                | 3HR(54A, 1.80V)     | 162Ah   |             |
|           |                    |                | 1HR(110A,1.80V)     | 110Ah   |             |

Solar Charge Controller



| Model No. | Specification                            | Dimension (MM) | Weight (kg) |
|-----------|--|----------------|-------------|
| JX-100    | MPPT Controller 96V 100A                 | 315*250*108    | 5.2         |
| JX-60     | MPPT Controller 12V/24V/36V/48V Auto 60A | 285*205*93     | 3.6         |
| JX-20     | MPPT Controller 12V/24V 20A              | 150*105.6*61.5 | 0.65        |
| PWM-10    | PWM Controller 12/24V 10A                | 145*80*40      | 0.2         |

Jixiao\_Off\_Grid Inverter



| Model No. | Product Name       | Output voltage(V) | Battery type        | Continuous output power(W) | System Nominal Voltage(VDC) |
|-----------|--------------------|-------------------|---------------------|----------------------------|-----------------------------|
| JX-220    | Sine Wave Inverter | 220V/230V         | Lead- Acid/ Lithium | 500W-5000W                 | 12,24,48                    |
| JX-230    | Sine Wave Inverter | 220V/230V         | Lead- Acid          | 350W-5000W                 | 12,24,48                    |

Chaodun@Hybrid Inverter



| Model No. | Specification   | Open circuit voltage(V) | Output power(W) | Battery type        |
|-----------|-----------------|-------------------------|-----------------|---------------------|
| 22230     | Hybrid Inverter | 220V/230V               | 3000W-5000W     | Lead- Acid/ Lithium |
| 11220     | Hybrid Inverter | 110V/120V               | 2000W-3000W     | Lead- Acid/ Lithium |
| 12320     | Hybrid Inverter | 220V/230V               | 1200W-3200W     | Lead- Acid/ Lithium |

Chaodun@Micro Inverter



| Model     | Maximum input DC | Rated output | Rated output | Size          | Weight |
|-----------|------------------|--------------|--------------|---------------|--------|
| 306000086 | 60V              | 600W         | 2.8/2.7 A    | 34×24×11.5 mm | 4 kg   |
| 306000085 | 60V              | 800W         | 3.7/3.5 A    | 34×24×11.5 mm | 4 kg   |
| 306000087 | 60V              | 1000W        | 4.6/4.4 A    | 34×24×11.5 mm | 4 kg   |

Solar Cables and Connector

