



Flexible Solar Panel

- Solarparts@Flexible Series
- Solarparts@ Sandwich Flexible Series
- Xinpuguang@_Flexible Series

Features



【Lightweight And Easy To Install】

Flexible solar panels are lightweight and easy to transport, hang and dismantle. Pre-drilled metal holes and photovoltaic solar connectors help make installation quick and easy.



【High Conversion Efficiency】

Using A-grade monocrystalline silicon solar cells and Industry-leading Tech, reach higher photoelectric conversion efficiency. The surface of the best flexible solar panels is made of honeycomb ETFE, the unevenness creates refraction and collects sunlight from different angles.



【Water and Dust Resistant】

This flexible solar panels blocks splashes of water and dust from the outside world, making it ideal for outdoor use. It is more durable than traditional glass and aluminum-type solar panels.



【Extremely Flexible】

It can meet a wide range of applications where standard solar panels are not easy to install, including trailers, boats, tents, cars, trucks, yachts, RVs, campers, oceans, residential rooftops, or any other irregular surfaces.



【Superior Quality】

The components contain bypass diodes with input overcurrent protection and reverse protection design. The solar backsheets have good heat dissipation, are waterproof, heat resistant, and are easy to clean. It is resistant to extreme weather such as heat, freezing, sandstorms, and heavy rain.

Long lasting and stable quality



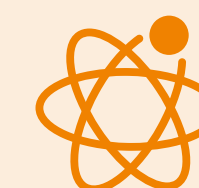
Through various long-term reliability tests.



ISO 9001, ISO 14001 and BSCI, CE, ROHS, REACH.



The reliability of components is effectively ensured under EL test before and after lamination.



Fully automatic production line and the leading photovoltaic technology.

Solarparts@_Flexible Series Solar Panels

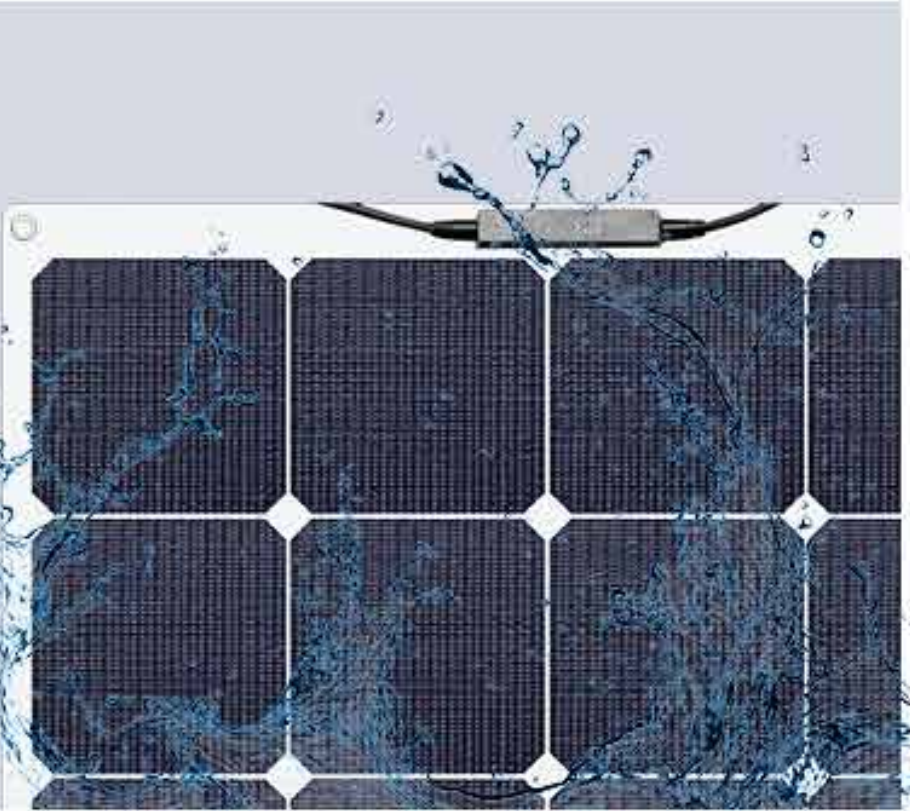


Solarparts@_Flexible Series Solar Panels

Cell type	Pmax(W)	SKU	Vmp(V)	Imp(A)	Voc(V)	Isc(A)	Performance Tolerance	Size(mm)	Weight(kg)	Packing(mm)	Efficiency	40 'HQ Container
Sunpower	50W	201020066	17.6	2.84	21.12	3.124	±5%	555*535*3	1.15	575*545*30	22%	5544pcs
Sunpower	100W	201020001	17.6	5.68	21.12	6.248	±5%	1050*540*3	2.31	1070*550*30	22%	2772pcs
Sunpower	150W	201020259	29.7	5.05	35.64	5.555	±5%	1185*795*3	3.46	1205*805*30	22%	1386pcs
Sunpower	180W	201020265	33	5.45	39.6	5.99	±5%	1315*795*3	4.15	1335*805*30	22%	1232pcs



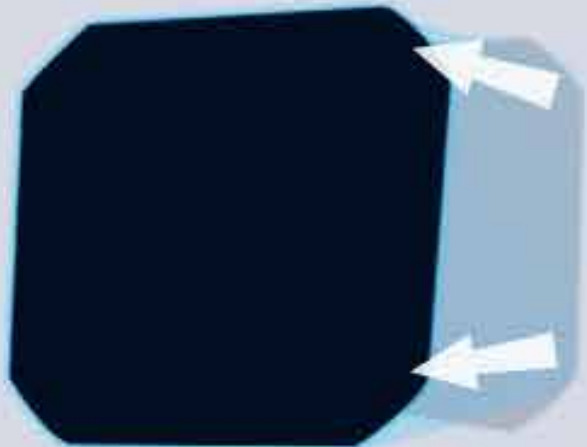
IP68
Waterproof



**Flexible for
Curved Surfaces**
70% Lighter



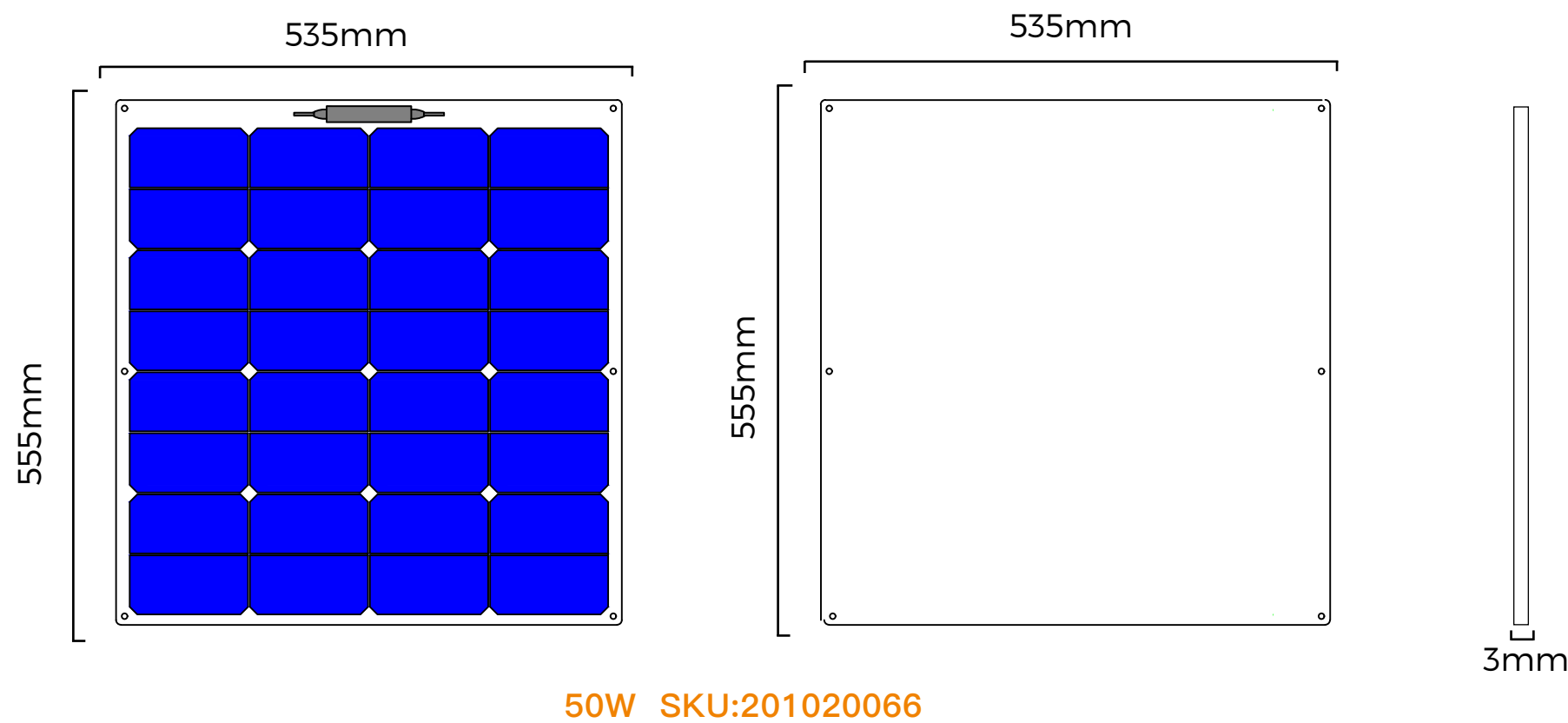
23% High
Conversion Rate



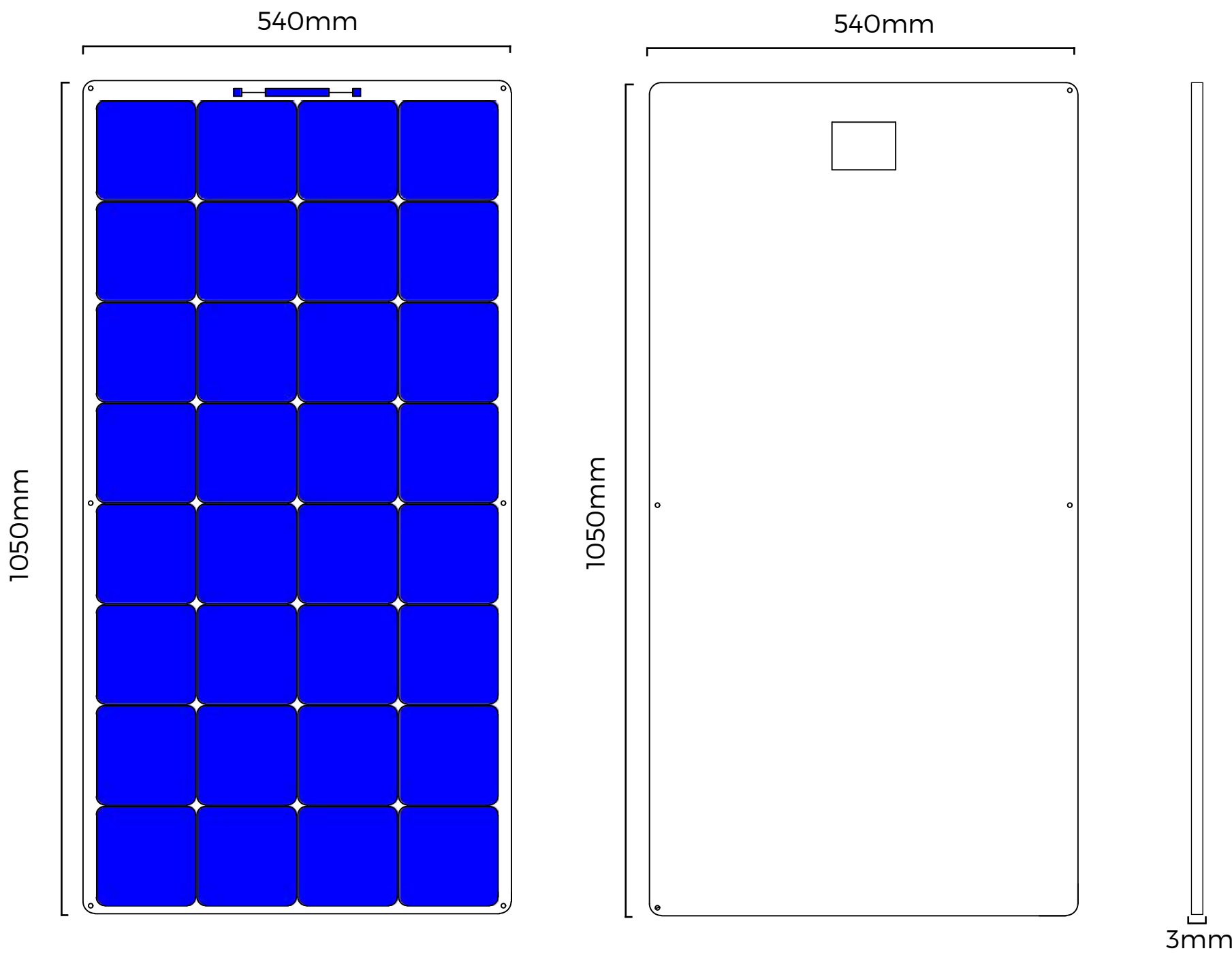
Built to Last
Coated with
Advanced Glass Fiber



MECHANICAL DIAGRAMS

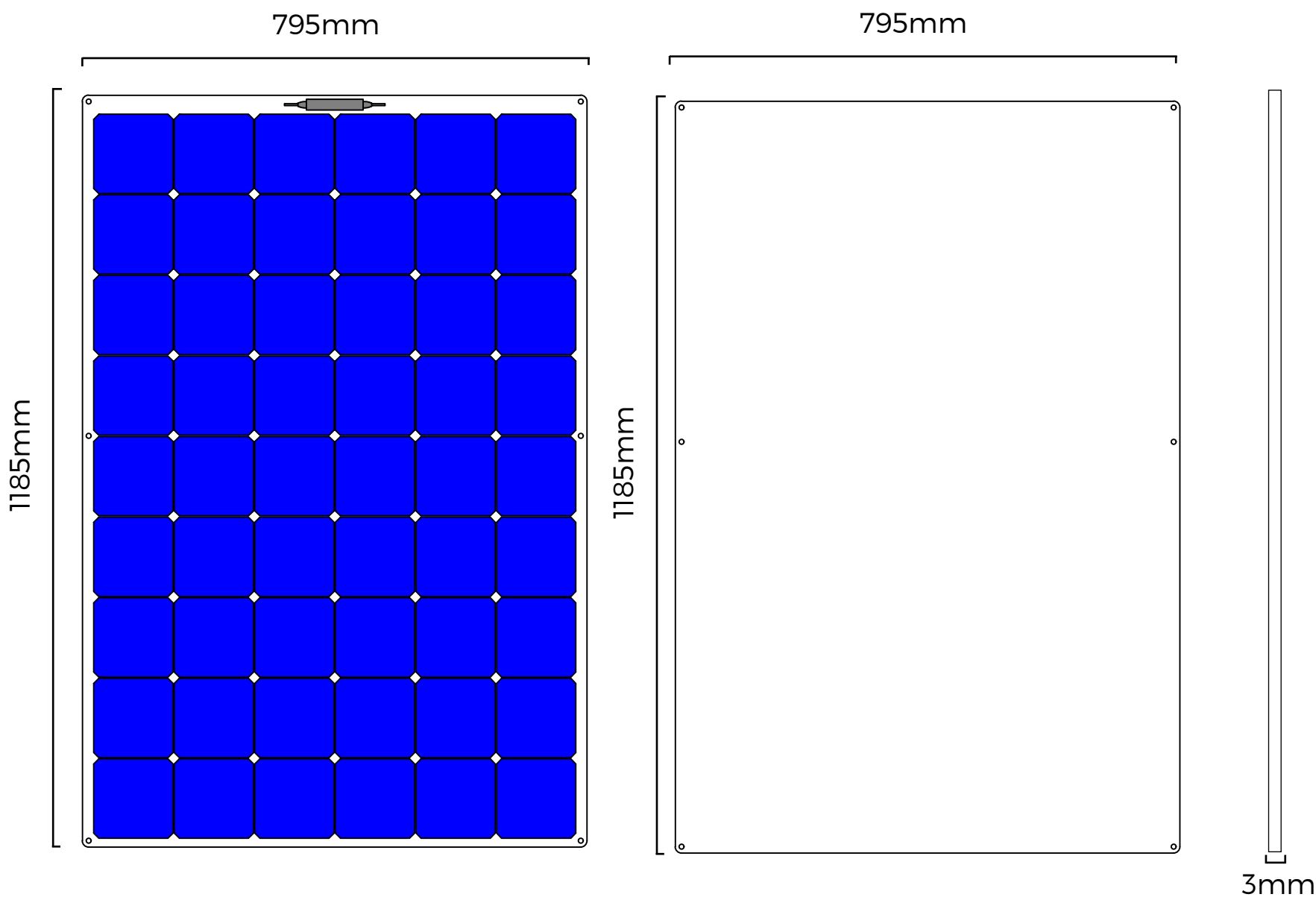


50W SKU:201020066

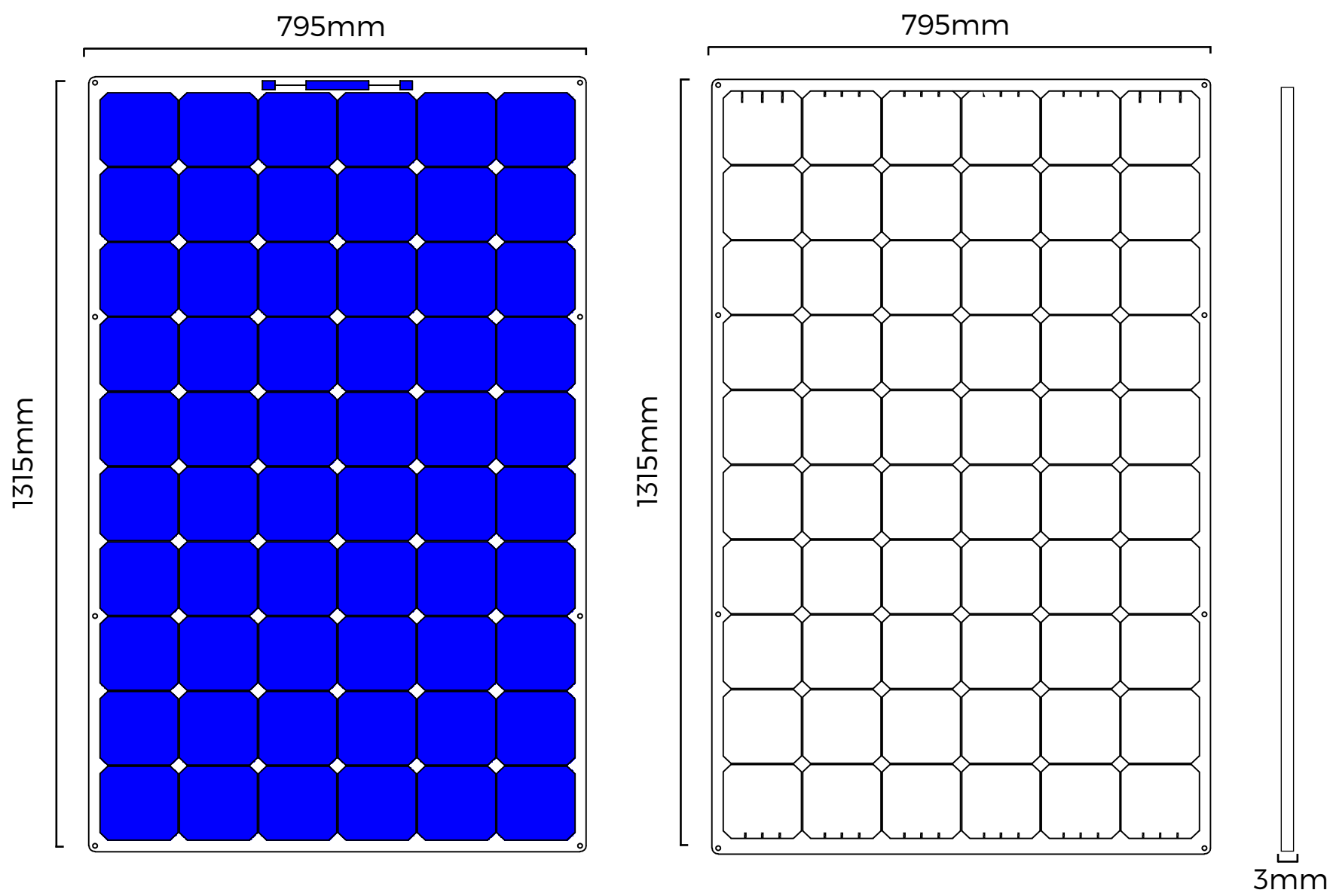


100W SKU:201020001

MECHANICAL DIAGRAMS



150W SKU:201020259



180W SKU:201020265

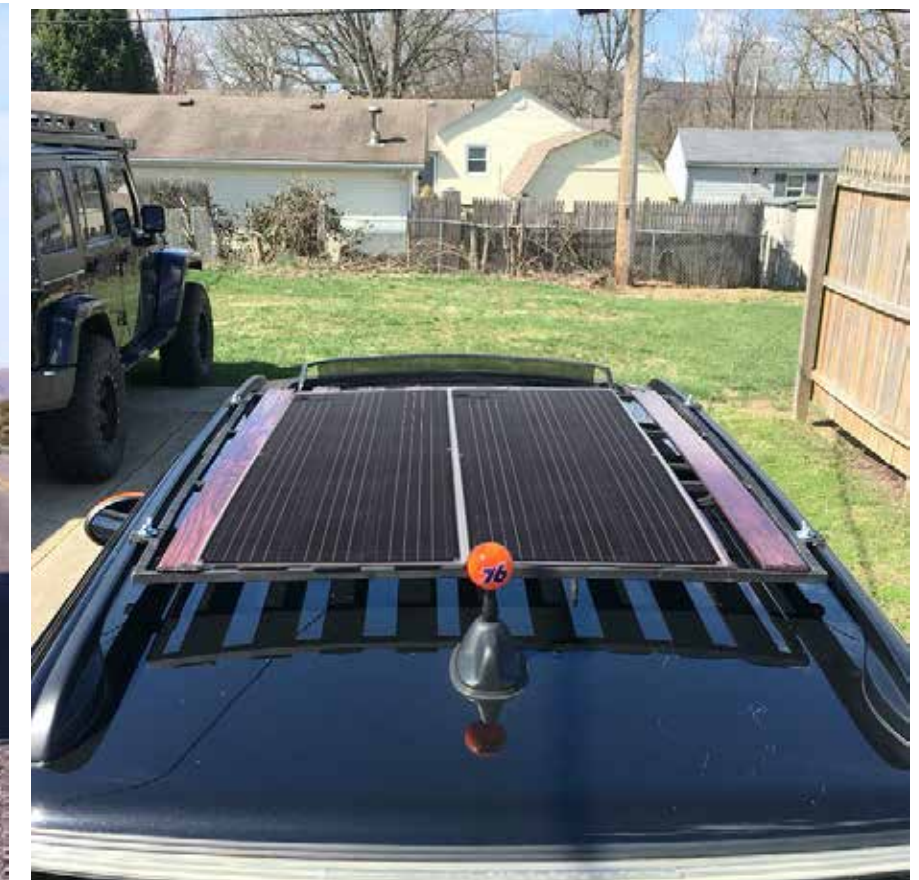
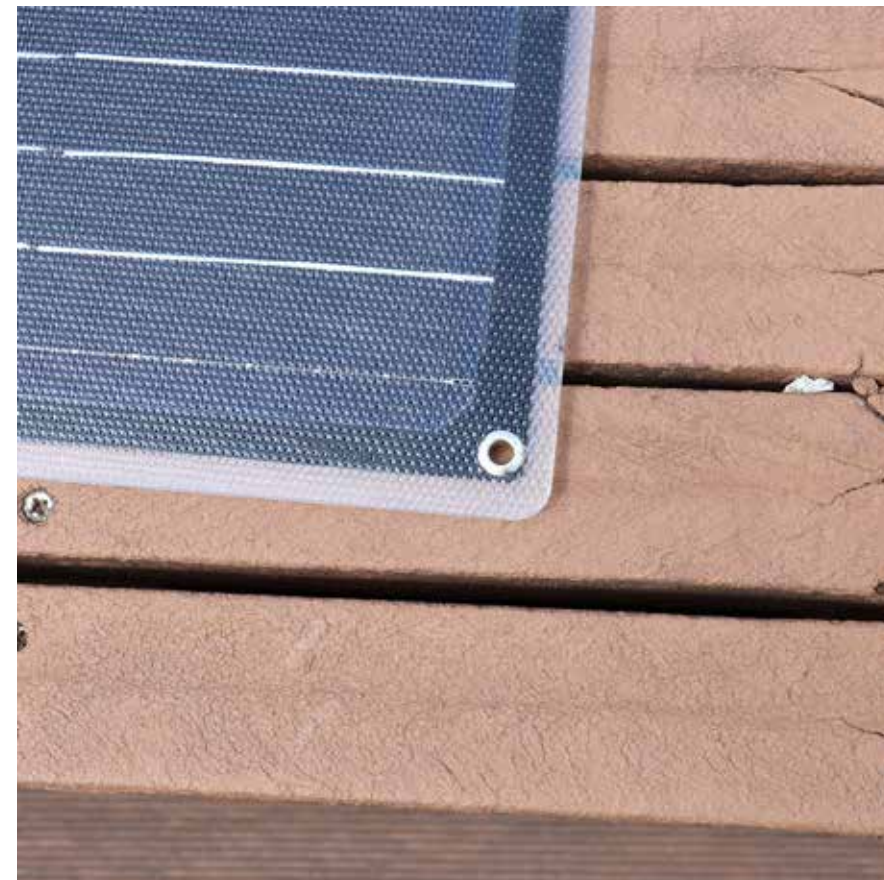
It's a part of the specifications and models of the solar panels.
We can design and provide products according to the customer's demand.

Solarparts@_Sandwich_Flexible Series Solar Panels



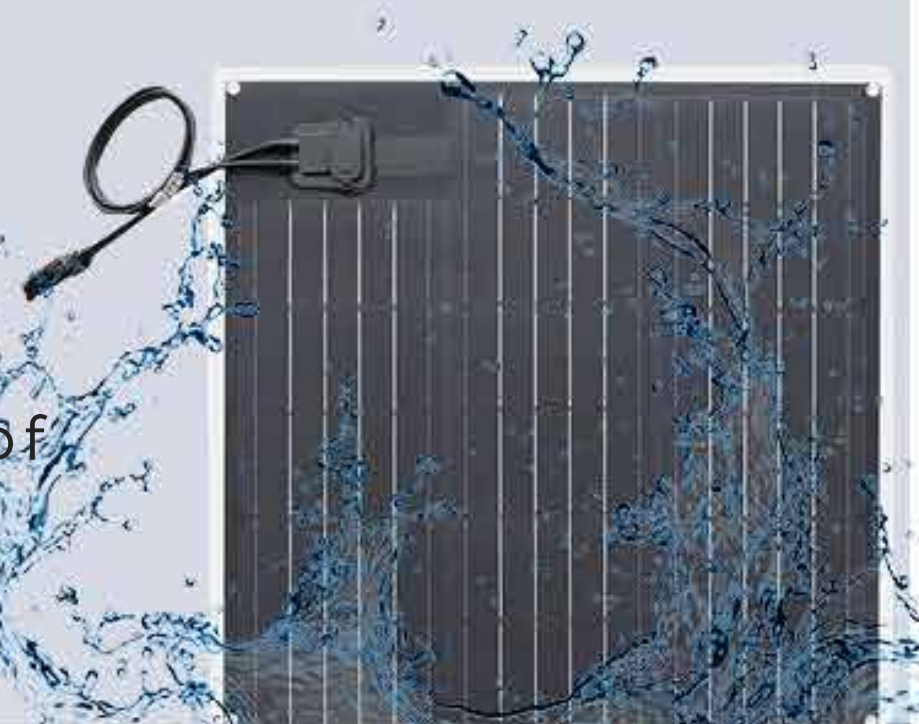
Specification--Solarparts@_Sandwich_Flexible Series

Cell type	Pmax(W)	SKU	Vmp(V)	Imp(A)	Voc(V)	Isc(A)	Performance Tolerance	Size(mm)	Weight(kg)	Packing(mm)	Efficiency	40 'HQ Container
166 Mono	50W	203010140	18.7	2.67	22.44	2.91	±5%	830*370*4	1.585	845*380*22	20%	6700pcs
166 Mono	100W	203010141	19.25	5.19	23.1	5.709	±5%	1065*545*4	2.995	1080*555*22	20%	3600pcs
166 Mono	150W	203010142	19.25	7.79	23.1	8.569	±5%	1175*710*4	4.305	1190*720*22	20%	2500pcs



IP68

Waterproof



**Flexible for
Curved Surfaces**

70% Lighter



23% High
Conversion Rate

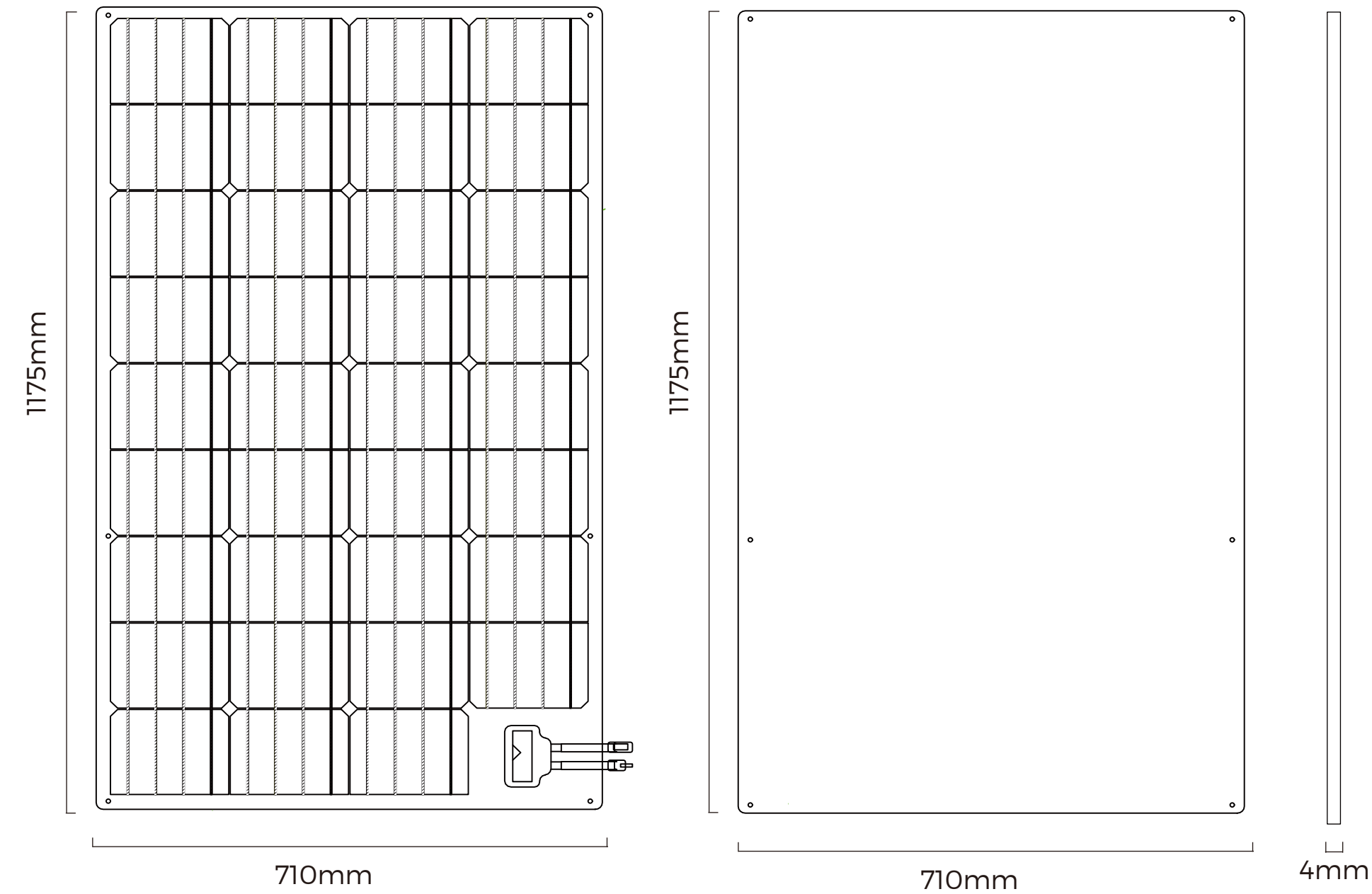


Built to Last

Coated with
Advanced Glass Fiber



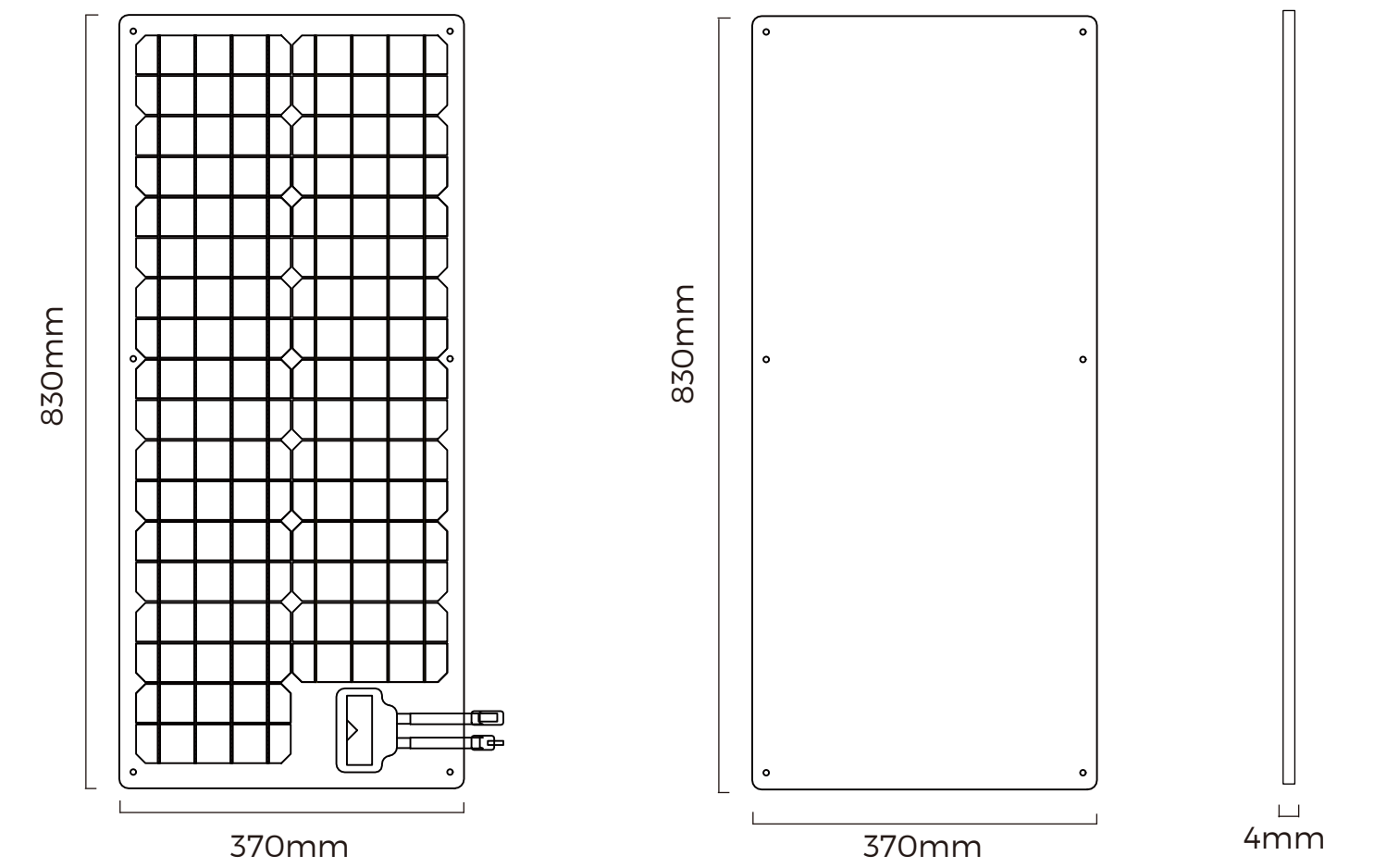
MECHANICAL DIAGRAMS



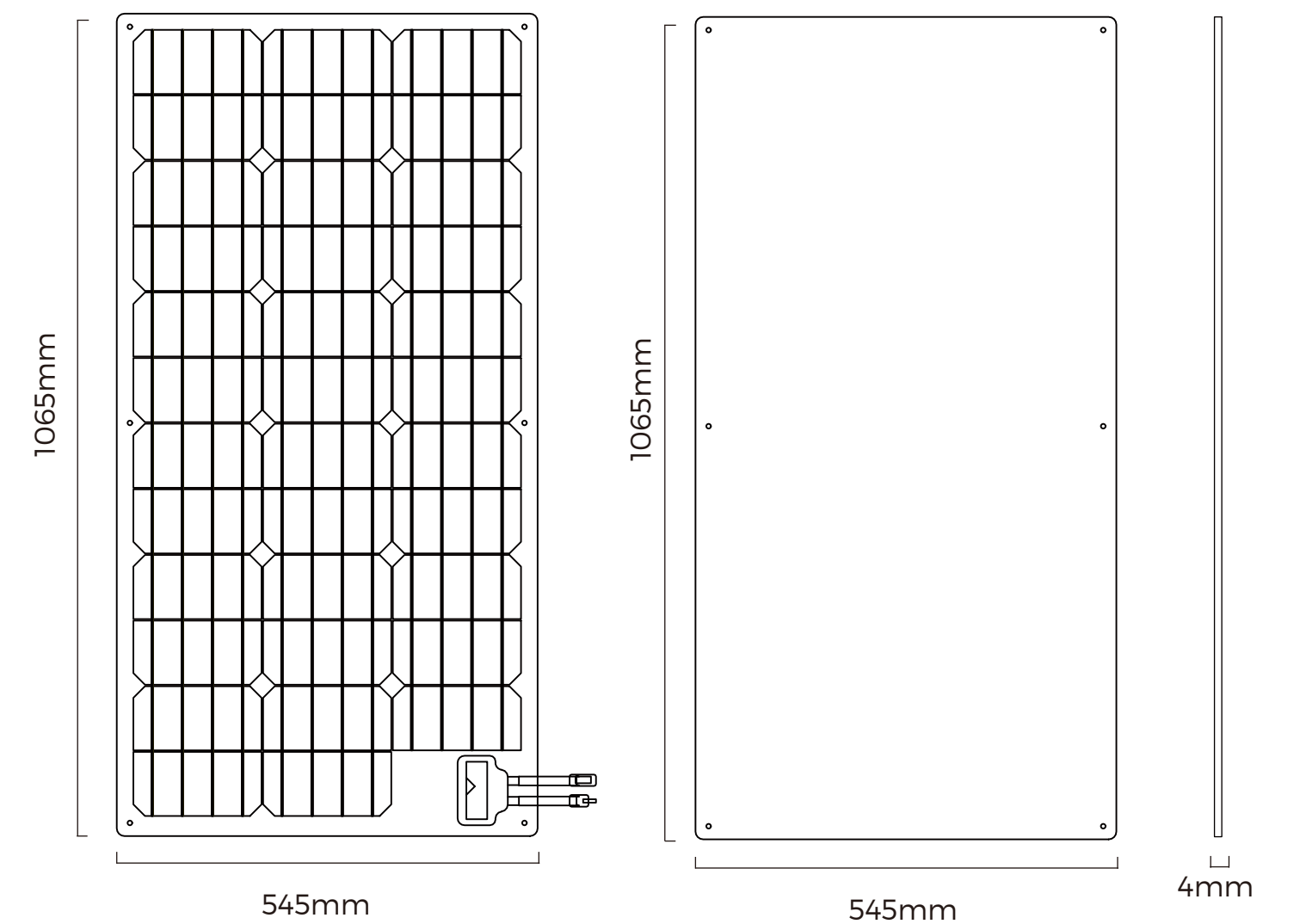
150W SKU:203010142

*It's a part of the specifications and models of the solar panels.
We can design and provide products according to the customer's demand.

MECHANICAL DIAGRAMS



50W SKU:203010140



100W SKU:203010141

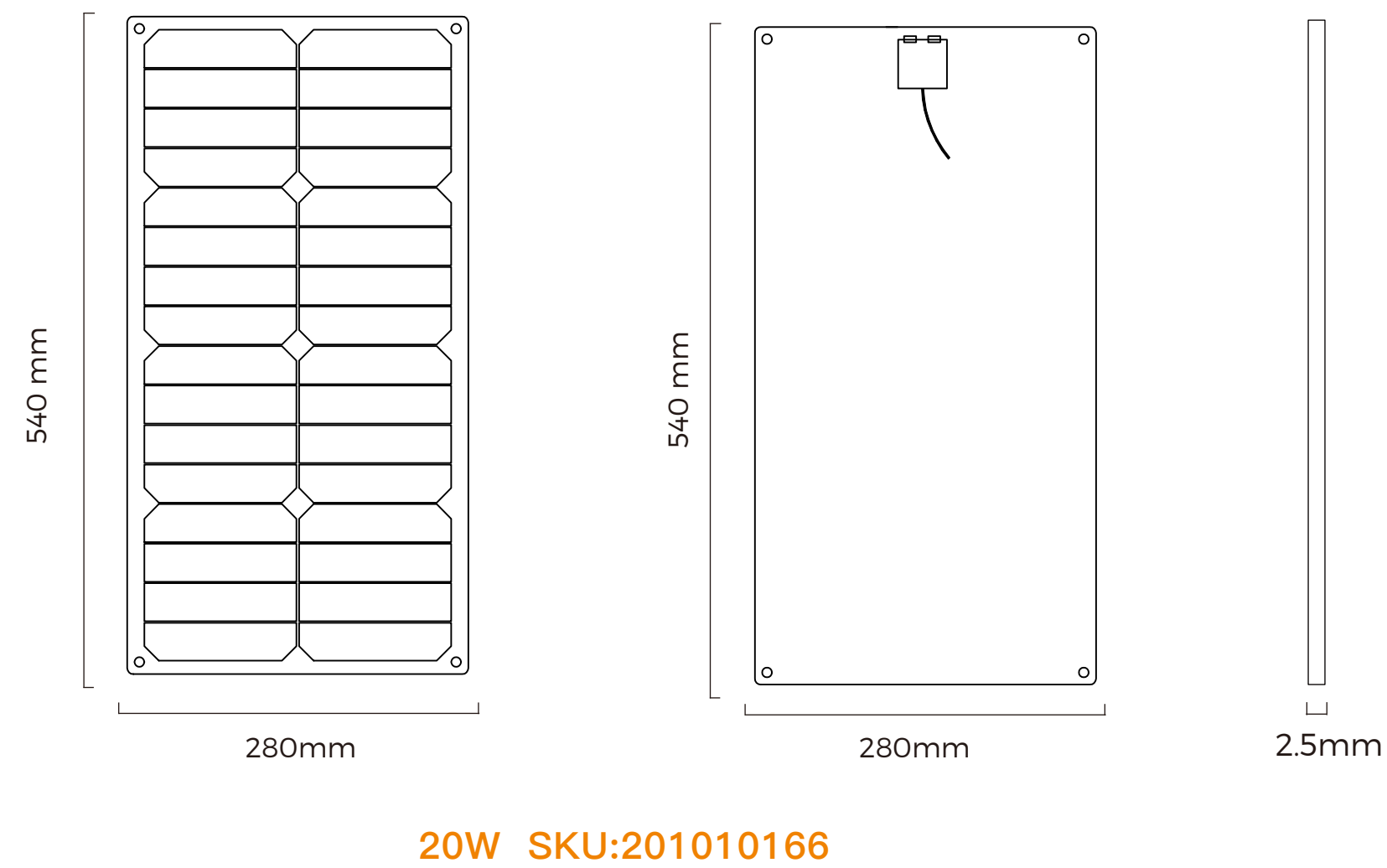
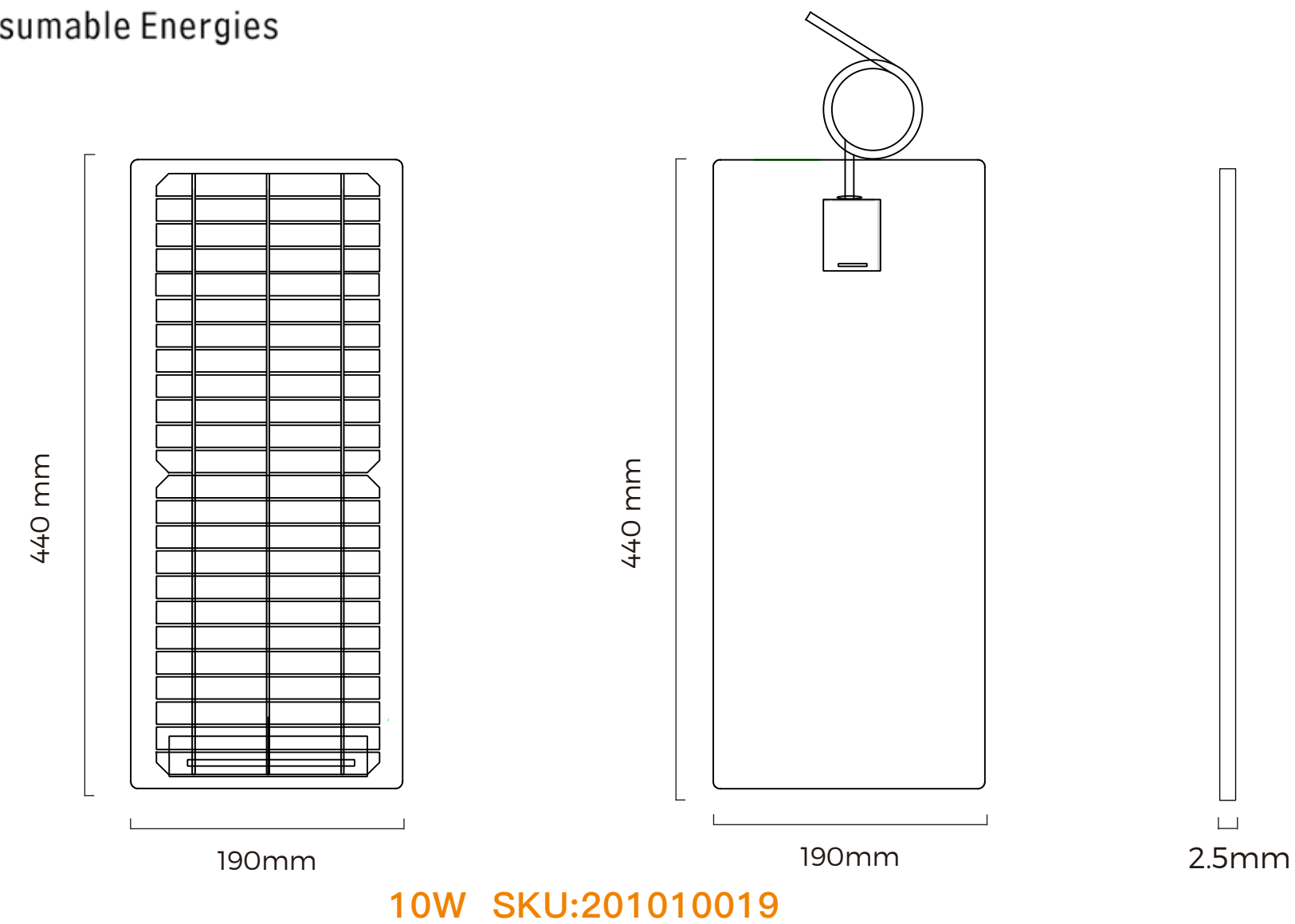
Xinpuguang@_Flexible Series Solar Panels



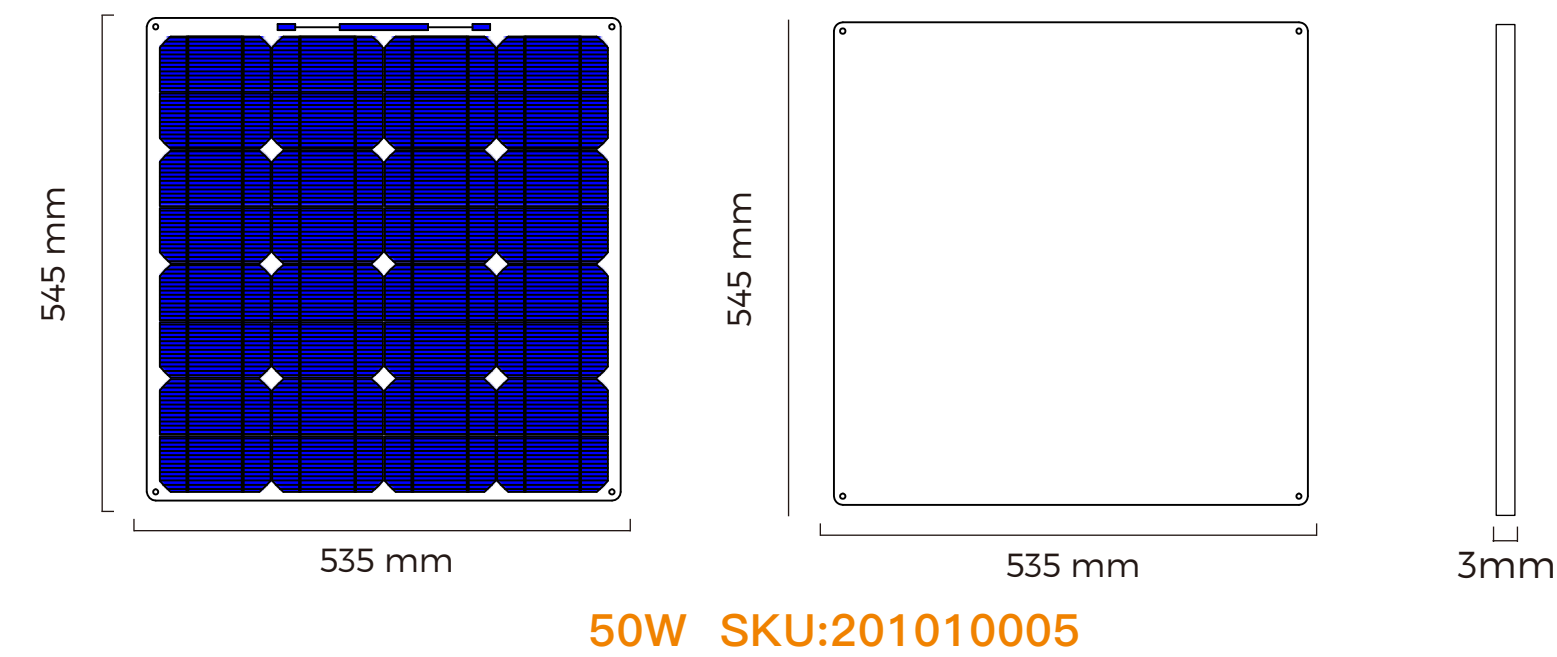
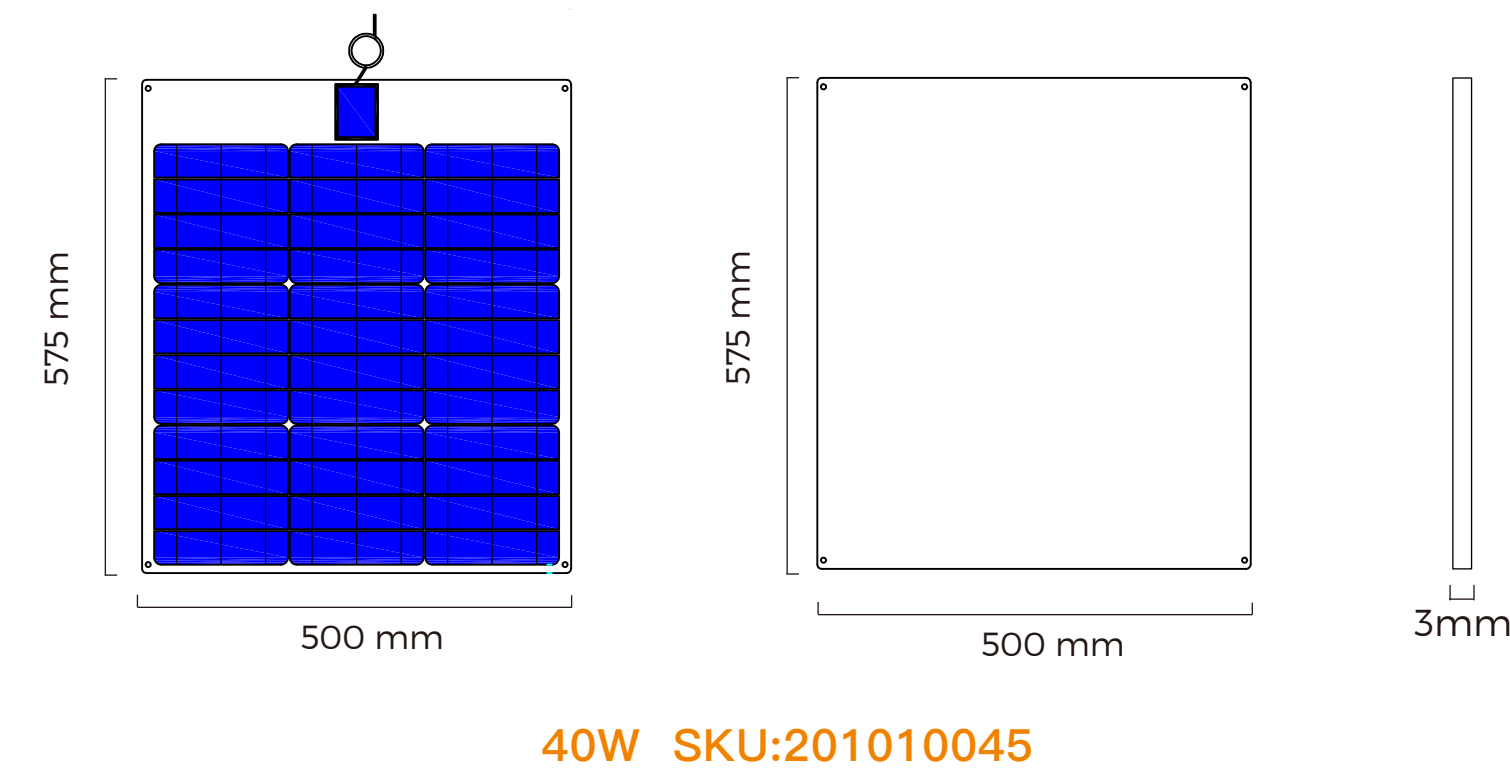
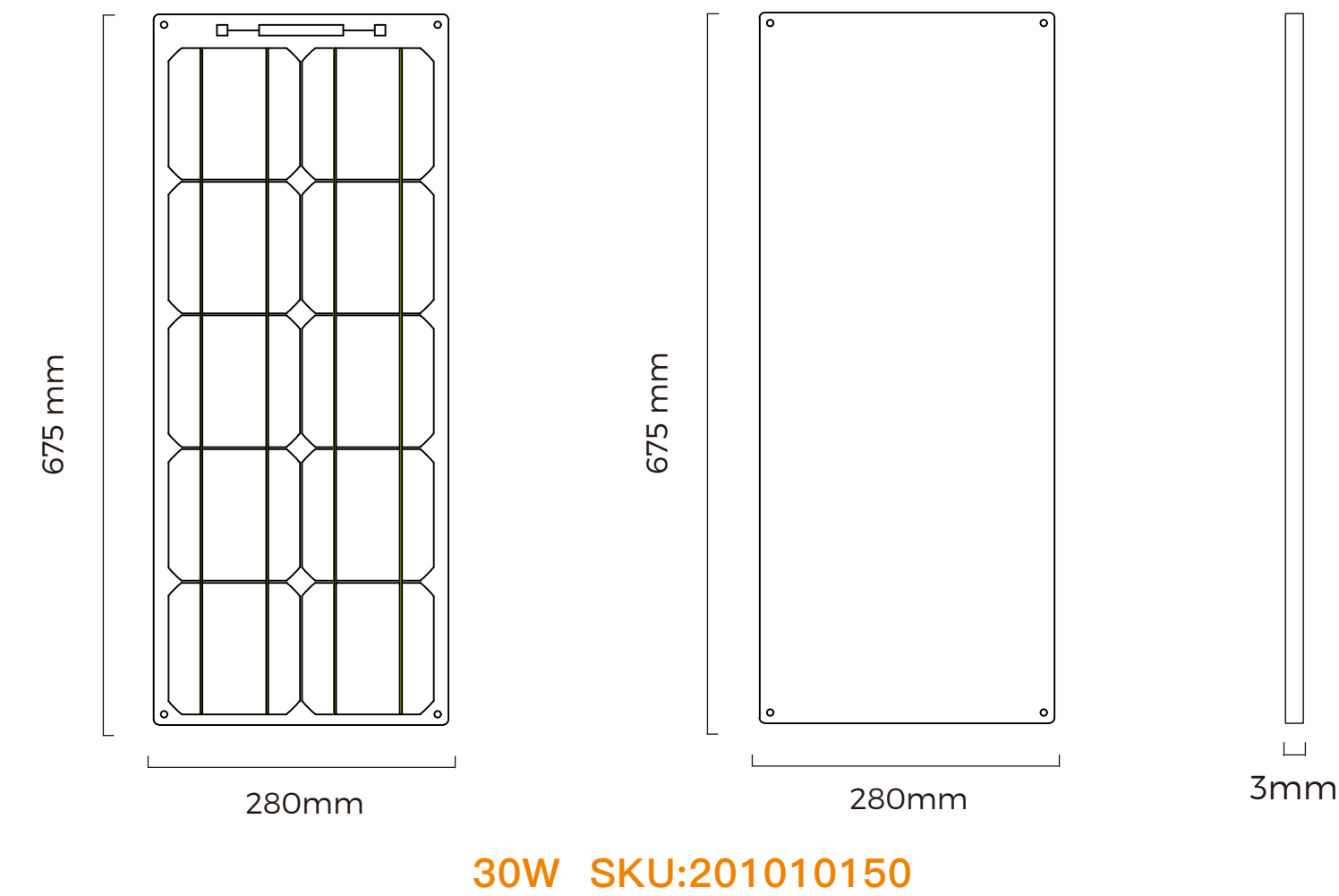
Specification--Xinpuguang@_Flexible Series

Cell type	Pmax(W)	SKU	Vmp(V)	Imp(A)	Voc(V)	Isc(A)	Performance Tolerance	Size(mm)	Weight(kg)	Packing(mm)	Efficiency	40 'HQ Container
156 Mono	10W	201010019	18	0.56	21.6	0.61	±5%	440*190*2.5	0.32	450*200*231	20%	19000pcs
125 Mono	20W	201010166	16	1.25	19.2	1.38	±5%	540*280*2.5	0.64	560*290*23	20%	11400pcs
125 Mono	30W	201010150	5	6	6	5.5	±5%	675*280*3	0.96	695*290*23	20%	9120pcs
156 Mono	40W	201010045	18	2.2	21.6	2.44	±5%	575*500*3	1.28	595*510*23	20%	6840pcs
125 Mono	50W	201010005	16	3.12	19.2	3.43	±5%	545*535*3	1.6	565*545*23	20%	6840pcs



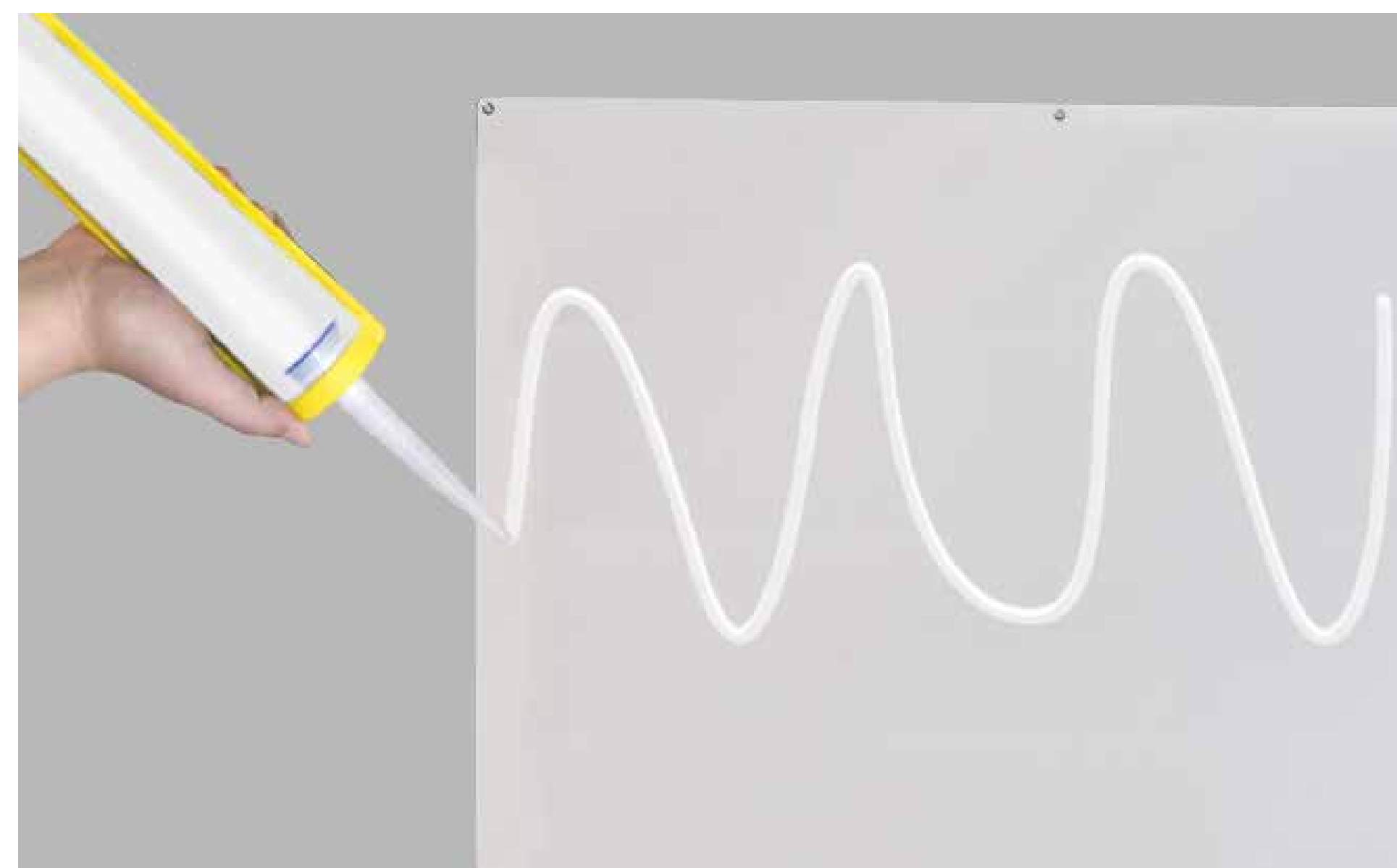


*It's a part of the specifications and models of the solar panels.
We can design and provide products according to the customer's demand.



EASY INSTALLATION

Hung with hooks or attached to a surface using an adhesive.



Attention

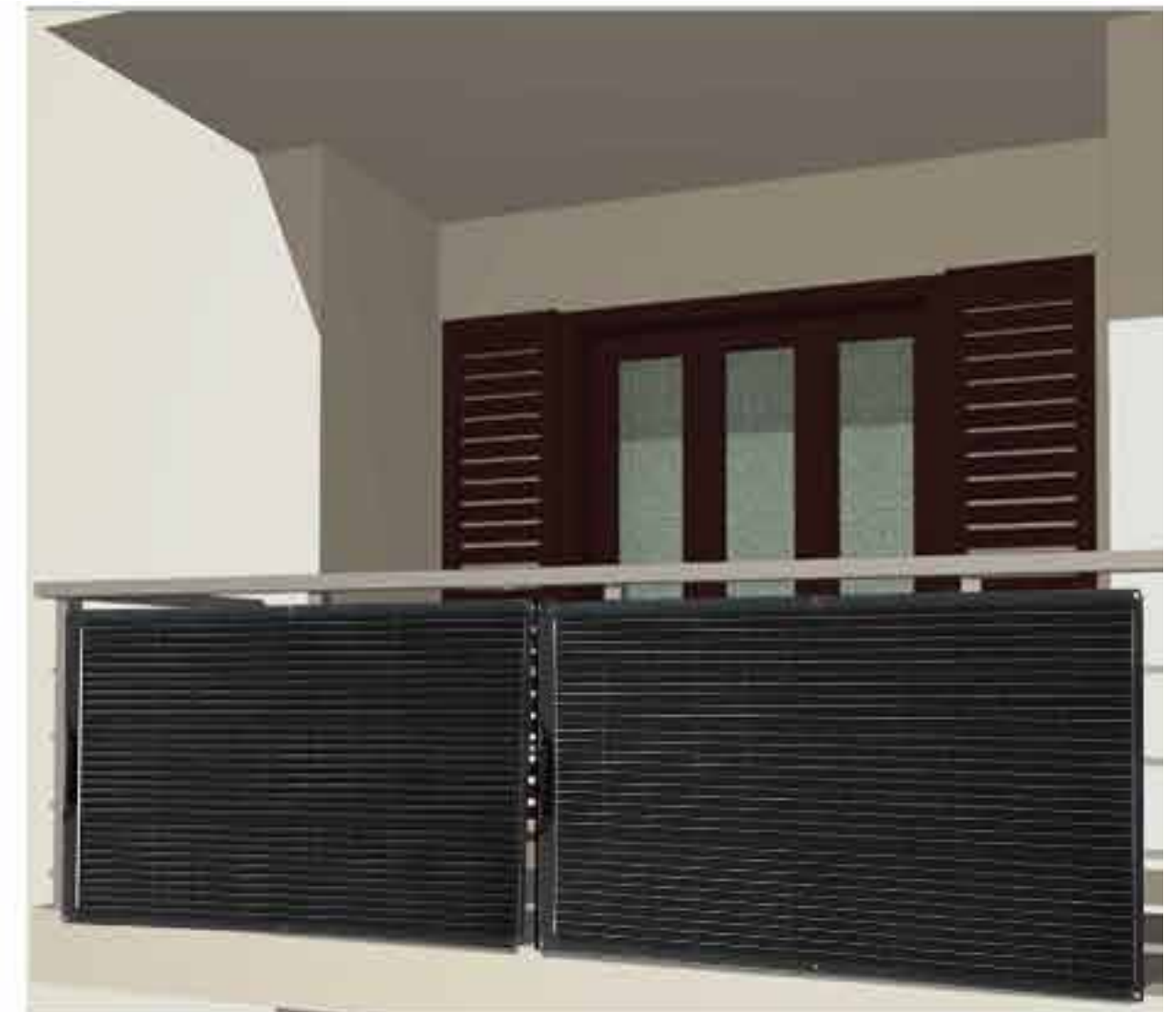
1. Not contact with strongly corrosive substances. Neutral silicone adhesives are not corrosive to products.
2. Avoid scratching and striking the surface of the solar panel by hard objects.

Use and storage

1. Storage conditions: Normal temperature, dry and ventilated place.
2. Use in outdoor environment without shielding under the sun.

Wide Application

Can be used on marine, rooftop, RV, boats and any curvy surfaces.



**“Mission:
Absorbing Sunshine
Focusing Energy**

Returning the earth to a clean place ”

SOLARParts®
For Consumable Energies

Company: Shenzhen Solarparts Co.,Ltd.

Address: 401, Bldg B, 3th Road, Xinglian industrial
Park, Hehua community, Pinghu Street,
Longgang District, Shenzhen City 518111
China

Email address: info@isolarparts.com
Homepage: www.isolarparts.com