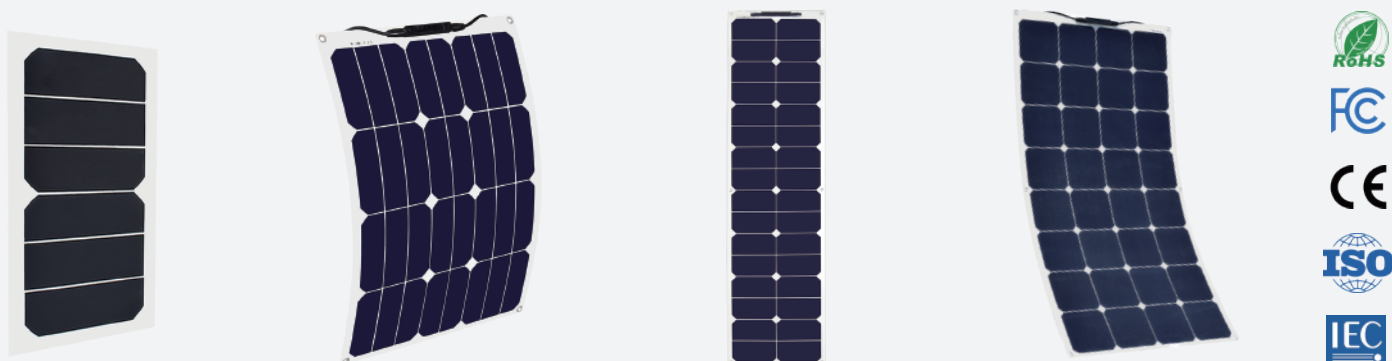


Solarparts@_Flexible Series Solar Panel

Solarparts@_Flexible 系列太阳能板



Why Choose Solarparts@_Flexible Series Solar Panel?

Made with SP highest-efficiency solar cells, Solarparts@_Flexible Series Solar Panel delivers the most power and highest charging efficiency in their product class. Solar panels are certified by FCC, RoHS, CE, ISO, IEC to ensure safety, reliability, high quality, energy-saving, and environmental protection. SP cells are different from conventional cells. Traditional cells are prone to cracking when bent or impacted, resulting in power loss, but flexible panels made with SP cells can resist power loss due to bending and squeezing. Solarparts@_Flexible Series Solar Panels are the best choice for customers due to the combination of high power and cell ruggedness.

为什么选择Solarparts@_柔性系列太阳能电池板？

Solarparts@_柔性系列太阳能电池板采用 SP 高效率太阳能电池片制成，可提供同类产品中的最大功率和最高的充电效率。太阳能电池板通过FCC, RoHS, CE, ISO, IEC认证，以确保安全可靠，品质优良，并且节能环保。SP电池片与传统电池片不同。传统电池片在弯曲或受到冲击后容易发生隐裂，因而功率发生衰减，但是使用SP电池片制成的柔性面板能够抵抗因弯曲和挤压而导致的功率损失。Solarparts@_柔性系列太阳能电池板结合了高功率和电池耐用性，是客户的最佳选择。

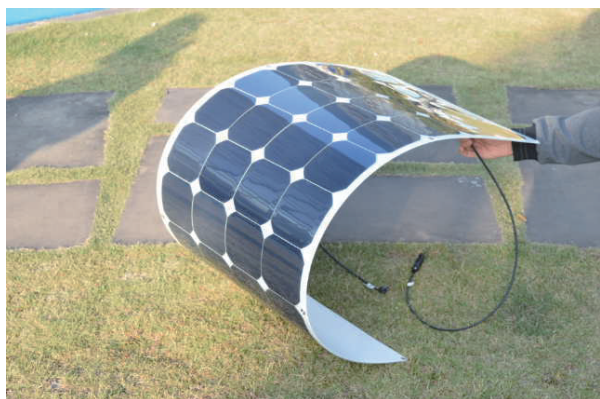
☆ Features 特征

【High charging efficiency】

Designed and made by SOLARParts with SP high-efficiency solar cells.

【高充电效率】

由 SOLARParts 采用 SP高效太阳能电池设计和制造。



【Lightweight, Portable & Easy to Stow】

Constructed with top-grade, light-weight polymer materials, allowing for easy transport, installation, and panel flexing up to 30 degrees.

【轻巧、便携且易于存放】

采用顶级轻质聚合物材料制成，便于运输、安装和面板弯曲高达 30 度。

【Good weather resistance】

According to the size of the flexible solar panels, they are packaged with TPT/PET/ETFE, EVA, and other materials with excellent weather resistance. They are matched with sealed junction boxes, photovoltaic special cables, and connectors. The panels are good weather-resistant and have excellent outdoor performance and longevity.

【耐候性好】

根据柔性太阳能电池板的尺寸，采用TPT/PET/ETFE、EVA等耐候性优异的材料封装。与密封接线盒、光伏专用电缆、连接器配套使用。该面板具有良好的耐候性，具有更出色的户外性能和使用寿命。



Each panel comes with MC4 male and female connectors that can connect easily to solar compatible devices. Connection cables are device-specific. The Junction box has IP67 protection.

每个面板都带有 MC4 公母连接器，可以轻松连接到太阳能兼容设备。连接电缆是设备专用级别的。接线盒具有 IP67 防护等级。

☆ Application 应用

We manufacture each panel using a top-grade, lightweight polymer material, allowing for easy transport, installation, and flexibility up to 30 degrees. Applied to Golf cars, Yachts, Boats, RVs, Caravans, Electric vehicles, Travel tourism cars, Patrol cars, roofs, camping, roof power generation, tents, ships, etc.

我们使用顶级轻质聚合物材料制造每个面板，便于运输、安装和高达 30 度的灵活性。适用于高尔夫车、游艇、船、房车、大篷车、电动车、旅游观光车、巡逻车、屋顶、露营、屋顶发电、帐篷、船舶等。



Solarparts@_Flexible Series Solar Panel

Solarparts@_Flexible 系列太阳能板

Electrical parameter | STC 电性能参数 (6w~100w)

Rated Power 功率输出	Pmax(W)	6	25	50	100
Model No. 产品型号	/	PG-SP-FSP5	PG-SP-FSP25	PG-SP-FSP50	PG-SP-FSP100
Cell type 电池片类型	/	Sunpower	Sunpower	Sunpower	Sunpower
Operating Voltage 最大功率点的工作电压	Vmp(V)	6	17.6	17.6	17.6
Operating Current 最大功率点的工作电流	Imp(A)	1.0	1.42	2.48	5.68
Open Circuit Voltage 开路电压	Voc(V)	7.2	21.12	21.12	21.12
Short Circuit Current 短路电流	Isc(A)	1.1	1.56	3.13	6.23
Performance Tolerance 功率公差	(%)	±5%	±5%	±5%	±5%
Boundary dimension 外形尺寸	mm	300*160*3	540*300*3	555*535*3	1060*540*3

Electrical parameter | STC 电性能参数 (110w~125w)

Rated Power 功率输出	Pmax(W)	110	115	120	125
Model No. 产品型号	/	PG-SP-FSP110	PG-SP-FSP115	PG-SP-FSP120	PG-SP-FSP125
Cell type 电池片类型	/	Sunpower	Sunpower	Sunpower	Sunpower
Operating Voltage 最大功率点的工作电压	Vmp(V)	19.8	19.8	19.8	19.8
Operating Current 最大功率点的工作电流	Imp(A)	5.56	5.81	6.06	6.31
Open Circuit Voltage 开路电压	Voc(V)	23.76	23.76	23.76	23.76
Short Circuit Current 短路电流	Isc(A)	6.11	6.39	6.66	6.94
Performance Tolerance 功率公差	(%)	±5%	±5%	±5%	±5%
Boundary dimension 外形尺寸	mm	1185*540*3	1185*540*3	1185*540*3	1185*540*3

Complete quality management system and product certification

完整的质量管理体系与产品认证

ISO 9001:2015: ISO 质量管理体系

ISO 14001: 2015: ISO 环境管理体系

RoHS EBO1909058-V150 (EU)2015/ 863 限值要求

IEC 61215 2nd Edition (2005)

EMC 2004/108/EC BCTC-141212557



Electrical parameter | STC 电性能参数 (150w~180w)

Rated Power 功率输出	Pmax(W)	150	160	170	180
Model No. 产品型号	/	PG-SP-FSP150	PG-SP-FSP165	PG-SP-FSP170	PG-SP-FSP180
Cell type 电池片类型	/	Sunpower	Sunpower	Sunpower	Sunpower
Operating Voltage 最大功率点的工作电压	Vmp(V)	29.7	29.7	30.78	30.78
Operating Current 最大功率点的工作电流	Imp(A)	5.05	5.39	5.52	5.85
Open Circuit Voltage 开路电压	Voc(V)	35.64	35.64	36.94	36.94
Short Circuit Current 短路电流	Isc(A)	5.56	5.93	6.08	6.43
Performance Tolerance 功率公差	(%)	±5%	±5%	±5%	±5%
Boundary dimension 外形尺寸	mm	1185*795*3	1185*795*3	1185*795*3	1185*795*3

Structural performance 结构性能

Solar cell 太阳能电池片	125*125mm Sunpower solar cell
Surface 面板	ETFE/PET/TPT
EVA(EVA)	Through the Rhine test 通过莱茵测试
Junction Box 接线盒/稳压盒	MC4Junction Box / Voltage regulator box
Output Interface 输出接口	USB /DC/MC4

Temperature characteristics 温度特性

Standard Test Conditions 电池标称工作温度 (NOTC)	45±2°C
Short Circuit Current Temp 温度系数 (Sic)	+0.050%/°C
Open Circuit Voltage Temp 温度系数 (Vic)	-0.30%/°C
Max. Power Temp 温度系数 (Plax)	-0.39%/°C

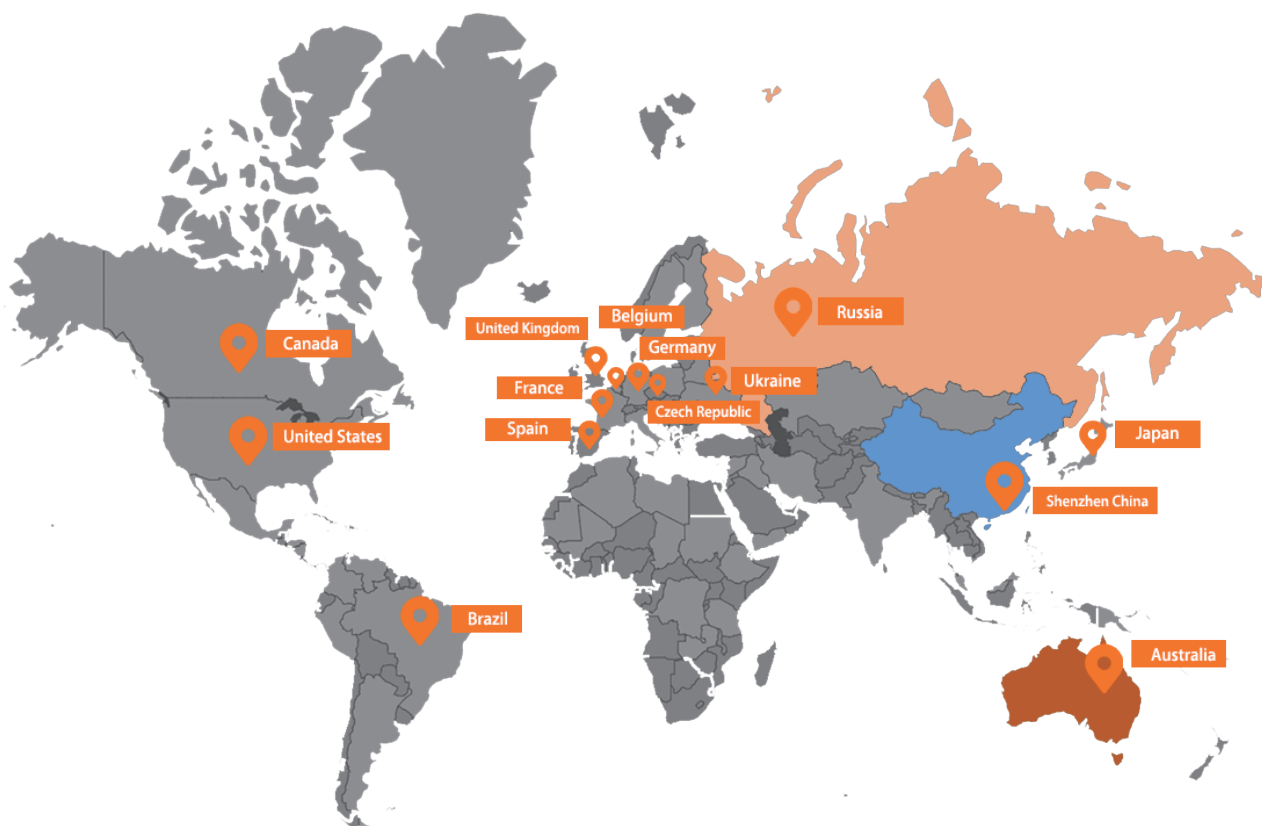
Limit parameter 极限参数

Operating Temperature 工作温度	-40~+85°C
Max.System Voltage 最大系统电压	1000V DC

*It's a part of the specifications and models of the solar panels.We can design and provide products according to the customer's demand.

*以上为我们公司的一部分太阳能板的规格及型号。我们可以根据客户要求设计及定制。

Global Markets Distribution



Contact us:

Company: Shenzhen Solarparts Inc.

Shenzhen Puguang Solar Energy Co.,Ltd.

Address: 4th Floor,Building A3,Xinglian Industrial Park, Pingxing North Road,
PinghuTown,Longgang District, Shenzhen 518112 China.

Phone: +86-755-28720791 Fax: +86-755-85233441 Mobile: +86-13923729619

Website: www.isolarparts.com Email: Philip@isolarparts.com



QR Code for Official Website
www.isolarparts.com



QR Code for On-line Shopping Sotore
www.xinpuguangsolar.com