

ECO-WORTHY

Manual

Multi-Panel Mounting System

Installation Manual

 **WARNING PLEASE READ CAREFULLY BEFORE PROCEEDING**

The user must read and follow the manufacturer's instructions for each component of the system. These instructions must be provided to the user of this equipment. The user must understand these instructions before using this equipment. Manufacturer's instructions must be followed for the proper use and maintenance of this equipment.

Always follow the basic precautions listed below, wear gloves to prevent injury. These precautions include, but are not limited to, the following:

- Make sure that the surface this bracket is being mounted on has the strength to handle the weight of both solar panels and this bracket.
 - Use bolts and nuts as well as washers for installation and tighten them firmly so that solar panels are secure and do not move.
 - Always loosen the corresponding screw before adjusting the angle or direction of solar panels. Never force this adjustment with the screw still tightened.
 - Some fittings may deteriorate over extended periods of time due to wear and/or corrosion. For optimum safety, the installation should be checked thoroughly at regular intervals.
- * Illustrations herein are for explanatory purposes only, and may not match actual appearance during operation.

* Specifications and descriptions in this owner's manual are for information purposes only. ECO-WORTHY reserves the right to change or modify products or specifications at any time without prior notice.

IMPORTANT

If you have questions on the use, care, application, or suitability of this equipment contact ECO-WORTHY.

CONTACT US

Web: www.eco-worthy.com

Tel: +1-866-939-8222

Mail: info@eco-worthy.com

FB: @ecoworthy.store

Ins: @ecoworthyenergy

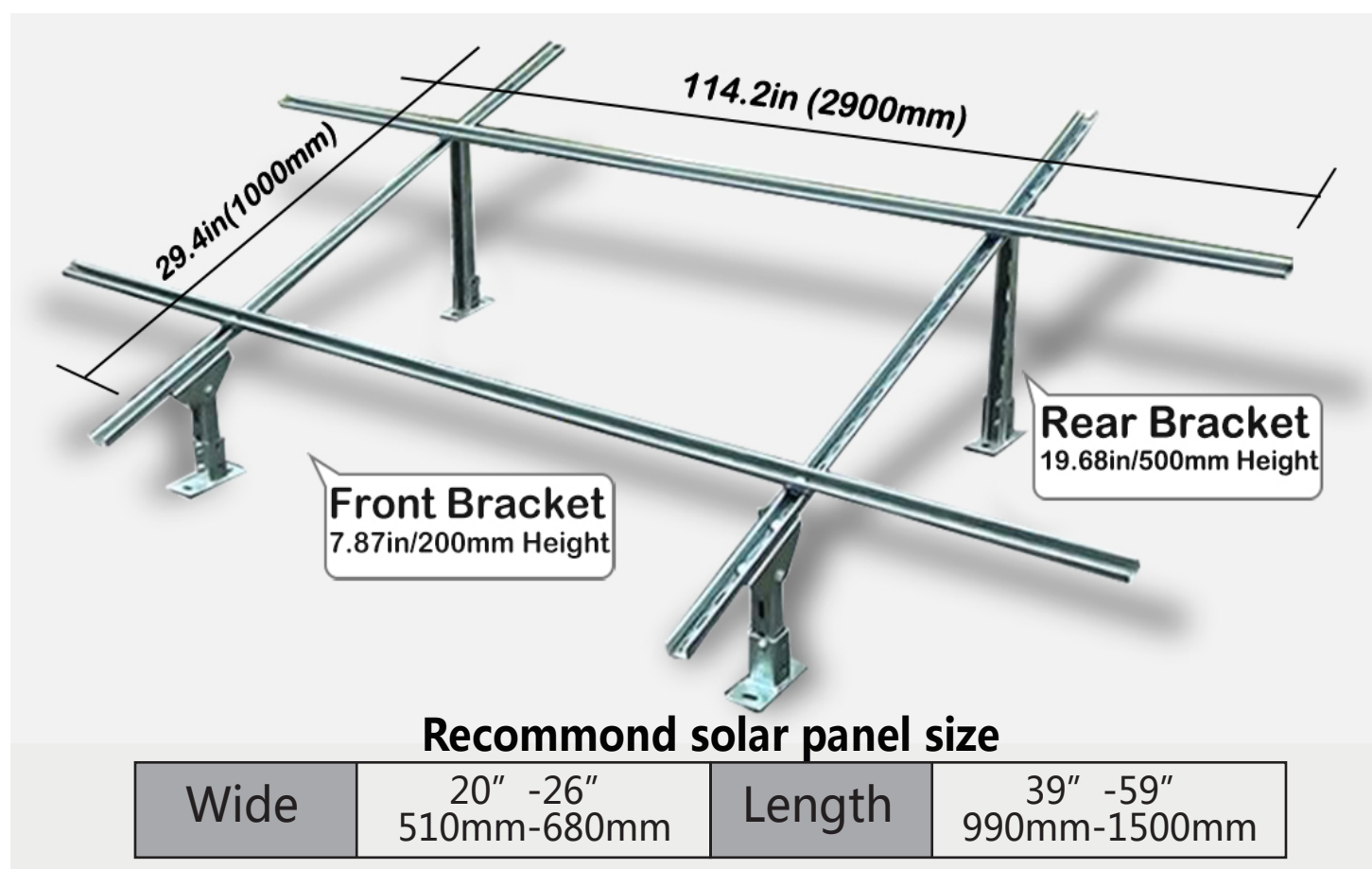
Twitter: @ecoworthy

Youtube: Eco Worthy

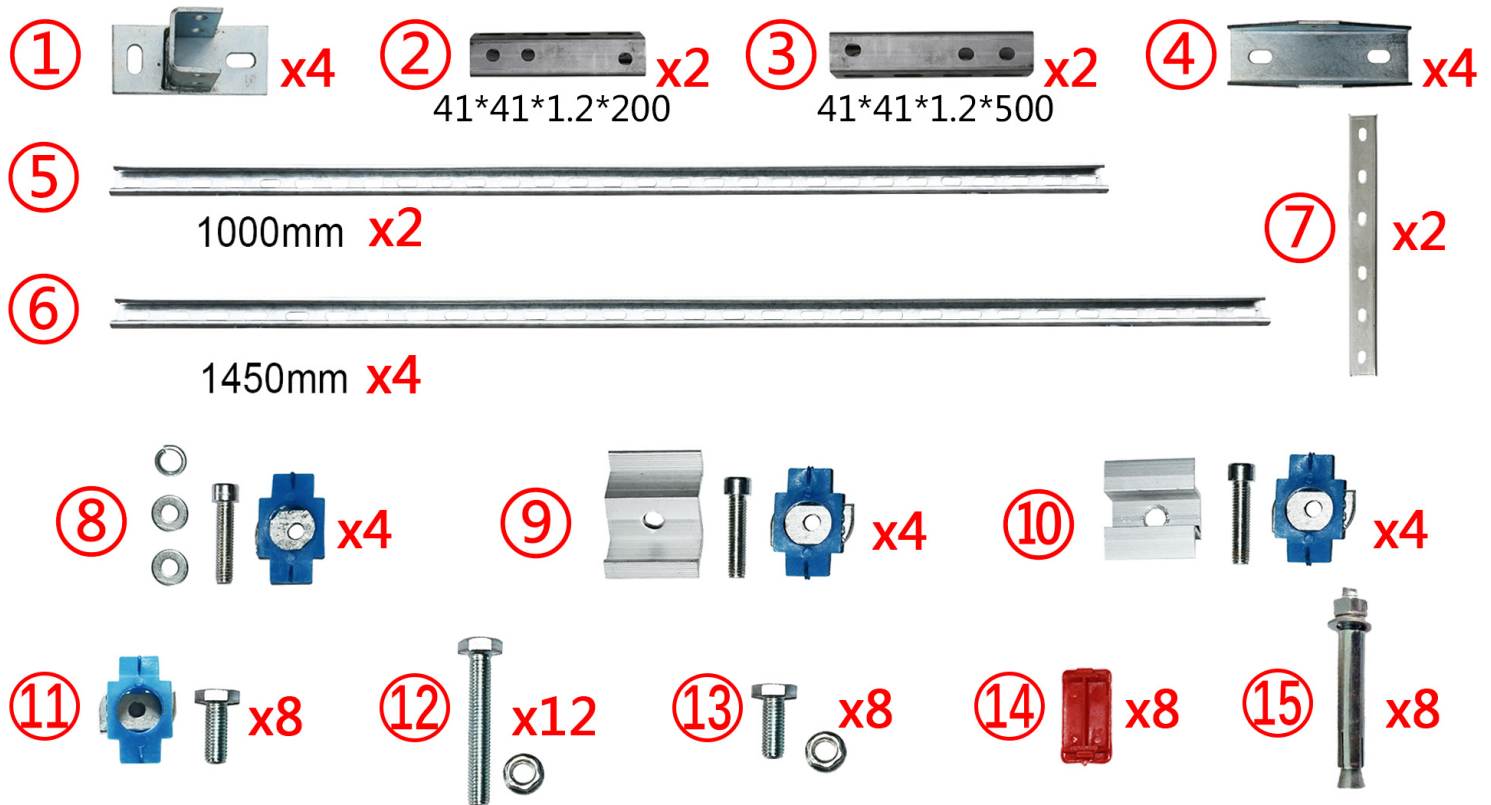
I .Angle adjustable solar panel mounting bracket system

The installation angle can be adjusted from 18 ° -30 ° , it can accommodate up to 4 pcs 100W-200W ECO-WORTHY solar panels.

Solar Panel	Size(inch)
100W	39.8"x20.1"x1.4 "
120W	39.2"x26.2"x1.4"
200W	58.3"x26.3"x1.4"



II. List of accessories



Number	Name of accessories	Size (inch)	Quantity (pc)
①	Base		4
②	C T-type Steel	41*41*1.2*200	2
③	C T-type Steel	41*41*1.2*500	2
④	Universal Joint		4
⑤	C T-type Steel	41*21*1.2*1000	2
⑥	C T-type Steel	41*21*1.2*1450	4
⑦	C T-type Steel		2
⑧	Connecting Bolt	M8*35+M8*6	4
⑨	Edge Pressure	M8*6+M8*35	4
⑩	Middle Pressure	M8*6+M8*35	6
⑪	Inscribed Bolt	M8*20+M8*6	8
⑫	Long Bolts	M10*65+M10	12
⑬	Short Bolts	M10*25+M10	8
⑭	End Cap		8
⑮	Expansion Screw	M10*80	8

III. Installation

A. As FIGURE-A shows, assemble ①②③④ and ⑫ ⑬ to be two kinds of bracket part A and B.

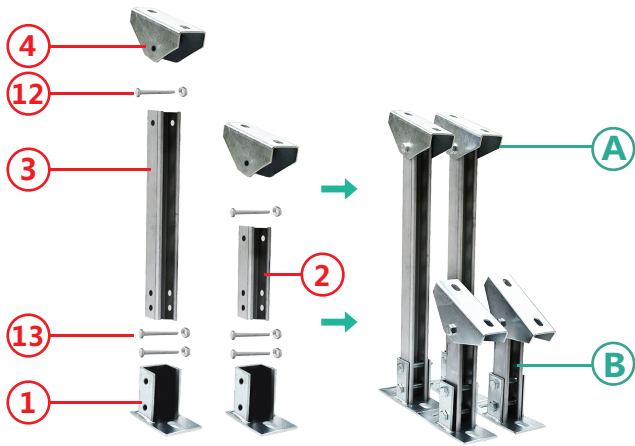


FIGURE-A

B. As FIGURE-B shows, add ⑤ and ⑫ on part A and B to form part C.

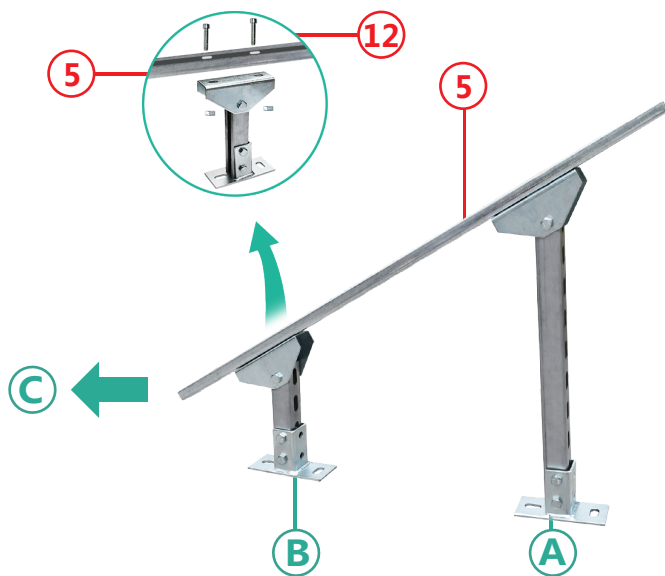


FIGURE-B

C. As FIGURE-C shows, use one ⑦ and four ⑪ to connect two ⑥, to form a part D.

D. As FIGURE-C shows, use ⑧ to fix part D on part C.

E. As FIGURE-C shows, press ⑭ into the end of frame.

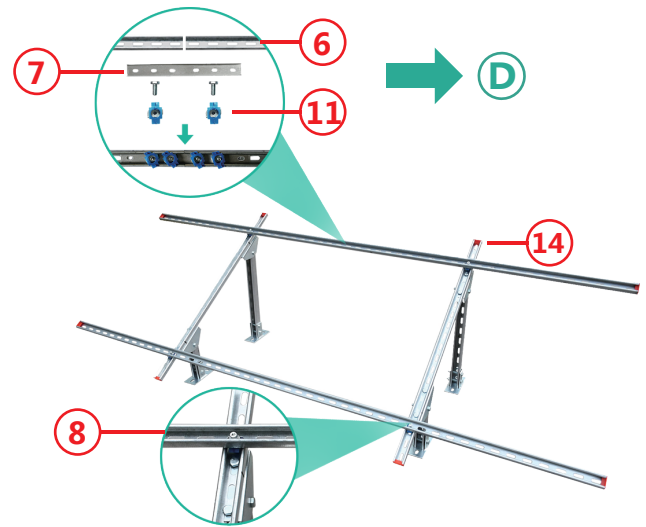


FIGURE-C

F. As FIGURE-D shows, fix the bracket on the ground with ⑮.

G. As FIGURE-D shows, fix solar panels on frame with ⑨ and ⑩

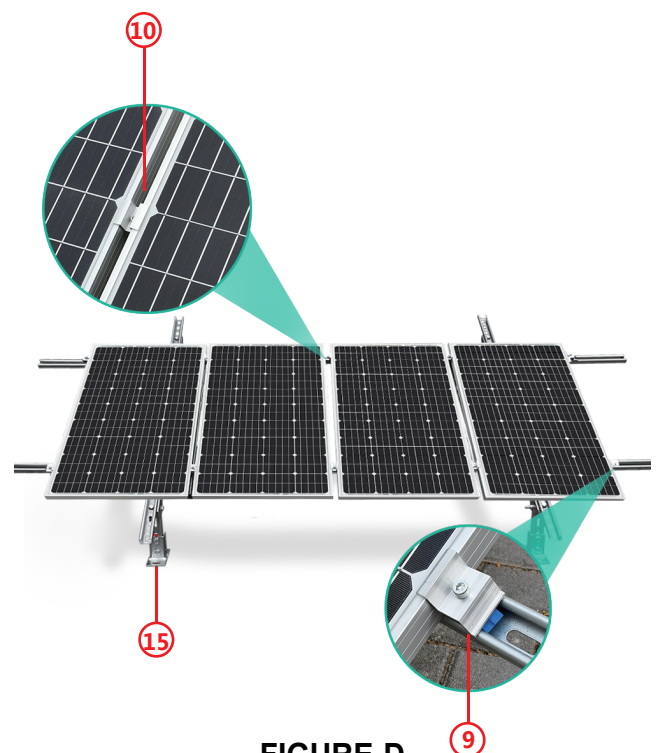


FIGURE-D