

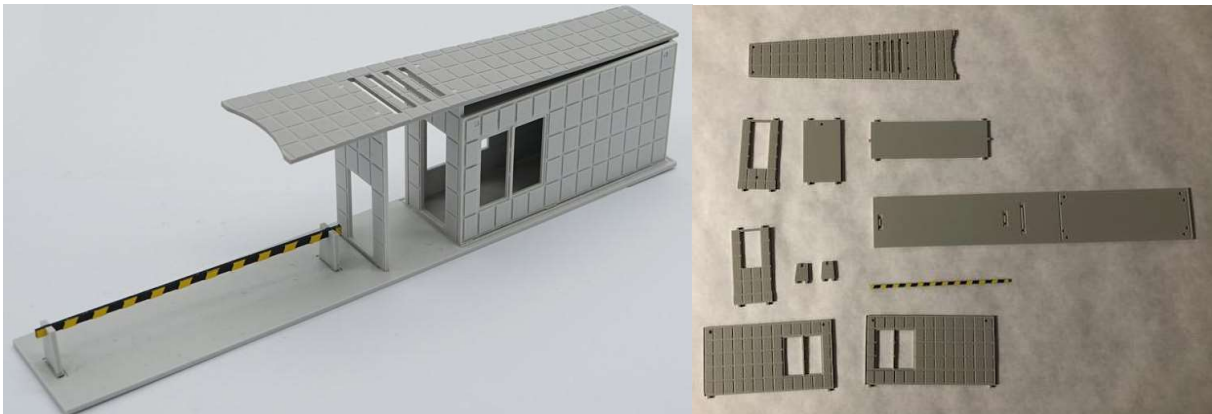
OUTLAND MODELS

Assembly instructions for:

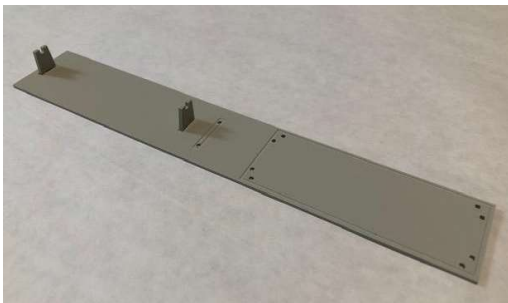
Outland Models Railway Scenery Layout Entrance Booth Ho Scale

11 pieces

Note: you will need to apply medium pressure to get each piece to snap into place but do not press to hard or you risk breaking the panels.



1. Start by snapping the supports for the stop bar into the base.



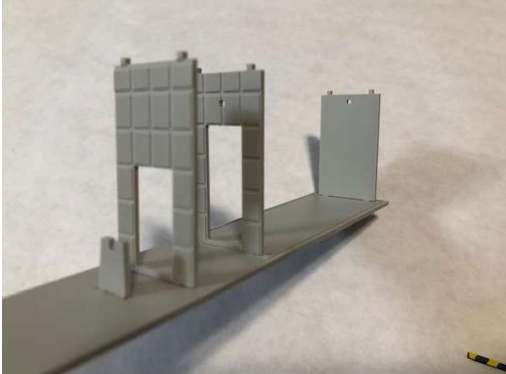
2. Next select the wall with the smallest opening. With the grid design facing out and the opening at the bottom snap into base holes closest to the stop bar supports.



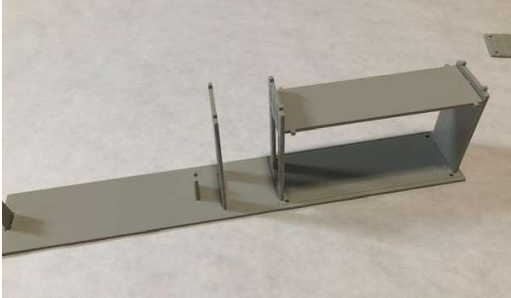
OUTLAND MODELS

3. Now select the wall with the larger opening, again with the grid lines facing outward, snap into base holes directly beside the wall you just installed.

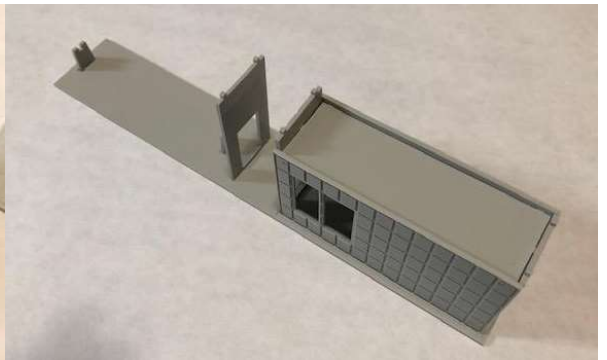
3b. Place the small wall with no windows with the small hole at the top into the far side base holes.



4. Next insert the small plain roof into the center holes of the two far walls.



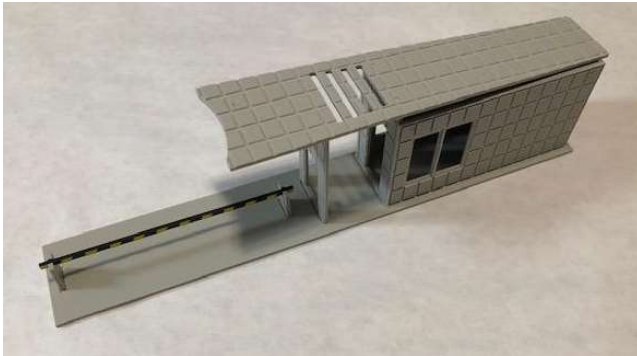
5. Now insert one of the larger walls into the base, then into the roof, then repeat for the opposite side.



OUTLAND MODELS

6. Please note for the larger roof panel, the crescent shape faces the closest to the stop bar. To install the large roof piece start with the wall farthest from the stop bar, work your way across securing each wall to the roof one at a time. Note: you will need to apply medium pressure to get each piece to snap into place but do not press to hard or you risk breaking the panels.

6a. Lastly place the stop bar on the supports.



7. Congratulations, your new model is complete! Please remember to check out all of our latest products on our website outlandmodels.com

We sincerely thank you for your business and we hope this model is a great addition to your collection. As always we hope to assist you in the future with any other model needs you may have.