

OUTLAND MODELS

Assembly instructions for:

City Damaged Abandoned Office Building N Scale Outland Models Railway Scenery

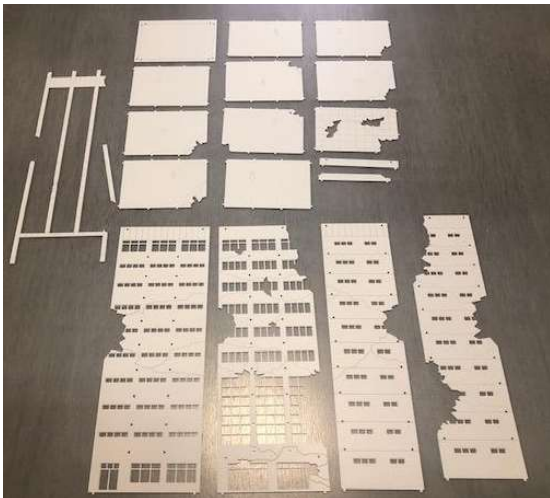
19 pieces

Note: you will need to apply medium pressure to get each piece to snap into place but do not press to hard or you risk breaking the panels.

****THIS MODEL REQUIRES GLUE** Please note the use of plastic model cement will yield the best results. Super glue will discolor the plastic and thin cement will not provide a strong enough bond.**



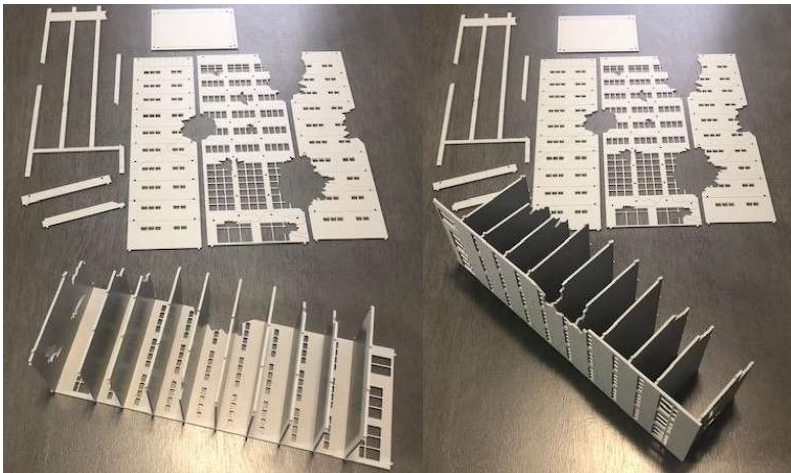
- 1. With this model it is imperative to lay out all pieces prior to assembly and pay close attention to the numbers on each floor. Please note the ground floor and roof are not numbered. The ground floor shows no damage, and the roof has two holes in it. The remaining floors start at two and increase to ten starting at the bottom, moving up toward the roof just like a real building.**



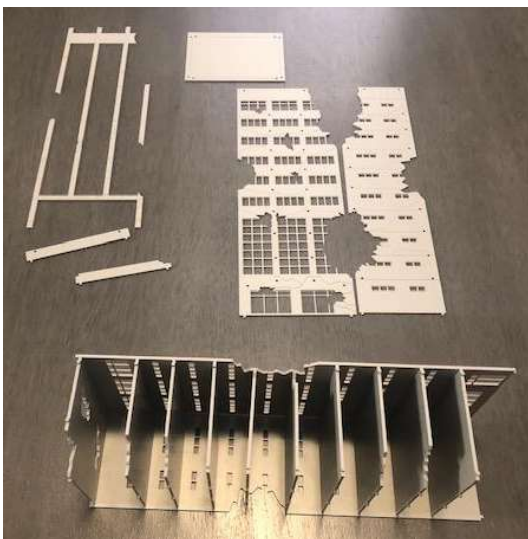
OUTLAND MODELS

- 2. Begin with the wider wall with the least amount of damage. For wall assembly please ensure the detailing is facing outward. Starting with floor number two with the #2 facing up insert the snap tabs into the first row of holes from the bottom of the wall.**

2b. Continue up the structure repeating the process for floors three through ten and the roof. Again ensure with each floor that the #'s on the floors are face up.

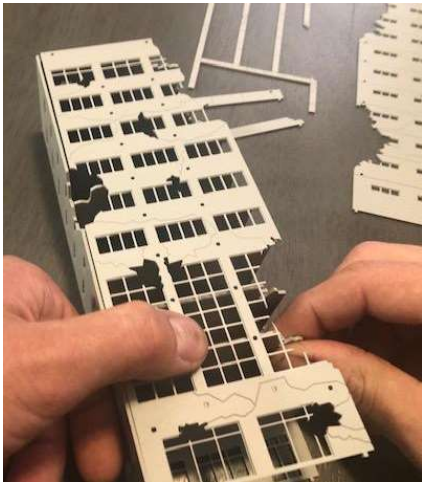


- 3. Prior to snapping in any individual piece, be sure that the damage on the floors coincides with that of the walls so everything lines up properly.**
- 4. Now take the thinner wall with the least amount of damage and create your first corner by aligning and then snapping the floors into the second wall panel one at a time.**

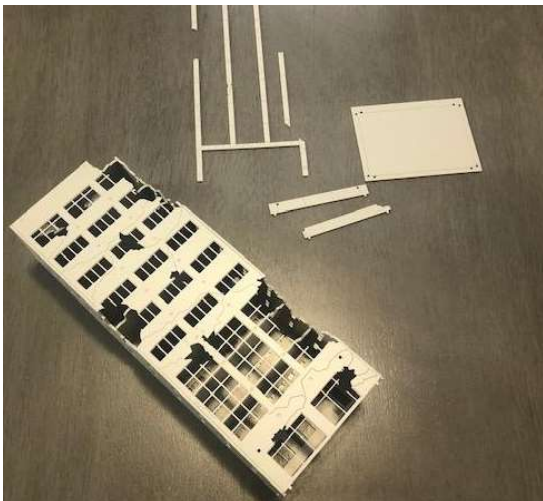


OUTLAND MODELS

- 5. Now place the last of the two wider walls on the front of the building. Gently snap into place starting at the bottom and working your way to the top one floor at a time. Be sure to hold each individual floor for stability as you press on the face of the wall.**

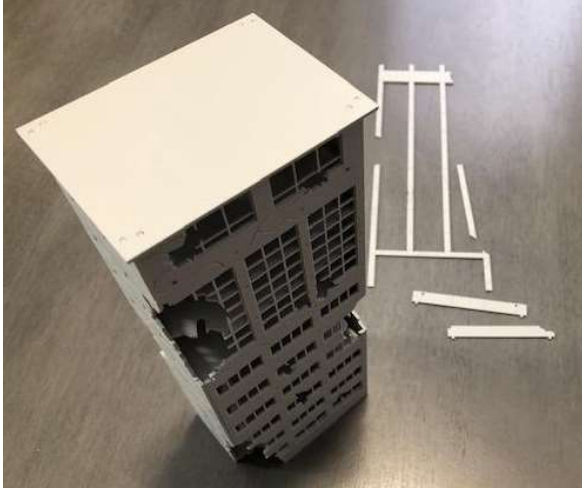


- 6. Now place the last of the two thinner walls on the side of the structure and press into place, again one floor at a time.**



OUTLAND MODELS

- 7. To install the floor, set the structure on its roof. Ensure the detailing on the floor is facing toward the roof. Gently press floor into place.**

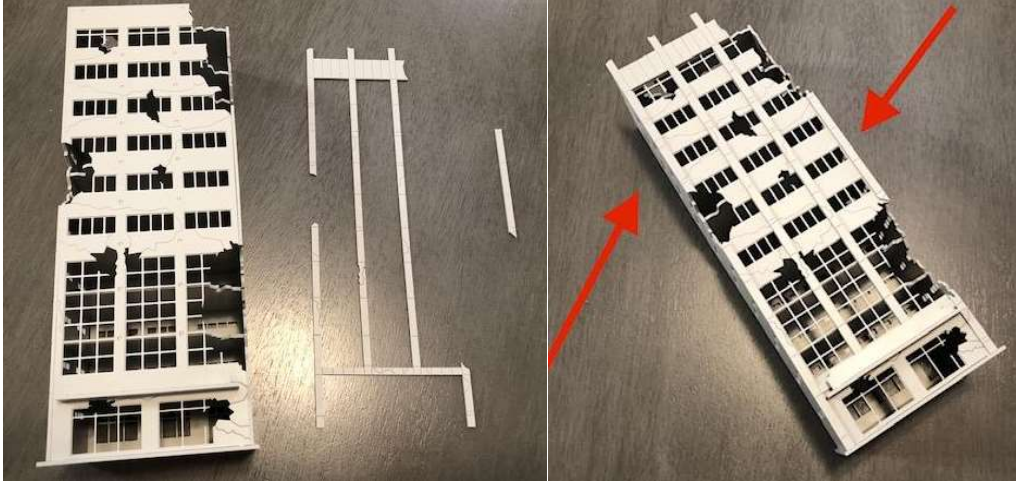


- 8. Assemble the front fascia by clicking the two trim pieces together, then snap onto the building in the two remaining holes on the front just above the first floor.**



OUTLAND MODELS

- 9. If you desire, you may now glue the last two remaining trim pieces to the front of the building. Again line up the damage so everything matches up correctly.**



- 10. Congratulations, your new model is complete! Please remember to check out all of our latest products on our website outlandmodels.com**

We sincerely thank you for your business and we hope this model is a great addition to your collection. As always we hope to assist you in the future with any other model needs you may have.