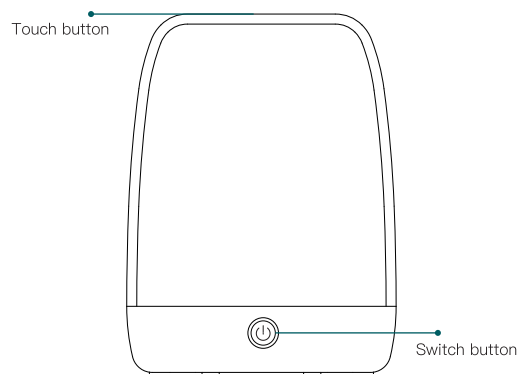


# THE GLOW LIGHT

MULTICOLOR AND WHITE SMART LAMP

### BUTTON DESCRIPTION



#### Touch button:

- Click the button to switch the following colors in turn, warm white (2700K), red, green, blue, purple, and OFF.
- Long press the button to adjust the brightness of the current color, will cycle from 1% to 100% and then to 1%. Stay for a while at 1% or 100% brightness.

#### Switch button:

- Click the button to turn the night light on or off. Long press the button for 5S to initialize the device, and it will enter the network configuration status again.

### 1. ADD DEVICES

#### 1. Download the TreatLife APP



- Please scan the QR code or search "TreatLife" on the Apple APP Store / Google Play to download the APP.

#### 2. Registration or Log In

- Tap "Register" to create an account. Enter your email address to get a verification code and create a password. Or, choose "Log in" if you already have a TreatLife account.

#### 3. Configure the APP to the night light

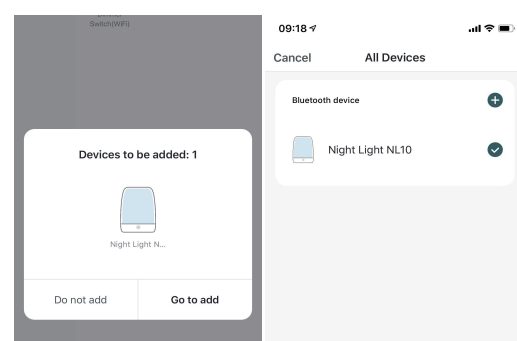
- Preparation: Ensure the night light is connected to power; Ensure your phone is connected to your WiFi router and is able to connect to the internet.

#### NOTE:

- This night light only supports 2.4GHz networks. If you connected to a 5GHz network before, please switch to the 2.4GHz network.

### 2. BLUETOOTH MODE (AUTOMATIC MODE)

- First, turn on the phone's Bluetooth.
- Plug in the device and ensure it is receiving power.
- Press and hold the mechanical on/off button for 5 seconds until the night light blinks mechanically.
- Open the "TreatLife" APP and it will find the Treatlife night light automatically.
- If the night light is not automatically discovered, click the "+" at the top right list and select Auto Scan to automatically search for the night light.
- Follow the steps in the APP to complete the pairing.

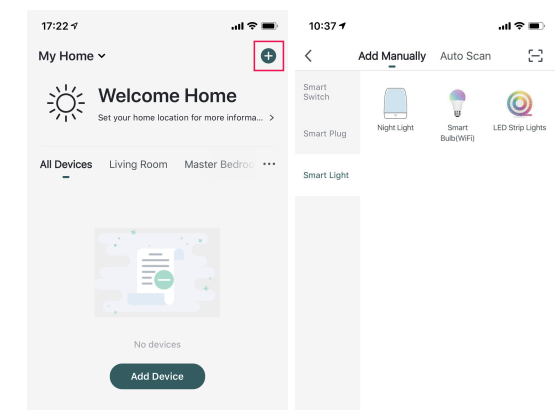


#### NOTE:

- Please complete the pairing process within 3 minutes after night light is reset.
- Please use one of the following pairing methods if the automatic mode above did not work.

### 3. EZ MODE (MANUAL MODE)

- Click the "+" symbol on the upper right corner of the device list, and select "Night Light" in "SmartLight" options.
- Press and hold the mechanical on/off button for 5 seconds until the night light blinks rapidly.
- Tap "Confirm indicator rapidly blink"; Enter your Wi-Fi Password; Wait for the light to complete the connection.

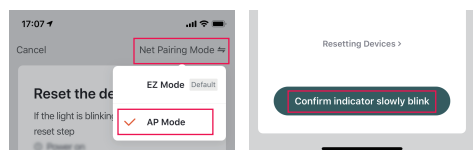


#### THANK YOU

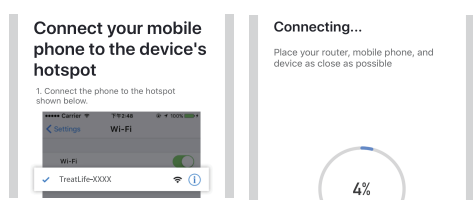
If you have any questions, please feel free to contact us first. We are always here for you.

### 4. AP MODE

- If you can not configure the night light successfully with the default mode, please try to connect with AP Mode.
- Tap "AP Mode" on the top right corner.
- Press and hold the mechanical on / off button for 5 seconds, until the night light blinks rapidly. Then press and hold for 5 seconds again until the night light blinks slowly.
- Tap "Confirm indicator slowly blink".



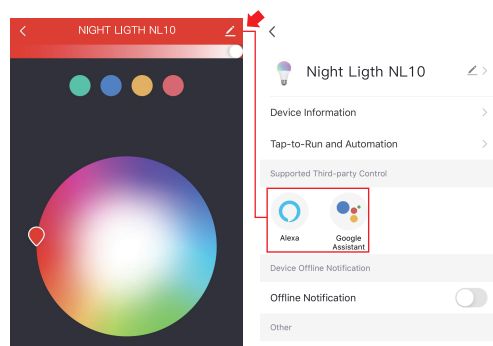
- Enter your Wi-Fi Password.
- Open WLAN settings; the Wi-Fi settings on your phone and connect to the "TreatLife-xxx" network.
- Go back to the APP and continue to add the device then wait for the connection to complete.



### Link TreatLife to Alexa/Google Assistant

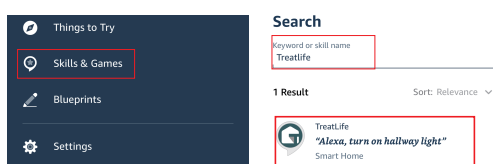
Go to TreatLife->More for instructions to link Alexa/Google Assistant.

Note: Please log in with your TreatLife account.



#### Key Steps to Link the Alexa Skill

- Sign in With Amazon, tap on "Skills & Games" in the Alexa menu;
- Search for the "TreatLife", and tap "Enable" to enable the Skill.
- Enter the "TreatLife" APP Account and Password, then tap "Link Now" to enable the Skill.



### 5. APP SETTINGS

#### Dimmable Cool & Warm:

- With standard white color, you can smoothly adjust it from warm white to cool white from 2700k to 6500k, just adjust the brightness as needed.

#### 16 Million Colors:

- Create your favorite light effects with 16 million colors, to live in a colorful life.

#### Scene Setting:

- Create or choose a scene (Night, Read, Working, Leisure, Soft, Colorful, Dazzling, Gorgeous) to match your style and fit your mood.

#### Schedule:

- Create the timer or countdown to automatically turn on/off the light based on daily routines or to simulate occupancy while you are on vacation to trick potential intruders.

NOTE: Time variance is ±30s.

#### SPECIFICATIONS

|                             |  |
|-----------------------------|--|
| Input Power                 | 5V/1A                                      |
| Wattage                     | 2W   |
| Operating Temperature       | -20°C-40°C(-4°F-104°F)                     |
| Luminous                    | <200lm                                     |
| Wireless Frequency          | 2.4GHz                                     |
| Wireless Standard           | IEEE802.11 b/g/n                           |
| Supported Operating Systems | Android 4.1 and above or iOS 8.0 and above |

### TROUBLESHOOTING

#### Can't connect to the APP.

- Make sure the light is blinking when you are attempting to connect to APP.
- Default Mode Paring: is fast blinking (0.5s/time).
- AP Mode Paring: is slowly blinking (2s/time).
- Finish the pairing within 3 minutes when the light starts blinking. (Refer to "Me-FAQ&Feedback" in the APP)
- Move the light closer to your wireless router to ensure there is a strong Wi-Fi signal.
- If your router is 2.4GHz & 5GHz dual-band, the 2.4GHz band may not be turned on. Please configure the router settings to turn on the 2.4GHz band.
- Make sure you entered the correct Wi-Fi password.

#### Can't Connect to the Alexa/Google Assistant.

- Check whether the Alexa/Google Assistant APP is correctly configured with the TreatLife APP account.
- Check whether the device name is duplicated.
- Please refer to the manual instruction or "Me-FAQ&Feedback-All-Third-party control issues" in the APP to reconnect to the Alexa/Google Assistant.

#### The Night Light Stops Working Suddenly

- Try moving the light to a different place that is closer to your wireless router.
- If the light still doesn't work, please contact our support team.

### FCC CAUTION:

This device complies with part 15 of the FCC Rules.

Operation is subject to the following two conditions: (1) This device may not cause harmful interference, and (2) including interference that may cause undesired operation. Any Changes or modifications not expressly approved by the party responsible for compliance could void the user's authority to operate the equipment.

Note: This equipment has been tested and found to comply with the limits for a Class B digital device, pursuant to part 15 of the FCC Rules. These limits are designed to provide reasonable protection against harmful interference in a residential installation. This equipment generates uses and can radiate radio frequency energy and, if not installed and used in accordance with the instructions, may cause harmful interference to radio communications. However, there is no guarantee that interference will not occur in a particular installation. If this equipment does cause harmful interference to radio or television reception, which can be determined by turning the equipment off and on, the user is encouraged to try to correct the interference by one or more of the following measures:

- Reorient or relocate the receiving antenna.
- Increase the separation between the equipment and receiver.
- Connect the equipment into an outlet on a circuit different from that to which the receiver is connected.
- Consult the dealer or an experienced radio/TV technician for help.

This equipment complies with FCC radiation exposure limits set forth for an uncontrolled environment. This equipment should be installed and operated with minimum distance 20cm between the radiator & your body.

### ISED/C WARNING:

This device complies with Innovation, Science, and Economic Development Canada's licence-exempt RSS standard(s). Operation is subject to the following two conditions:

- (1) this device may not cause interference, and
- (2) this device must accept any interference, including interference that may cause undesired operation of the device.

Le présent appareil est conforme aux CNR d'Innovation, Sciences et Développement économique Canada applicables aux appareils radio exempts de licence.

L'exploitation est autorisée aux deux conditions suivantes :

- (1) l'appareil ne doit pas produire de brouillage, et
- (2) l'utilisateur de l'appareil doit accepter tout brouillage radioélectrique subi, même si le brouillage est susceptible d'en compromettre le fonctionnement.

The device is compliance with RF exposure guidelines, users can obtain Canadian information on RF exposure and compliance. The minimum distance from body to use the device is 20cm.

Le présent appareil est conforme Après examen de ce matériel aux conformités ou aux limites d'intensité de champ RF, les utilisateurs peuvent sur l'exposition aux radiofréquences et la conformité and compliance d'acquiescer les informations correspondantes. La distance minimale du corps à utiliser le dispositif est de 20cm.

|       |                      |       |                    |
|-------|----------------------|-------|--------------------|
| 版本:   | 1.0版                 | 颜色:   |                    |
| 物料编码: |                      | 工艺:   | 双面印刷, 四色一专, 过哑油, 啤 |
| 产品名称: | NL10小夜灯说明书           | 平面设计: | 徐梦辉                |
| 展开尺寸: | 480*110mm (风琴折 5折6页) | 日期:   | 2020.12.07         |
| 材质:   | 105g哑粉纸              | 备注:   |                    |

